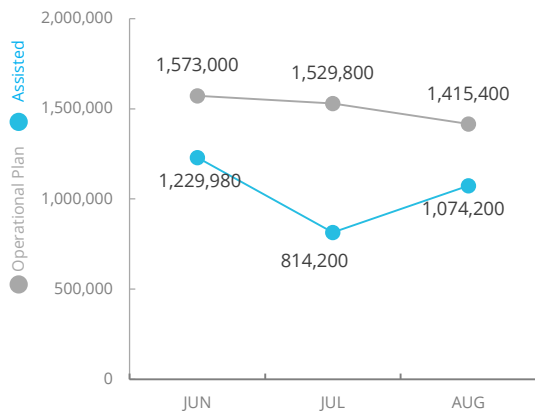


Democratic Republic of Congo

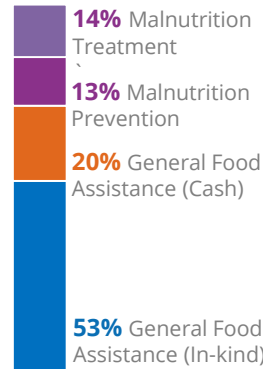
PEOPLE ASSISTED

DR Congo Interim Country Strategic Plan

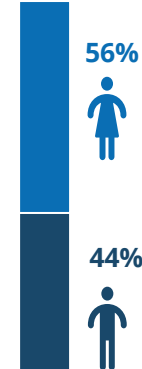


OPERATIONAL PROFILE

By Activity



By Gender

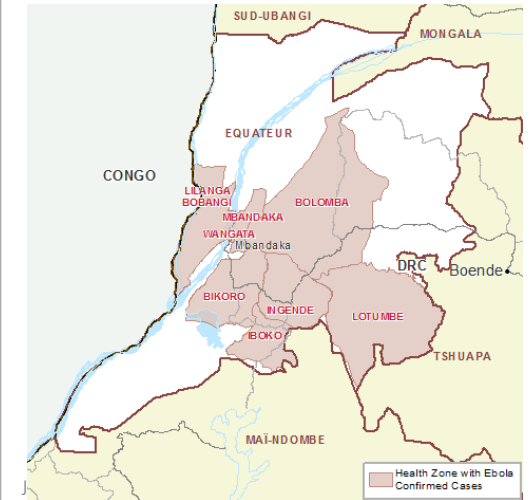


COVID-19 OPERATIONAL IMPACT

Status WFP Response adjusted

- Extended distribution timelines
 - Crowd control and social distancing measures at distribution sites
 - Mandatory hygiene measures at distribution sites
 - School feeding through take home rations
- Legend: ✔ Ongoing ! Partially Suspended ✘ Suspended

EBOLA OUTBREAK IN EQUATEUR PROVINCE (As of 04 Oct)



CASES
Confirmed 119
Recovered 67
Deceased 53

FUNDING

DR Congo Interim Country Strategic Plan (ICSP)

October 2020 – March 2021

Net funding requirements

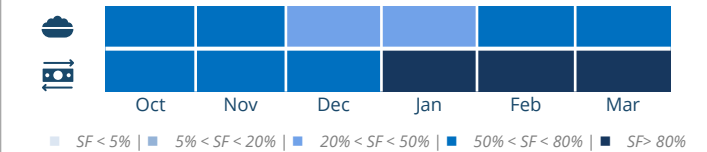
US\$145m

2020 LEVEL 3 RESPONSE
Requirements US\$ 575.7m

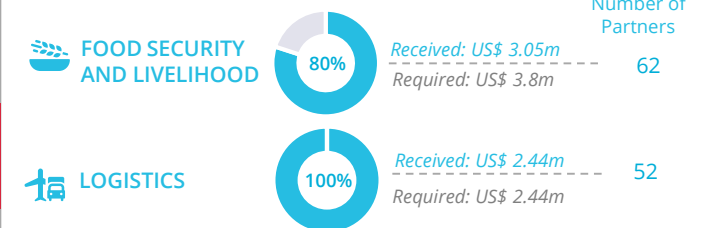
AVERAGE MONTHLY FUNDING REQUIREMENTS (US\$)

33.7m 17.9m

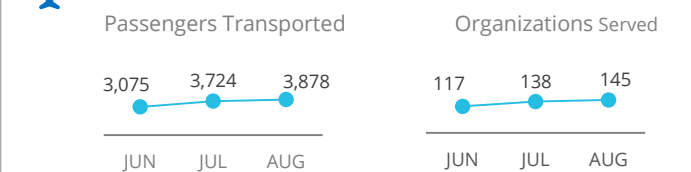
EXPECTED SHORTFALLS



WFP-LED AND SUPPORTED CLUSTERS

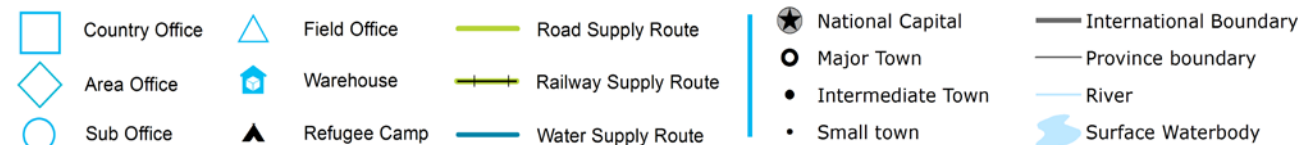
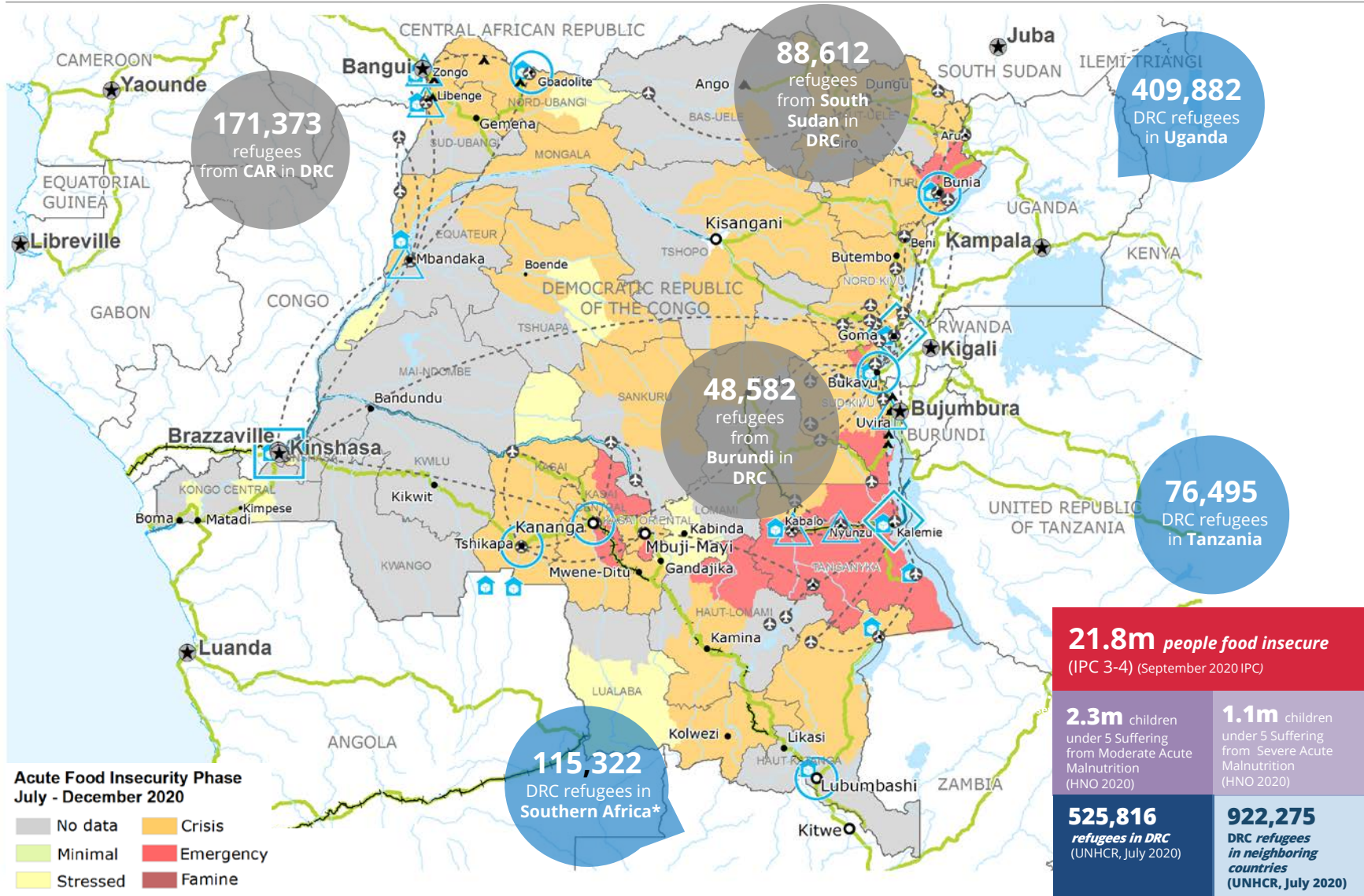


UN HUMANITARIAN AIR SERVICES (UNHAS)



WFP LEVEL 3 EMERGENCY

SITUATION REPORT and COUNTRY BRIEF



*Includes Botswana, Eswatini, Lesotho, Madagascar, Malawi, Namibia, South Africa and Zimbabwe.
Sources: WFP, UNGIWG, GAUL, GLCSC, OCHA, UNHCR, IPC.
The designations employed and the presentation of material in the map(s) do not imply the expression of any opinion on the part of WFP concerning the legal or constitutional status of any country, territory, city or sea, or concerning the delimitation of its frontiers or boundaries.
© World Food Programme 2020.

