



World Food Programme

WFP Cameroon

Situation Report

NW/SW response #02

January 10, 2019



In Numbers

4 provinces mainly affected (North West, South West, Littoral and West)

4 million people affected

1.3 million people in need of assistance

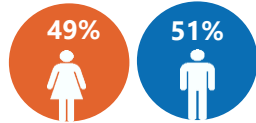
Highlights

• Distributions in Meme, South West region progressed through the month of December. A total of 40,471 beneficiaries were reached with a food basket composed of rice (350g), salt (5g), Supercereal (50g), pulse (100g) and vegetable oil (35g).

• WFP urgently needs USD 24 million to meet the basic food needs of IDPs affected by the crisis. This funding deficit is threatening operations in the first half of 2019 and a lack of funding is foreseen in February if no additional funding is received.

40,471 People assisted

December 2018



GENDER MARKER 2A

Situation Update

- Road blocks continue to limit movement of WFP operations in the North West and South West regions. In December 2018, 19 cases of road blocks were reported in the two regions. The longest last for three days (From 30 November to 2 December and from 24 to 26 December) on the Kumba-Buea route in the South West region, where traffic was paralyzed due to non-states armed groups (NSAGs) activities.
- The security situation in the North West and South West regions remains volatile and unpredictable. The level of security remains Security Level System 4 (SLS 4) for UN operations. 'Ghost town' activities continue to be observed on every Mondays and a lockdown was announced to start in February. However, WFP and other humanitarian actors on the field are working together to establish more secured evacuation processes.

WFP Response

- WFP provided a month ration of food assistance to 40,471 IDPs (20,012 women and 20,459 men) in Meme district, South West region in December 2018. Up to 61 percent of assisted IDPs are children and teenagers under 18.
- To ensure the smooth distribution and food movements in a tense environment, WFP carried out capacity strengthening trainings to the cooperating partners (CPs) to assist the response in the South West and North West regions. Training on gender, Prevention of Sexual Exploitation and Abuse (PSEA) and Gender Based Violence (GBV) were also provided and a code of conduct has been signed. Partners were sensitized on WFP priority on the most targeted beneficiaries which are women, elderly people and people with special needs. WFP is partnering with the local NGO Reach Out for distributions in the South West region.

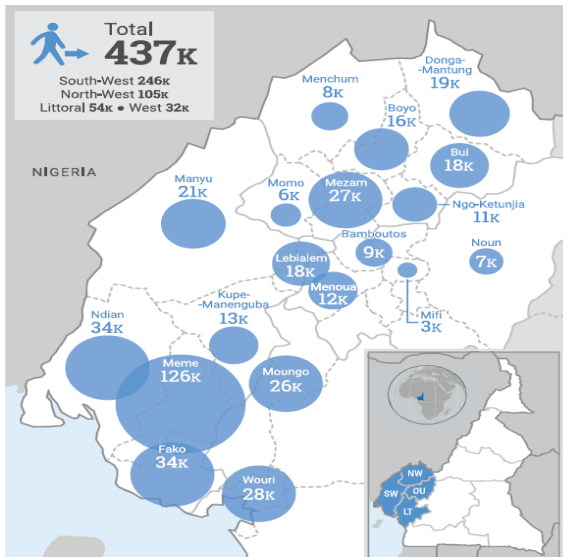
WFP Net Funding Requirements

(Feb. 2019 – Jun. 2019)

Under Strategic Outcome 1; Activity 1

[Populations affected by NW/SW crisis have safe access to adequate and nutritious food.]

USD 24 million



OCHA: IDPs affected by NW/SW crisis.

Photo: Food distribution to IDPs in Meme, South West region. WFP/Cooperating Partner Reach Out Cameroon

- WFP is stepping up efforts to advocate for more support from major donor countries to bridge the existing funding deficit. The Representative and Country Director of WFP Cameroon met with the American Ambassador, the Swiss Ambassador and the High Commissioner of the United Kingdom in Cameroon in December to brief them on WFP's ongoing response in the North West and South West regions.
- Data collection for the Rapid Emergency Food Security Assessment (EFSA) began in January in Buea on food security, nutrition and market analysis. Data is being collected and analysed in both regions. The mobile Vulnerability Analysis and Mapping (VAM) with support from WFP Regional Bureau in Dakar is completed in the West and Littoral regions, and ongoing in the North West and South West regions.



Food and Nutrition Assistance

- In December 2018, WFP provided food and nutrition assistance to 40,471 IDPs (20,012 women and 20,459 men) in the South West region. They received full 30-day ration. In total, 638.66 mt of food including rice, salt, Super Cereal, pulses and vegetable oil was distributed.



Supply Chain

- As of December 2018, 3,515 mt of various food products including rice, super cereals, oil and split peas was purchased for this operation. WFP dispatched 1,540 mt for distribution in the Littoral region, as well as in Mamfe and Kumba in the South West region.
- Split peas are not culturally accepted in the region. WFP is therefore exploring the possibility to procure beans locally or resort to other options to replace split peas.

Clusters and Common Services



Food Security Cluster

- NGOs in the South West and North West regions have been identified by the Cluster and the first Cluster meeting was held on 6 December in the South West and in the North West on 13 December. The Food Security Cluster Coordinator has been on board since 7 January 2019.



Logistics Cluster

- The Logistic Cluster which was activated in October is actively supporting partners through coordination and information management activities, including warehouse and road assessments, guidelines for the movement of cargo and mapping of access constraints. The recruitment of the Logistics Cluster Coordinator is ongoing.
- The Cluster also held two coordination meetings in Buea and Bamenda in December with wide participation from local NGOs. The participants expressed that most of the problems they face in moving cargo are related to security issues rather than logistics.

Challenges and Constraints

- Difficulty in organising and coordinating truck movements in the area due to security and operational constraints.
- Limited resources are received to strengthen operations of WFP field office in Buea to provide emergency food assistance to IDPs in dire needs. Food supply is very likely to break in February if no further contributions will be available.

Contacts

- Isabelleflore Wega, Communication Officer, isabelleflore.wega@wfp.org
- Yueyue Li, Partnership Officer, yueyue.li@wfp.org
- For further information, visit the Cameroon page on www.wfp.org/countries/cameroon or follow our stories on Facebook <https://web.facebook.com/wfp.westafrica>

WFP NW/SW Response

	Scale-up requirements between January 2019 and June 2020 (in USD)	Total allocated contributions for scale-up in 2019 (in USD)	6 Months Net Funding Requirements (in USD)	Planned number of beneficiaries	Women	Men
General Food Distribution	48 million	2.34 million (4.7%)	24 million	400 000	208,000	192 000