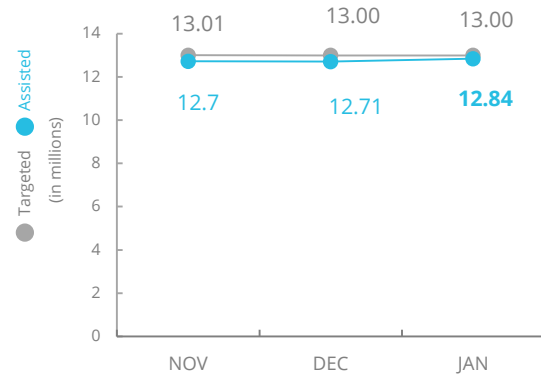


Yemen



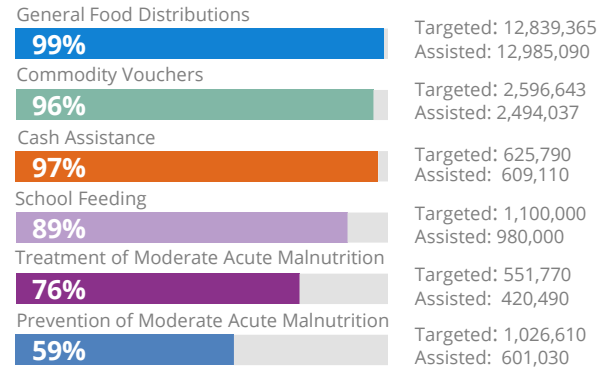
PEOPLE ASSISTED Yemen Interim Country Strategic Plan (ICSP)



SOURCE: WFP, 03 MAR 2020



OPERATIONAL PROFILE By Activity (January)



FUNDING Yemen Interim Country Strategic Plan (ICSP)

March - August 2020

US\$848m

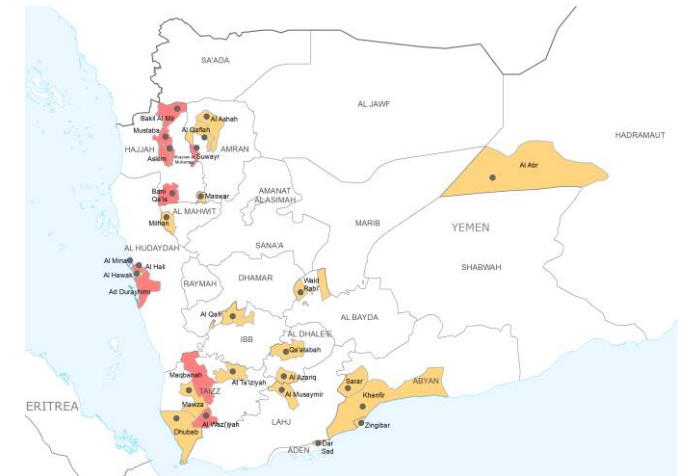
Net funding requirements

2020 LEVEL 3 RESPONSE
Requirements: US\$2.5 bn
Funded: US\$0.69 bn

27%

SOURCE: WFP, 02 MAR 2020

ACUTE FOOD SECURITY SITUATION IN 29 DISTRICTS JULY - SEPTEMBER 2019



SOURCE: IPC, 30 JUL 2019

AVERAGE MONTHLY FUNDING REQUIREMENTS

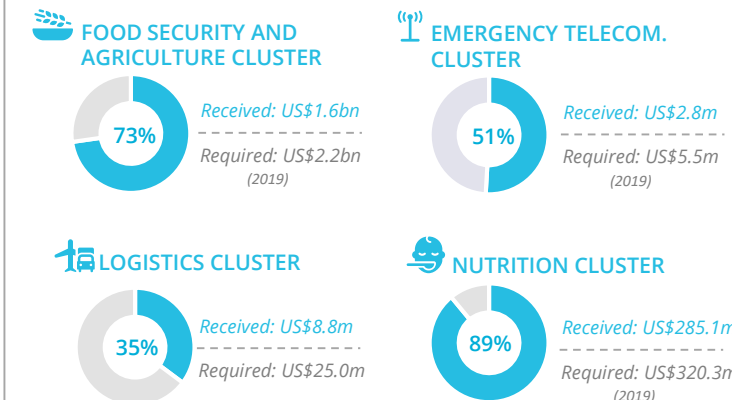
Food: US\$113.1m Cash: US\$94.1m

EXPECTED SHORTFALLS



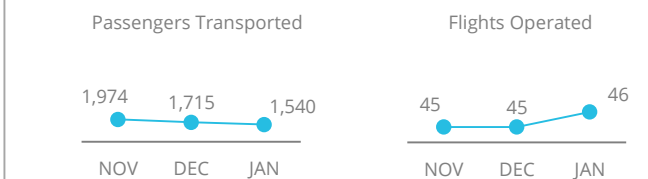
SOURCE: WFP, 26 FEB 2020

WFP-LED AND SUPPORTED CLUSTERS

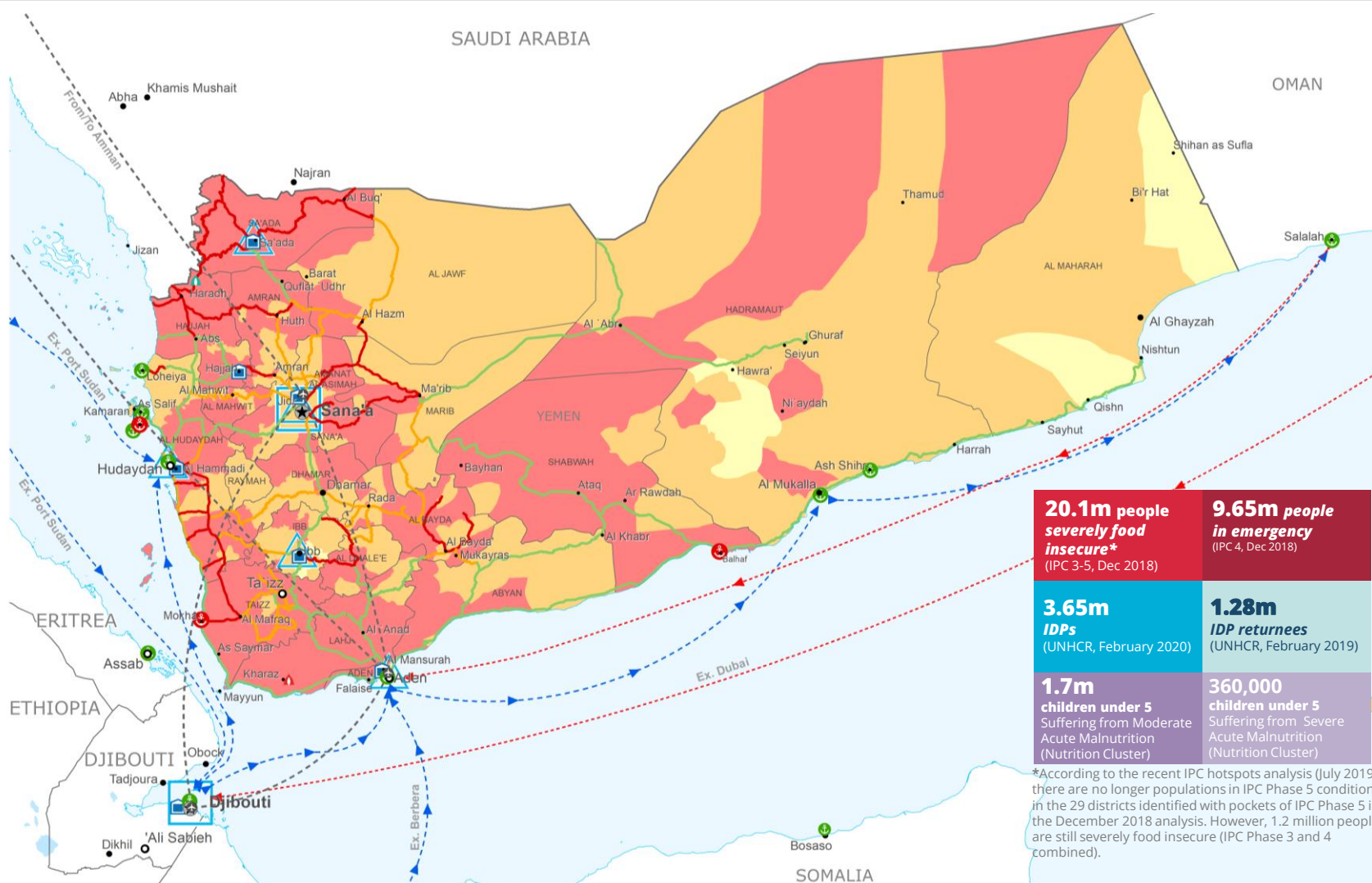


SOURCE: Clusters, 26 FEB 2020

UN HUMANITARIAN AIR SERVICES (UNHAS)



SOURCE: WFP, 26 FEB 2020



20.1m people severely food insecure* (IPC 3-5, Dec 2018)

9.65m people in emergency (IPC 4, Dec 2018)

3.65m IDPs (UNHCR, February 2020)

1.28m IDP returnees (UNHCR, February 2019)

1.7m children under 5 Suffering from Moderate Acute Malnutrition (Nutrition Cluster)

360,000 children under 5 Suffering from Severe Acute Malnutrition (Nutrition Cluster)

*According to the recent IPC hotspots analysis (July 2019), there are no longer populations in IPC Phase 5 conditions in the 29 districts identified with pockets of IPC Phase 5 in the December 2018 analysis. However, 1.2 million people are still severely food insecure (IPC Phase 3 and 4 combined).

IPC Classification (Dec 2018 - Jan 2019)

- No data
- Minimal (Phase1)
- Stressed (Phase2)
- Crisis (Phase3)
- Emergency (Phase 4)
- Famine (Phase5)
- Country Office
- Field Office
- Warehouse
- Port Closed
- Port Operational
- Port with Restricted Access
- UNHAS Connection
- UNHAS Route
- Supply Route Open
- Supply Route Closed
- Road Open
- Road with Restricted Access
- Road Closed
- IDP Camp
- Refugee Camp
- Refugee Center
- National Capital
- Major Town
- Intermediate Town
- Small Town
- International Boundary
- Governorate Boundary

Sources: WFP, UNGIWI, GAUL, GLCSC, OCHA, UNHCR.

The designations employed and the presentation of material in the map(s) do not imply the expression of any opinion on the part of WFP concerning the legal or constitutional status of any country, territory, city or sea, or concerning the delimitation of its frontiers or boundaries. © World Food Programme 2020.

WFP LEVEL 3 EMERGENCY SINCE 03 JULY 2015

SITUATION REPORT and COUNTRY BRIE

YEMEN Interim Country Strategic Plan