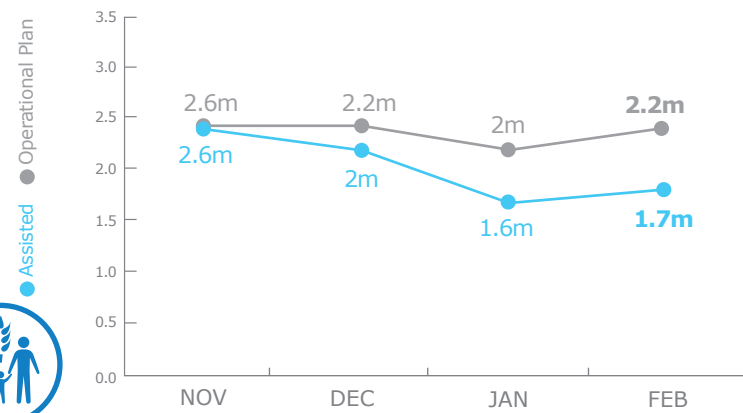


## PEOPLE ASSISTED

### Emergency Operation 200859 and Protracted Relief & Recovery Operation 200572



As of 01 January 2018, WFP activities in South Sudan are implemented under a dual structure with the Interim Country Strategic Plan (ICSP), PRRO and EMOP.

Source: WFP, 25 March 2018

## OPERATIONAL PROFILE

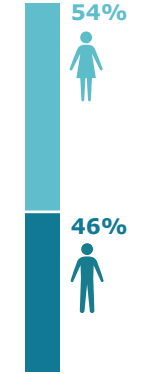
### BY ACTIVITY



FEB Assisted

Percentages of activities may include overlaps, i.e. beneficiaries that have been assisted with two or more different activities.

### BY GENDER



FEB Assisted

Source: WFP, 25 March 2018

## FUNDING

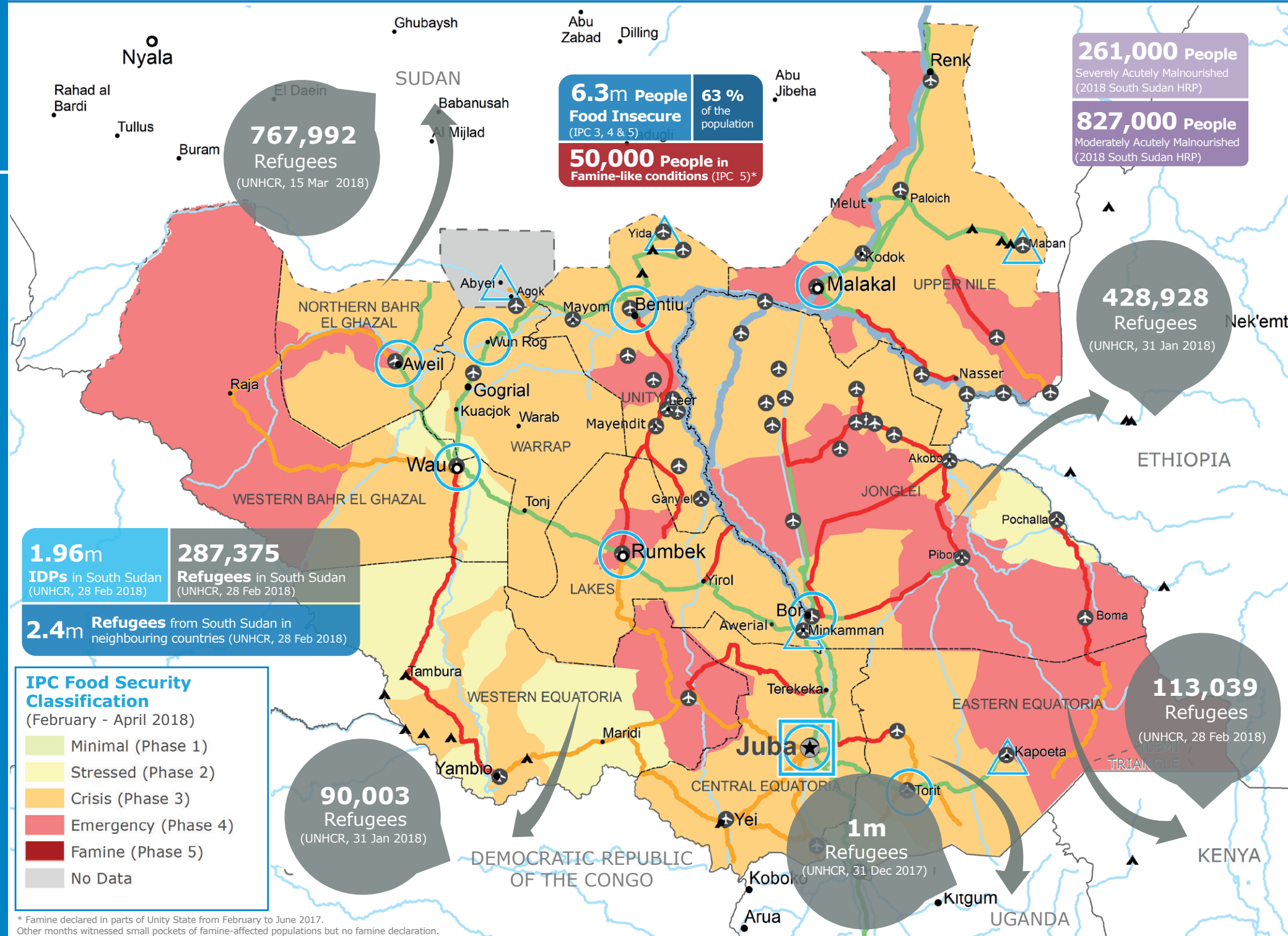
### Interim Country Strategic Plan (ICSP)



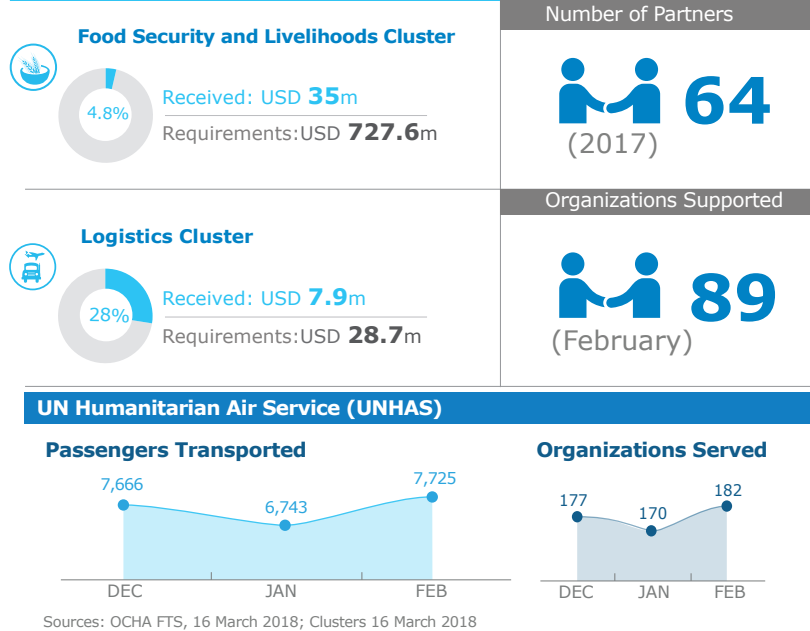
**April - September 2018**  
**USD 313.8m**  
 Net Funding Requirements

As of 01 January 2018, WFP activities in South Sudan are implemented under a dual structure with the Interim Country Strategic Plan (ICSP), PRRO and EMOP.

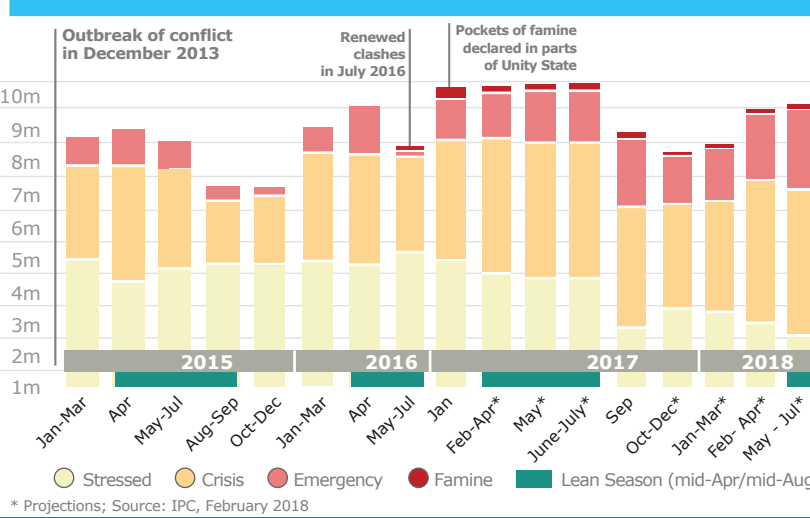
Source: RMBP, 29 March 2018



## WFP-LED & CO-LED CLUSTERS



## HISTORICAL FOOD INSECURITY (IPC)



## WFP LEVEL 3 EMERGENCY SINCE 23 DECEMBER 2013

For more information, see the **SITUATION REPORT** and **COUNTRY BRIEF** [www.wfp.org/countries/south-sudan](http://www.wfp.org/countries/south-sudan)

**2A EMOP 200859**  
[documents.wfp.org/stellent/groups/public/documents/ep/WFP284303.pdf](http://documents.wfp.org/stellent/groups/public/documents/ep/WFP284303.pdf)

Produced by the WFP **Operations Centre (OPSCEN)** jointly with Country Office and Regional Bureau Nairobi  
 This dashboard is based on best available information at the time of production. Future updates may vary as new information becomes available.



- Country Office
- Sub Office
- Field Office
- Road Open
- Closed Road
- Road with Limited Access
- Refugee / IDP Camp
- UNHAS Connection
- National Capital
- Major Town
- Intermediate Town
- Small Town
- International Boundary
- Undetermined Boundary
- Abyei Region
- State Boundary

Sources: WFP, UNGIWG, GAUL, GLCSC, OCHA, UNHCR, IPC

The designations employed and the presentation of material in the map(s) do not imply the expression of any opinion on the part of WFP concerning the legal or constitutional status of any country, territory, city or sea, or concerning the delimitation of its frontiers or boundaries.  
 © World Food Programme 2018