

Project Number: 200969 | Project Category: **Single Country IR-EMOP**
Project Approval Date: April 15, 2016 | Planned Start Date: May 01, 2016
Actual Start Date: April 15, 2016 | Project End Date: June 30, 2016
Financial Closure Date: December 31, 2016

Contact Info

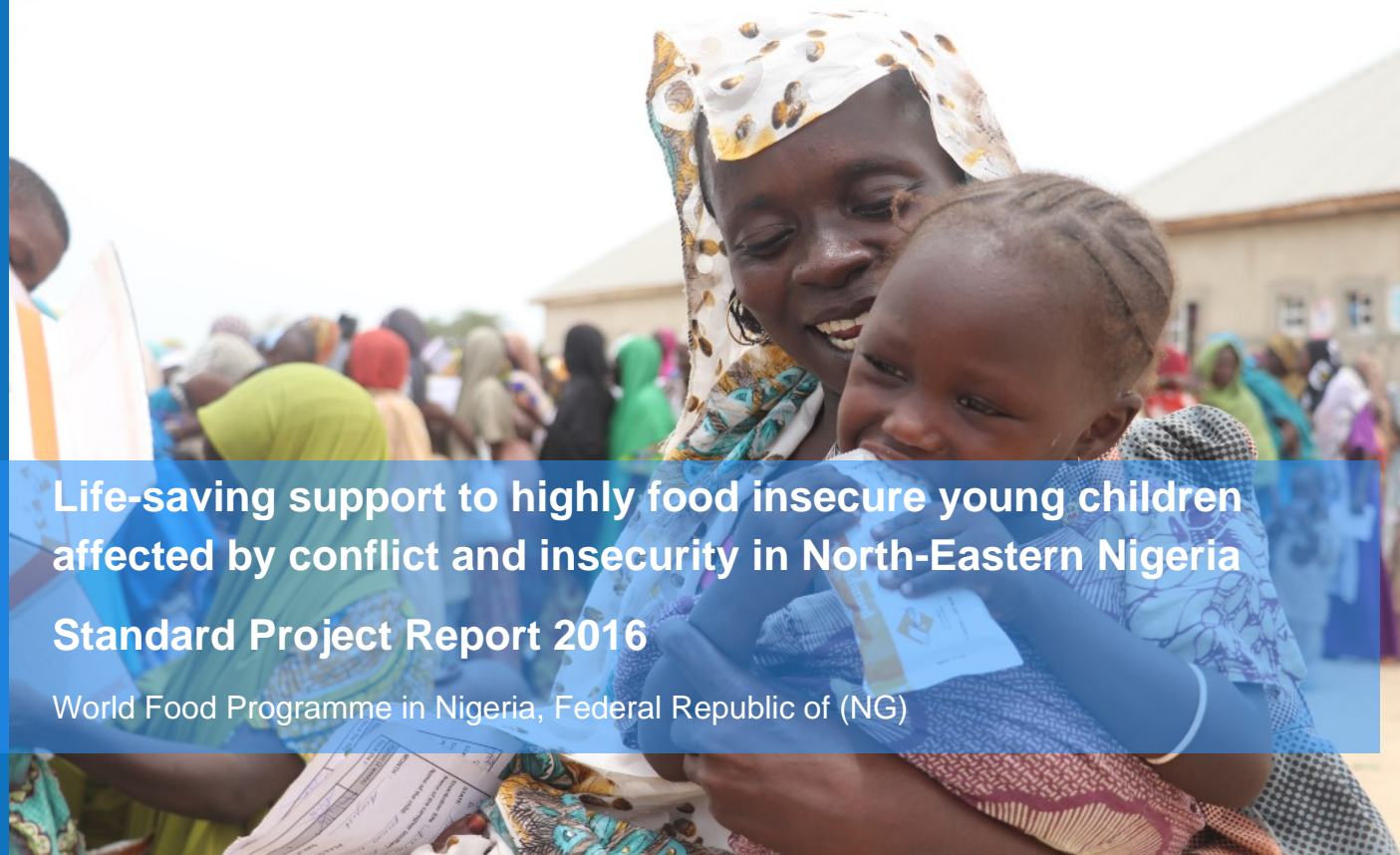
Haymanot Assefa, Head of Programme
haymanot.asefa@wfp.org

Country Director

Margot Van Der Velden (CD, a.i.)

Further Information

<http://www.wfp.org/countries>
SPR Reading Guidance



**Life-saving support to highly food insecure young children
affected by conflict and insecurity in North-Eastern Nigeria**
Standard Project Report 2016

World Food Programme in Nigeria, Federal Republic of (NG)



World Food Programme

Table Of Contents

Country Context and WFP Objectives

Country Context

Response of the Government and Strategic Coordination

Summary of WFP Operational Objectives

Country Resources and Results

Resources for Results

Achievements at Country Level

Supply Chain

Implementation of Evaluation Recommendations and Lessons Learned

Project Objectives and Results

Project Objectives

Project Activities

Operational Partnerships

Performance Monitoring

Results/Outcomes

Progress Towards Gender Equality

Protection and Accountability to Affected Populations

Story Worth Telling

Figures and Indicators

Data Notes

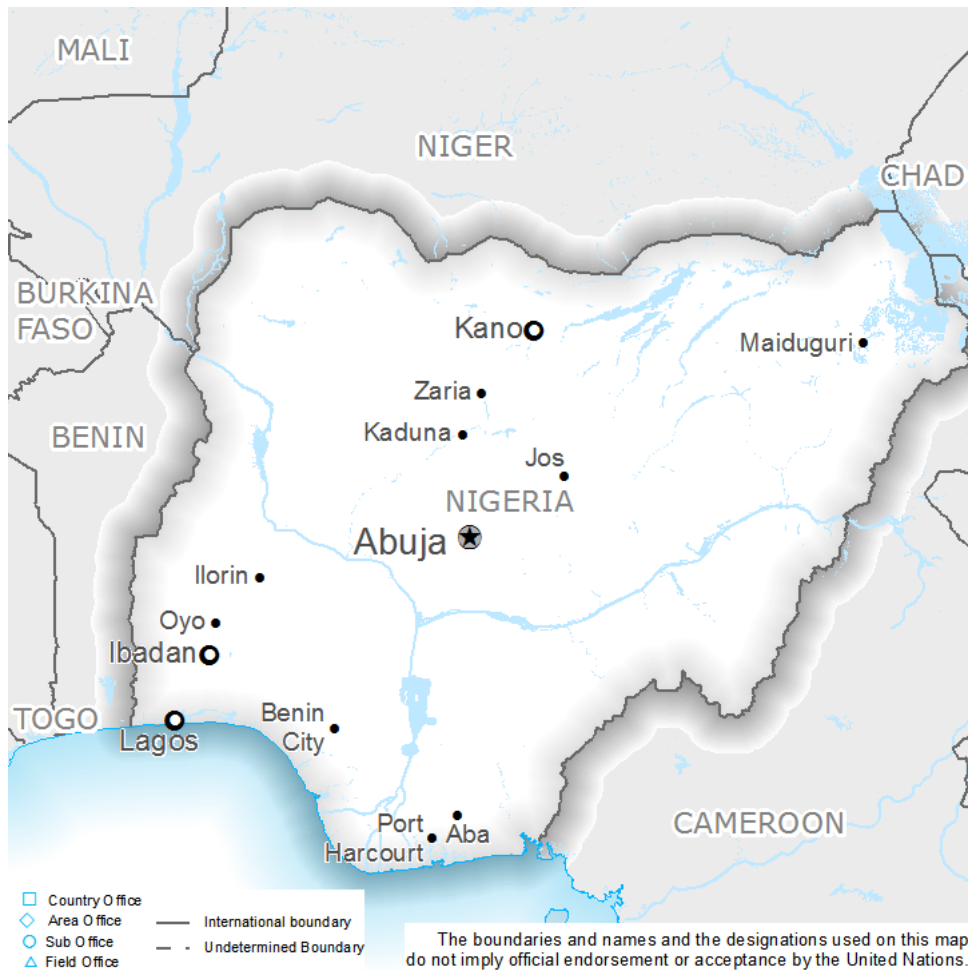
Overview of Project Beneficiary Information

Participants and Beneficiaries by Activity and Modality

Nutrition Beneficiaries

Resource Inputs from Donors

Country Context and WFP Objectives



Country Context

With a population of over 180 million, Nigeria is the most populous country in Africa and the seventh most populous country in the world. Some 68 percent of the Nigerian population is literate, and the rate for men (75.7 percent) is higher than that for women (60.6 percent).

As of 2015, Nigeria was the world's 20th largest economy and overtook South Africa to become Africa's largest economy in 2014. However, Nigeria has slipped into economic recession, with two consecutive quarters of declining economic growth. In August 2016, the Consumer Price Index measuring inflation increased by 17.6 percent (year-on-year), 0.5 percent points higher from the rate recorded in July (17.1 percent). The value of the Nigerian naira has depreciated by more than 30 percent between December 2015 and February 2016 primarily due to reductions in oil sector revenues in 2015 (FEWS NET, 2016).

According to the Lake Chad Basin Regional Market Assessment released in July, women play a marginal role in the trade of cereals around the Lake Chad Basin, especially in North Nigeria. Most women engaged in agricultural trade are small-scale retailers with no employees, whose main constraint is the lack of capital.

The Boko Haram-induced crisis remains the principle driving factor of instability in North East Nigeria with growing concerns as violence and sustained fighting against the insurgency continue to lead to population displacements. At end of October, there were 1.8 million internally displaced persons (IDPs) in North East Nigeria, of which 54 percent are women and 56 percent are children under the age of 18. The largest IDP populations are located in Borno, Adamawa and Yobe States corresponding to 93 percent of the total IDP population. In addition, according to the Nigeria 2016 Regional Refugee Response Plan, neighbouring countries, Cameroon, Chad and Niger are hosting

over 215,000 Nigerians that fled the country due to Boko Haram violence.

The Emergency Food Security Assessment (EFSA) conducted in May/June 2016 confirmed the results of the joint United Nations (UN) Assessment carried out in April 2016 on the dire food security and nutrition conditions of the IDPs and local communities in Maiduguri wards which had necessitated WFP to immediately commence its food assistance.

According to the October 2016 *Cadre Harmonisé* analysis on food security and nutrition which covered 16 states in North Nigeria, the epicentre of the crisis remained to be in Borno and Yobe States, where insecurity and lack of access to land are the key drivers for extremely poor cereal production. Around 4.6 million people (48 percent women) are estimated to be food-insecure in Borno, Yobe and Adamawa, with 55,000 in extreme food insecurity (Phase 5) and 1.8 million in an emergency situation (Phase 4), requiring immediate food assistance. According to the *Cadre Harmonisé*, there are indications that the situation in Adamawa and Yobe may improve until August 2017. However, the spill-over effect of the insurgency affecting other areas will continue to have negative impacts on the outcome indicators of food consumption, livelihoods and nutrition. The negative impacts are expected to be strongest in Borno State and light in Adamawa and Yobe States.

The IDP population is experiencing high malnutrition and mortality rates with access to health facilities and humanitarian assistance limited to government controlled areas. Malnutrition rates among women of reproductive age in Borno (15 percent) and Yobe (20 percent) are more than twice the national average of 7.4 percent. The situation is compounded by chronically high anaemia rates among women of childbearing age and the high prevalence of low birth weight children. In June 2016, due to the dire situation and need for immediate response to combat malnutrition, the Ministry of Health declared a state of nutrition emergency.

Restricted movements and fear of attacks have prevented farmers from working their fields. As a consequence, food production has been severely affected, with 23 percent of households producing crops in Borno, 59.8 percent in Adamawa, and 70.4 percent in Yobe. Eighty percent of the rural population depend on crop or livestock farming. Livelihoods are still affected, either modified or inaccessible, by the emergency for both IDP and host populations. In Borno alone 20 percent of the population report not having access to any livelihood activities. In addition, high inflation rates have further affected livelihoods and food security.

Response of the Government and Strategic Coordination

The overall humanitarian response in North East Nigeria was a government-led response with the National and State Emergency Management Agencies (NEMA/SEMA) being the lead at federal and state levels. In August 2016, strengthening its role in coordination for 2016 and beyond, the Government put in place an Inter-Ministerial Task Force (IMTF) under the leadership of the Ministry of Budget and National Planning.

The 2016 Humanitarian Response Plan (HRP) focused on the states that were mostly affected by the Boko Haram violence – Adamawa, Borno, Gombe and Yobe States. The HRP served as a framework of the Government and all other humanitarian actors to build a link between immediate and short term humanitarian response and longer term development activities.

Humanitarian partners relied on platforms such as the *Cadre Harmonisé*, which is the current regional framework aimed to prevent food crisis by quickly identifying affected populations and proffering appropriate measures to improve their food and nutrition security. The analysis used the food and nutrition security outcome indicators corroborated by relevant contributing factors to identify the food and nutrition insecure areas within the sixteen states of Nigeria (in the case of the October 2016 *Cadre Harmonisé*).

Other joint assessments on food security, nutrition, health, livelihood, water, sanitation and hygiene (WASH), protection and other sectors were carried out through inter-sector coordination initiatives. WFP played an active role in providing technical guidance on food security and vulnerability assessments as necessary. In addition, WFP and the food security sector members were guided by the needs outlined in the *Cadre Harmonisé* in preparing the sector response plans and requirements that were embedded in the 2016 HRP.

A sectorial approach to deliver humanitarian response was put in place to enhance coordination between various humanitarian actors and the government response. The activated humanitarian sectors in 2016 included nutrition, food security, health, protection, education, shelter/non-food items, WASH, logistics and emergency telecommunications. WFP co-leads the Food Security Sector with the Food and Agriculture Organization of the United Nations (FAO) and is the lead agency for the logistics and telecommunications sectors.

The Food Security Sector had a dedicated Coordinator and Information Management Officer who supported the 33 humanitarian actors that worked to provide efficient and coordinated humanitarian food assistance and livelihood support to the affected population. The sector Working Group meetings held at the capital and at field levels

ensured enhanced coordination and experienced strong government participation.

Through the Logistics and Emergency Telecommunications Sectors, dedicated staff were put in place to support government-led coordination with regards to the logistics and communications. This significantly improved coordination among various humanitarian actors and enabled enhanced information sharing and gap analysis, and actual service provision based on the gaps and requirements.

Summary of WFP Operational Objectives

WFP Nigeria supports government emergency response in North East Nigeria in addressing hunger by using food assistance where it adds value. WFP further assists the government through capacity development activities mainstreamed in its projects, and provides continuous support such as vulnerability analysis and mapping (VAM). WFP co-leads the Food Security sector with the Food and Agriculture Organization of the United Nations (FAO) and provides technical assistance and guidance in coordination with the sector to ensure efficient support is provided by the food security actors.

WFP Regional EMOP 200777 addresses acute food insecurity to vulnerable and displaced people affected by Boko Haram violence in North East Nigeria. The Nigeria component of the regional operation provides response through its various modalities of assistance namely, cash-based transfers (CBT), in-kind food distributions and prevention of malnutrition for children aged 6-59 months.

WFP also manages air services to the humanitarian community through the United Nations Humanitarian Air Services (UNHAS) under the Special Operation 200834.

In addition, WFP leads the Logistics and Telecommunications sectors in Nigeria in the framework of Special Operation 201032. Under the logistics component, WFP aims to facilitate access to sufficient and reliable logistics services and consolidated information related to logistics capacities, and to enhance the capacity of humanitarian community to deliver relief items to hard-to-access locations. The Emergency Telecommunications component aims to fill critical operational gaps requiring an immediate response in order to enable the timely and effective delivery of information and communications technology (ICT) services to the humanitarian community.

Country Resources and Results

Resources for Results

The 2016 Humanitarian Response Plan (HRP) released in December 2015 had a total requirement of USD 248 million. Out of the total, the Food Security and Nutrition requirements were USD 86 million. Needs consistently increased as areas became accessible and more internally displaced persons (IDPs) and affected host communities were identified for assistance. WFP's food assistance and nutrition response needs alone rose from 71 million USD in June 2016 to 92 million USD in December.

Compared to the other Lake Chad Basin countries, the Nigeria operation experienced a healthy funding response from the donor community enabling WFP to reach the targeted beneficiaries in 2016. The fact that several United Nations agencies put the Nigeria operation at highest corporate priority (internal Level 3), enabled donors to advocate for the situation in North East Nigeria to be on the agenda of international funding initiatives and grants.

Donor contributions to the emergency assistance as well as the common services of United Nations Humanitarian Air Service (UNHAS) and the Logistics and Emergency Telecommunications sectors were mostly flexible, and made it possible for WFP to significantly scale up its food assistance and through the sectors provide efficient common services within a few months.

Timely and flexible funding for food assistance enabled WFP to utilize funding as per the prioritised needs at the times the contributions were received. The flexibility of almost all the funds received from donors in 2016 enabled WFP to make use of advance financing until funds were confirmed to ensure the urgently needed commodities were purchased on time ensuring procurement at better prices. In addition, WFP was able to save on the lead time required for getting the assistance to beneficiaries. This enabled WFP to mitigate gaps in assistance. The major constraints remain security, access and unreliable infrastructure and systems in the case of cash-based transfers.

In spite of this, the current level of response is far below the overall humanitarian needs in the North East and WFP will continue to advocate for more resources, while scaling up further. WFP is already working to further scale up response to increase its target to 1.8 million people at the beginning of 2017.

Achievements at Country Level

According to the August 2016 *Cadre Harmonisé* analysis, 4.4 million people in Borno, Yobe and Adamawa were food-insecure. Out of these, 1.1 million people were severely food-insecure in Borno and Yobe States. As more locations in the North East became accessible, the figure almost doubled with 1.8 million people being severely food-insecure according to the October 2016 *Cadre Harmonisé*.

WFP has been present in Nigeria since September 2015 with an initial focus on capacity development, particularly to the National Emergency Management Agency (NEMA). In May 2016, to respond to the famine-like situation in the North East, WFP at the Government's request began food assistance operations in rural areas. WFP and partners activities were later scaled up in order to meet soaring needs in the region.

At the end of 2016, the Ministry of Health declared a state of nutrition emergency in Borno State calling for urgent life-saving humanitarian assistance in newly accessible areas. Since August 2016, WFP's North East operation was placed at the highest corporate priority (internal Level 3) to ensure that appropriate response mechanisms were activated for life-saving assistance to the most affected people. Experienced staff were rapidly deployed in the region while processes were put in place to hire long-term national and international staff in WFP's three established offices in Abuja, Maiduguri (covering Borno State) and Damaturu (covering Yobe State).

WFP increased its coverage and capacity by ramping up its engagement with international and national non-governmental organization (NGO) partners, signing field-level agreements (FLAs) to implement food distributions and nutrition assistance beginning October 2016. With generous and flexible contributions from donors who kept the Nigeria emergency operation a priority, WFP could undertake implementation.

WFP successfully scaled up its life-saving food assistance in Yobe and Borno States, first targeting 200,000 beneficiaries in June 2016, reaching 1 million by the end of December, surpassing its 2016 revised target of 724,000 people. Assistance was provided through cash-based transfers (CBT), in-kind food distributions, and provision of specialised nutritious foods (SNFs) to children aged 6-59 months. WFP ensured that a joint package of food and nutrition assistance was provided in most targeted locations.

To boost access to remote areas where no humanitarian assistance had been provided or was limited, WFP launched a Rapid Response Mechanism (RRM) in November with the United Nations Children's Fund (UNICEF). RRM teams flew in with the WFP-managed United Nations Humanitarian Air Service (UNHAS) helicopters to remote areas, or travelled by road when security allowed, and stayed up to six days providing a comprehensive package of food, nutrition, water and sanitation and other essential services. The RRM focused on remote locations handed over by the International Committee of the Red Cross with a total of 400,000 beneficiaries. By the end of December, just one month into the hand-over, WFP provided assistance to 300,000 people.

WFP has been co-leading the Food Security Sector with the Food and Agriculture Organization of the United Nations (FAO) since its early stage, and played an active role in needs assessment and targeting exercises with the vulnerability analysis and mapping activities. The Food Security Sector reached 1.9 million people with food assistance, agriculture production inputs and livelihoods activities in Borno, Yobe, Adamawa and Gombe States. Of the 1.9 million reached, WFP in partnership with the Government and other NGOs, provided life-saving food assistance to 1 million vulnerable people in Borno and Yobe States.

WFP played a lead role in the common humanitarian services of the Logistics Sector and Emergency Telecommunications Sector that were set up in November 2016, after needs were identified by the humanitarian community operating in North East Nigeria. Both sectors aimed to facilitate access to sufficient and reliable logistics and emergency telecommunications services and consolidated information, to enhance the capacity of the humanitarian community to deliver timely and uninterrupted response.

UNHAS allowed safe and timely access to the North East; using the fixed wing aircraft, the humanitarian community had access to Maiduguri and Yola several days a week while the UNHAS helicopter flew to various remote locations in Borno and Yobe States.

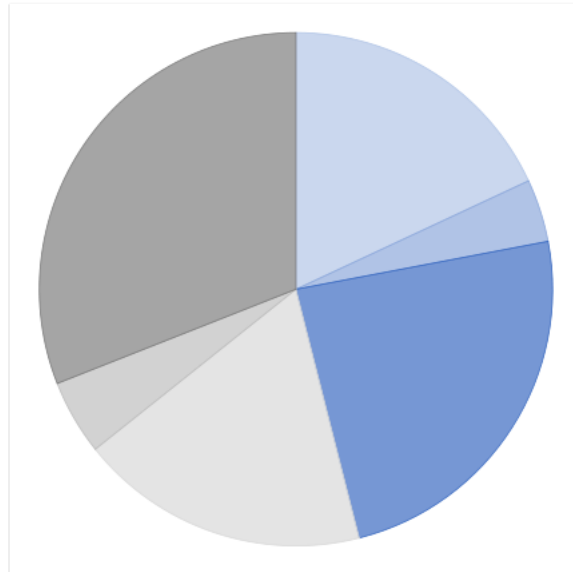


Annual Country Beneficiaries

Beneficiaries	Male	Female	Total
Children (6-23 months)	77,554	79,077	156,631
Children (24-59 months)	106,075	106,574	212,649
Children (5-18 years)	40,212	48,108	88,320
Adults (18 years plus)	244,378	315,139	559,517
Total number of beneficiaries in 2016	468,219	548,898	1,017,117

Country Beneficiaries by Gender and Age

- Children (under 5 years)
- Children (5-18 years)
- Adults (18 years plus)
- Children (under 5 years)
- Children (5-18 years)
- Adults (18 years plus)



Annual Food Distribution in Country (mt)

Project Type	Cereals	Oil	Pulses	Mix	Other	Total
Regional EMOP	11,039	944	3,838	2,673	-	18,494
Single Country IR-EMOP	-	-	-	48	-	48
Total Food Distributed in 2016	11,039	944	3,838	2,721	-	18,542



Cash Based Transfer and Commodity Voucher Distribution (USD)

Project Type	Cash	Value Voucher	Commodity Voucher
Regional EMOP	7,332,000	-	-
Total Distributed in 2016	7,332,000	-	-

Supply Chain

The Nigeria supply structure was designed for local procurement of beans, sorghum, millet and salt, while vegetable oil (85 percent), rice (100 percent) and all specialised nutritious foods – ready-to-use supplementary food (RUSF) and SuperCereal – were procured internationally via the Global Commodity Management Facility (GCMF), and in-kind donations. WFP originally planned to procure RUSF locally but could not go ahead as there were no organizations with the required capacity or products that met WFP quality standards. The main entry point for internationally purchased commodities is the port of Lagos. However, in 2016, to shorten the lead time, 100 percent of rice and vegetable oil were purchased locally at a cost approximately 50 percent higher than international purchase.

In 2016, Food Supplier Agreements were put in place to procure beans, rice, millet, sorghum and oil locally to shorten procurement lead time.

Regionally procured commodities were being used as a secondary sourcing option. For instance, commodities from Cameroon served Banki and Maiduguri Local Government Areas (LGAs) as required.

Locally procured commodities from suppliers were delivered directly to Maiduguri and Damaturu warehouses with a storage capacity of 27,000 mt, which allows for approximately 1.5 months of stock holding. This was based on estimated food distribution levels of approximately 19,000 mt per month in both states.

Transport contracting from Maiduguri and Damaturu to the food distribution points in targeted areas was done through local private transport companies. All food movements outside Maiduguri and Damaturu were monitored by the military and escorts were mandatory for insecure locations.

WFP led the Logistics Sector that was activated in September 2016. The Logistics Sector provided logistics coordination, civil-military liaison, logistics information management and logistics service provision by augmenting existing storage capacities in the main affected Borno State.



Annual Food Purchases for the Country (mt)

Commodity	Local	Regional/International	Total
Beans	6,287	1,379	7,666
Iodised Salt	199	30	229
Ready To Use Supplementary Food	100	-	100
Rice	17,021	865	17,886
Sorghum/Millet	6,136	-	6,136
Vegetable Oil	2,137	310	2,447
Total	31,880	2,584	34,465
Percentage	92.5%	7.5%	

Annual Global Commodity Management Facility Purchases Received in Country (mt)

Commodity	Total
Ready To Use Supplementary Food	286
Total	286

Implementation of Evaluation Recommendations and Lessons Learned

WFP revised its project budget three times in 2016 to adjust requirements and transfer modalities in a complex and evolving operating context. From various assessments undertaken, challenges faced and experiences gained, WFP revised its implementation strategy, by not only scaling up response but also remaining agile in terms of response options.

The cash-based transfer (CBT) modality experienced delays in the early months of implementation due to slow and poor registration data, but also challenges of the service provider Airtel that did not have the cash liquidity required to scale up the response. To overcome the slow registration pace, WFP expanded its options: using first the International Organization for Migration (IOM), partner in charge of internally displaced persons (IDPs) tracking and registration, then Yobe University, and hired volunteers, all using mobile phones. This resulted in large numbers registered into WFP's beneficiary registration platform SCOPE. To address the liquidity issue, Airtel gradually increased the number of agents on the ground.

During the last quarter of 2016, WFP significantly scaled up its response, while also addressing some of the challenges hampering cash transfer scale up. In a complex context, with most IDPs living in urban centres with host communities, WFP launched a Multi-Sectorial Capacity Assessment to determine the appropriate cash delivery mechanism (mobile transfer or electronic voucher). At the same time, Airtel engaged in identifying and recruiting more fixed agents to support the mobile cash transfer. As from the second quarter of 2017, WFP plans to introduce an additional cash delivery mechanism – end-to-end electronic vouchers using SCOPE – in areas with functional and integrated markets. This will further broaden WFP ability to scale up its response using CBT.

Security restrictions, resulting in limited access, were the main constraint for in-kind food distributions, including prevention of acute malnutrition programme. Delivery of food assistance outside the state capital cities was done using military escorts or local authorities, limiting the quantity of food to be sent to some locations, to reduce beneficiaries exposure to risks. To overcome this challenge, WFP expanded its partnerships and used a joint WFP-United Nations Children's Fund (UNICEF) Rapid Response Mechanism to deliver assistance in hard-to-reach areas, and was successful in reaching more people in remote areas. In November and December, WFP significantly increased in-kind assistance, including in areas that were previously targeted with CBT assistance which enabled WFP to reach more people.

The prevention of acute malnutrition programme faced protection challenges resulting from needs for crowd control particularly in IDP camps amidst unpredictable security concerns at distribution gatherings. WFP established innovative ways of managing challenging situations such as: engaging community volunteers for crowd control and issuing of colour-coded entitlement tokens in advance in densely populated locations; conducting stagger distribution for more than one day so as to serve more manageable crowds per day; sensitising on programme objectives with emphasis on malnutrition identification and prevention to ensure targeted beneficiaries are prioritised; and putting in place flexible contingency plans due to insecurity such as calling-off and rescheduling distributions whenever local authorities sounded warnings of such occurrences. Moreover, WFP is reviewing its prevention of acute malnutrition implementation strategy and coverage, including different approaches in specific geographical areas – focusing either on children aged 6-23 months, on 6-59 months, or a combination following specific criteria or protocols.

Project Objectives and Results

Project Objectives

The results of the joint Government and United Nations (UN) Assessment conducted in April 2016 indicated that it was critical to address the immediate nutritional needs of children aged 6-23 months, many of them already malnourished, requiring energy and nutrient-dense foods.

This Immediate Response Emergency Operation (IR-EMOP) was initiated with the objective to provide immediate life-saving assistance targeting children aged 6-23 months in Maiduguri and Jere Local Government Areas in Borno state.



Approved Budget for Project Duration (USD)

Cost Category	
Direct Support Costs	23,260
Food and Related Costs	1,378,609
Indirect Support Costs	98,131
Total	1,500,000

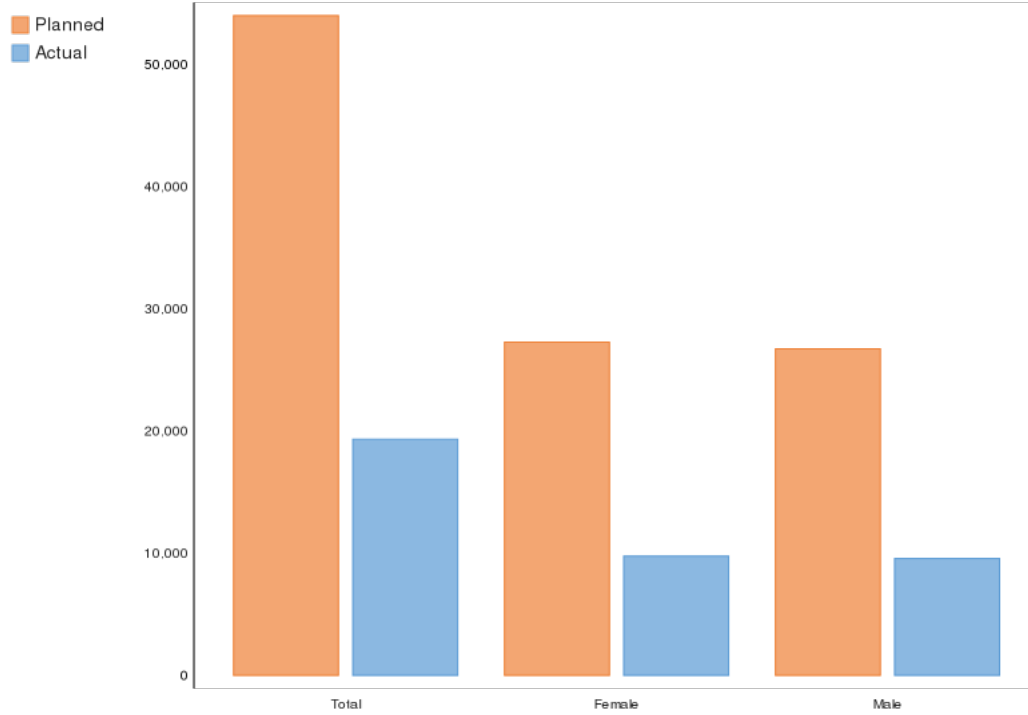
Project Activities

WFP secured a waiver to procure internationally and import specialised nutritious food Plumpy'Sup, and airlifted the commodity for storage in Maiduguri for immediate distribution.

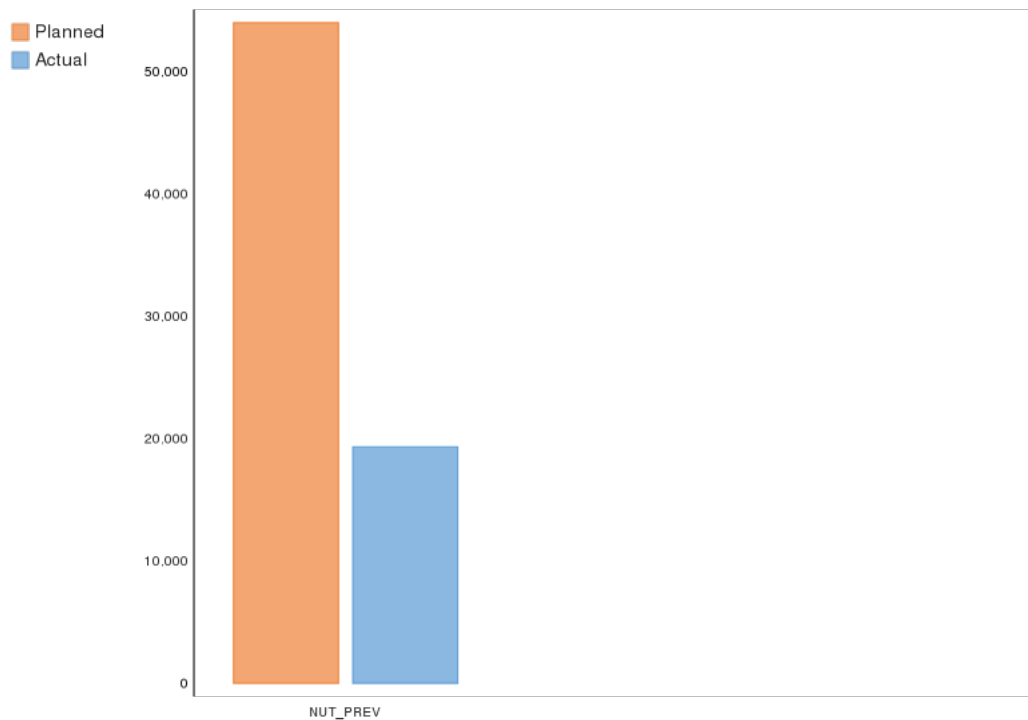
WFP distributed the food to children aged 6-23 months in camp settings in Maiduguri and Jere Local Government Areas (LGAs) and in recently accessible areas of highly food insecure LGAs in Borno state. All children in this age category in the targeted areas were assisted under the prevention of acute malnutrition programme.

WFP ensured that the specialised nutritious food to the extent possible was complemented with the cash-based transfers (CBT) that had started to be rolled out by WFP under the Regional EMOP 200777 in Maiduguri and Jere LGAs.

Annual Project Beneficiaries

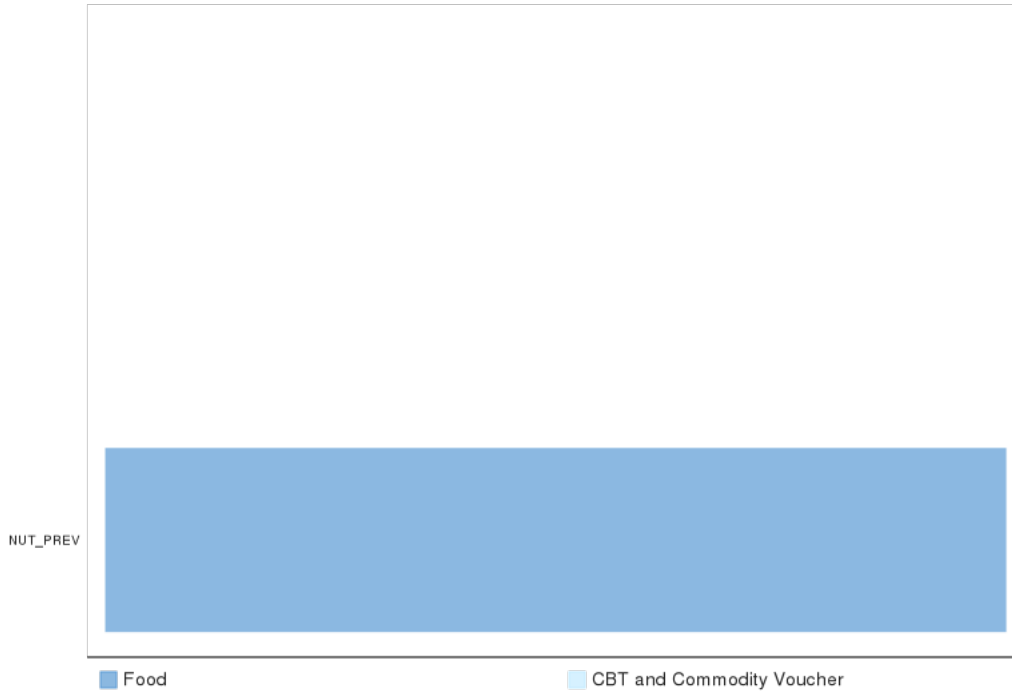


Annual Project Beneficiaries by Activity



NUT_PREV: Nutrition: Prevention of Acute Malnutrition

Modality of Transfer by Activity



NUT_PREV: Nutrition: Prevention of Acute Malnutrition



Annual Project Food Distribution

Commodity	Planned Distribution (mt)	Actual Distribution (mt)	% Actual v. Planned
Ready To Use Supplementary Food	298	48	16.2%
Total	298	48	16.2%

Operational Partnerships

WFP worked closely with and leveraged staff of the National Emergency Management Agency (NEMA) and the State Emergency Management Agency (SEMA) as per the Memorandum of Understanding (MOU) drawn between the agencies. The MOU focused primarily on providing capacity strengthening to NEMA and SEMA in a number of areas agreed upon by both parties, with the overall objective of strengthening the agency's emergency preparedness and response capacity. Examples of the ways in which WFP supported the existing capacity of SEMA and NEMA include: training of national volunteers to assist food-insecure population with food assistance, warehouse management and storage of humanitarian assistance, beneficiary registration and distribution of food assistance using a protection lens, joint monitoring missions, coordination of inter-sectoral convoy requirements, and food security assessments and response analysis.

Close collaboration, coordination and cross-referral with the United Nations Children's Fund (UNICEF) nutrition programmes continued, as well as coordination with the humanitarian actors on the ground and relevant government authorities.

NEMA and SEMA jointly managed the camps in Maiduguri and Jere Local Government Areas (LGAs) and conducted the distribution of the specialised nutritious food alongside the daily wet meal they provided. Outside of Maiduguri and Jere LGA, WFP organized the logistical aspects and coordinated with relevant government entities, the United Nations (UN) and other humanitarian actors to ensure safe access and transportation of the nutritious products to the targeted areas.

Performance Monitoring

The WFP monitoring and evaluation (M&E) strategy for Nigeria in 2016 was designed and implemented based on the normative framework for monitoring by country offices. The strategy is multifaceted with focus on operational delivery of outputs, programme outcomes and impact metrics with respect to the Sustainable Development Goals (SDGs) 2 and 17. For this IR-EMOP, data collection exercises were categorised to address activity implementation monitoring, distribution monitoring, warehouse monitoring and post-distribution monitoring.

The activity implementation monitoring was conducted through direct observation and interviews with beneficiaries conducted by WFP and the National Emergency Management Agency (NEMA) and the State Emergency Management Agency (SEMA) staff at the activity sites. The process was designed to primarily determine beneficiary perceptions in relation to the activities.

WFP also conducted distribution monitoring to determine if food distribution was timely and orderly. This was conducted through direct observation and beneficiary contact monitoring during the actual distribution. During such exercises, data quality spot checks were made to verify the proper use of beneficiary lists, ration cards and weighing scales. Distribution sites were also inspected to ensure safety, cleanliness, availability of services and proximity to beneficiary households.

A toll free line was put in place to enable beneficiaries to provide feedback and complaints. Follow up was done by sending WFP staff back to the communities to address challenges. With regards to the cash-based transfer, WFP went with the service provider (Airtel) staff to the field in case of any technical difficulties with the mobile cash transfers. WFP also had staff in place at distribution sites to receive complaints.

Results/Outcomes

Under this immediate response operation, WFP reached 35 percent of the target due to challenges related to inaccessibility caused by security restrictions and lack of adequate partner presence to operate with on the ground. Nevertheless, as the operation was succeeded by the extensive emergency operation, WFP continued to provide assistance to the beneficiaries in the targeted areas.

According to the Emergency Food Security Assessment (EFSA), more than half of the assessed population in Maiduguri (52 percent) is food insecure, of which 5 percent are severely food insecure. The remaining 48 percent are only marginally food secure, therefore their situation could deteriorate if exposed to further shocks or go without food assistance. The EFSA further indicates that food insecurity affected the internally displaced person (IDP) households more than the local populations: about 66 percent of the IDPs are food insecure in comparison to 41 percent of the host population.

The EFSA also indicates that overall, 30 percent of the assessed population has a poor food consumption, meaning that households' diet is inadequate to be food secure. These households' meals are mainly composed of cereals and some vegetables. Their consumption of dairy products, animal proteins-rich food and pulses is very limited or non-existent. Borderline food consumption characterises the remaining 26 percent of the population. Those households with an acceptable food consumption are characterised by better food consumption patterns. They have more frequent consumption of animal protein-rich food, in particular fish (22 percent), meat (6 percent), eggs (9 percent) and dairy products (15 percent). Only 29 percent of the IDPs have an acceptable food consumption compared to 58 percent of the host population.

In the assessed area, screening for malnutrition revealed that 8.3 percent of children aged 6-59 months have below normal mid-upper arm circumference (red or yellow MUAC) – 9.5 percent of IDPs and 7.5 percent of host population – which can be considered a medium prevalence of low MUAC. Although the overall rate remains below 10 percent, the prevalence of low MUAC (moderately and severely low) in children aged 6-23 months is 16 percent, which is well above the emergency threshold. However, young children from the host communities show a higher prevalence of low MUAC compared to their displaced peers (a prevalence of 17.9 percent against 14.3 percent).

Progress Towards Gender Equality

WFP continued to prioritise and address the needs of the most vulnerable men, women, boys and girls in delivering its assistance throughout 2016. In North East Nigeria women are the most vulnerable groups in areas of displacement and return. During the reporting period, this group faced a range of threats including attacks and

abuse, and exploitation and use of negative coping mechanisms – transactional sex being one of them.

Regular consultations were conducted with women and girls in target areas during the project design and implementation phases. The active participation of women ensured that their inputs informed project design and that the specific needs of targeted communities were factored in. During the beneficiary registration process, WFP sensitised community members on the important role that women play in household food security and the reasons for registering women as the household heads. Composition of food management committees with 50 percent representation of women and men was also facilitated.

Protection and Accountability to Affected Populations

WFP has a three-pronged approach to integrate protection into its programme activities. Firstly, WFP worked to develop the capacity of partners including the mobile operator's agents and government counterparts through trainings, field missions and as a standing item in partner meetings and the food security working group, to strengthen the integration of protection into food assistance activities. Secondly, checklists and guidelines have been shared. The guidelines outline measures ranging from working with community leaders, women's groups and others to identify the most vulnerable, to considering access barriers such as distance, timing or cultural concerns such as separate queues for women and men, and specific measures for registration such as selecting an alternate in cooperation with Protection Agencies to reach the most vulnerable for cash and in-kind assistance. Thirdly, WFP regularly monitors the adherence to protection standards of partners, including barriers to access food assistance in a safe and dignified manner, with results feeding back into the programme cycle and performance evaluation of partners.

WFP worked towards ensuring that the distribution sites were safe and accessible to the most vulnerable persons such as disabled, elderly persons, unaccompanied minors, those severely sick. Sensitisation sessions were held with communities to discuss and encourage implementation of community-based protection mechanisms such as travelling in groups to and from distribution points in order to reduce vulnerabilities to attacks. According to June 2016 post-distribution monitoring (PDM) report for Borno state, 99 percent of the beneficiaries did not face any safety problems while going to, at and from a WFP programme site. Constraints/incidents reported occurred at the distribution site and were related to long wait time to receive entitlement and the large uncontrollable crowds at the sites. WFP acknowledges that the 99 percent perception of safety of beneficiaries accessing distribution sites might be attributed to cultural taboos that refrain some beneficiaries from freely stating security concerns to accessing assistance. Further, there might be an element of fear among the community that divulging information about safety constraints might lead to the cessation of the nutrition assistance. To mitigate this, the purpose of the PDM, as a means for gathering information and a way of informing future assistance, are clearly explained at the start of every interview or focus group discussion and respondents are advised to reply as honestly as possible.

In order to minimise waiting time and to better control the crowds, WFP initiated multiple Plumpy'Sup distribution points to ensure limited number of beneficiaries are present at one distribution site at any one time. WFP also coordinated with community leaders to stagger beneficiaries receiving assistance so as not to require them to wait hours before they get served or going back without being served. Beneficiaries were also informed in advance of the dates of distributions based on the distribution points highlighted in their ration cards. Vulnerable persons were prioritised in queues during distribution, ideally having a separate line for easy access for persons with specific needs wherever possible.

The June PDM indicated that 41 percent of WFP programme participants were informed about WFP programme (i.e. how people were chosen to receive the WFP assistance, entitlement to receive, and where to go if they have a complaint/question). Low performance was attributed to limited knowledge by beneficiaries on selection criteria for WFP assistance. In an effort to reach all the households with information regarding the programme, WFP intensified its information provision on targeting criteria, ration entitlements and the timing of Plumpy'Sup distributions through community meetings and regular sharing of information by internally displaced person (IDP) representatives using the local language. Ration entitlements were also presented in posters at distribution sites. Sensitisation sessions for communities included a range of protection topics, their rights vis-à-vis humanitarian agencies with specific focus on WFP's zero tolerance policy on sexual exploitation and abuse and where to report any protection issues related to food assistance. Complaints and feedback mechanisms are in place where beneficiaries call the WFP 24-hour hotline toll free number to give their feedback or file their complaints to WFP. In some locations in the newly liberated areas with no phone network, help desks were established to receive complaints on site and immediately address them. Regular field visits and spot checks were also conducted to monitor the progress of the activities. Focus group discussions were held with different groups of community members including women and men only groups. The complaints and feedback mechanisms in place provided an open communication channel to communities to voice their suggestions and feedback on WFP interventions thus contributing to improved quality of

WFP programmes.

Story Worth Telling

Boko Haram violence has led to one of the most acute – and sorely neglected – humanitarian crises in the world. At the time of the design of the IR EMOP, over 2.1 million people were reported to have been displaced in northeastern Nigeria. Of these, more than a million are children.

Fama, mother of seven, was among those uprooted by Boko Haram and now taking refuge in a dilapidated school building in Maiduguri. “I lost my husband to Boko Haram. There are many other women like me here. We walked for 77 km, trembling with fear. We wanted to escape the Boko Haram attacks at all costs.”

By the time WFP initiated the IR EMOP, food insecurity had reached an extreme level. Hence WFP took quick action to finance the project from WFP’s internal loan mechanism until donor contributions were secured. This allowed for the immediate provision of specialised nutritious food to the affected children. WFP made efforts to combine the nutritious food assistance as much as possible with the cash-based transfer programme that was already being rolled out through the regional Emergency Operation.

Fama and her children were among those who benefited from this combined assistance package. Her youngest child who is under the age of two benefited from WFP’s specialised nutritious food that was airlifted into the country and delivered to Maiduguri for immediate distribution. “We didn’t have food to eat. With this money, my children will be able to eat. I am very happy”, says Fama who was registered to receive in addition to the nutritious food for her child, a monthly transfer of 17,000 Naira (equivalent to USD 53) which was enough for her to buy a variety of nutritious food items of her choice to sustain her family in the absence of any other income.

Figures and Indicators

Data Notes

Cover page photo © WFP/ Amadou Baraze

A child receives specialised nutritious food distributed by WFP in Farm Center IDP camp in Maiduguri.

Overview of Project Beneficiary Information

Table 1: Overview of Project Beneficiary Information

Beneficiary Category	Planned (male)	Planned (female)	Planned (total)	Actual (male)	Actual (female)	Actual (total)	% Actual v. Planned (male)	% Actual v. Planned (female)	% Actual v. Planned (total)
Total Beneficiaries	26,730	27,270	54,000	9,565	9,759	19,324	35.8%	35.8%	35.8%
By Age-group:									
Children (6-23 months)	26,730	27,270	54,000	9,565	9,759	19,324	35.8%	35.8%	35.8%
By Residence status:									
Internally displaced persons (IDPs)	26,730	27,270	54,000	9,565	9,759	19,324	35.8%	35.8%	35.8%

Participants and Beneficiaries by Activity and Modality

Table 2: Beneficiaries by Activity and Modality

Activity	Planned (food)	Planned (CBT)	Planned (total)	Actual (food)	Actual (CBT)	Actual (total)	% Actual v. Planned (food)	% Actual v. Planned (CBT)	% Actual v. Planned (total)
Nutrition: Prevention of Acute Malnutrition	54,000	-	54,000	19,324	-	19,324	35.8%	-	35.8%

Annex: Participants by Activity and Modality

Activity	Planned (food)	Planned (CBT)	Planned (total)	Actual (food)	Actual (CBT)	Actual (total)	% Actual v. Planned (food)	% Actual v. Planned (CBT)	% Actual v. Planned (total)
Nutrition: Prevention of Acute Malnutrition	54,000	-	54,000	19,324	-	19,324	35.8%	-	35.8%

Nutrition Beneficiaries

Nutrition Beneficiaries

Beneficiary Category	Planned (male)	Planned (female)	Planned (total)	Actual (male)	Actual (female)	Actual (total)	% Actual v. Planned (male)	% Actual v. Planned (female)	% Actual v. Planned (total)
Nutrition: Prevention of Acute Malnutrition									
Children (6-23 months)	26,730	27,270	54,000	9,565	9,759	19,324	35.8%	35.8%	35.8%
Total beneficiaries	26,730	27,270	54,000	9,565	9,759	19,324	35.8%	35.8%	35.8%

Resource Inputs from Donors

Resource Inputs from Donors

Donor	Cont. Ref. No.	Commodity	Purchased in 2016 (mt)	
			In-Kind	Cash
MULTILATERAL	MULTILATERAL	Ready To Use Supplementary Food	-	286
		Total	-	286