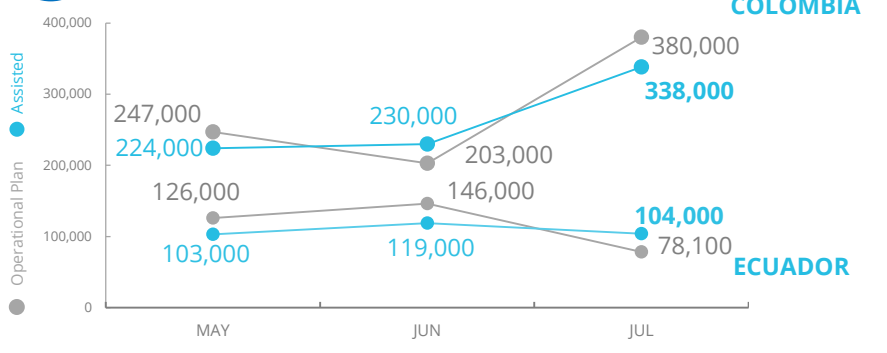
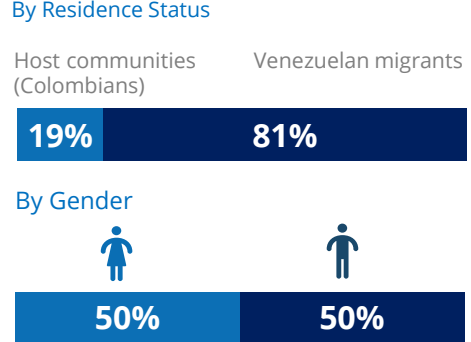


Colombia - Venezuela Border Crisis

PEOPLE ASSISTED BY WFP



WFP Colombia



3.7m
Venezuelan Refugees and migrants in Latin America and the Caribbean¹

1.8m
Venezuelan migrants in Colombia²

363,000
Venezuelan migrants in Ecuador³



□ Country Office
 ★ National Capital
 ⚓ Border Crossing Point
 — International Boundary
○ Sub Office
 ● Major Town
△ Field Office
● Intermediate Town
 WFP Operational Presence for L2 Response
 — Department Boundary

Sources: WFP, UNGIWG, GAUL, GLCSC, OCHA, UNHCR.
 The designations employed and the presentation of material in the map(s) do not imply the expression of any opinion on the part of WFP the delimitation of its frontiers or boundaries.
 © World Food Programme 2020.

FUNDING

Net Funding Requirements (US\$)

September 2020 – February 2021

WFP Colombia: L2
Emergency Response

115m

WFP Ecuador: Regional
Migrant Response

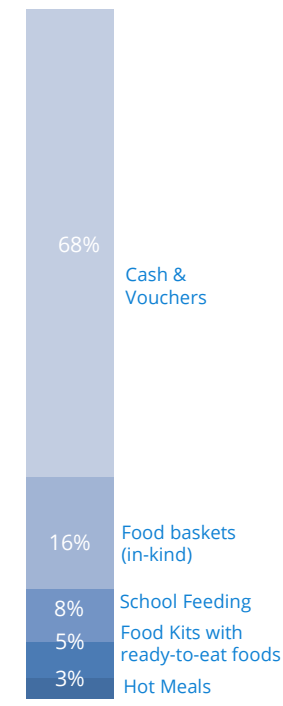
19m

OPERATIONAL PROFILE

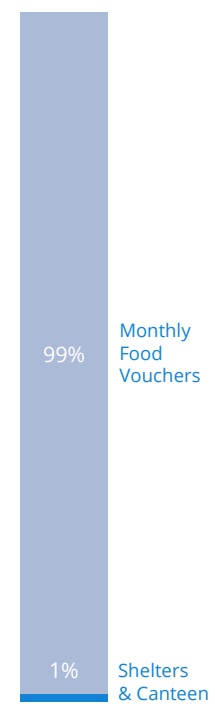
People reached

July 2020

WFP Colombia



WFP Ecuador



SOURCE: WFP, 10 SEP 2020

COVID-19 Operational Impact

- Status: WFP Response
- ✔ **Colombia**
School feeding: Adaptation to take-home rations
 - ✔ Food baskets (in-kind): Significant scale-up ongoing in remote areas
 - ✔ Cash & Vouchers: Expansion of CBT is ongoing as a safer delivery modality
 - ✔ Shock-responsive social protection (SRSP) pilot to support migrants and Colombians in extreme poverty
 - ! Hot meals: Most community kitchens are temporarily closed, smaller ones and those operating in shelters continue functioning
 - ✔ Relief support to Venezuelan returnees through food kits
 - ✔ Emergency relief support in the Colombian Amazon region, including for indigenous populations.
 - ✔ Expansion to urban areas, including cash assistance in Bogotá.
 - Ecuador**
 - ✔ Temporary food assistance to Ecuadorian returnees in the province of Guayas
 - ✔ Monthly Food Vouchers: Targeting expanded to the most vulnerable households whose assistance has come to an end
 - ✘ Kits & Vouchers at borders: Suspended due to borders closure
 - ! Shelters & Canteens: 19 out of 24 shelters and canteens assisted vulnerable population. WFP supplies hygiene kits.
- ✔ New
 ✔ Ongoing
 ! Partially Suspended
 ✘ Suspended

WFP LEVEL 2 EMERGENCY SINCE 30 MARCH 2018

SITUATION REPORT and COUNTRY BRIEFS

