

WFP LEVEL 3 EMERGENCY

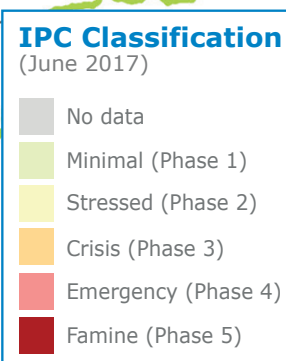
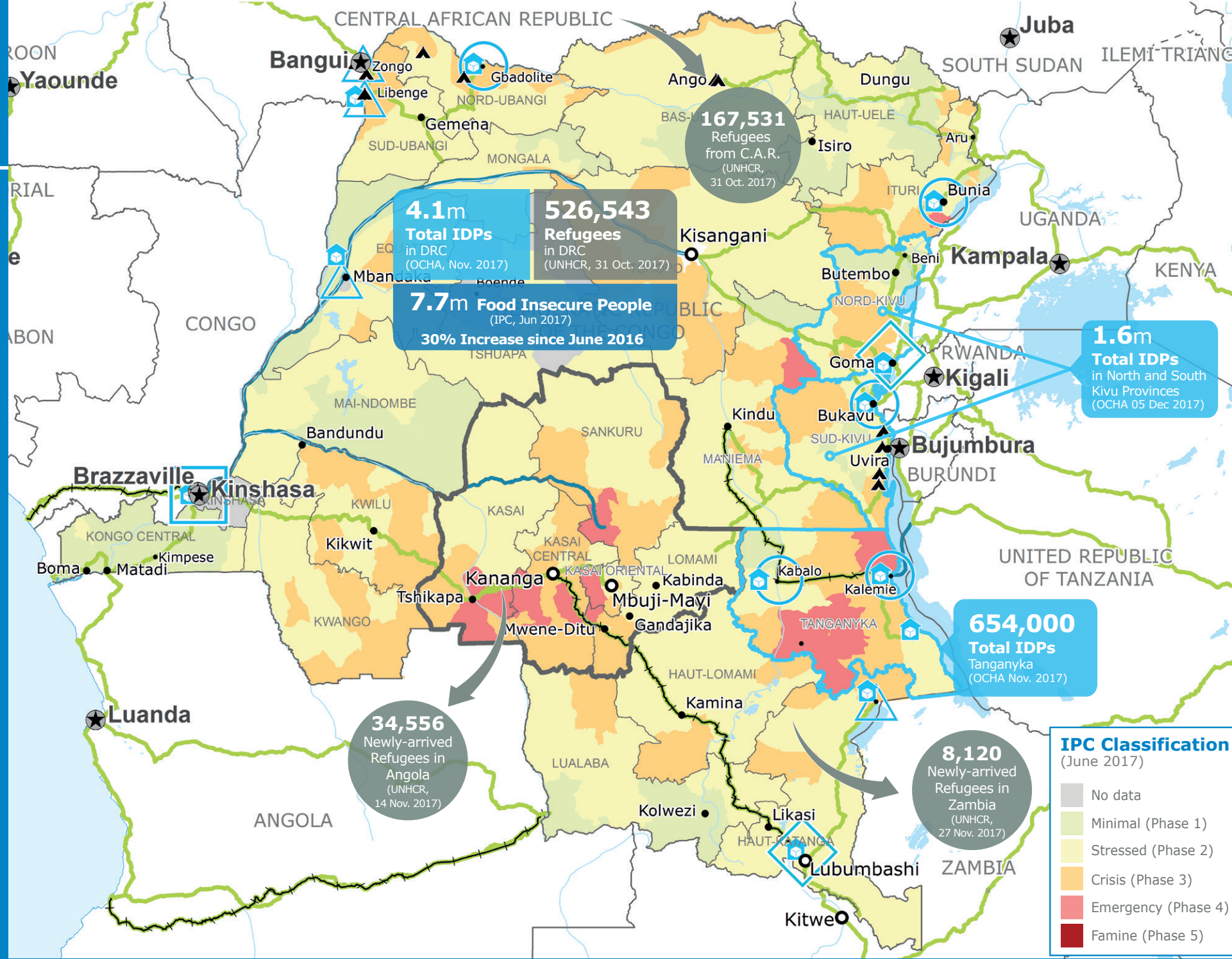
SINCE 06 OCTOBER 2017

For more information, see the **SITUATION REPORT** and **COUNTRY BRIEF** www.wfp.org/countries/congo-democratic-republic

2A PRRO 200832
<http://documents.wfp.org/stellent/groups/public/documents/ep/WFP284303.pdf>

Produced by the WFP Operations Centre (OPSCEN) jointly with Country Office and Regional Bureau Johannesburg

This dashboard is based on best available information at the time of production. Future updates may vary as new information becomes available.



- Country Office
- Area Office
- Sub Office
- Field Office
- Warehouse
- Refugee Camp
- Road Supply Route
- Railway Supply Route
- Water Supply Route
- National Capital
- Major Town
- Intermediate Town
- Small town
- International Boundary
- Province boundary
- River
- Surface Waterbody

Sources: WFP, UNGIWG, GAUL, GLCSC, OCHA, UNHCR, IPC

The designations employed and the presentation of material in the map(s) do not imply the expression of any opinion on the part of WFP concerning the legal or constitutional status of any country, territory, city or sea, or concerning the delimitation of its frontiers or boundaries. © World Food Programme 2017