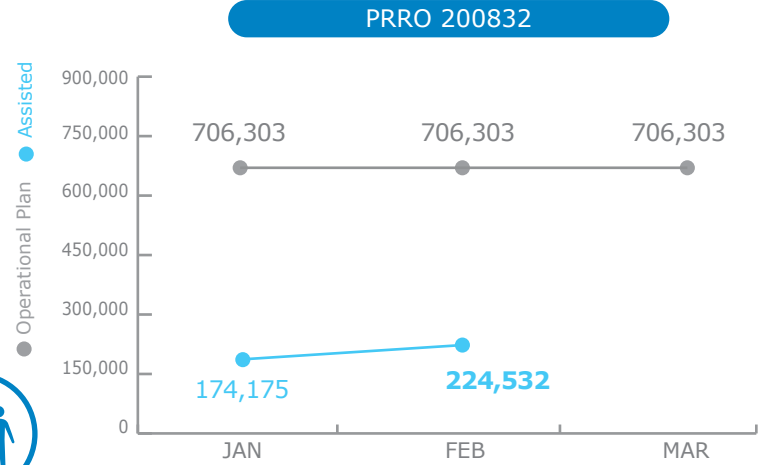
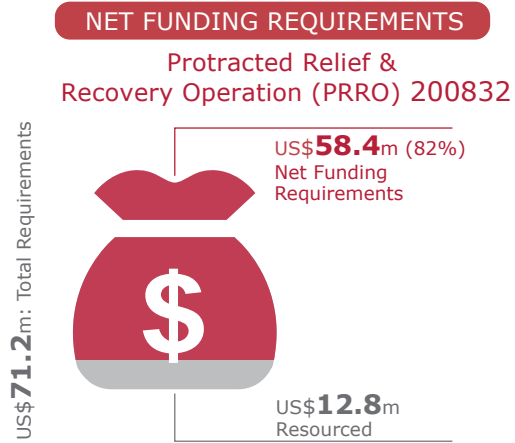


PEOPLE ASSISTED



FUNDING

April - September 2017

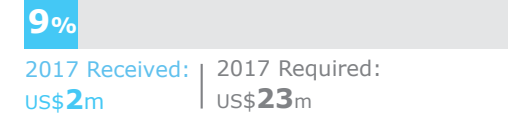


2017 PROJECT RESOURCES

Special Operation 201016
Humanitarian Air Services (UNHAS)



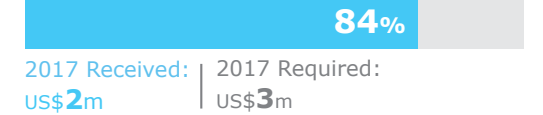
Special Operation 200864
Emergency Road Infrastructure Repairs



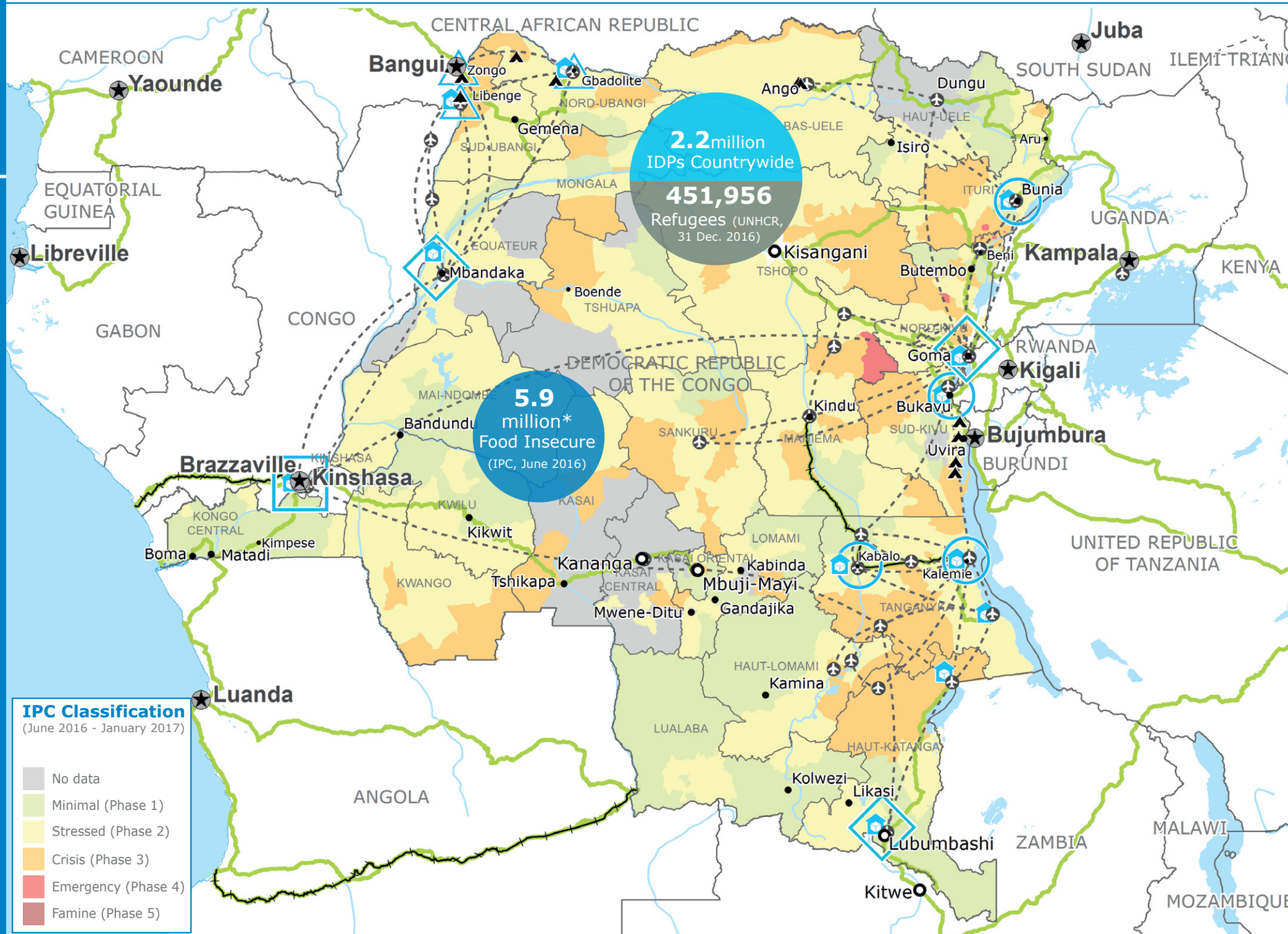
Special Operation 200661
Food Security Cluster Coordination



Special Operation 200747
Logistics Cluster Coordination



Source: WFP, 22 March 2017



IPC Classification (June 2016 - January 2017)

- No data
- Minimal (Phase 1)
- Stressed (Phase 2)
- Crisis (Phase 3)
- Emergency (Phase 4)
- Famine (Phase 5)

- Country Office
- Field Office
- UNHAS Connection
- National Capital
- International Boundary
- Area Office
- Warehouse
- Road Supply Route
- Major Town
- Province boundary
- Sub Office
- Refugee Camp
- Intermediate Town
- River
- Small town
- Surface Waterbody

Sources: WFP, UNGIWG, GAUL, GLSCS, OCHA, UNHCR, IPC
The designations employed and the presentation of material in the map(s) do not imply the expression of any opinion on the part of WFP concerning the legal or constitutional status of any country, territory, city or sea, or concerning the delimitation of its frontiers or boundaries.
© World Food Programme 2017

REFUGEES

Refugee outflow from DRC

Uganda	224,098
Rwanda	73,146
Tanzania	62,505
Burundi	57,055
Zambia	20,236
South Sudan	14,477
C.A.R.	12,223
Republic of Congo	4,708
Total	468,448

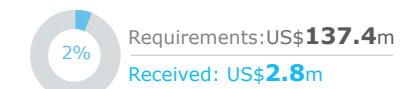
Refugee inflow to DRC

Rwanda	245,052
C.A.R.	103,420
South Sudan	71,529
Burundi	39,499
Other Countries	1,411
Total	451,956

Source: UNHCR, 28 February 2017

WFP-LED & CO-LED CLUSTERS

Food Security and Livelihoods Cluster

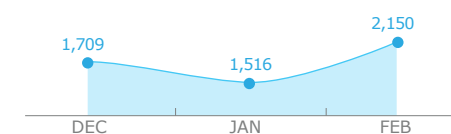


Number of Partners

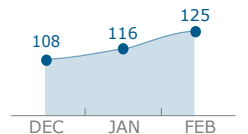
67
(2017)

UN Humanitarian Air Service (UNHAS)

Passengers Transported



Organizations Served



Sources: OCHA FTS, 15 March 2017; WFP, 22 March 2017

WFP LEVEL 2 EMERGENCY

SINCE 12 DECEMBER 2013

For more information, see the **SITUATION REPORT** and **COUNTRY BRIEF** www.wfp.org/countries/congo-democratic-republic

2A PRRO 200832

<http://documents.wfp.org/stellent/groups/public/documents/ep/WFP284303.pdf>

Produced by the WFP **Operations Centre (OPSCEN)** jointly with Country Office and Regional Bureau Johannesburg

This dashboard is based on best available information at the time of production. Future updates may vary as new information becomes available.