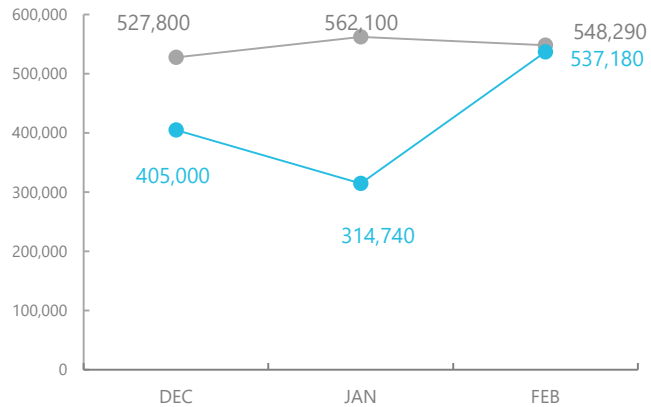




World Food Programme

Burkina Faso

PEOPLE ASSISTED Country Strategic Plan (CSP)

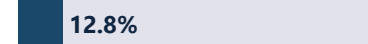


SOURCE: WFP, 23 MAR 2020

FUNDING Burkina Faso Country Strategic Plan (CSP) of which for the Emergency Response:

April 2020 – September 2020
Net funding requirements
US\$54m

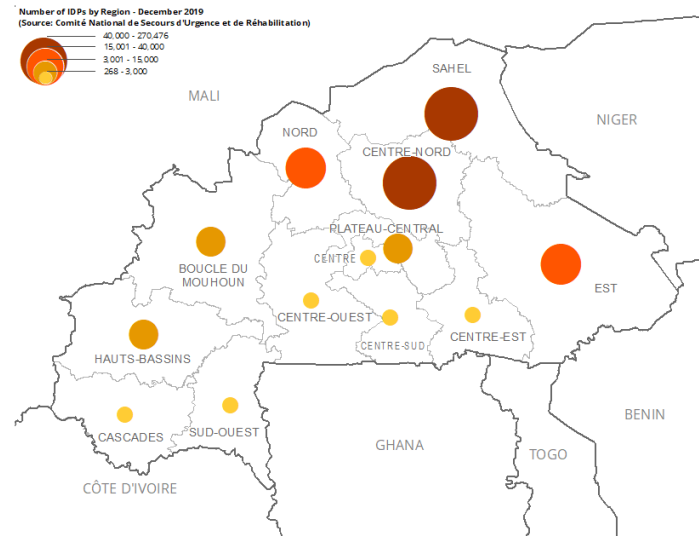
2020 HUMANITARIAN RESPONSE PLAN



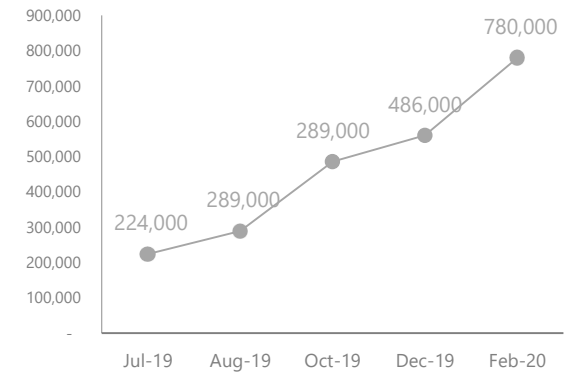
Allocated Contributions: US\$39.8m
Requirements: US\$311.6m

SOURCE: WFP, 10 APR 2020
FTS, APR 2020

INTERNAL DISPLACEMENT CONCENTRATION AS OF DECEMBER 2019



INTERNAL DISPLACEMENT FIGURES



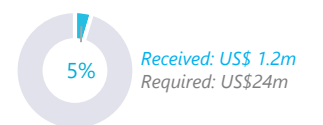
SOURCE: OCHA, Gov (CONASUR), 09 DEC 2019

WFP-LED AND SUPPORTED CLUSTERS

FOOD SECURITY SECTOR



NUTRITION SECTOR



SOURCE: FTS, APR 2020

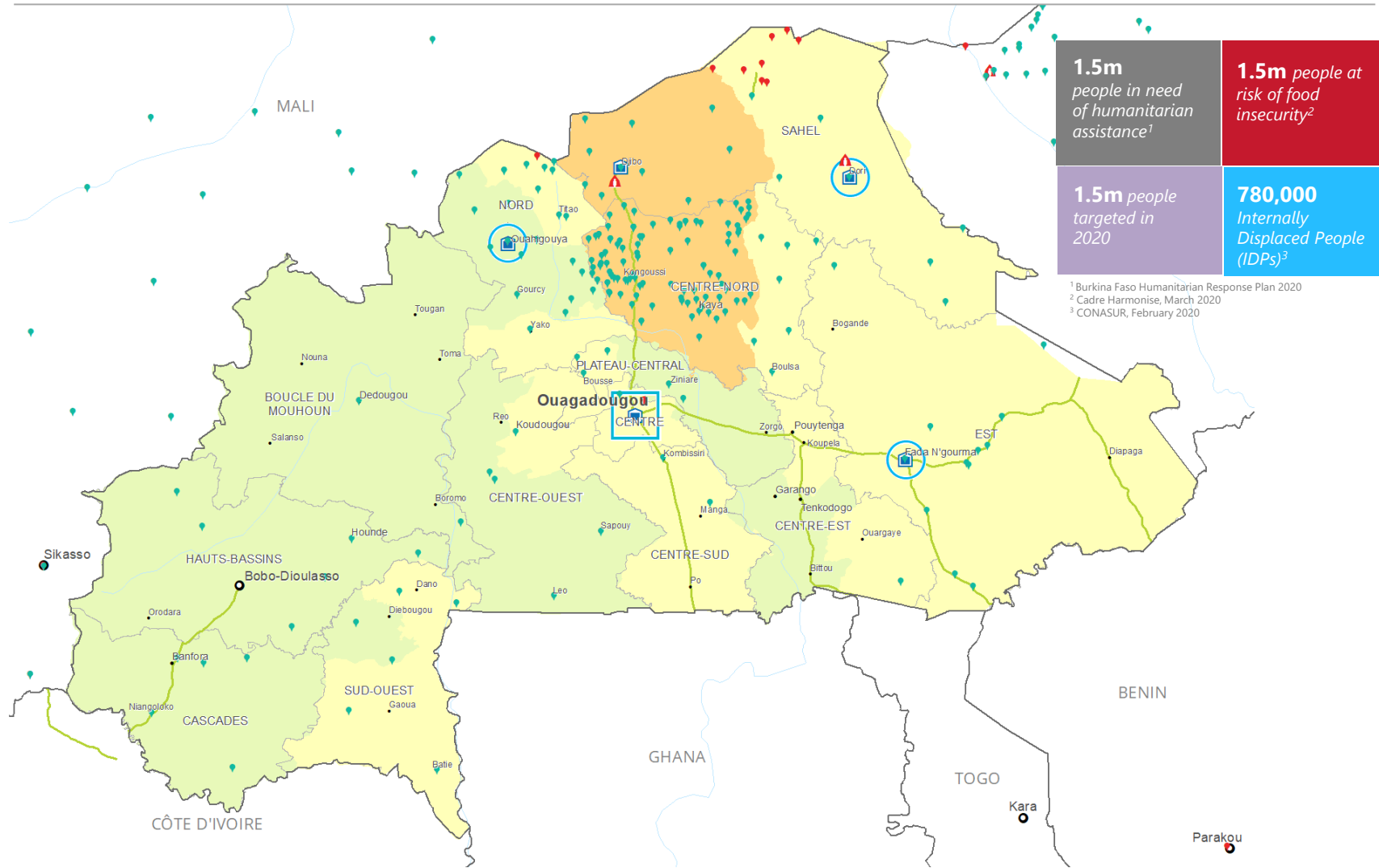
WFP LEVEL 3 EMERGENCY

Level 2 Emergency since 10 May 2019 and part of the Central Sahel Level 3 Emergency since 09 September 2019

For more information, see the [SITUATION REPORT](#) and [COUNTRY BRIEF](#)
<https://www.wfp.org/countries/burkina-faso>

Burkina Faso Country Strategic Plan
<https://www.wfp.org/operations/6f02-burkina-faso-country-strategic-plan-2019-2023>

Produced by the WFP Operations Centre (OPSCEN) jointly with Country Office and Regional Bureau Dakar. This dashboard is based on best available information at the time of production. Future updates may vary as new information becomes available.



CH Food Security Classification June – August 2020 projection



Sources: WFP, OCHA, UNHCR, CONASUR.

The designations employed and the presentation of material in the map(s) do not imply the expression of any opinion on the part of WFP concerning the legal or constitutional status of any country, territory, city or sea, or concerning the delimitation of its frontiers or boundaries. © World Food Programme 2020.