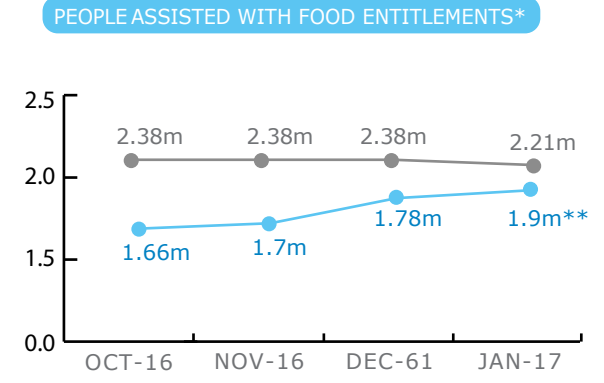
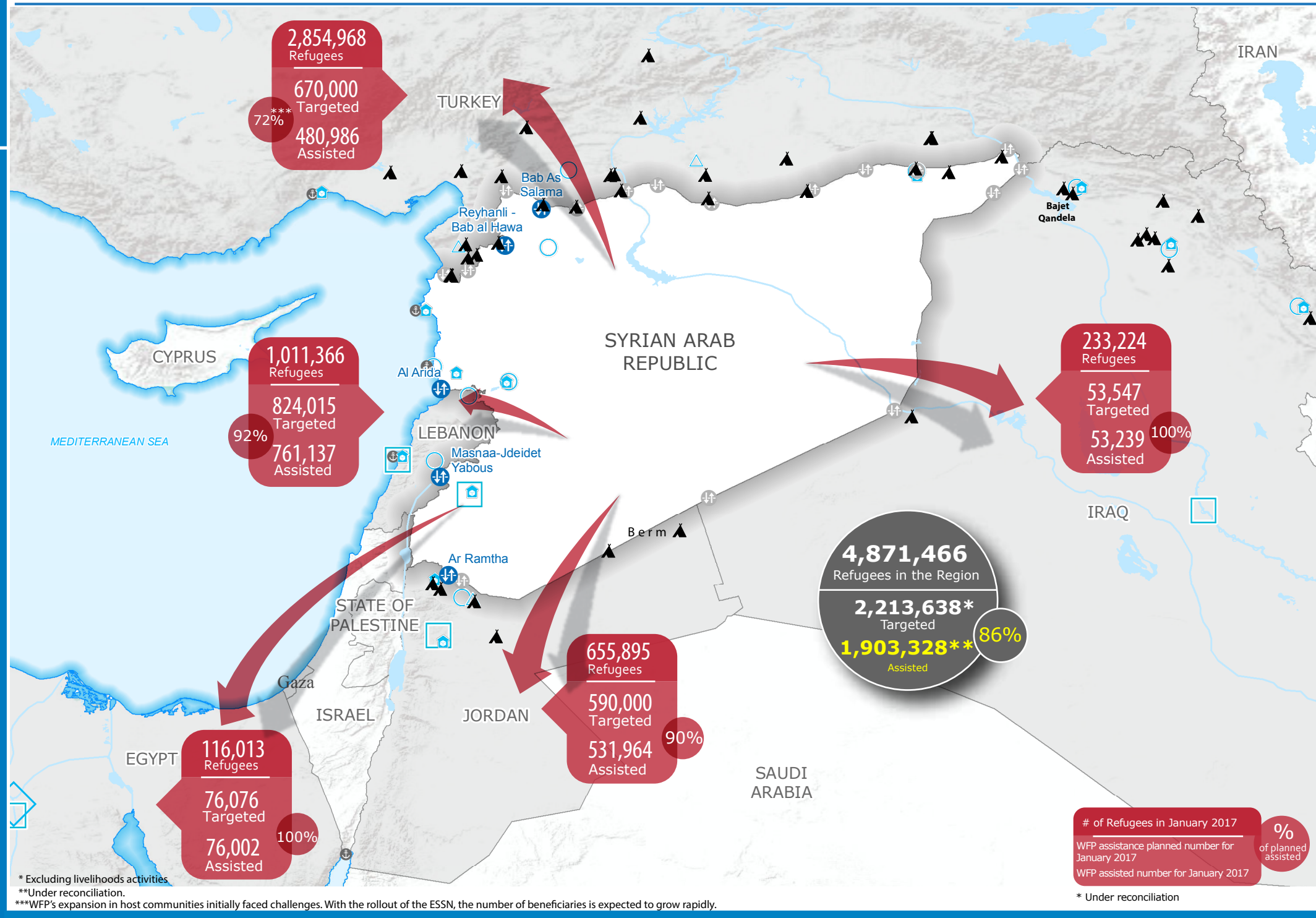
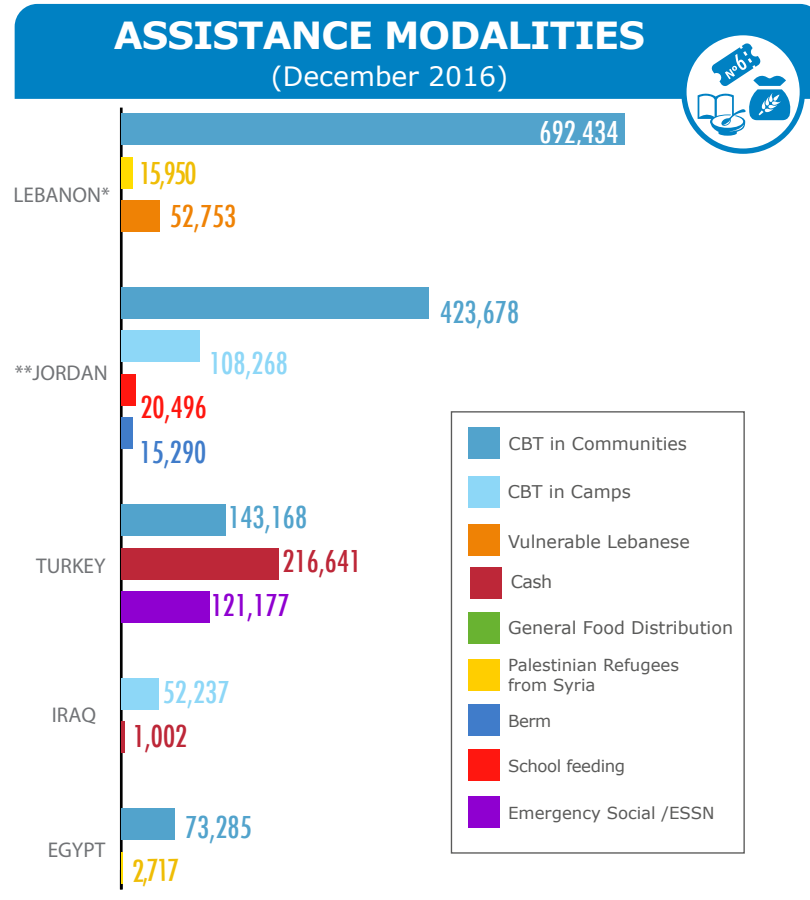
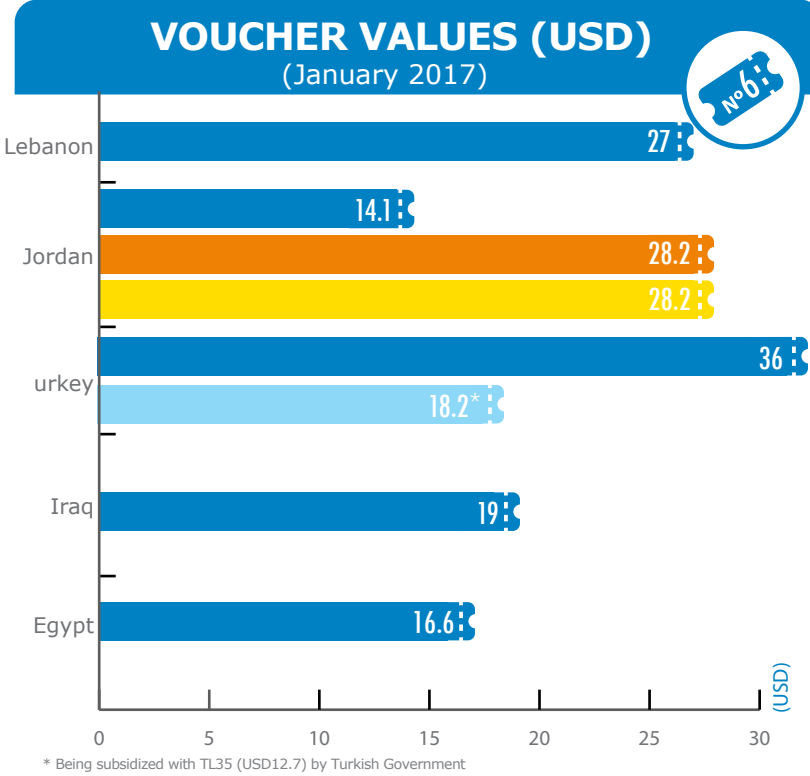
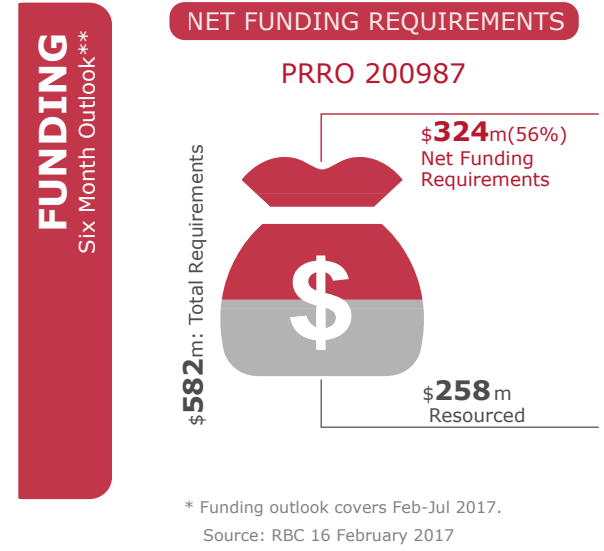
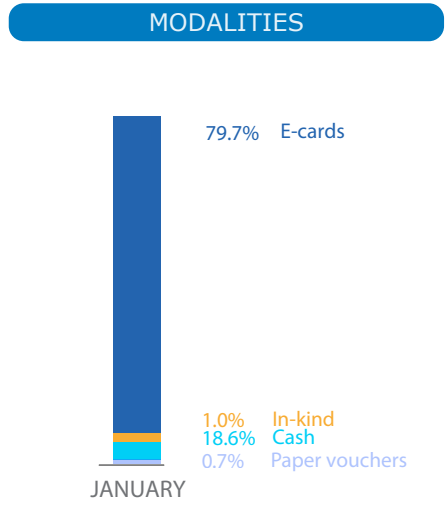


## BENEFICIARIES

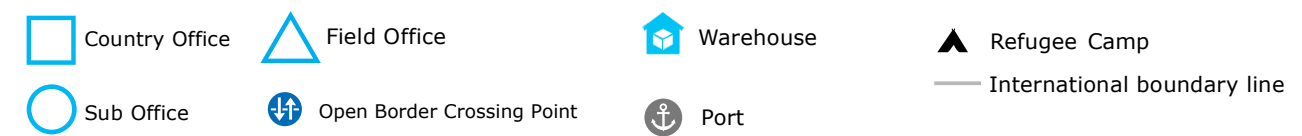
Emergency Operation 200433



\*Excluding livelihoods activities  
 \*\*figures are being reconciled  
 \*\*\* The EMOP ended in December 2016. A regional PRRO started in January 2017



\* Excluding livelihoods activities  
 \*\* Under reconciliation  
 \*\*\* WFP's expansion in host communities initially faced challenges. With the rollout of the ESSN, the number of beneficiaries is expected to grow rapidly.



Sources: OCHA, WFP, GLCSC, UNGIWG, UNHCR, Geonames  
 The designations employed and the presentation of material in the map(s) do not imply the expression of any opinion on the part of WFP concerning the legal or constitutional status of any country, territory, city or sea, or concerning the delimitation of its frontiers or boundaries. ©World Food Programme 2015

This dashboard is based on best available information at the time of production. Future updates may vary as new information becomes available.

**WFP LEVEL 3 EMERGENCY**  
 SINCE 14 DECEMBER 2012

**IASC LEVEL 3 EMERGENCY**  
 SINCE 15 JANUARY 2013

Check the **SITUATION REPORT**  
<https://www.wfp.org/countries/syria>

Jointly produced by the WFP **Operations Centre (OPSCEN)** and the WFP Amman Sub Regional Office for the Syria Crisis.

This dashboard is based on best available information at the time of production. Future updates may vary as new information becomes available.