



World Food Programme



WFP Nigeria Situation Report #6

31 January 2017

In Numbers

1.8 m people displaced, of which 1.3 million in Borno and 0.13 million in Yobe States

(IOM Displacement Tracking Matrix, December 2016)

4.4 m people food insecure in Borno and Yobe States

(Phases 3, 4 & 5 Cadre Harmonisé, October 2016)

Highlights

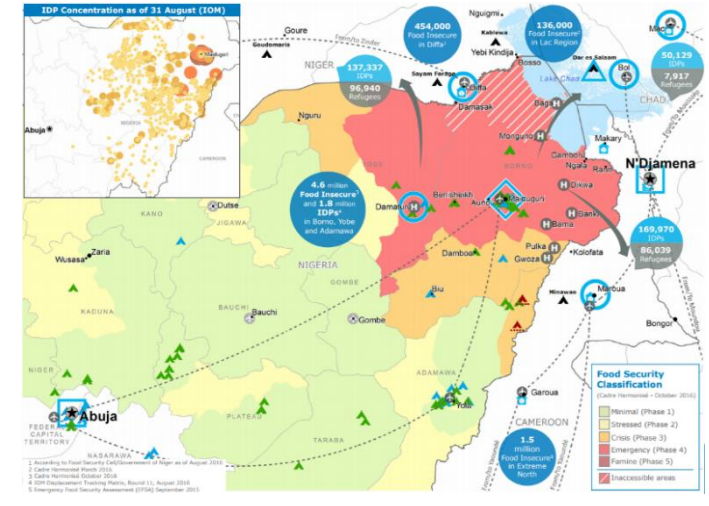
- In January, WFP, both directly and through partnerships, reached 787,400 people with in-kind food distributions, 234,000 children aged 6-59 months with specialized nutritious food and 218,300 beneficiaries through Cash Based Transfers (CBT), reaching overall 1,064,000 people.
- In February, WFP, both directly and through partnerships, plans to reach a total of 1.3 million beneficiaries.

People assisted as of 31 January 2017

- ➔ Cash Based Transfers: **218,300**
- ➔ Supplementary Nutritious Food: **234,000**
- ➔ Food Distributions: **787,400**

Figures are not to be added to avoid double counting.

GENDER MARKER 2A



Situation Update

- The crisis induced by the Boko Haram insurgency remains the main driving factor of instability in north-east Nigeria and has the potential to cause further displacements and increase food insecurity.
- Markets remain disrupted in the affected areas and challenges to reaching people in need remain, due to high levels of insecurity and hence restricted access.
- Because of a significantly below-average harvest (50 percent below the five-year average) the annual lean season is expected to start early in April-May instead of July and given the limited purchasing power and the depletion of household stocks, millions of people are likely to remain severely food insecure until October 2017.

WFP 2017 plan

- WFP has stepped up to meet the immense challenges in northeast Nigeria, and successfully achieved the rapid scale up of food assistance to over one million conflict-affected people in Borno and Yobe States. Both in December 2016 and January 2017 WFP has assisted through cash-based transfers, in-kind food assistance, and specialized nutritious food distributions more than a million Nigerians in conflict-affected zones in the Northeast of the country.
- WFP has adopted an agile response, using the most appropriate and context-specific transfer modalities and delivery mechanisms to address the needs.
- WFP uses either food- or cash-based transfers to support displaced people living in camps or with host communities, as well as vulnerable host populations.
- WFP works with UNICEF, MSF and other partners to provide an integrated food and nutrition programme incorporating water and sanitation, health, and protection assistance, and with FAO to provide recovery assistance for voluntary returnees.
- WFP will scale-up cash transfers where appropriate and where markets are functioning, while the recently increased in-kind food response was temporarily initiated to allow for a rapid scale-up to meet the lifesaving needs.
- Prevention of malnutrition for children aged 6 to 59 months will remain integrated with cash/in-kind assistance, and will be extended to pregnant and nursing women.
- In areas where population returns are possible, a livelihood support intervention will be incorporated to contribute to early recovery and help reduce reliance on food assistance.
- Efforts will continue throughout 2017 and 1.3 million people amongst the most vulnerable are planned to be reached in February while a budget revision is underway to reach even a larger number of beneficiaries.

WFP operations

- As of 31 January, across Borno and Yobe States, 787,400 beneficiaries - most of them internally displaced, in camps or in host communities - benefited from food distributions, and in areas with functioning markets 218,300 people were assisted with cash. Nutritious food has also been distributed to 234,000 children aged 6 to 59 months.
- Delivering in a highly risky and volatile context requires complementary actions to reach all those in need: WFP is increasing its footprint through 18 partnerships with national and international NGOs and through the adoption of an agile response, using the most appropriate and context-specific transfer modalities and delivery mechanisms - a combined in-kind and cash transfers response to address the needs.
- Thanks to the extensive use of helicopters and the pooling of logistics and telecommunications resources across the humanitarian community, WFP, in partnership with UNICEF, continues to reach people and children aged 6 to 59 months in remote areas that were previously inaccessible with in-kind and CBT distributions. Rapid Response Mechanisms (RRM) and teams reached in January a total of 287,570 beneficiaries in Dikwa, Ngala and Monguno.
- WFP also meets regularly with ICRC and MSF to coordinate provision of emergency food assistance, while is coordinating with FAO in its support of the upcoming agricultural season.

Cash-Based Transfers

- Over the past 3 months WFP has implemented a 238% increase in the provision of CBT to displaced populations.
- Access capacity related to cash transfer is improving, with more reliance on end-to-end processes, however liquidity challenges have impacted access to beneficiary populations.
- WFP is expanding the number of CBT instruments, increasing the number financial service providers. Plans are underway to introduce SCOPE, WFP's digital beneficiary and transfer management platform. The corporate tool will be able to handle all cash-based interventions from end to end, it will allow a more personalized assistance, and also help curb fraud and enable CBT projects to change course as required.

Resourcing

- Without an immediate and full response to the acute needs within the coming year, the situation may further deteriorate into a chronic crisis that could result in protracted assistance requirements from the humanitarian community. It is therefore essential that sufficient resources are made available to stabilize the food security and nutrition crisis.
- WFP requires USD 163 million until June, over 320 million until the end of 2017.

Supply Chain

- In January, 11,700mt have been dispatched to WFP Food Distribution Points.
- The installation of 5 Mobile Storage Units and 2 pre-fabs on government-provided land in Damaturu has been completed. The recent set up will provide 2000mt of additional storage capacity.
- Transport availability for the scale-up of activities is

being closely monitored, and Mobile Storage Units are being installed in key locations.

Sectors and Common Services

Food Security Sector

- Food Security Sector (FSS) co-ordination has improved through more regular FSS working groups and technical meetings in Abuja, Borno, Adamawa, and Yobe states; and regular production of gap analysis, 4Ws maps, FS Dashboard and FS Bulletins.

Logistics Sector

- The Logistics Sector is responsible for logistics coordination and information management, augmentation of storage capacities in Borno state and coordination of cargo movements. The Logistics Sector is currently supporting 31 humanitarian organisations.

Emergency Telecommunications (ET) Sector

- The ET Sector finalised the installation of a stand-by Communications Centre (COMCEN) at the International Humanitarian Partnership (IHP) camp in Maiduguri.
- The ETS is actively seeking funds to successfully implement its project in North-East Nigeria.

UN Humanitarian Air Service

- UN Humanitarian Air Service helicopters were instrumental in the emergency medical evacuation that followed the military airstrike on Rann on 17 January.
- UNHAS airlifted 967 kg of medical cargo to Rann, ferried medical teams to the ground and successfully evacuated 66 casualties from Rann to Maiduguri over a total of 13 missions.
- Since commencement of operations (17 August 2015), as of 22 January 2017, UNHAS fixed wing fleet has transported a total on 13,923 passengers and 4,5297kg of cargo; a further 4,409 passengers and 2,990kg of cargo have been transported on UNHAS helicopters throughout the north-east.

WFP Nigeria Resourcing Situation

Project	Requirements in 2017	6-month net funding requirements*	Shortfall (percent)*
EMOP 200777 (Jan 2015-Dec 2017)	USD 352 million	USD 163 million	78%
SO 200834 (Aug 2015-Dec 2017)	USD 19 million	USD 11 million	19%
SO 201032 (Nov 2016-Dec 2017)	USD 9 million	USD 2.3 million	53%

* January - June 2017.

Donors

United Kingdom, United States of America, European Commission, UN CERF, Germany, Norway, Canada, Australia, Ireland, Sweden, Belgium and Private Donors.

Contacts

Margot van der Velden, Country Director (ad int.)

Chiara Argenti, Information Management Officer
chiara.argenti@wfp.org

Mishisalla Beyene, Information Management Officer
mishisalla.beyene@wfp.org