



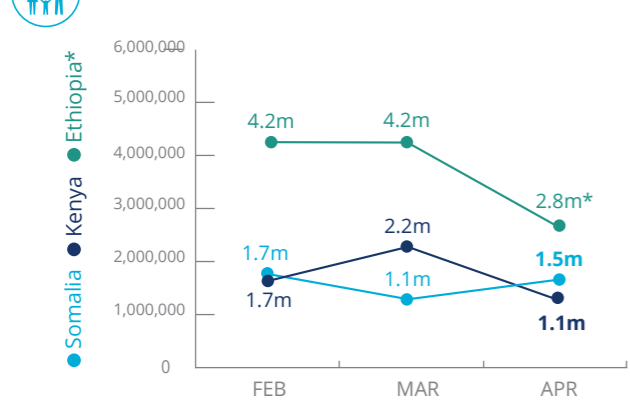
World Food Programme

Emergency Dashboard | May 2018

SAVING LIVES
CHANGING LIVES

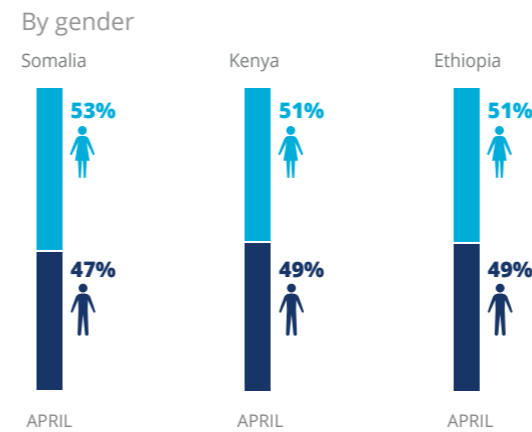
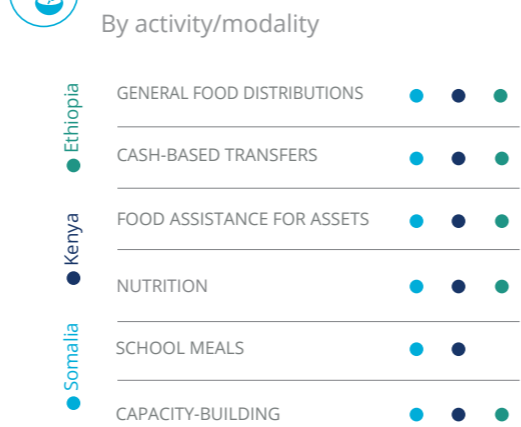
Horn of Africa

PEOPLE ASSISTED



* Estimated figures as distributions are ongoing and/or reports are being consolidated. Excludes an estimated 173,000 children under 5 and Pregnant and Lactating Women receiving nutrition support that overlap with the relief caseload in the Somali Region.

OPERATIONAL PROFILE



FUNDING

SOMALIA
Net funding requirement

US\$120m
May - October 2018

ETHIOPIA
Net funding requirement

US\$110m*
May - October 2018

KENYA
Net funding requirements

US\$29.6m
May - October 2018

Note: Includes all Protracted Relief & Recovery Operations, Country Programme and Special Operations for the drought response across Ethiopia, Kenya and Somalia.

SOURCE: WFP, 30 MAY 2018

*Includes WFP Relief, PSNP, Nutrition and Refugee requirements.

2018 HUMANITARIAN RESPONSE PLANS AND CLUSTER REQUIREMENTS

SOMALIA Humanitarian Response Plan 2018

FOOD SECURITY US\$ 632m
NUTRITION US\$ 254m
LOGISTICS US\$ 10m
OTHERS US\$ 540m



SOURCE: OCHA FTS, 28 MAY 2018

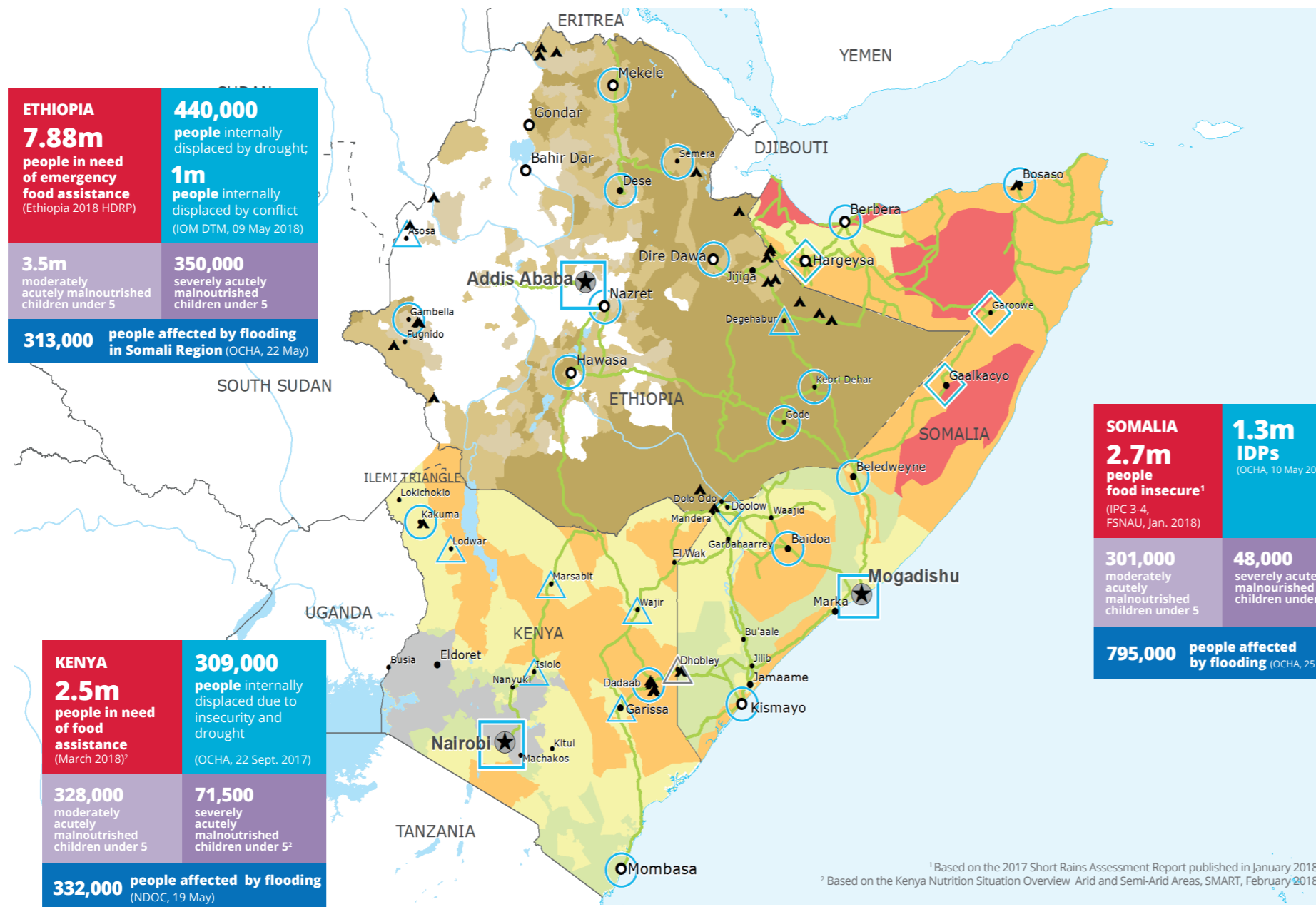
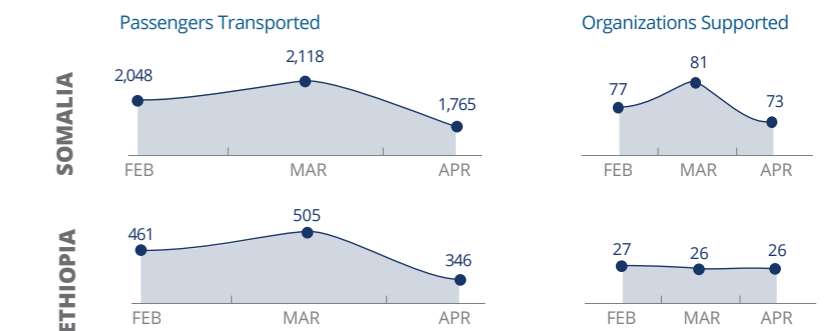
ETHIOPIA Humanitarian Requirements Document 2018

FOOD SECURITY US\$ 1,036m
NUTRITION US\$ 198m
OTHERS US\$ 424m



SOURCE: OCHA, 17 MAY 2018

UN Humanitarian Air Service (UNHAS)



¹ Based on the 2017 Short Rains Assessment Report published in January 2018
² Based on the Kenya Nutrition Situation Overview Arid and Semi-Arid Areas, SMART, February 2018

Hotspot Priority Woredas* (January 2018)

- Priority 1
- Priority 2
- Priority 3

IPC Classification**

- No data
- Minimal (Phase 1)
- Stressed (Phase 2)
- Crisis (Phase 3)
- Emergency (Phase 4)
- Famine (Phase 5)

Map Symbols:

- Country Office
- Area Office
- Sub Office
- Field Office
- Presence Office
- Refugee Camp
- Road Supply Route
- International Boundary
- Undetermined Boundary
- National Capital
- Major Town
- Intermediate Town
- Small Town

Sources: WFP, UNGI/WG, GAUL, GLCSC, OCHA, UNHCR.

The designations employed and the presentation of material in the map(s) do not imply the expression of any opinion on the part of WFP concerning the legal or constitutional status of any country, territory, city or sea, or concerning the delimitation of its frontiers or boundaries. © World Food Programme 2018.

*The Hotspot Woredas only refer to Ethiopia
 **For Somalia: Most likely scenario February - June 2018
 For Kenya: February - April 2018

WFP LEVEL 2 EMERGENCY
SINCE 06 FEBRUARY 2017

For more information, see the SITUATION REPORT and COUNTRY BRIEF
www.wfp.org

<http://documents.wfp.org/stellent/groups/public/documents/ep/WFP284303.pdf>

Produced by the WFP Operations Centre (OPSCEN) jointly with Country Office and Regional Bureau Nairobi.
This dashboard is based on best available information at the time of production. Future updates may vary as new information becomes available.