

# Strategic Evaluation on Resilience

WFP's Approaches to Building  
Resilience Capacities –  
Examples from the Field

Executive Board Side Event  
February 2021





Global Network  
Against Food Crises

Integrated  
actions for  
lasting solutions

# The Next Generation of Resilience Work for Food and Nutrition Security

***Mark A. Constas***

Applied Economics & Management  
Cornell University



***Presentation to the Executive Board of the World Food Programme  
February 24, 2021***



# Three Questions

- 1. To what problem is resilience a solution?**
- 2. What has been achieved in resilience work?**
- 3. What are the opportunities moving forward?**

# To what problem is resilience a solution?

Reality of vulnerable populations living in shock-prone contexts

## Droughts



## Floods



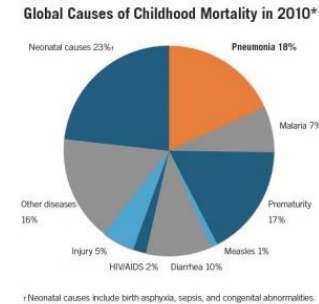
## Pests



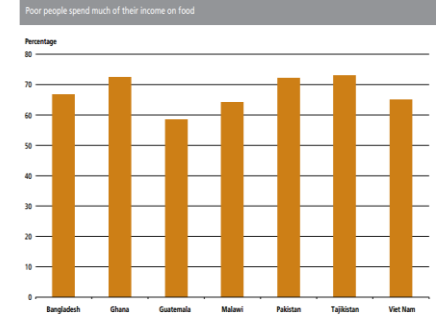
## Political Conflicts



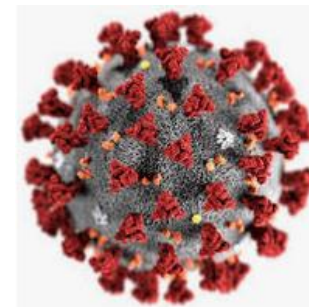
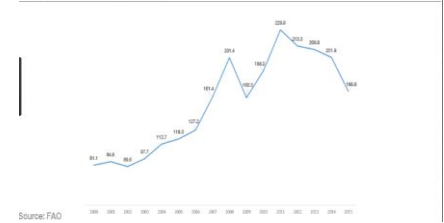
## Health



## Food Prices



This is how food prices have changed  
Food Price Index, 2000-2015



Climate Change and Global Drivers of Food Insecurity



Individual and combined effect of shocks and stressors

# Uptake of Resilience

## Definition, Resilience Capacities & Application

### Definition

- Resilience is the “the capacity to ensure that shocks and stressors do not have long-lasting adverse development consequences”

### Focus on capacities

- Absorptive capacity
- Adaptive capacity
- Transformative capacity

### Applications

#### Resilience-building is a concept that

- Extends across contexts and sectors & address increasingly complex risks and their impacts on vulnerable people.

#### International organizations

- Have embraced resilience as an overarching theme to identify programmes and approaches that help mitigate the impact of shocks and stressors.





# What has been achieved?

## FSIN's Resilience Measurement Technical Working Group

### Seven Guidance Documents on Resilience Measurement

Theory

Framework

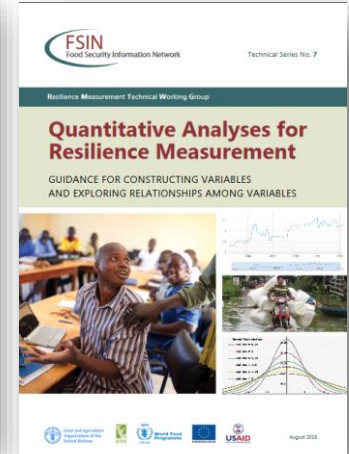
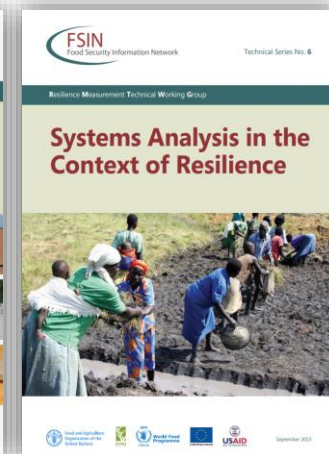
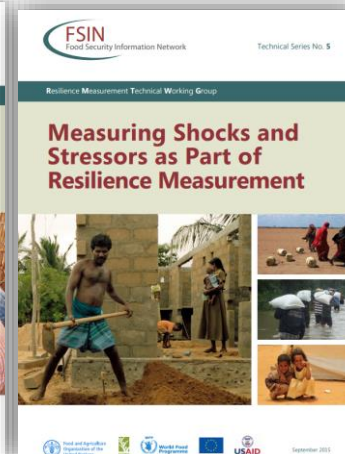
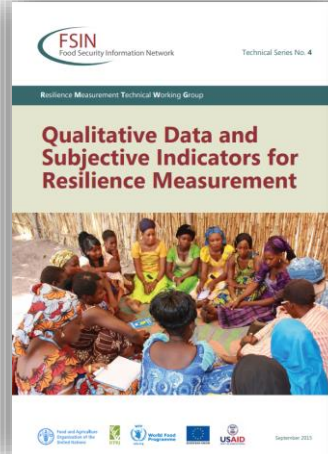
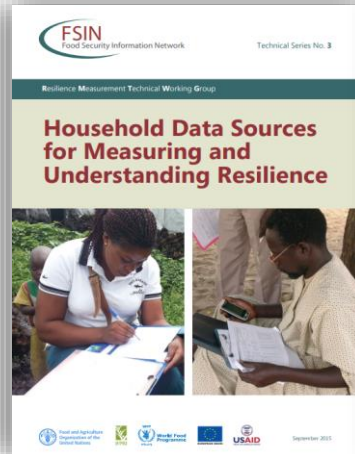
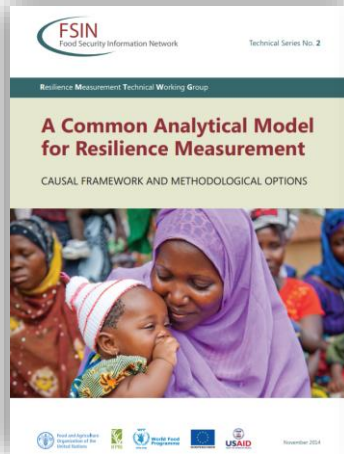
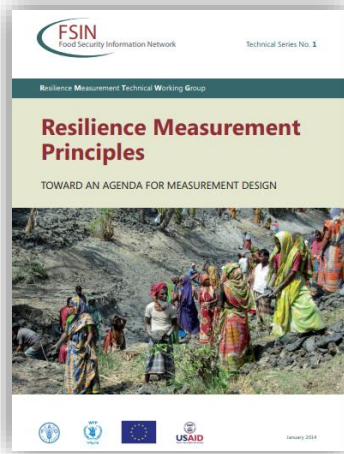
Data sources

Contexts

Shocks-focus

Systems

Analysis



Technical Knowledge Base for Resilience Measurement

# Moving Forward with Resilience

## Inflection Point & Opportunities

### Inflection point

- Shock intensity/complexity
- Convergence on resilience
- Next generation strategic planning



### Four opportunities

1. Shocks and transmission effects
2. Fragile states and fragility
3. Food system resilience
4. Evidence for decision-making

## Broader Context of Drivers and Opportunities



**SUSTAINABLE DEVELOPMENT GOALS**



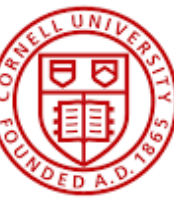
**Food Systems Summit 2021**



**Strategic planning**

Global priorities and CSPs

Thank you







# WFP Somalia

## WFP's different models for building resilience

Ms Ana Fernandez Martínez, 2021 February



World Food Programme

SAVING  
LIVES  
CHANGING  
LIVES

# WFP approach to resilience in Somalia



Widespread  
flooding



Extreme dry weather  
conditions



Worst desert locust  
outbreak in over 25 years

---

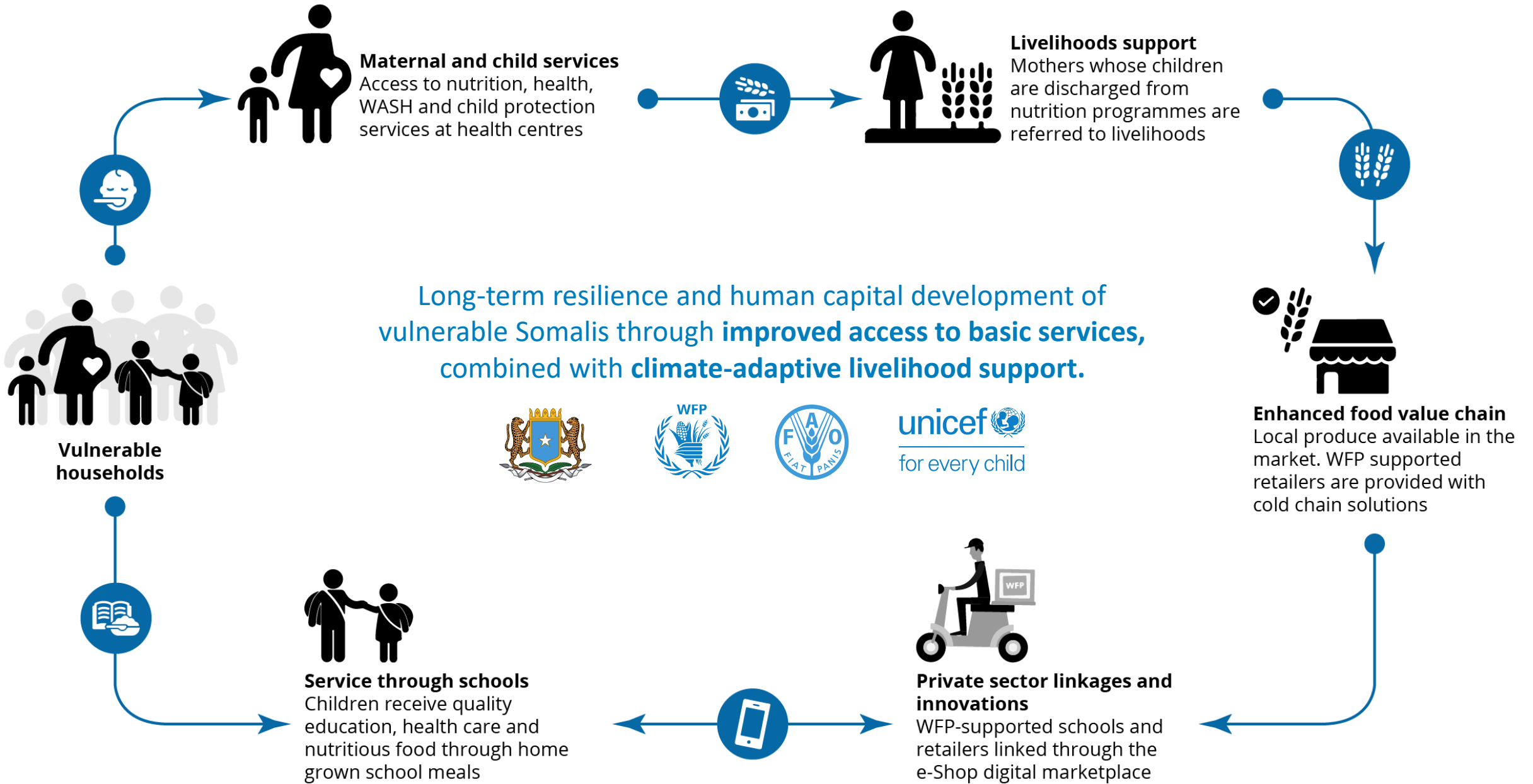
In Somalia – a girl has a high likelihood of being **malnourished, micro-nutrient deficient**, and of **dropping out of school** at an early age to get married.

**Good nutrition and quality education** are essential to ensure vulnerable individuals can withstand shocks and stressors.

Well-nourished and educated individuals will be **healthier, stronger, and will have better coping strategies** to adapt to the environment,

WFP supports resilience and human capital development through **improved access to basic services**, combined with **climate-adaptive livelihood support**.



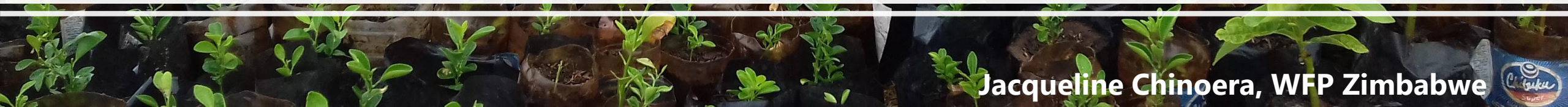


Thank you





## Building Resilience in Zimbabwe - Food Assistance for Assets Plus



Jacqueline Chinoera, WFP Zimbabwe



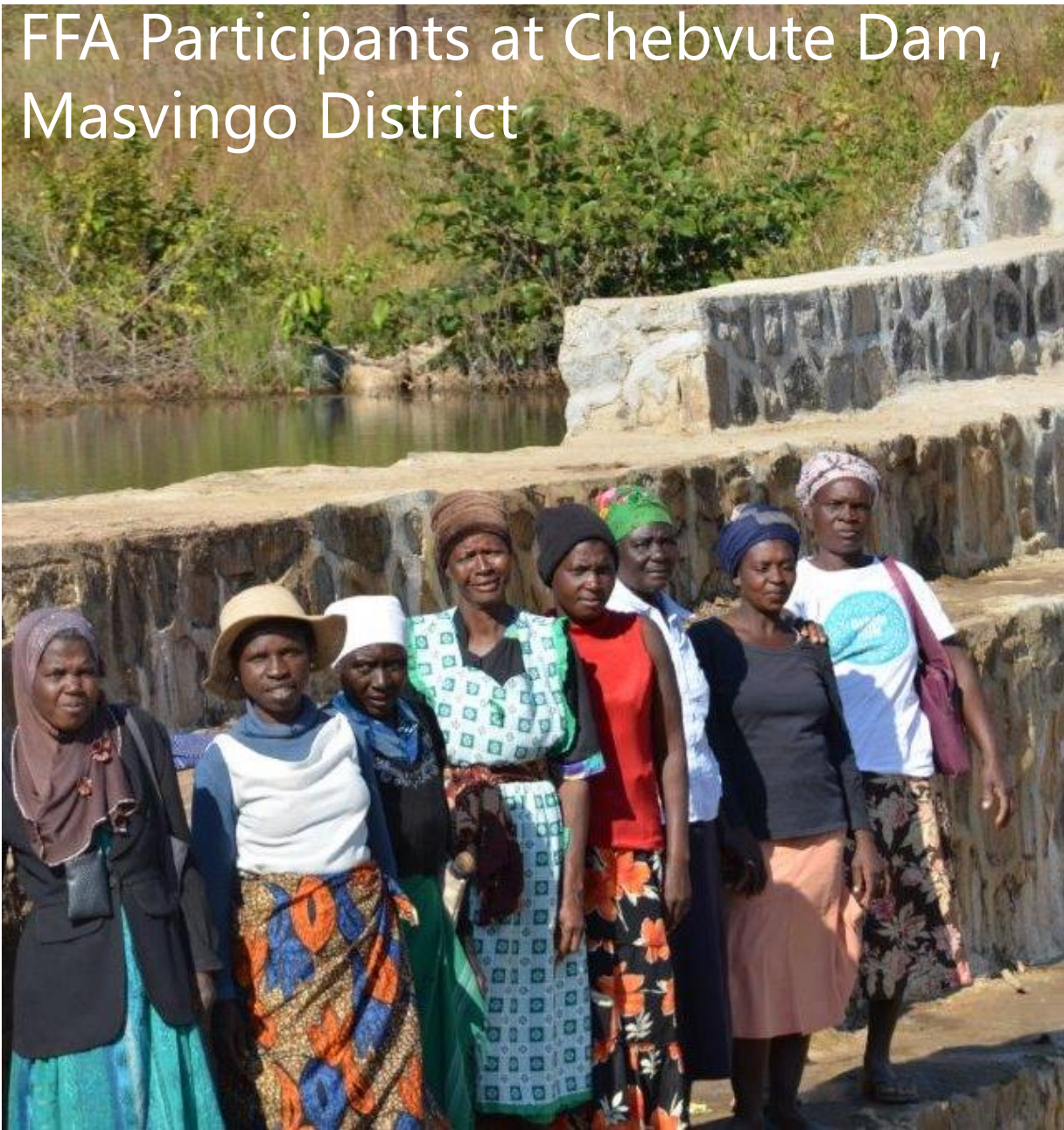


FFA participants irrigating their plots

FFA participants collecting stones used to build dam walls



FFA Participants at Chebvute Dam, Masvingo District







FFA participants making vegetable and fruit solar driers





Thank you , Siyabonga , Tatenda 😊





World Food Programme

SAVING LIVES

CHANGING LIVES

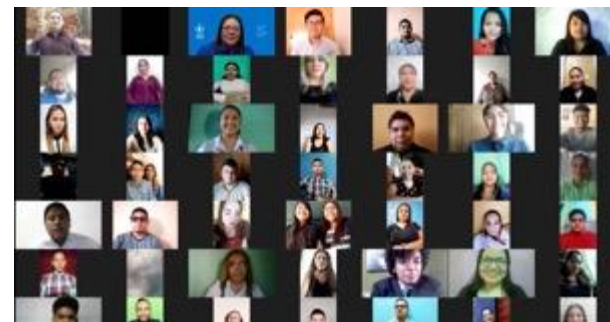
# Promoting Food Security and Social Transformation Through Gastronomy

WFP El Salvador, Elia Martínez





## An innovative model of the Triple Nexus (Humanitarian Action, Development and Peace Building)





**Combining educational trainings, internships and cash transfers, WFP El Salvador is transforming the lives of youth**





World Food Programme

# Thank you



SAVING LIVES CHANGING LIVES

# Integrated Resilience Programme WFP Niger

Ms Raffaella Policastro





# Integrated resilience approach

Integrated, multisectoral, multi-actor approach for building resilience, through multi-year investments focused on:

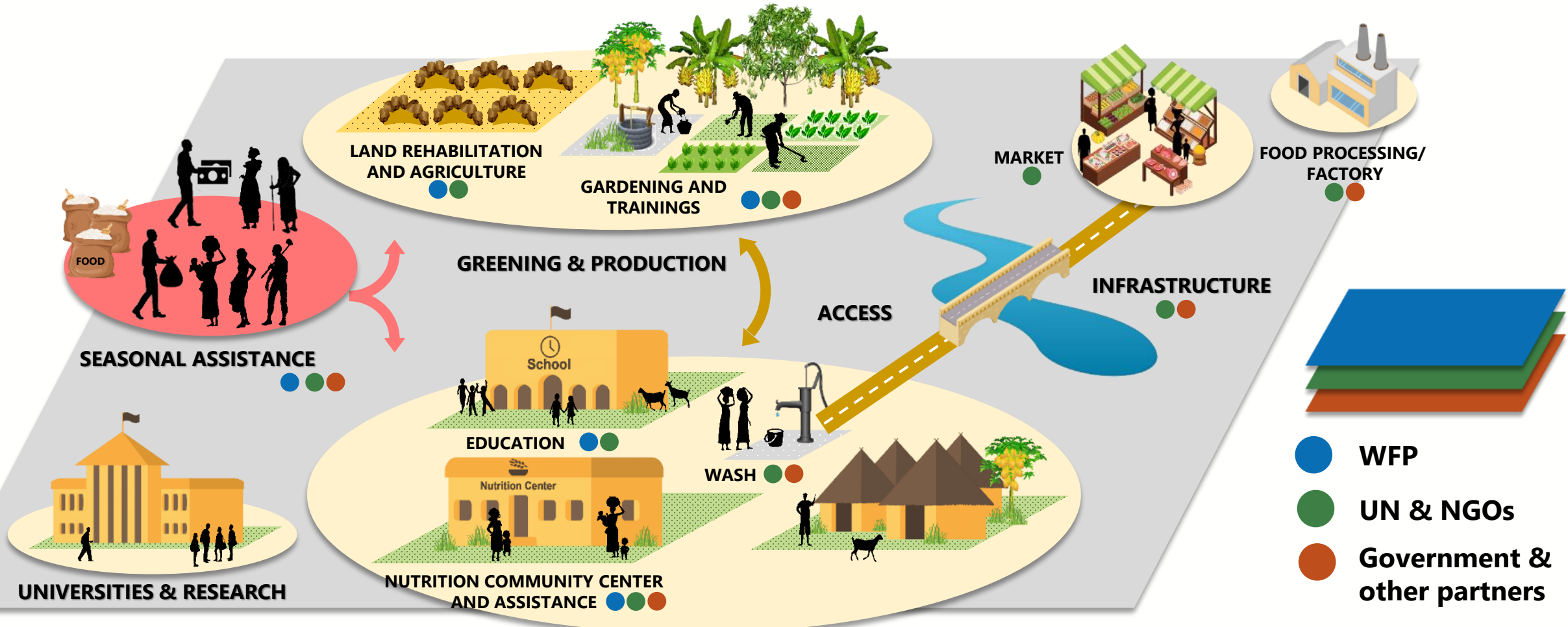
- A. **Participatory planning with communities**
- B. **Integrated intervention package**
- C. **Partnerships & complementarities “in action”**
- D. **Capacity strengthening at all levels**

## Key elements:

- Alignment with Government Priorities / *Communes de Convergence*
- Integration of activities through geographic concentration for greater impact
- Targeting of the same communities over five years - accompanied by a “progression” strategy



# "4 C": Convergence, Concentration, Coverage, Capacities











<https://sway.office.com/mKZoGox4Lu0V3xea>

**THANKS!**



World Food Programme

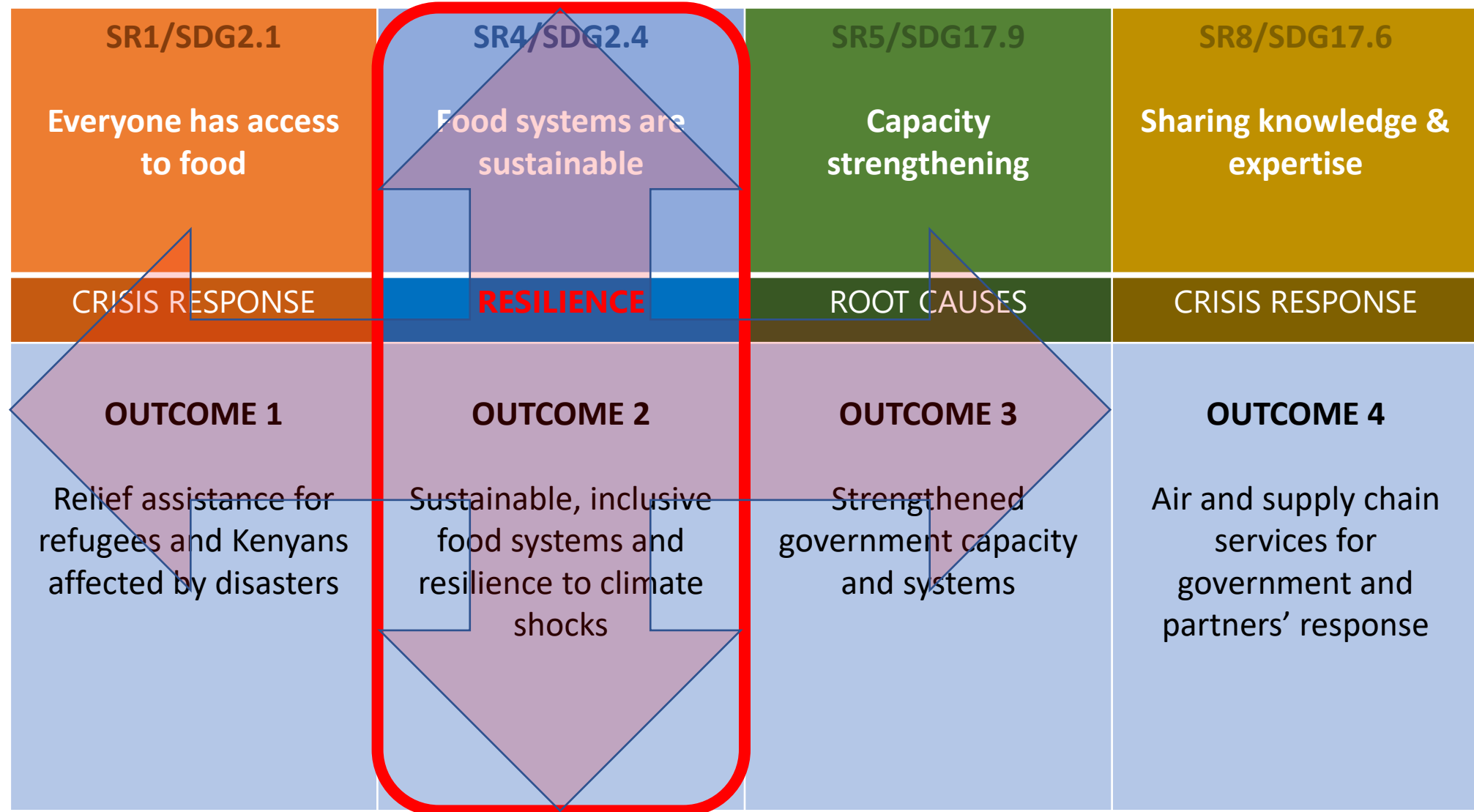
SAVING  
LIVES  
CHANGING  
LIVES



## WFP Kenya's approach to Resilience

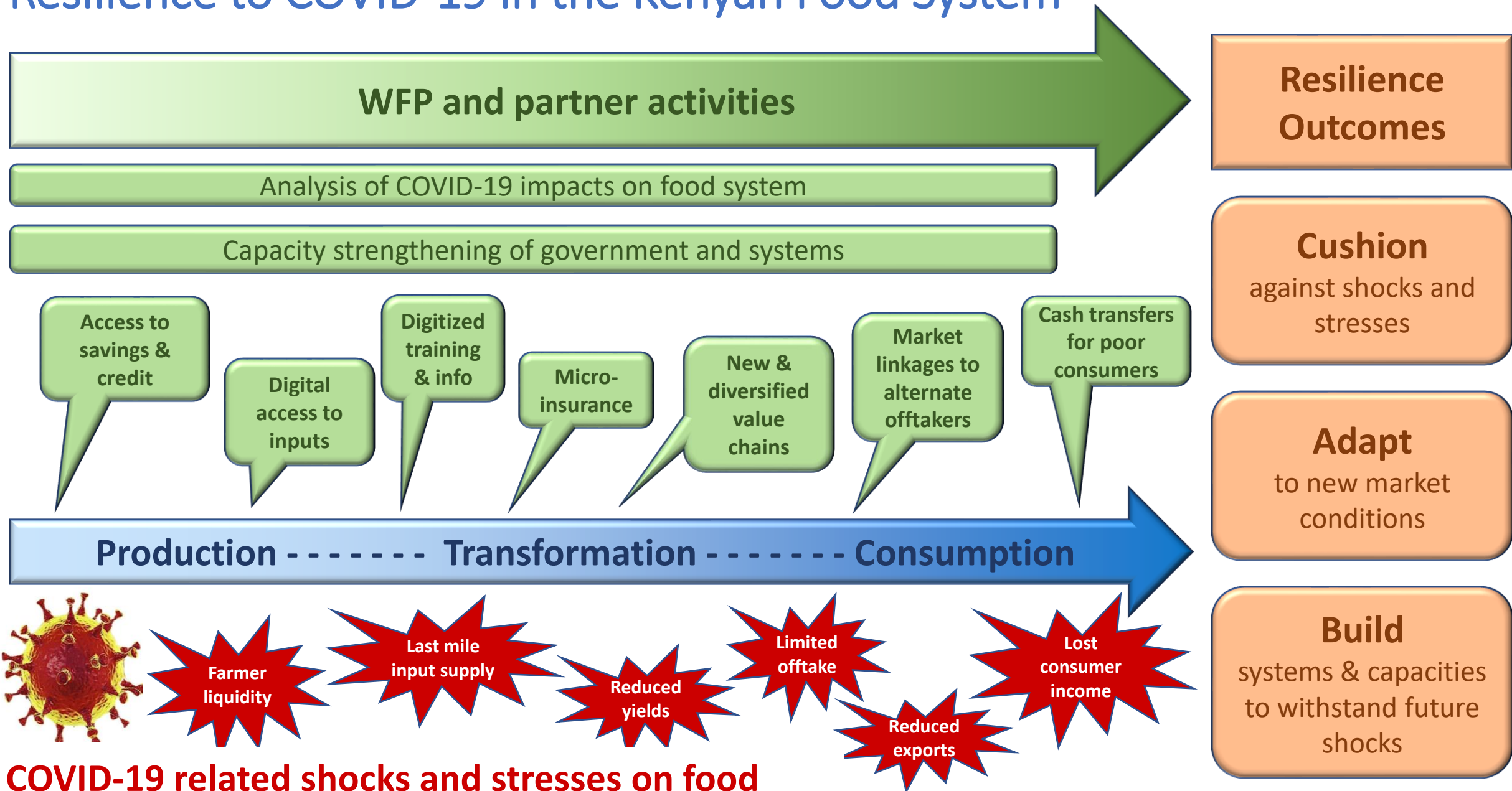
Shaun Hughes  
WFP Executive Board side event  
February 2021

# Resilience within the Kenya Country Strategic Plan (2018-2023)





# Resilience to COVID-19 in the Kenyan Food System



**COVID-19 related shocks and stresses on food system**

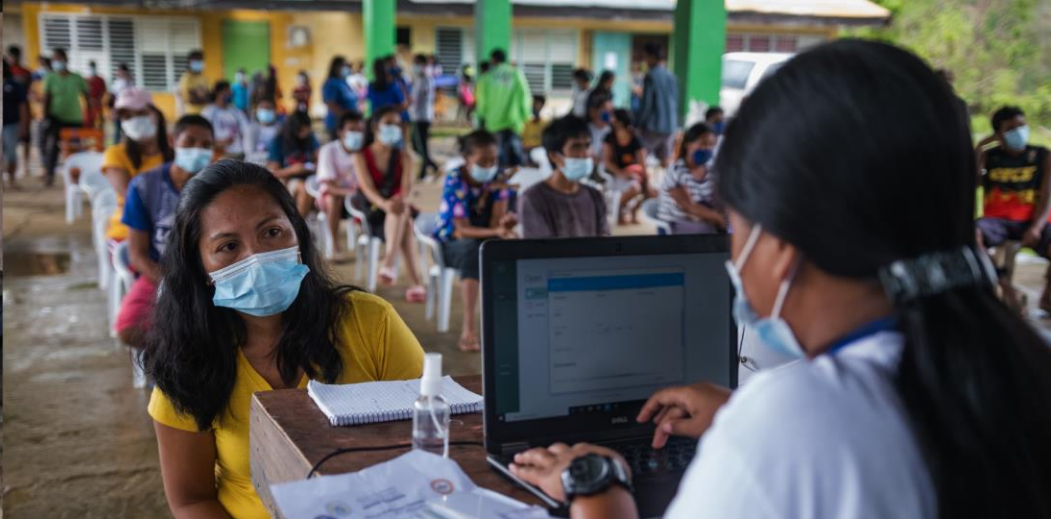


# THANKS!



World Food Programme

SAVING  
LIVES  
CHANGING  
LIVES



# WFP's Approach to Resilience

Mishael Argonza  
Head of Cotabato Sub-Office, Philippines  
WFP Executive Board Side Event

February 2021

# Resilience-building Model: WFP's Support to the Government's Social Protection Programmes

Philippines is a middle-income country (GNI Per capita USD 3,850 in 2019, World Bank)



WFP **supports** the national and local government to **reduce vulnerabilities** to shocks.

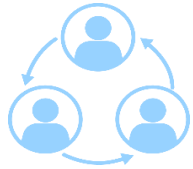


WFP **supports the national social protection systems** through country capacity strengthening and providing technical solutions to the government.

# Resilience-building Model: WFP's Support to the Government's Social Protection Programmes



Inform the improvement of their programme design or support policy decision



Digital solution for national social protection program - beneficiary management (SCOPE)



Support Post-Distribution Monitoring/ Real-time impact monitoring for the government



Vulnerability analysis and mapping of beneficiaries





World Food Programme



SAVING  
LIVES  
CHANGING  
LIVES

**Thank You!**