



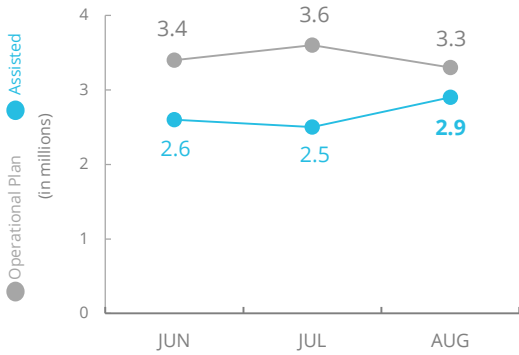
World Food Programme

# South Sudan



## PEOPLE ASSISTED

South Sudan Interim Country Strategic Plan (ICSP)

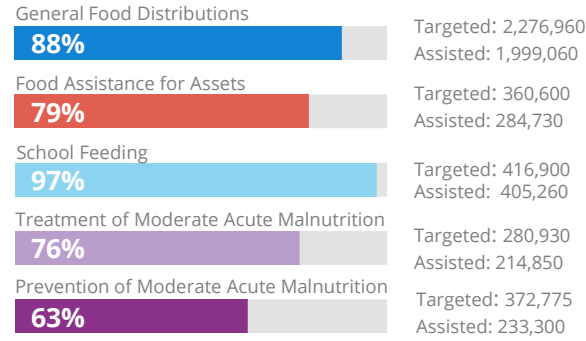


SOURCE: WFP, 30 SEP 2019



## OPERATIONAL PROFILE

By Activity (August)



## FUNDING

South Sudan Interim Country Strategic Plan (ICSP)

October 2019 - March 2020

# us\$527.1m

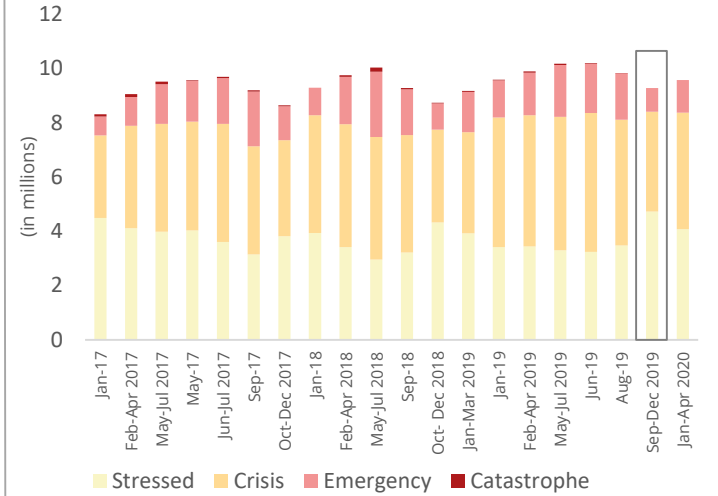
Net funding requirements

2019 LEVEL 3 RESPONSE  
Requirements: US\$959.9m  
Funded: US\$714.5m

74%

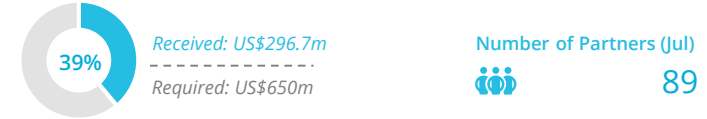
SOURCE: WFP, 27 SEP 2019

## FOOD INSECURITY (IPC) TRENDS

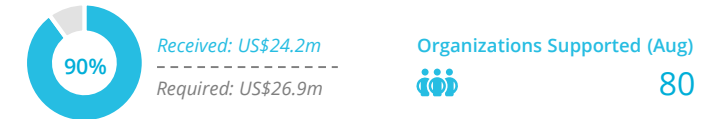


## WFP-LED AND SUPPORTED CLUSTERS

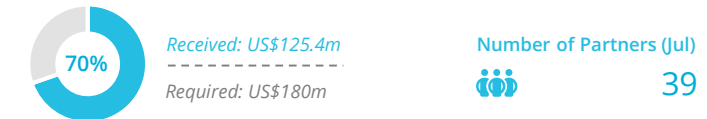
### FOOD SECURITY AND LIVELIHOODS CLUSTER



### LOGISTICS CLUSTER

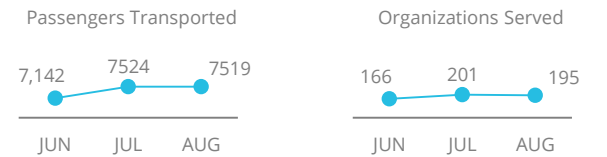


### NUTRITION CLUSTER



SOURCE: OCHA FTS, 24 SEP 2019

## UN HUMANITARIAN AIR SERVICES (UNHAS)



SOURCE: WFP, 26 SEP 2019

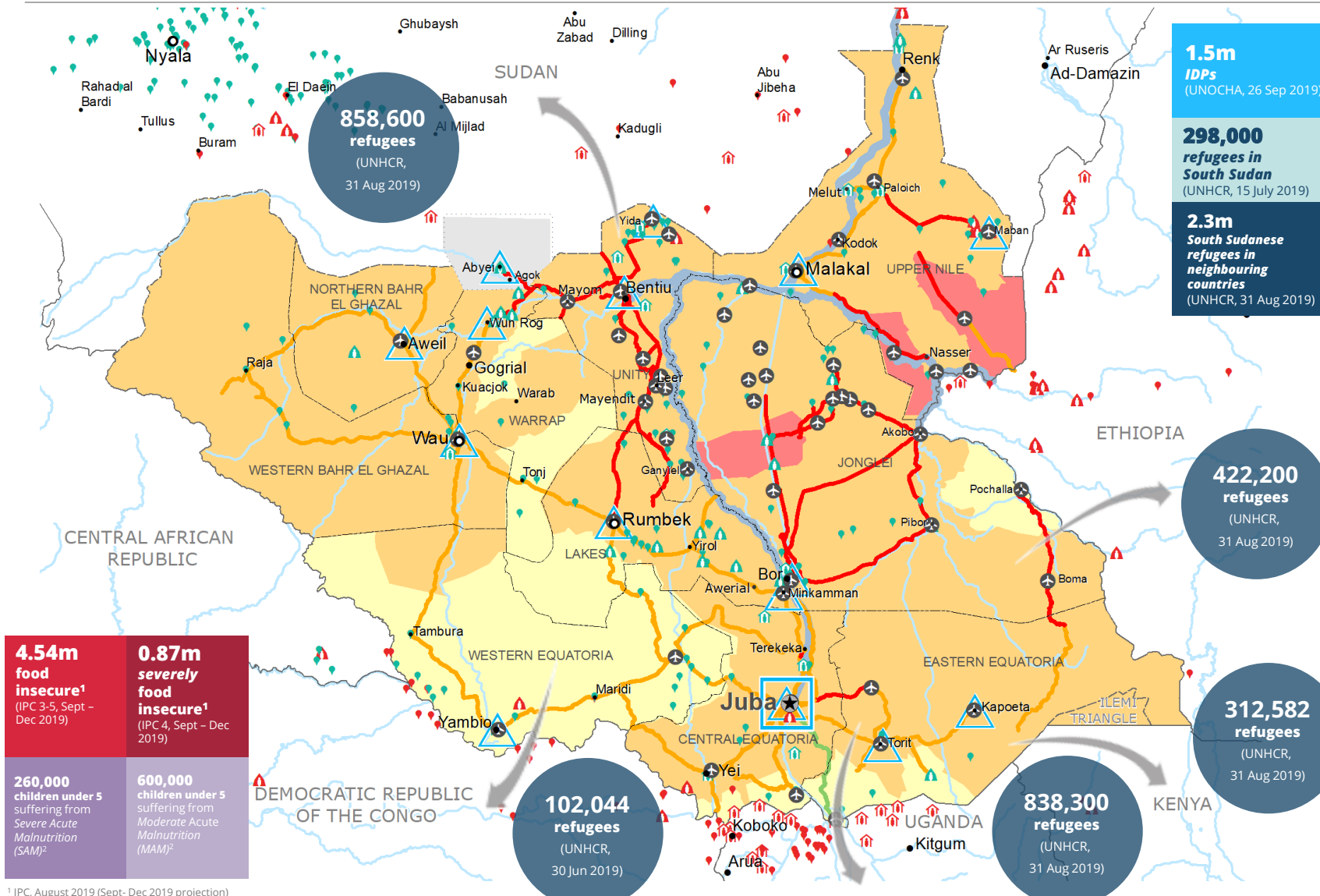
## WFP LEVEL 3 EMERGENCY

SINCE 23 December 2013

For more information, see the SITUATION REPORT and COUNTRY BRIEF  
[www.wfp.org/countries/south-sudan](http://www.wfp.org/countries/south-sudan)

South Sudan Interim Country Strategic Plan  
<http://documents.wfp.org/stellent/groups/public/documents/ep/wfp1284303.pdf>

Produced by the WFP Operations Centre (OPSCEN) jointly with Country Office and Regional Bureau Nairobi. This dashboard is based on best available information at the time of production. Future updates may vary as new information becomes available.



**4.54m food insecure<sup>1</sup>**  
(IPC 3-5, Sept - Dec 2019)

**0.87m severely food insecure<sup>1</sup>**  
(IPC 4, Sept - Dec 2019)

**260,000 children under 5** suffering from Severe Acute Malnutrition (SAM)<sup>2</sup>

**600,000 children under 5** suffering from Moderate Acute Malnutrition (MAM)<sup>2</sup>

<sup>1</sup> IPC, August 2019 (Sept- Dec 2019 projection)  
<sup>2</sup> 2019 Humanitarian Response Plan, UNOCHA

**IPC Food Security Classification**  
September - December 2019 Projection

- No data
- Minimal (Phase 1)
- Stressed (Phase 2)
- Crisis (Phase 3)
- Emergency (Phase 4)
- Famine (Phase 5)

**Country Office** (Blue square)  
**Sub Office** (Blue circle)  
**Field Office** (Blue triangle)

**Road Closed** (Red line)  
**Road Open** (Green line)  
**Road with restricted access** (Yellow line)

**UNHAS Connection** (Star icon)

**IDP Camp** (Green house icon)  
**IDP Center** (Green house icon with star)  
**IDP Location** (Green house icon with dot)

**Refugee Camp** (Red house icon)  
**Refugee Center** (Red house icon with star)  
**Refugee Location** (Red house icon with dot)

**National Capital** (Star icon)  
**Major Town** (Black circle)  
**Intermediate Town** (Black dot)  
**Small town** (Black dot)

**International Boundary** (Black line)  
**Province boundary** (Grey line)  
**River** (Blue line)

Sources: WFP, UNGIWG, GAUL, GLCSC, OCHA, UNHCR. Access Constraints Map, 20 September 2019.

The designations employed and the presentation of material in the map(s) do not imply the expression of any opinion on the part of WFP concerning the legal or constitutional status of any country, territory, city or sea, or concerning the delimitation of its frontiers or boundaries. © World Food Programme 2019.