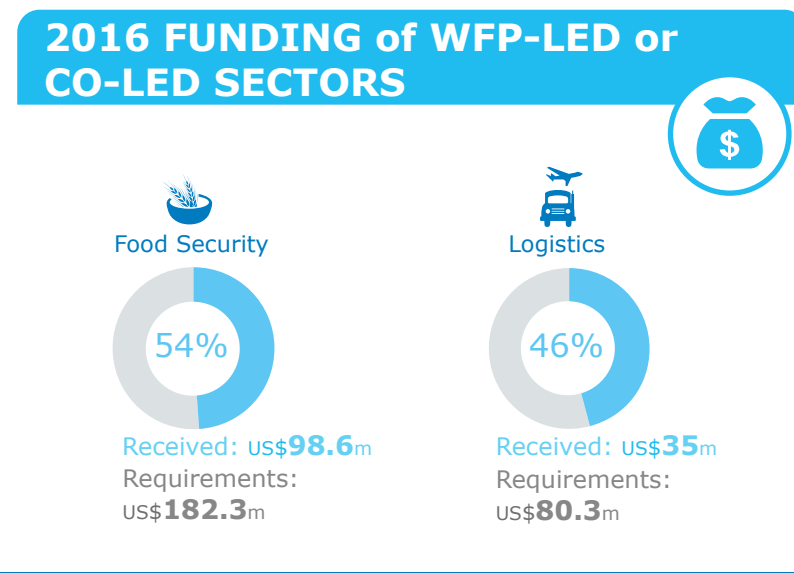
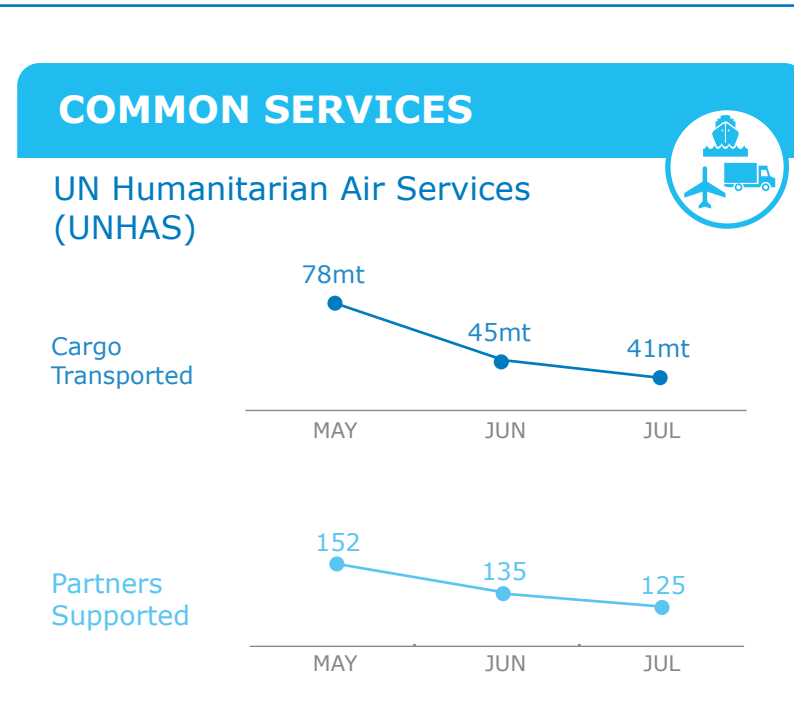
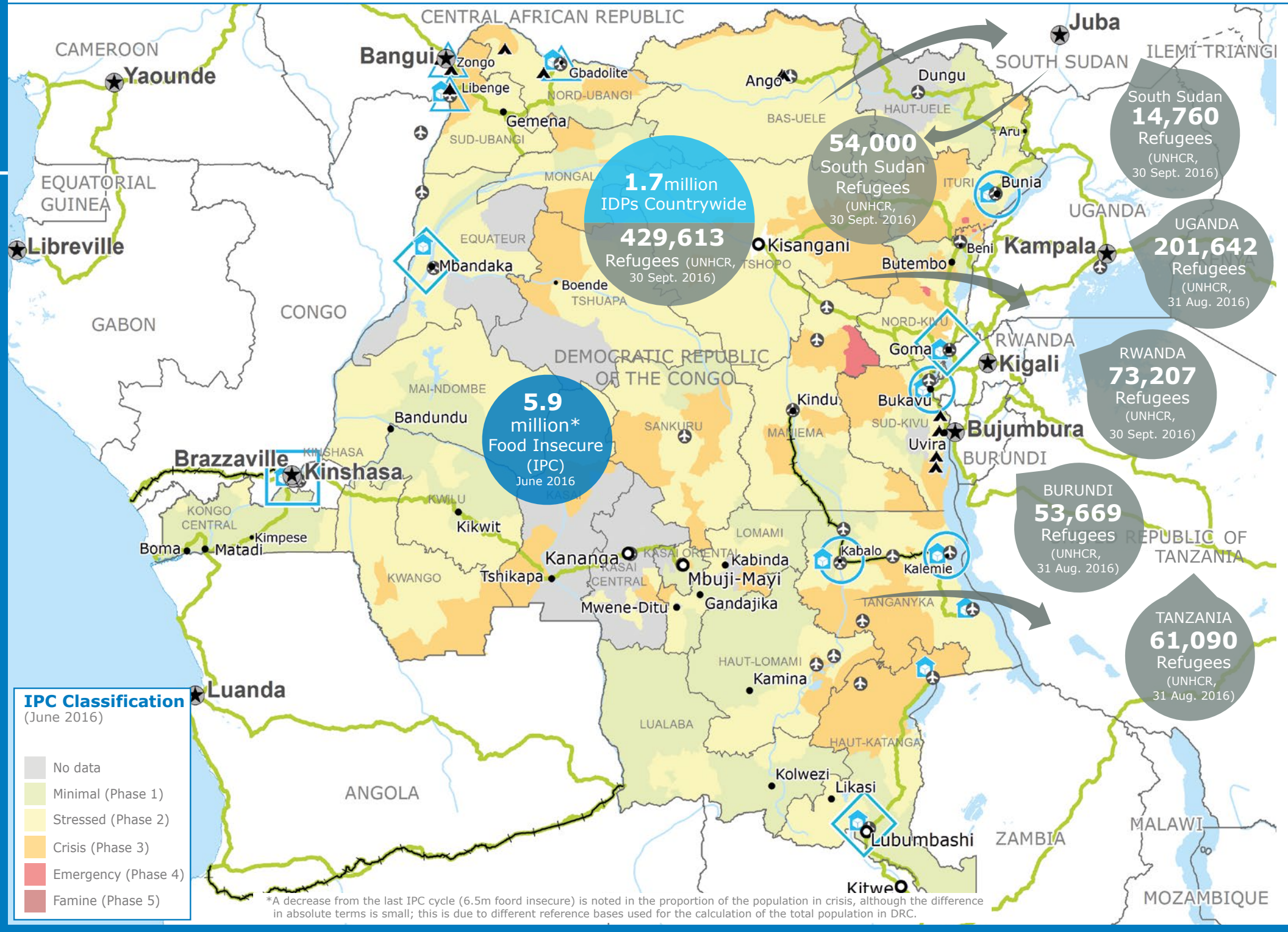


### OPERATIONAL CHALLENGES

- Insecurity
- Humanitarian Access
- Resources



**WFP LEVEL 2 EMERGENCY**  
SINCE 12 DECEMBER 2013

For more information, see the **SITUATION REPORT** and **COUNTRY BRIEF** [www.wfp.org/countries/congo-democratic-republic](http://www.wfp.org/countries/congo-democratic-republic)

**2A PRRO 200832**  
<http://documents.wfp.org/stellent/groups/public/documents/ep/WFP284303.pdf>

Sources: WFP, UNGIWG, GAUL, GLSCS, OCHA, UNHCR, IPC

The designations employed and the presentation of material in the map(s) do not imply the expression of any opinion on the part of WFP concerning the legal or constitutional status of any country, territory, city or sea, or concerning the delimitation of its frontiers or boundaries.

© World Food Programme 2016

- Country Office
- Field Office
- UNHAS Connection
- National Capital
- International Boundary
- Area Office
- Warehouse
- Province boundary
- Sub Office
- Refugee Camp
- Road Supply Route
- Major Town
- River
- Intermediate Town
- Small town
- Surface Waterbody

Produced by the WFP **Operations Centre (OPSCEN)** jointly with Country Office and Regional Bureau Johannesburg

This dashboard is based on best available information at the time of production. Future updates may vary as new information becomes available.