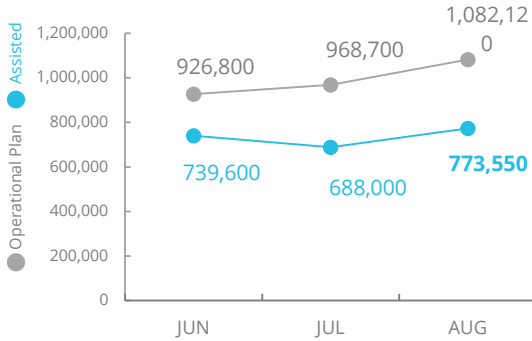


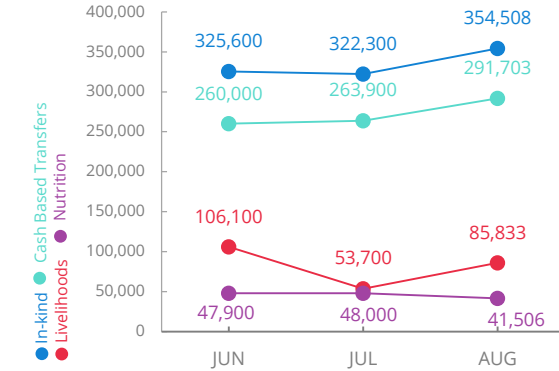
# Nigeria

## PEOPLE ASSISTED In Borno, Yobe and Adamawa States



SOURCE: WFP, 30 SEP 2019

## OPERATIONAL PROFILE By Activity



## FUNDING Nigeria Country Strategic Plan (CSP)

October 2019 – March 2020  
Net funding requirements

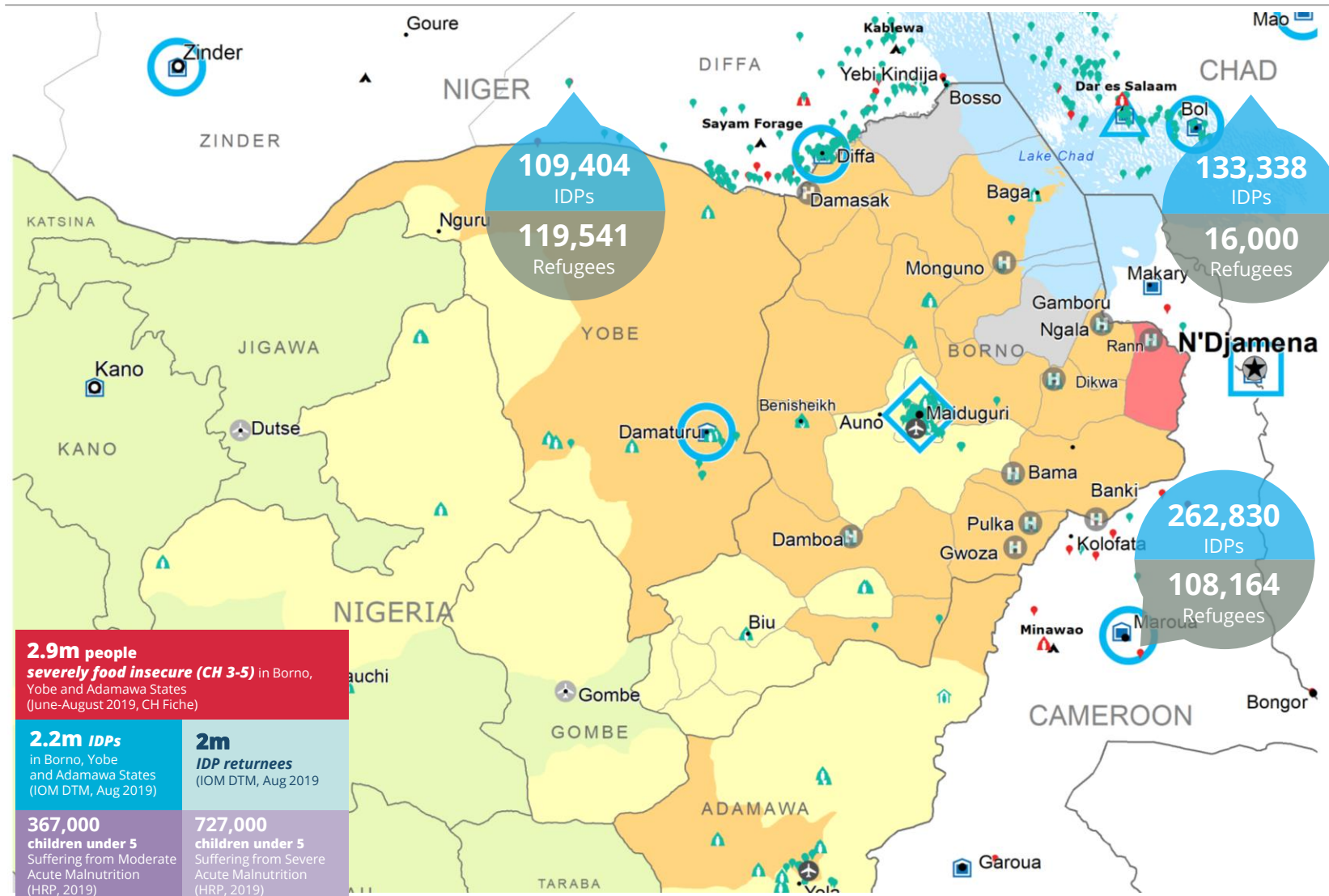
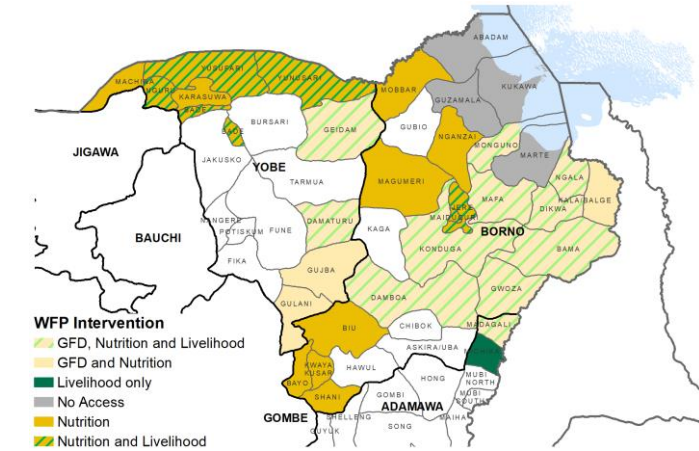
**us\$71m**

2019 LEVEL 3 RESPONSE  
Requirements: USD 242.7m  
Contributions: USD 201.8m

**83%**

SOURCE: WFP, 25 SEP 2019

## WFP OPERATIONAL PRESENCE IN BORNO, YOBE AND ADAMAWA STATES



**2.9m people severely food insecure (CH 3-5)** in Borno, Yobe and Adamawa States (June-August 2019, CH Fiche)

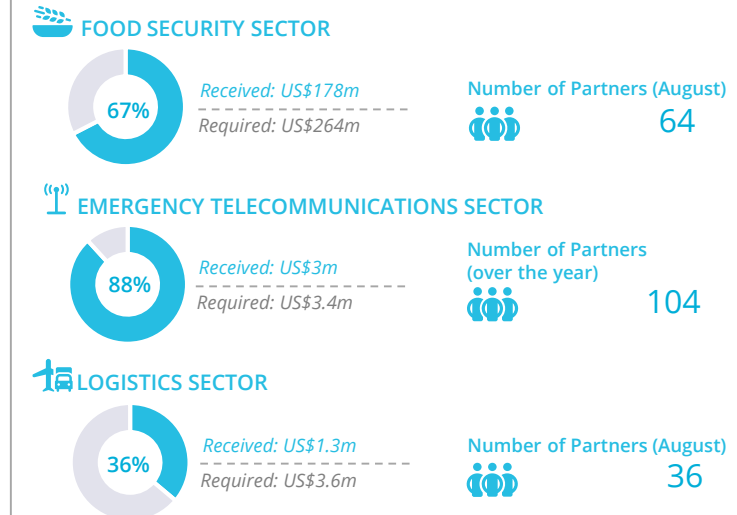
**2.2m IDPs** in Borno, Yobe and Adamawa States (IOM DTM, Aug 2019)

**2m IDP returnees** (IOM DTM, Aug 2019)

**367,000 children under 5** Suffering from Moderate Acute Malnutrition (HRP, 2019)

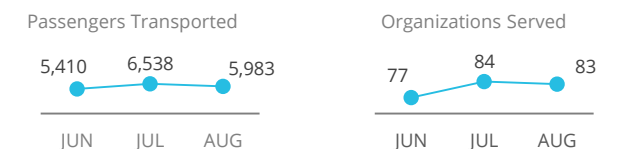
**727,000 children under 5** Suffering from Severe Acute Malnutrition (HRP, 2019)

## WFP-LED AND CO-LED SECTORS



SOURCE: CLUSTERS, 30 SEP 2019

## UN HUMANITARIAN AIR SERVICES (UNHAS)



SOURCE: WFP, 27 AUG 2019

## WFP LEVEL 3 EMERGENCY

SINCE 11 AUGUST 2016

For more information, see the [SITUATION REPORT](#) and [COUNTRY BRIEF](#) <https://www1.wfp.org/countries/nigeria>

Nigeria Country Strategic Plan  
<https://docs.wfp.org/api/documents/WFP-0000101930/download.pdf?ga=2.211211158.2010349590.1584781253.114077222.1558363545>

Produced by the WFP Operations Centre (OPSCEN) jointly with Country Office and Regional Bureau Dakar. This dashboard is based on best available information at the time of production. Future updates may vary as new information becomes available.

- CH Food Security Classification**  
June - August 2019 Projection
- No data
  - Crisis (Phase 3)
  - Minimal (Phase 1)
  - Emergency (Phase 4)
  - Stressed (Phase 2)
  - Famine (Phase 5)
- Country Office**
- Country Office
  - Area Office
  - Sub Office
  - Field Office
- UNHAS Connection**
- UNHAS Connection
  - Ad-Hoc Fixed-Wing Destination
  - Ad-Hoc Rotary-Wing Destination
  - Warehouse
- IDP Camp**
- IDP Camp
  - IDP Center
  - IDP Location
- Refugee Camp**
- Refugee Camp
  - Refugee Center
  - Refugee Location
- National Capital**
- National Capital
  - Major Town
  - Intermediate Town
  - Small town
- International Boundary**
- International Boundary
  - Province boundary
  - River

Sources: WFP, UNGIWG, GAUL, GLCSC, OCHA, UNHCR.

The designations employed and the presentation of material in the map(s) do not imply the expression of any opinion on the part of WFP concerning the legal or constitutional status of any country, territory, city or sea, or concerning the delimitation of its frontiers or boundaries. © World Food Programme 2018.

