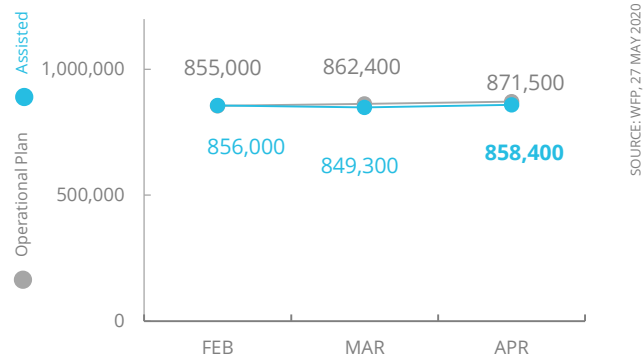


Bangladesh

PEOPLE ASSISTED Bangladesh Rohingya Refugee Response



OPERATIONAL PROFILE (April)

Refugee Communities

General Food Assistance: In-kind / E-Voucher

173,800 / 684,600

Nutrition Refugees TSFP CU5 / PLW*

8,600 / 900

Nutrition Refugees BSFP CU5 / PLW**

156,400 / 21,600

Host Communities

Nutrition Host Communities TSFP CU5 / PLW*

2,700 / 1,700

* Targeted Supplementary Feeding for Children under 5 / Pregnant and Lactating Women

** Blanket Supplementary Feeding for Children under 5 / Pregnant and Lactating Women

SOURCE: WFP, 27 MAY 2020

COVID-19 OPERATIONAL IMPACT

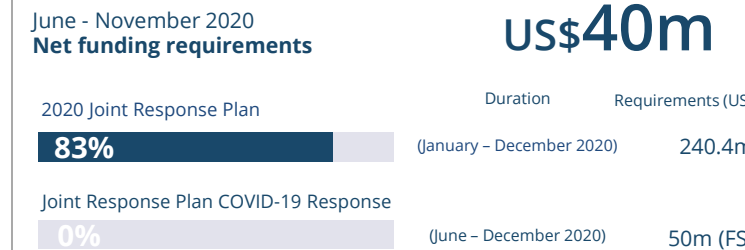
Status	WFP Response	Beneficiaries targeted
✓	COVID-19 emergency support to the Bangladeshi host community in Cox's Bazar	105,000 households*
✓	School Feeding in the Host Community	130,000

✓ Ongoing
 ! Partially Suspended
 ✗ Suspended

* (incl. 24,000 beneficiaries from the Livelihoods programme)

SOURCE: WFP, 02 JUN 2020

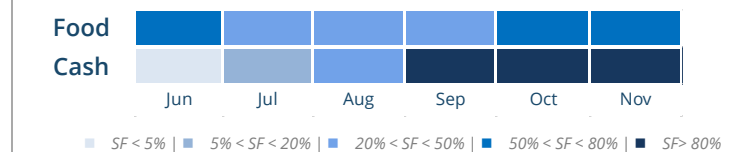
FUNDING Cox's Bazar Level 2 Emergency Response:



AVERAGE MONTHLY FUNDING REQUIREMENTS (US\$)

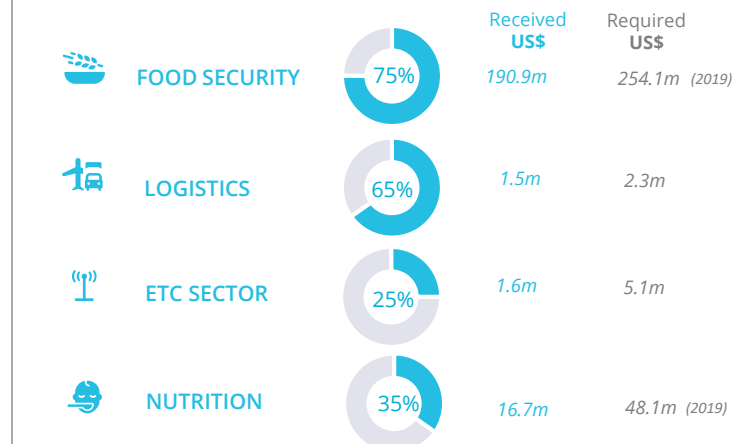


EXPECTED SHORTFALLS (SF)

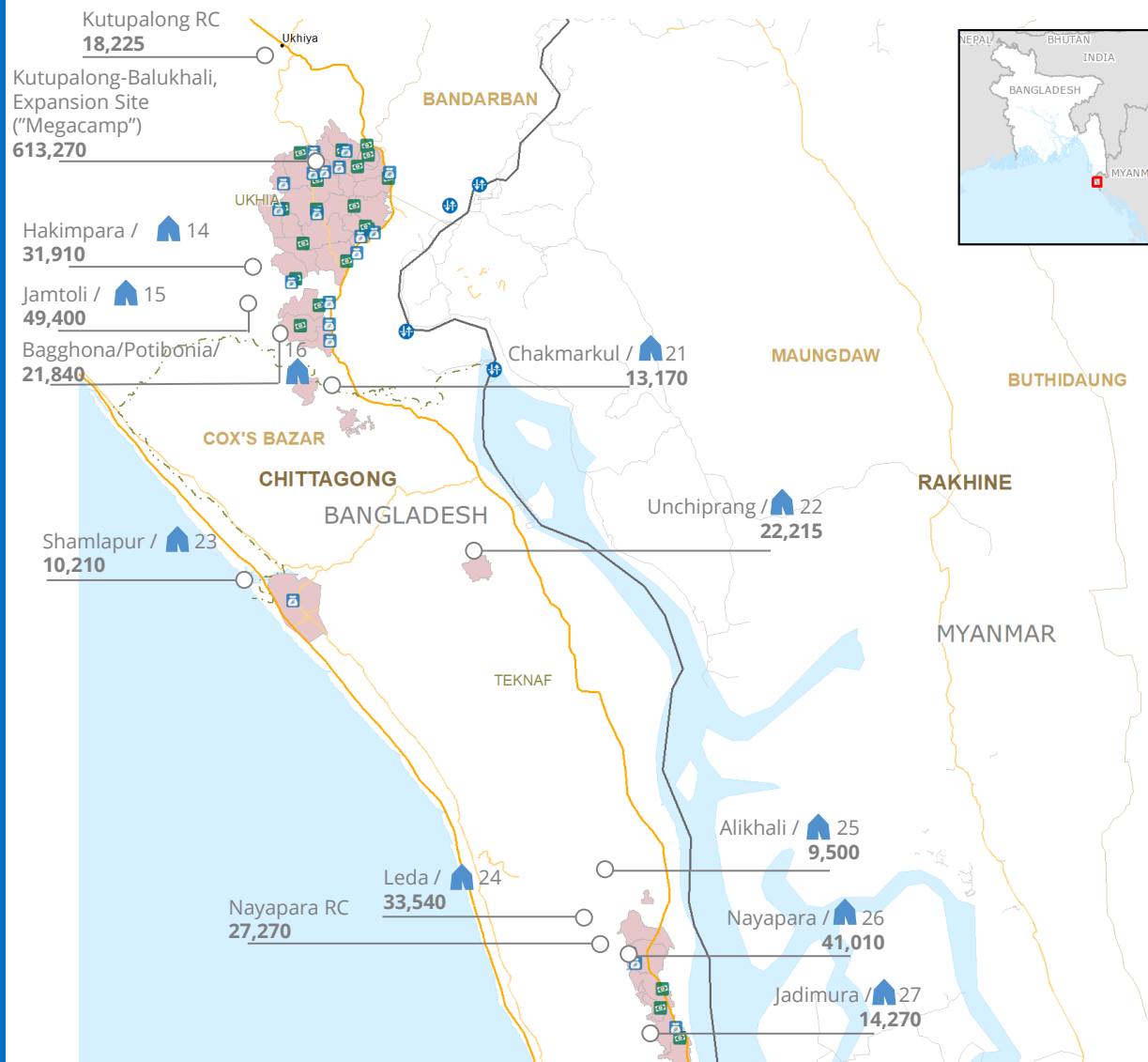


SOURCE: WFP, 07 MAY 2020

WFP-LED AND SUPPORTED SECTORS



SOURCE: WFP/FITS, 27 MAY 2020



- Food Distribution Point
- WFP Voucher Outlet
- Number of camps
- Refugees in Host Communities
- # Numbers indicate camp population figures
- Border Crossing Point
- Primary
- Secondary
- Tertiary
- Track/Trail
- International boundary
- State boundary
- Township Boundary
- Union Boundary

* Targeted Supplementary Feeding for Children under 5 / Pregnant and Lactating Women

** Blanket Supplementary Feeding for Children under 5 / Pregnant and Lactating Women