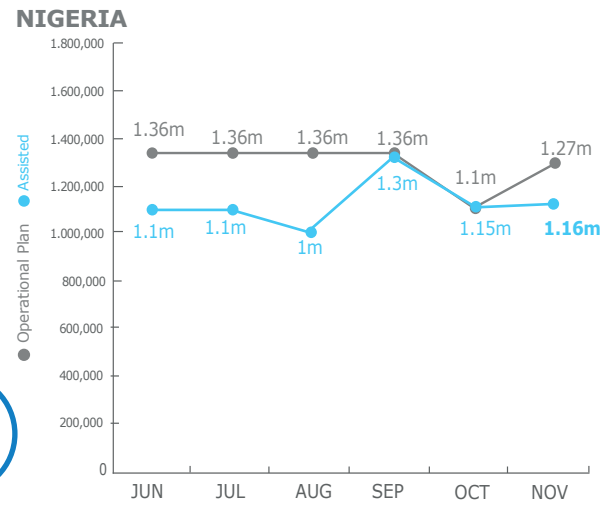
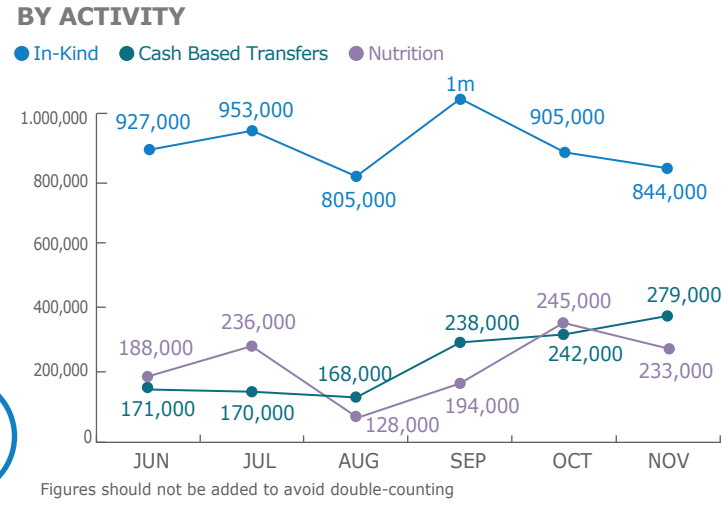


**PEOPLE ASSISTED**  
Emergency Operation 200777



**OPERATIONAL PROFILE**



**FUNDING**



Nigeria component of Regional Emergency Operation 200777

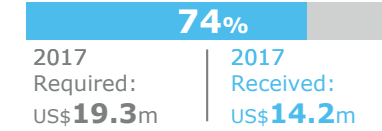
January - June 2018  
**US\$37m**  
Net Funding Requirements

2017 operations **77% funded**

Source: WFP, 21 December 2017

PROJECT RESOURCES: COMMON SERVICES

Special Operation 200834  
UN Humanitarian Air Services (UNHAS) Nigeria



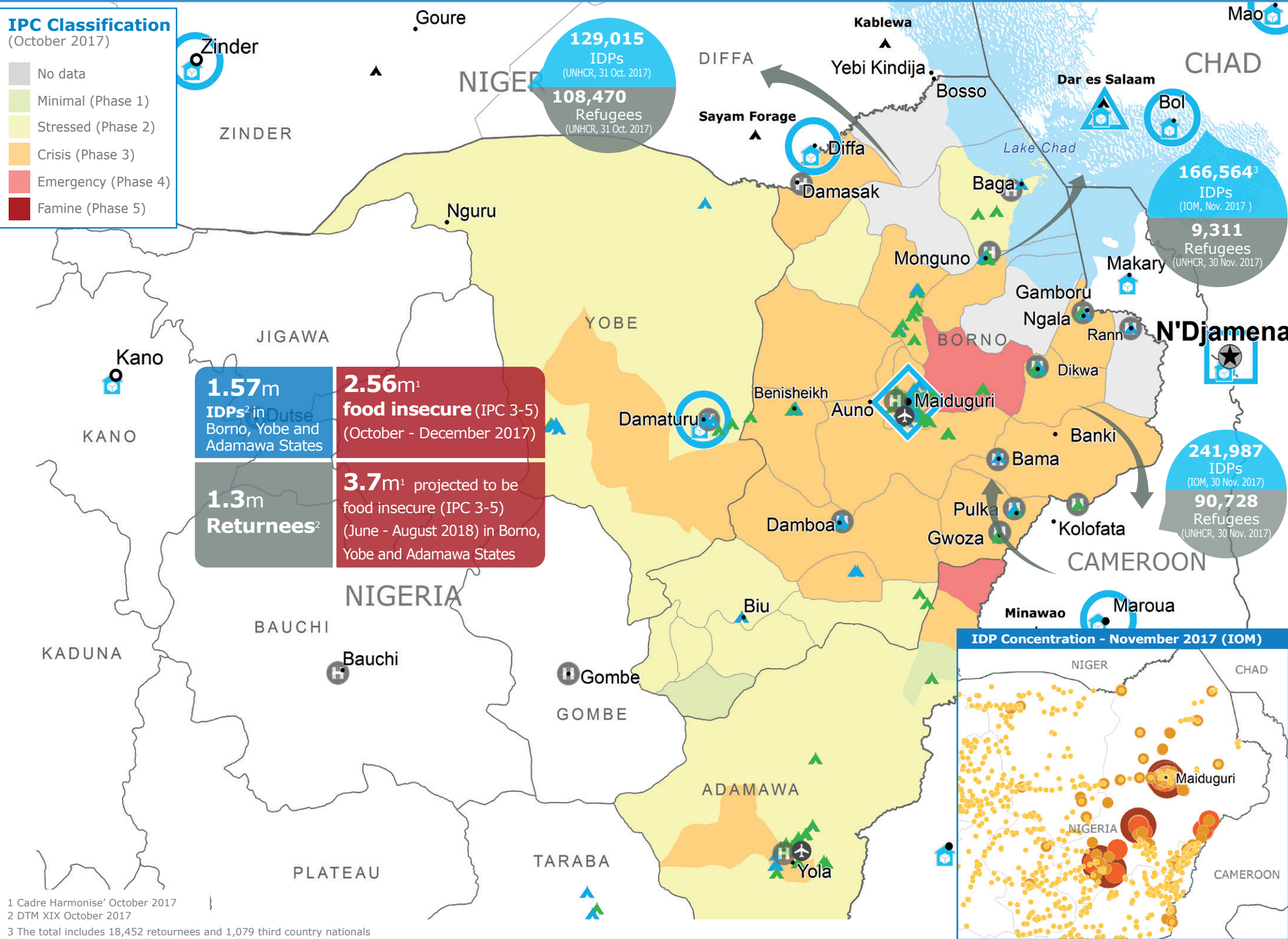
Special Operation 201032  
(Logistics and Emergency Telecommunication Sectors)



Source: WFP, 15 December 2017

**IPC Classification**  
(October 2017)

- No data
- Minimal (Phase 1)
- Stressed (Phase 2)
- Crisis (Phase 3)
- Emergency (Phase 4)
- Famine (Phase 5)

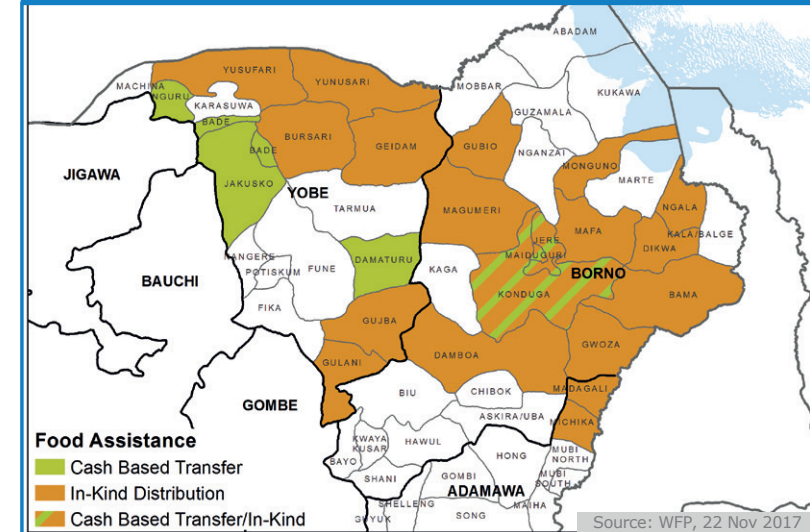


1 Cadre Harmonise' October 2017  
2 DTM XIX October 2017  
3 The total includes 18,452 returnees and 1,079 third country nationals

- Country Office
- Area Office
- Sub Office
- Field Office
- WFP Warehouse
- Refugee Camp
- UNHAS Connection
- Ad-Hoc Rotary-Wing Destination
- IDPs Site Type
- IDP Camp
- IDP Collective Centre
- National Capital
- Major Town
- Intermediate Town
- International Boundary
- Region Boundary
- Number of IDPs by location October 2017 (IOM)

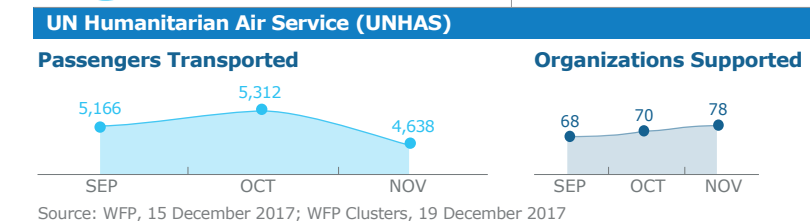
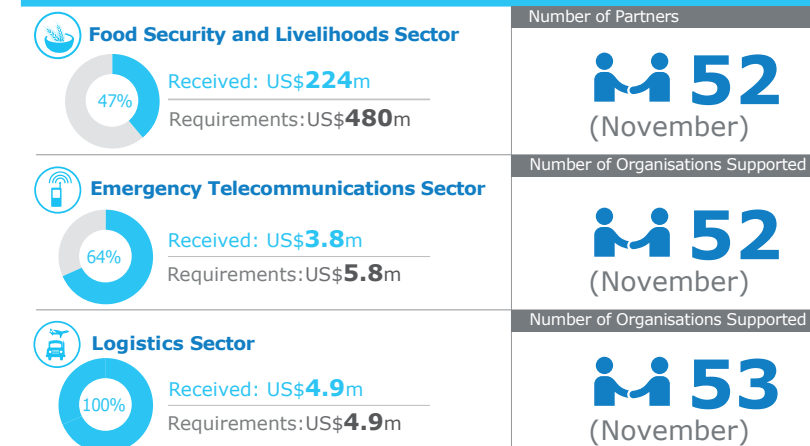
Sources: WFP, UNGIWG, GAUL, GLCSC, UNHCR, IOM. UNHCR Nigeria Displacement Dashboard June 2016  
The designations employed and the presentation of material in the map(s) do not imply the expression of any opinion on the part of WFP concerning the legal or constitutional status of any country, territory, city or sea, or concerning the delimitation of its frontiers or boundaries.  
© World Food Programme 2017

**WFP OPERATIONAL PRESENCE AND FOOD ASSISTANCE MODALITIES**



Source: WFP, 22 Nov 2017

**WFP LED & CO-LED SECTORS**



Source: WFP, 15 December 2017; WFP Clusters, 19 December 2017

**WFP LEVEL 3 EMERGENCY** SINCE 11 AUGUST 2016

For more information, see the **SITUATION REPORT** and **COUNTRY BRIEF** [www.wfp.org/countries/nigeria](http://www.wfp.org/countries/nigeria)

**2A** Regional Emergency Operation 200777  
[documents.wfp.org/stellent/groups/public/documents/ep/WFP284303.pdf](http://documents.wfp.org/stellent/groups/public/documents/ep/WFP284303.pdf)

Produced by the WFP **Operations Centre (OPSCEN)** jointly with Country Office and Regional Bureau Dakar

This dashboard is based on best available information at the time of production. Future updates may vary as new information becomes available.