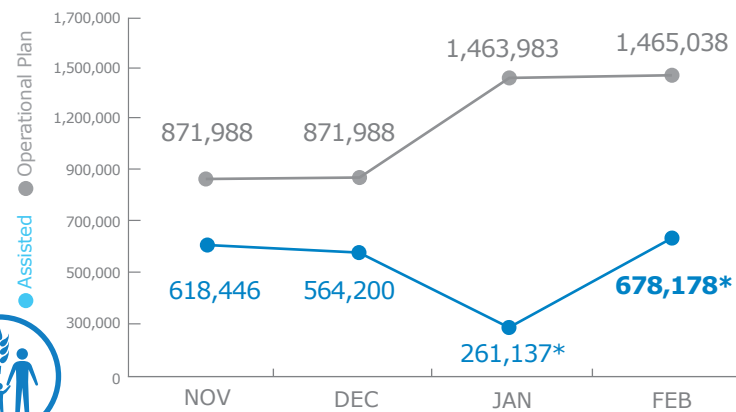


PEOPLE ASSISTED

Interim Country Strategic Plan (2018-2020)



* Figures as of January fall under the I-CSP. Decrease due to funding shortfalls and suspension of distributions.

FUNDING

Interim Country Strategic Plan (2018-2020)



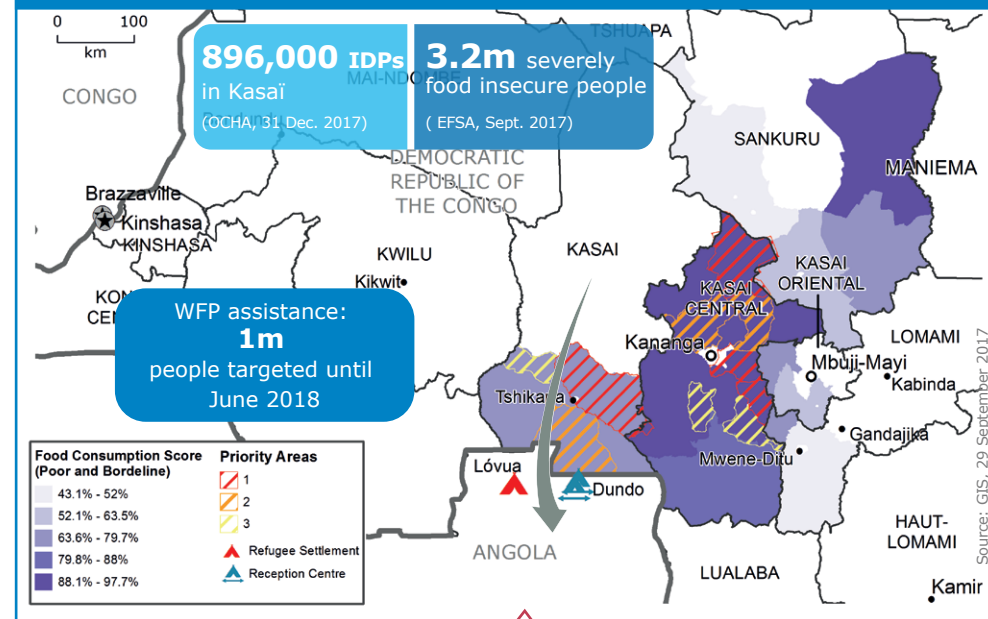
March - August 2018

US\$ 169.1m
Funding shortfall*

2018 Operations 32% funded

* Includes the funding shortfall for Kasai

KASAI CRISIS



WFP Emergency Assistance in Kasai

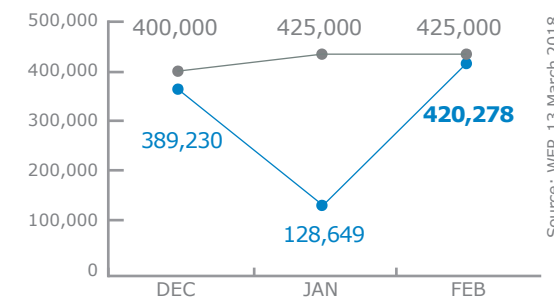
March - August 2018

US\$ 55.2m
Funding shortfall

Source: WFP, 19 March 2018



People Assisted in Kasai



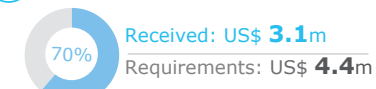
*Ration cuts in effect due to funding shortfalls

WFP-LED & CO-LED CLUSTERS

Food Security and Livelihoods Cluster



Logistics Cluster



Number of Partners

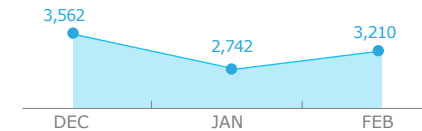
67
(February)

Organizations supported

78
(February)

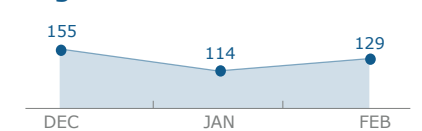
UN Humanitarian Air Service (UNHAS)

Passengers Transported



Sources: OCHA FTS, 29 March 2018; WFP, 22 March 2018

Organizations Served



WFP LEVEL 3 EMERGENCY

SINCE 06 OCTOBER 2017

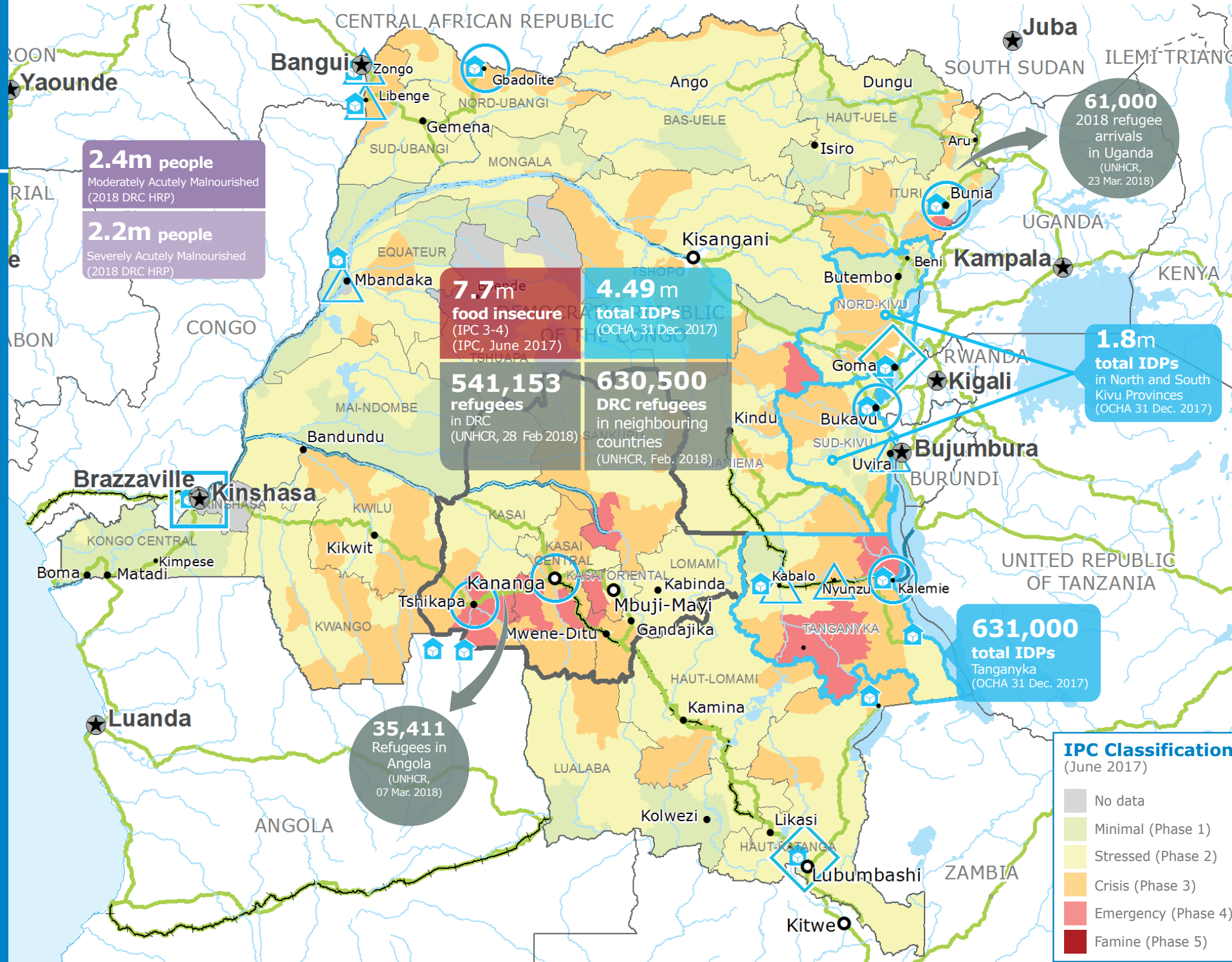
For more information, see the **SITUATION REPORT** and **COUNTRY BRIEF**
www.wfp.org/countries/congo-democratic-republic

Democratic Republic of Congo

Interim Country Strategic Plan (2018-2020)
<http://documents.wfp.org/stellent/groups/public/documents/ep/WFP284303.pdf>

Produced by the WFP Operations Centre (OPSCEN) jointly with Country Office and Regional Bureau Johannesburg

This dashboard is based on best available information at the time of production. Future updates may vary as new information becomes available.



- Country Office
- Field Office
- Road Supply Route
- National Capital
- International Boundary
- Area Office
- Warehouse
- Railway Supply Route
- Major Town
- Province boundary
- Sub Office
- Refugee Camp
- Water Supply Route
- Intermediate Town
- River
- Small town
- Surface Waterbody

Sources: WFP, UNGIWG, GAUL, GLCSC, OCHA, UNHCR, IPC
The designations employed and the presentation of material in the map(s) do not imply the expression of any opinion on the part of WFP concerning the legal or constitutional status of any country, territory, city or sea, or concerning the delimitation of its frontiers or boundaries. © World Food Programme 2018