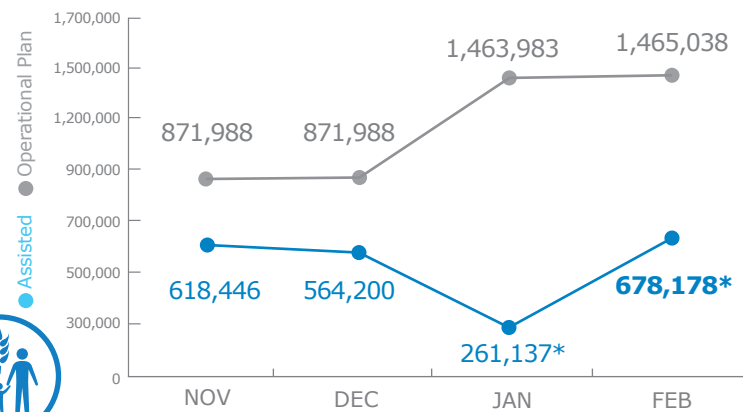


PEOPLE ASSISTED

Interim Country Strategic Plan (2018-2020)



* Figures as of January fall under the I-CSP. Decrease due to funding shortfalls and suspension of distributions.

Source: WFP, 23 March 2018

FUNDING

Interim Country Strategic Plan (2018-2020)



March - August 2018

US\$ 169.1m

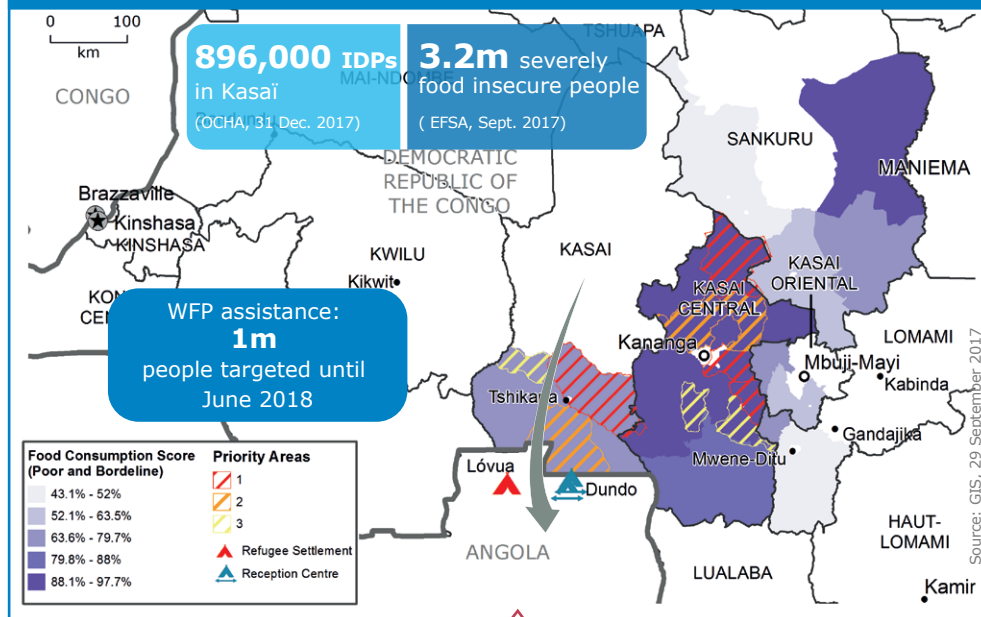
Funding shortfall*

2018 Operations 32% funded

* Includes the funding shortfall for Kasai

Source: WFP, 22 February 2018

KASAI CRISIS

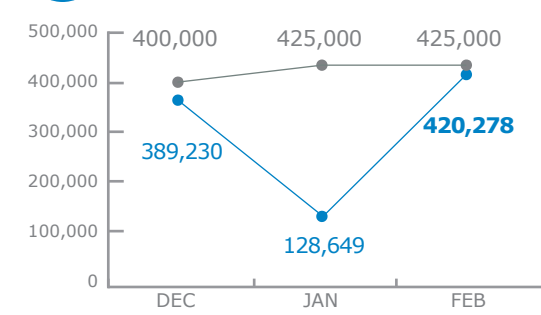


WFP Emergency Assistance in Kasai

March - August 2018
US\$ 55.2m
Funding shortfall

Source: WFP, 19 March 2018

People Assisted in Kasai



*Ration cuts in effect due to funding shortfalls

WFP-LED & CO-LED CLUSTERS

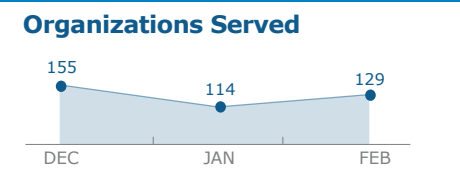
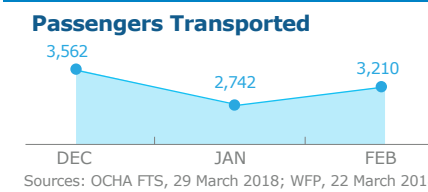
Food Security and Livelihoods Cluster
Received: US\$ 24.4m
Requirements: US\$ 580.1m

Logistics Cluster
Received: US\$ 3.1m
Requirements: US\$ 4.4m

Number of Partners
67 (February)

Organizations supported
78 (February)

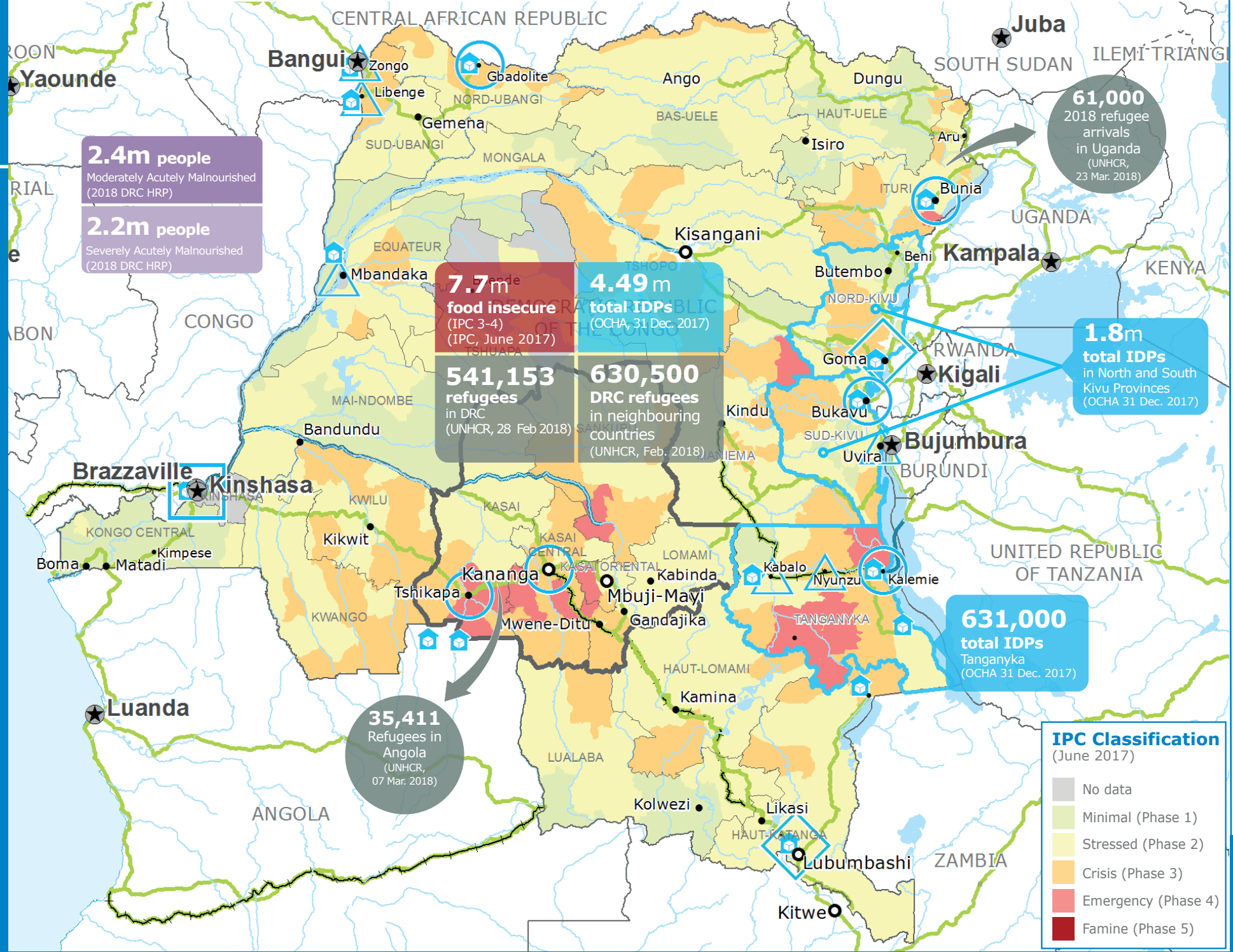
UN Humanitarian Air Service (UNHAS)



WFP LEVEL 3 EMERGENCY
SINCE 06 OCTOBER 2017

For more information, see the **SITUATION REPORT** and **COUNTRY BRIEF** www.wfp.org/countries/congo-democratic-republic
Democratic Republic of Congo
Interim Country Strategic Plan (2018-2020)
<http://documents.wfp.org/stellent/groups/public/documents/ep/WFP284303.pdf>

Produced by the WFP Operations Centre (OPSCEN) jointly with Country Office and Regional Bureau Johannesburg
This dashboard is based on best available information at the time of production. Future updates may vary as new information becomes available.



- Country Office
- Area Office
- Sub Office
- Field Office
- Warehouse
- Refugee Camp
- Road Supply Route
- Railway Supply Route
- Water Supply Route
- National Capital
- Major Town
- Intermediate Town
- Small town
- International Boundary
- Province boundary
- River
- Surface Waterbody

Sources: WFP, UNGIWG, GAUL, GLCSC, OCHA, UNHCR, IPC
The designations employed and the presentation of material in the map(s) do not imply the expression of any opinion on the part of WFP concerning the legal or constitutional status of any country, territory, city or sea, or concerning the delimitation of its frontiers or boundaries. © World Food Programme 2018