



World Food Programme

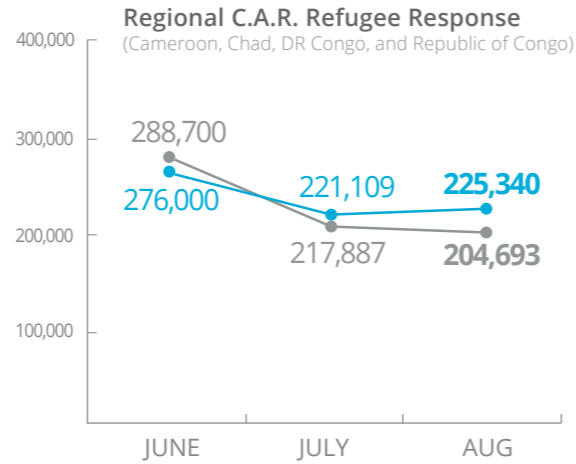
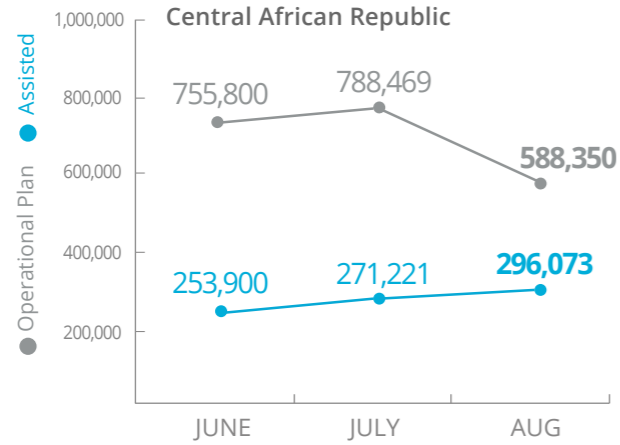
Emergency Dashboard | September 2018

SAVING LIVES  
CHANGING LIVES

# Central African Republic

## PEOPLE ASSISTED

Regional Emergency Operation 200799



SOURCE: WFP, 28 SEPTEMBER 2018

## FUNDING

C.A.R. Interim Country Strategic Plan (2018-2020)

October 2018 - March 2019

# USD64.2m

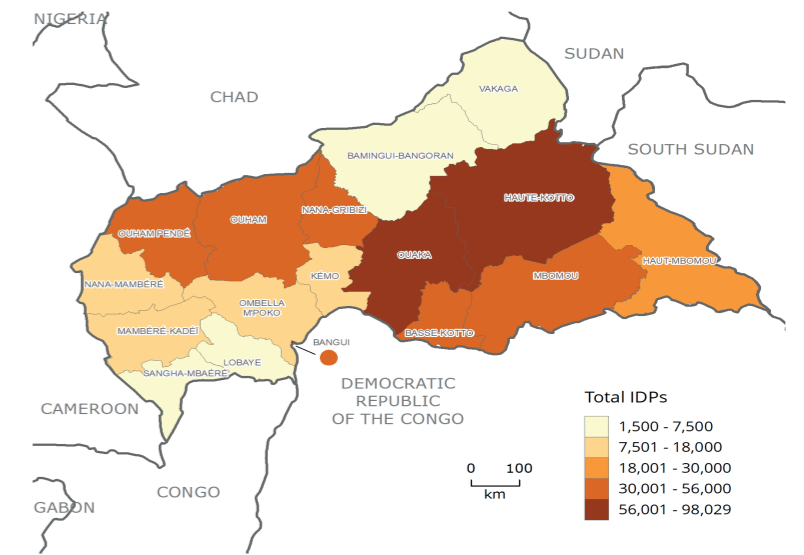
Net funding requirement



SOURCE: WFP, 01 OCTOBER 2018

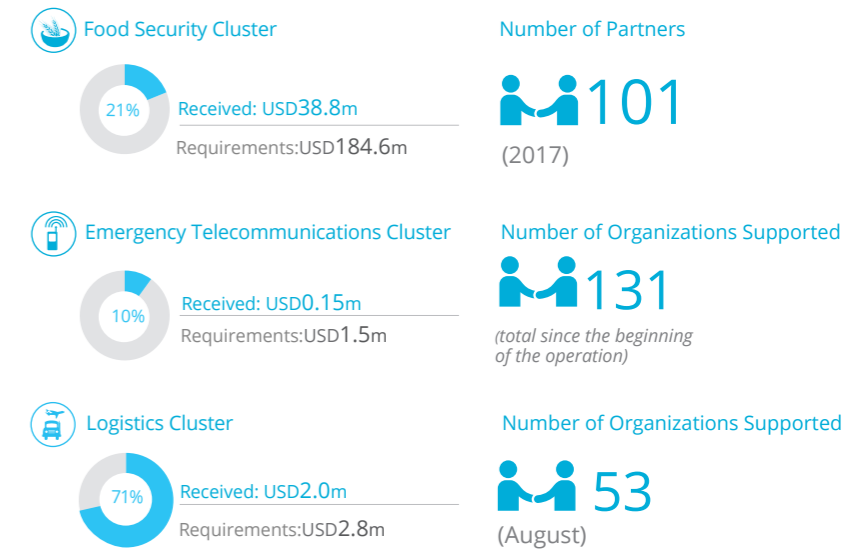
## INTERNAL DISPLACEMENT

AS OF SEPTEMBER 2018

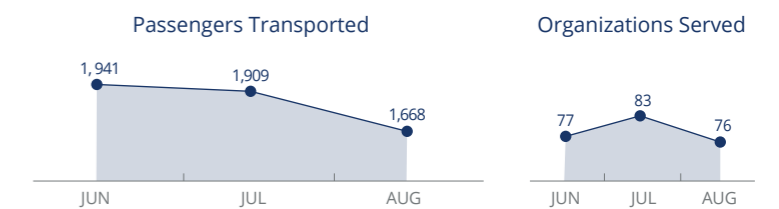


SOURCE: COMMISSION MOUVEMENT DE POPULATIONS, SEPTEMBER 2018

## WFP LED & SUPPORTED CLUSTERS



## UN Humanitarian Air Service (UNHAS)



SOURCES: OCHA FTS, 31 AUGUST 2018; Clusters, 28 September 2018

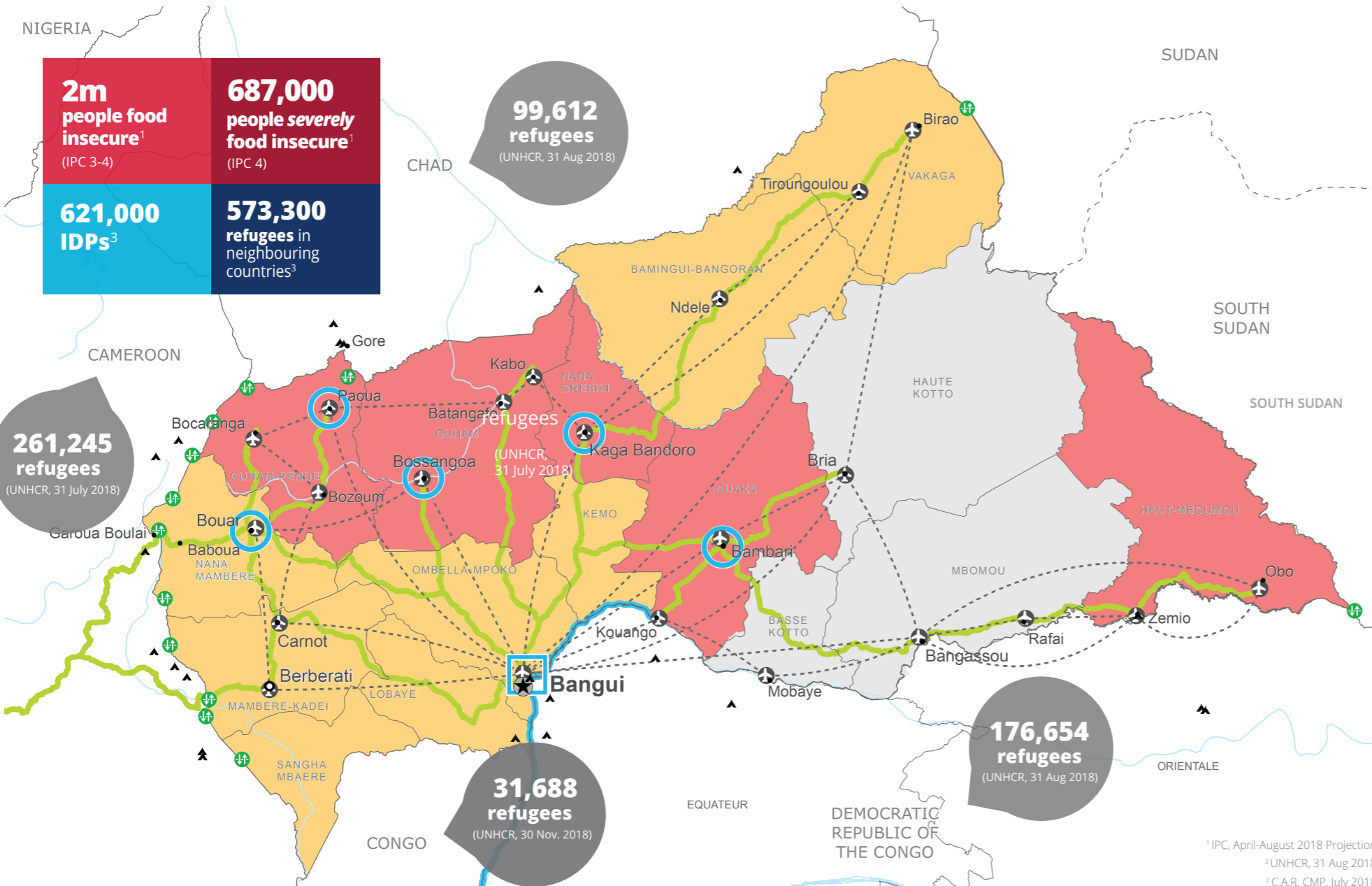
## WFP LEVEL 2 EMERGENCY

SINCE 02 JUNE 2015

For more information, see the SITUATION REPORT and COUNTRY BRIEF [www.wfp.org/countries/central-african-republic](http://www.wfp.org/countries/central-african-republic)

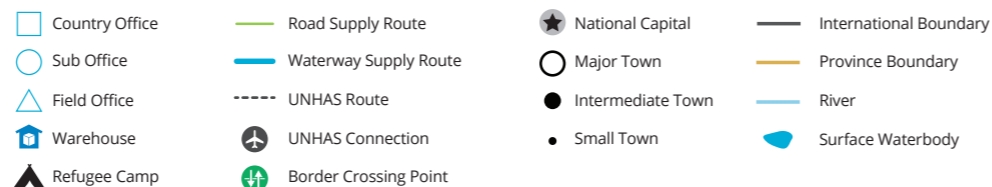
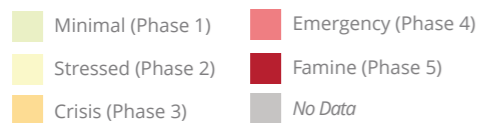
**2A** C.A.R Interim Country Strategic Plan (2018-2020) <http://documents.wfp.org/stellent/groups/public/documents/ep/WFP284303.pdf>

Produced by the WFP Operations Centre (OPSCEN) jointly with Country Office and Regional Bureau Dakar. This dashboard is based on best available information at the time of production. Future updates may vary as new information becomes available.



### IPC Food Security Classification

April - August 2018 Projection



Sources: WFP, UNGIWG, GAUL, GLCSC, OCHA, UNHCR.

The designations employed and the presentation of material in the map(s) do not imply the expression of any opinion on the part of WFP concerning the legal or constitutional status of any country, territory, city or sea, or concerning the delimitation of its frontiers or boundaries. © World Food Programme 2018.