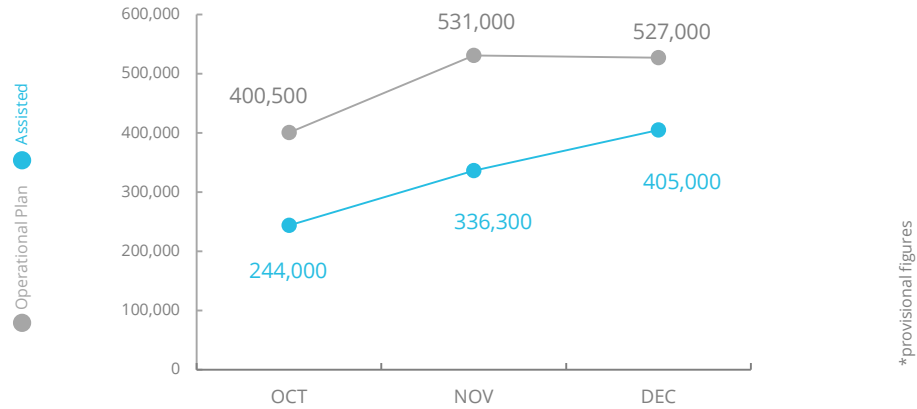




World Food Programme

Burkina Faso

PEOPLE ASSISTED Country Strategic Plan (CSP)



SOURCE: WFP, 22 JAN 2020

FUNDING Burkina Faso Country Strategic Plan (CSP) of which for the Emergency Response:

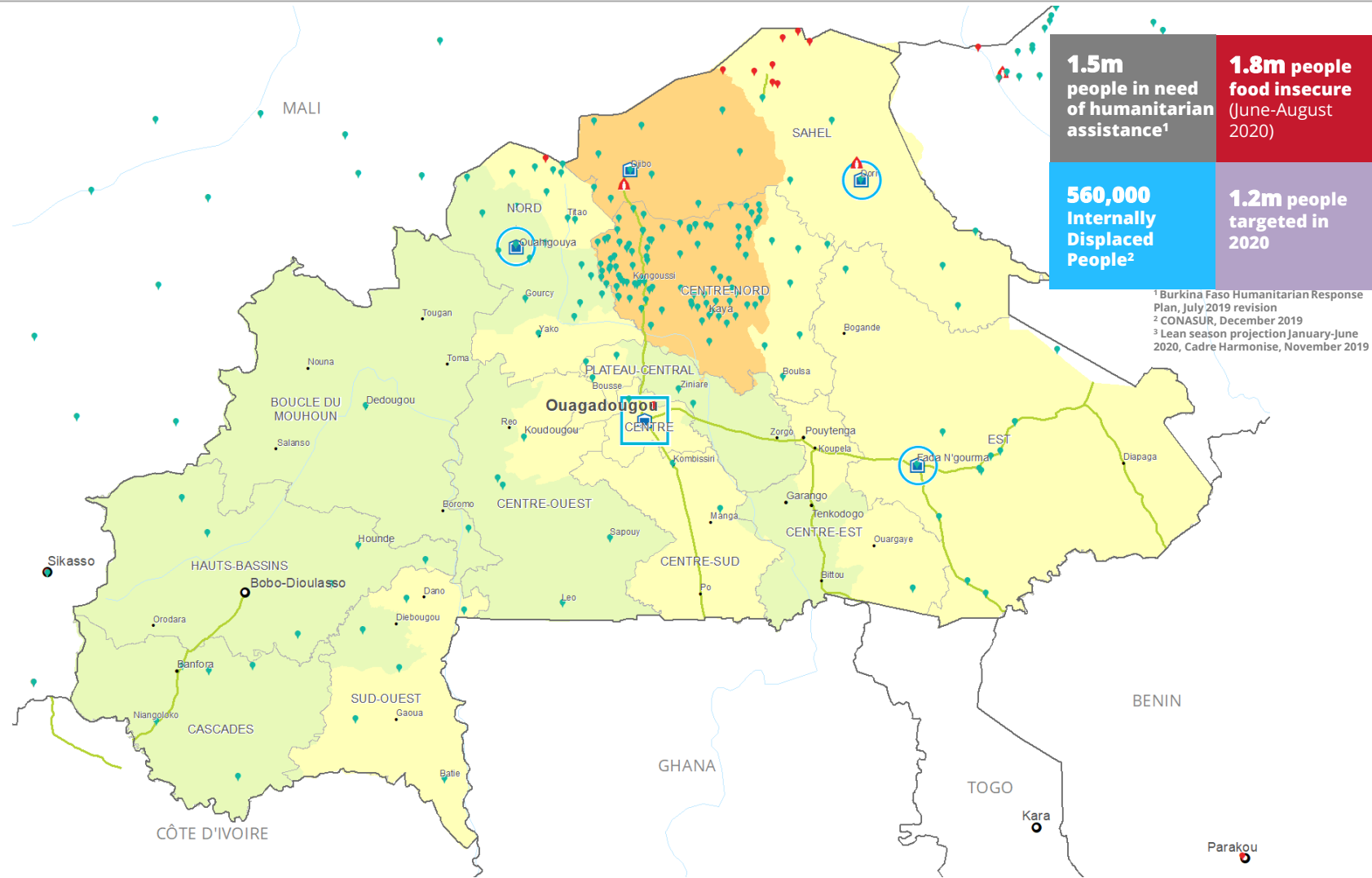
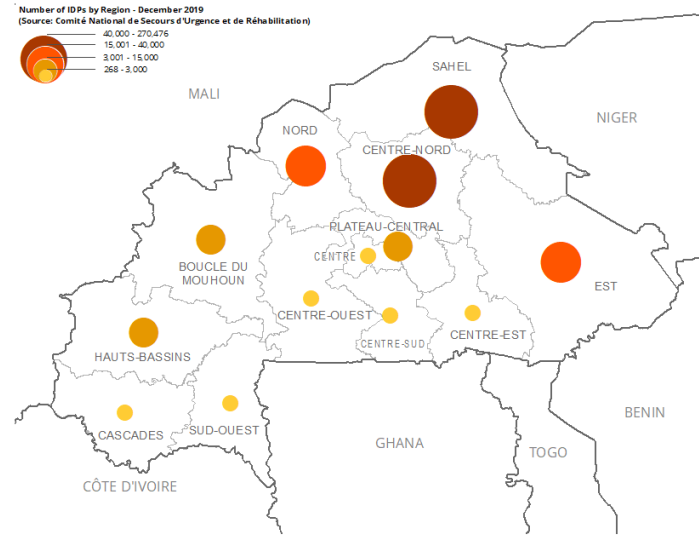
January 2020 - June 2020
**Net funding requirements
US\$42m**

2019 HUMANITARIAN RESPONSE PLAN



SOURCE: WFP, 17 JAN 2020

INTERNAL DISPLACEMENT CONCENTRATION AS OF DECEMBER 2019



CH Food Security Classification June - August 2019 Projection

- No data
- Minimal (Phase1)
- Stressed (Phase2)
- Crisis (Phase3)
- Emergency (Phase 4)
- Famine (Phase5)

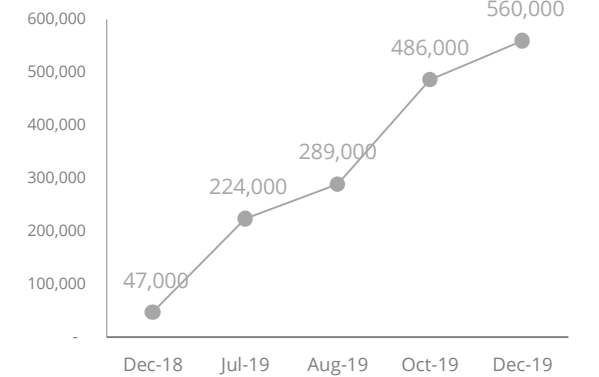
- Country Office
- Sub Office
- Field Office
- Warehouse
- IDP Location
- Refugee Location
- Road Supply Route
- Railway Supply Route

- National Capital
- Major Town
- Intermediate Town
- Small Town
- International Boundary
- Region Boundary
- River
- Surface Waterbody

Sources: WFP, OCHA, UNHCR,

The designations employed and the presentation of material in the map(s) do not imply the expression of any opinion on the part of WFP concerning the legal or constitutional status of any country, territory, city or sea, or concerning the delimitation of its frontiers or boundaries.
© World Food Programme 2019.

INTERNAL DISPLACEMENT FIGURES



SOURCE: OCHA, Gov (CONASUR), 09 DEC 2019

WFP-LED AND SUPPORTED CLUSTERS

FOOD SECURITY SECTOR



NUTRITION SECTOR



SOURCE: WFP, JAN 2020

WFP LEVEL 3 EMERGENCY

Level 2 Emergency since 10 May 2019 and part of the Central Sahel Level 3 Emergency since 09 September 2019

For more information, see the [SITUATION REPORT](#) and [COUNTRY BRIEF](#)
<https://www.wfp.org/countries/burkina-faso>

Burkina Faso Country Strategic Plan
https://www.wfp.org/operations/bf02_burkina-faso-country-strategic-plan-2019-2023

Produced by the WFP Operations Centre (OPSCEN) jointly with Country Office and Regional Bureau Dakar. This dashboard is based on best available information at the time of production. Future updates may vary as new information becomes available.