

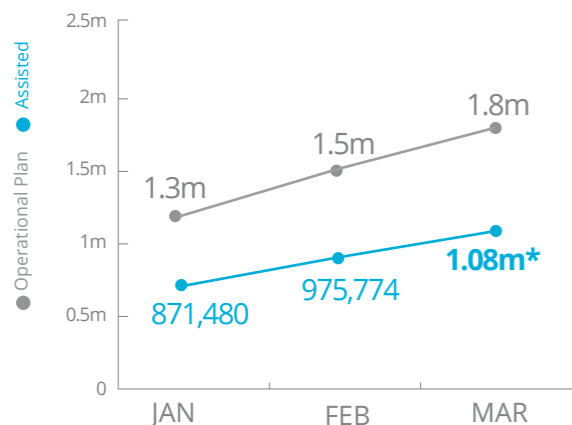


World Food Programme

# Democratic Republic of Congo

## PEOPLE ASSISTED

DR Congo Interim Country Strategic Plan (ICSP)  
(Activities in the six provinces covered by WFP L3 Emergency Response)



\*Distribution figures are estimates awaiting final data

## OPERATIONAL PROFILE



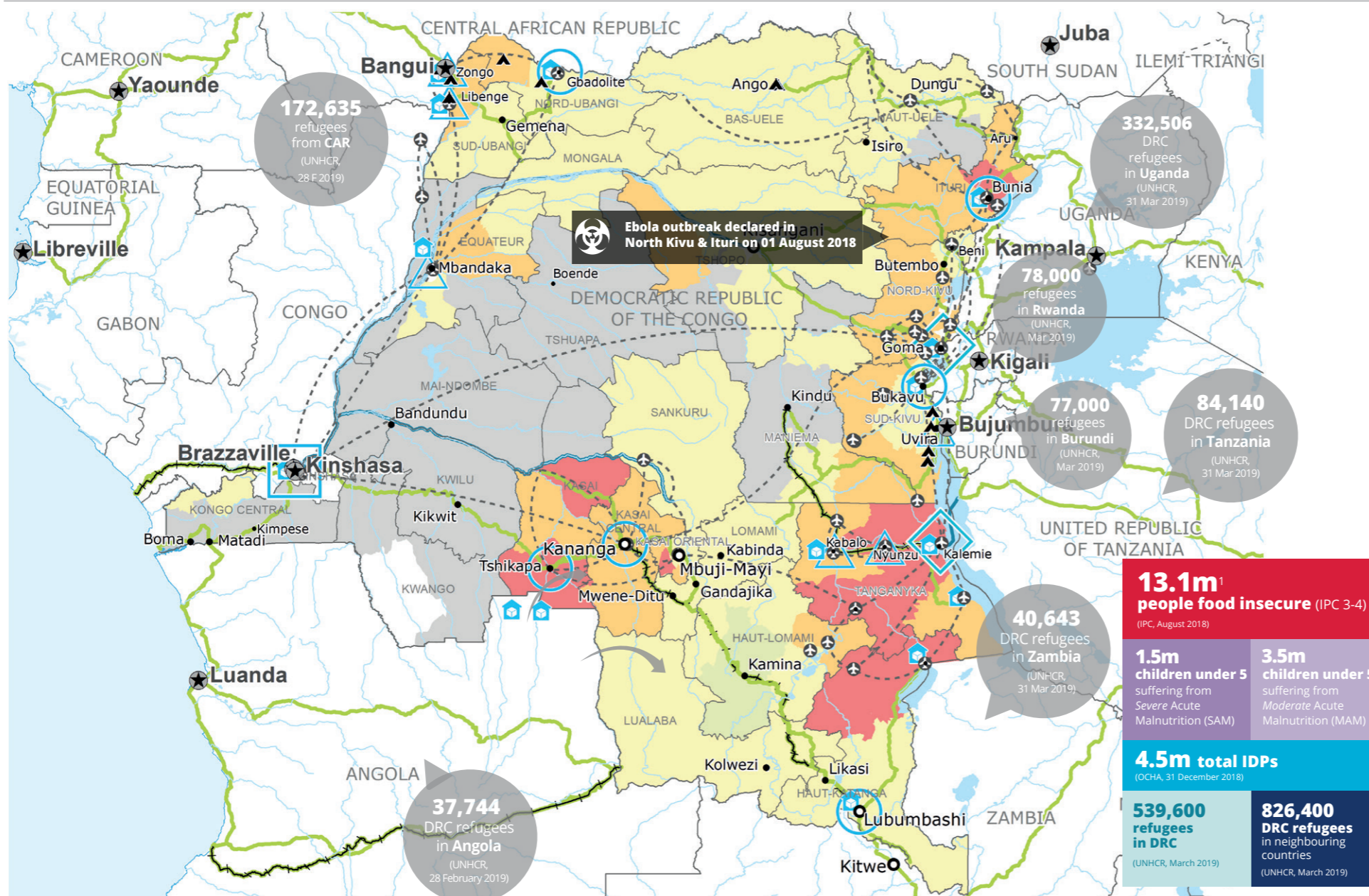
Percentages may include overlaps, i.e. beneficiaries that have been assisted through two or more activities/modalities.

## FUNDING

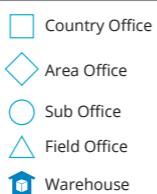
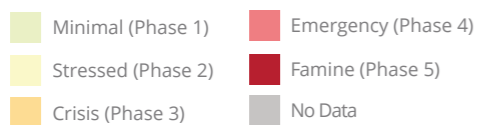
DR Congo Interim Country Strategic Plan (ICSP)

May - October 2019  
**US\$102.2m**  
Net funding requirement

2019 LEVEL 3 RESPONSE  
REQUIREMENTS: US\$452.8



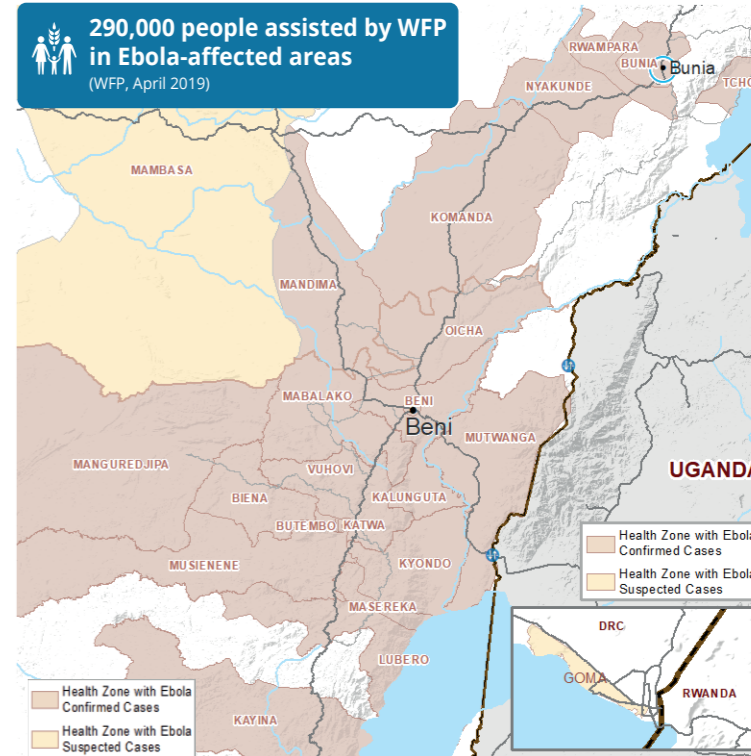
### IPC Food Security Classification (August 2018)



Sources: WFP, UNGIWG, GAUL, GLSCS, OCHA, UNHCR, IPC.

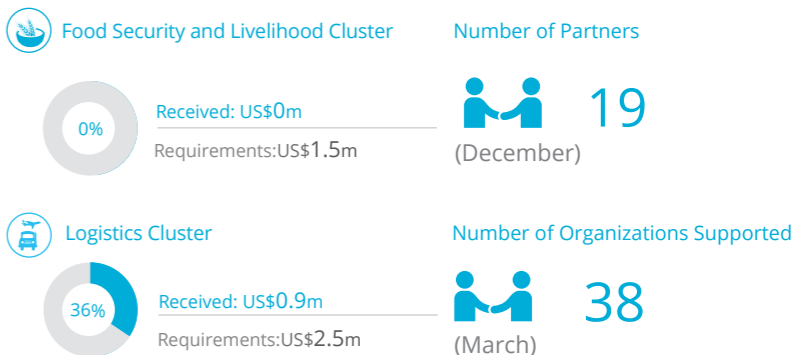
The designations employed and the presentation of material in the map(s) do not imply the expression of any opinion on the part of WFP concerning the legal or constitutional status of any country, territory, city or sea, or concerning the delimitation of its frontiers or boundaries. © World Food Programme 2019.

## EBOLA AFFECTED HEALTH ZONES

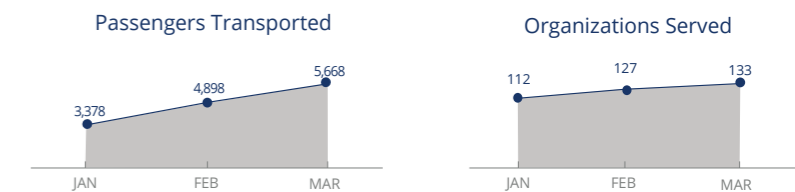


SOURCE: WHO, APRIL 2019

## WFP LED & SUPPORTED CLUSTERS



## UN Humanitarian Air Service (UNHAS)



## WFP LEVEL 3 EMERGENCY

SINCE 06 OCTOBER 2017 (LEVEL 2 EMERGENCY SINCE 12 DEC 2013)

For more information, see the SITUATION REPORT and COUNTRY BRIEF [www.wfp.org/countries/congo-democratic-republic](http://www.wfp.org/countries/congo-democratic-republic)

2A Interim Country Strategic Plan (2018-2020)

Produced by the WFP Operations Centre (OPSCEN) jointly with Country Office and Regional Bureau Johannesburg. This dashboard is based on best available information at the time of production. Future updates may vary as new information becomes available.