

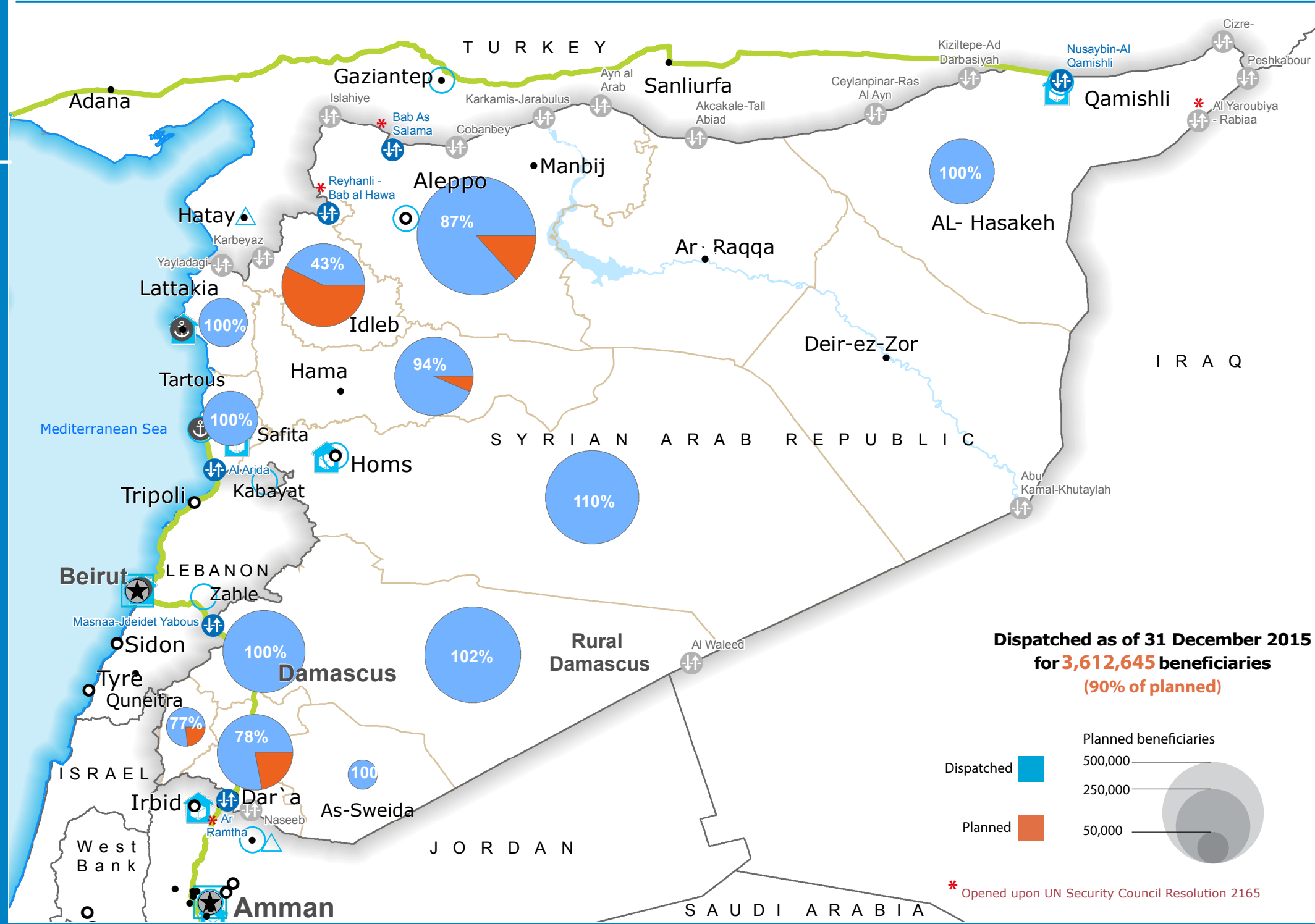
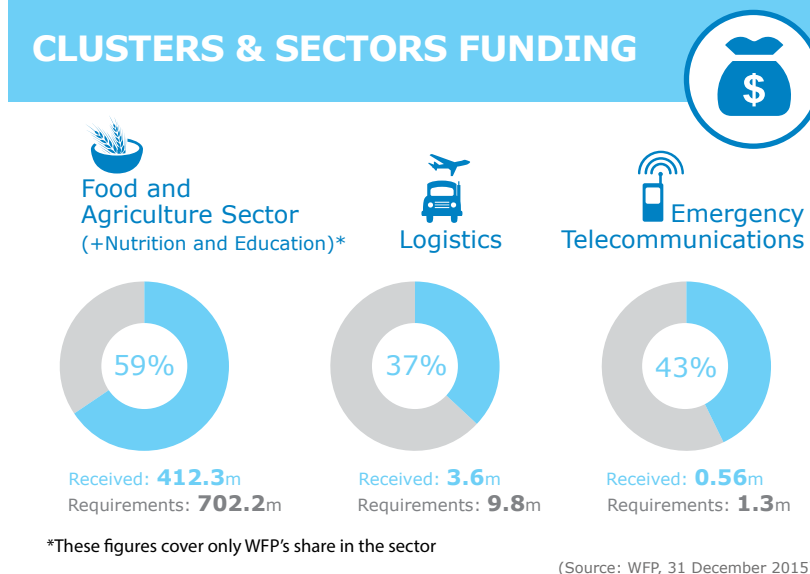
4.36 million refugees in the Region

8.7 million in need of Food & Livelihood Support

6.5 million IDPs

OPERATIONAL CHALLENGES

- Insecurity** (Icon: Starburst)
- Humanitarian Access** (Icon: Truck with arrow)
- Resources** (Icon: Money bag)



- Country Office (Square)
- Field Office (Triangle)
- Warehouse (House icon)
- Refugee / IDP Camp (Star icon)
- Road Supply Route (Green line)
- Official Border Crossing Point (Circle with T)
- National Capital (Star in circle)
- Major Town (Large circle)
- Intermediate Town (Medium circle)
- Small Town (Small circle)
- International boundary line (Dashed line)
- Governorate Boundary (Thin solid line)
- Port (Anchor icon)
- Closed Border Crossing Point (Circle with T and slash)

Sources: OCHA, WFP, GLCSC, UNGIWG, UNHCR, Geonames

The designations employed and the presentation of material in the map(s) do not imply the expression of any opinion on the part of WFP concerning the legal or constitutional status of any country, territory, city or sea, or concerning the delimitation of its frontiers or boundaries. ©World Food Programme 2015

WFP LEVEL 3 EMERGENCY
SINCE 14 DECEMBER 2012

IASC LEVEL 3 EMERGENCY
SINCE 15 JANUARY 2013

Check the SITUATION REPORT
<https://www.wfp.org/countries/syria>

Produced by the WFP Operations Centre (OPSCEN)

This dashboard is based on best available information at the time of production. Future updates may vary as new information becomes available.