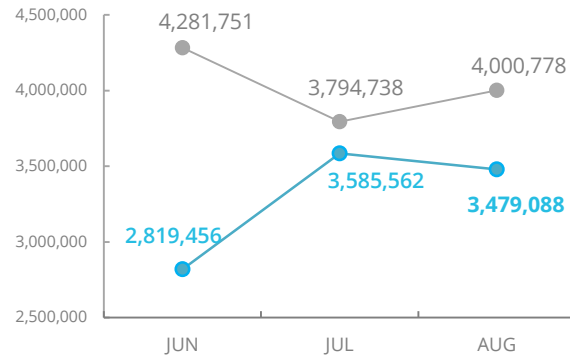


Central Sahel

PEOPLE ASSISTED Across Burkina Faso, Mali and Niger



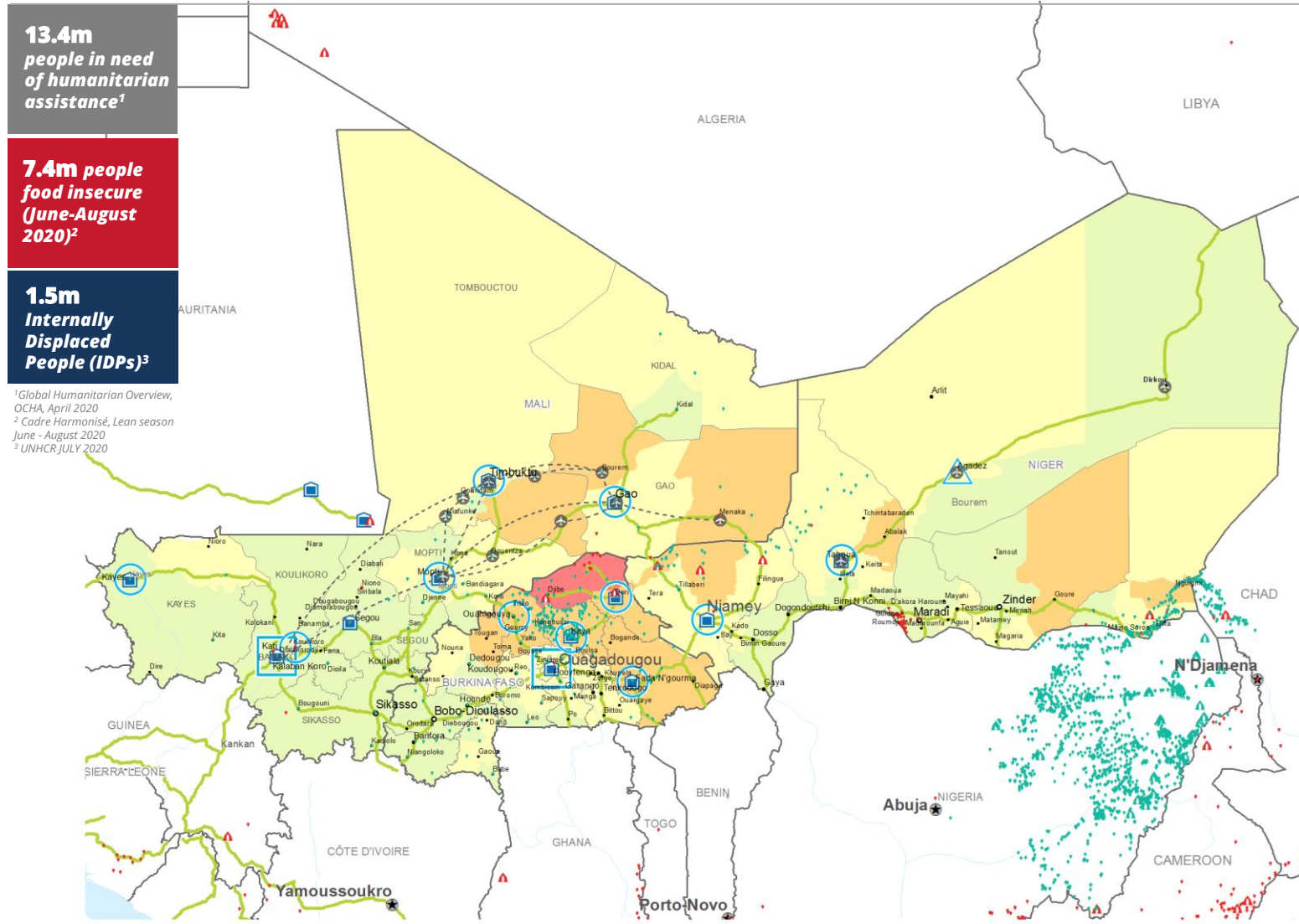
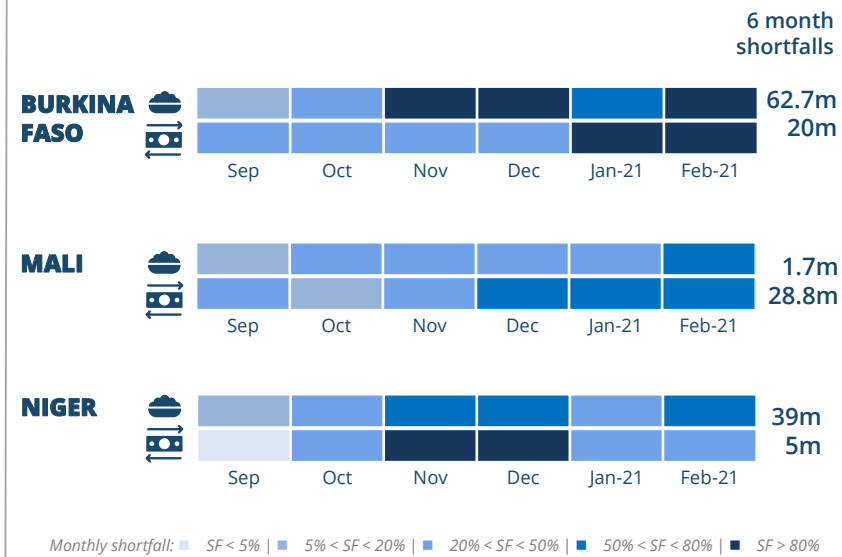
SOURCE: WFP, 12 OCT 2020

COVID-19 OPERATIONAL IMPACT

Country	WFP Response	Beneficiaries reached
BURKINA FASO	General Food Assistance (GFA) and Nutrition in emergencies: Mitigation measures in place	1,127,050 99%
	Regular Nutrition Programming: Mitigation measures in place	11,350 37%
	Food for Assets: Replacing community-based activities with individual household activities	34,900 166%
	School feeding activities	N/A
MALI	General Food Assistance (GFA) : Mitigation measures in place	1,235,300 103%
	Nutrition: Mitigation measures in place	35,000 87%
	Food for Assets: Replacing community-based activities with individual household activities	56,400 31%
	School feeding activities	73,400 74%
NIGER	GFA: Mitigation measures in place	778,1000 214%
	Nutrition: Mitigation measures in place	93,800 117%
	Food for Assets (FFA)	500,300 N/A
	School feeding activities: take home rations	N/A

EXPECTED PIPELINE BREAKS (US\$)

SOURCE: WFP, 22 SEP 2020



13.4m people in need of humanitarian assistance¹

7.4m people food insecure (June-August 2020)²

1.5m Internally Displaced People (IDPs)³

¹Global Humanitarian Overview, OCHA, April 2020
²Cadre Harmonisé, Lean season June - August 2020
³UNHCR JULY 2020

FUNDING

Burkina Faso, Mali and Niger Country Strategic Plans
November 2020 – April 2021

Country	Net funding requirements (needs based) (US\$)
BURKINA FASO	90.5m
MALI	20.6m
NIGER	68.7m
TOTAL	179.8m

SOURCE: WFP, 23 OCT 2020

AVERAGE MONTHLY REQUIREMENTS (US\$) – September

Country	Requirements (US\$)	Total
BURKINA FASO	13.8	35.9m
MALI	7.6	
NIGER	14.5	19.8m
BURKINA FASO	1.7	
MALI	8.3	
NIGER	9.8	

KEY FIGURES

Category	BURKINA FASO	MALI	NIGER
Total Population (in millions)	20.9m	20.5m	21.8m
Internally Displaced People	1,013,200	287,500	265,500
Refugees (does not include returnees)	19,900	42,800	228,700
Food Insecure People (CH Phases 3-5)	3,380,000*	1,300,000	2,700,000
People Prioritized by WFP	1,200,000	1,000,000	2,600,000

SOURCE: UNFPA, JUNE, 2020; CONASUR, AUGUST 2020; UNHCR, JUNE, JULY 2020; Cadre Harmonisé, Lean Season June - August 2020 *CILSS; Planification figures (WFP COUNTRY STRATEGIC PLANS)

CH Food Security Classification
July - August 2020

- No data
- Minimal (Phase 1)
- Stressed (Phase 2)
- Crisis (Phase 3)
- Emergency (Phase 4)
- Famine (Phase 5)
- Country Office
- Sub Office
- Field Office
- IDP Camp
- IDP Center
- IDP Location
- Refugee Camp
- Refugee Center
- Refugee Location
- Warehouse
- UNHAS Connection
- UNHAS Route
- Road Supply Route
- National Capital
- Major Town
- Intermediate Town
- Small town
- International Boundary
- Region Boundary
- River

Produced by the WFP Operations Centre (OPSCEN) jointly with Country Office and Regional Bureau Dakar. This dashboard is based on best available information at the time of production. Future updates may vary as new information becomes available.

WFP LEVEL 3 EMERGENCY SINCE 09 SEPTEMBER 2019

SITUATION REPORT and COUNTRY BRIEF