

WFP SAYS NO to GENDER BASED VIOLENCE



World Food Programme



WFP Nigeria Situation Report #4

November 2016

In Numbers

1.8 m people displaced, of which 1.3 million in Borno and 0.13 million in Yobe States

(IOM Displacement Tracking Matrix, October 2016)

4.4 m people food insecure in Borno and Yobe States

(Phases 3, 4 & 5 Cadre Harmonisé, October 2016)

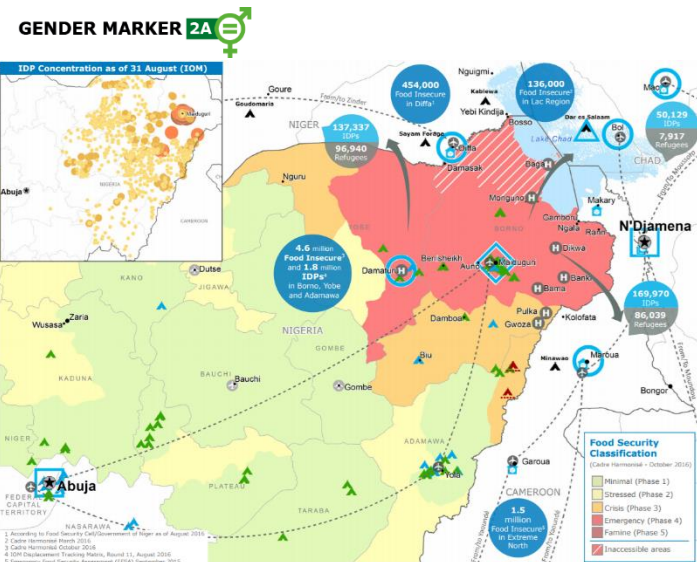
Highlights

- WFP is extending the regional Emergency Operation until December 2017, targeting 1.8 million people in Borno and Yobe States. Assistance will be delivered through in-kind food distributions and cash-based transfers, as well as supplementary nutritious food.
- The first Rapid Response Team was deployed on 23 and 24 November to Magumeri Local Government Area (LGA), delivering food rations to 6,000 people and supplementary nutritious food to 400 children. A second team was deployed to Ngala LGA on 28 November, reaching 40,000 people with food rations.

People assisted as of 30 November 2016

- ➔ Cash Based Transfers: **124,200**
- ➔ Supplementary Nutritious Food: **162,900**
- ➔ Food Distributions: **450,700**

Figures are not to be added to avoid double counting.



Situation Update

- The October *Cadre Harmonisé* indicates an extremely worrisome situation: 4.3 million people are in Phase 3 and 4 (crisis and emergency) in Borno and Yobe States, while 55,000 people are estimated to suffer from extreme food insecurity (Phase 5) in Borno State.
- Nutrition is also a major concern. Recent data are not available at national/LGA level, but critically high levels of malnutrition and under-5 mortality in north-east Nigeria were reported over the past year.

WFP Plans for 2017

- The ongoing conflict in north-east Nigeria has the potential to cause further displacements and increase food insecurity. Therefore, WFP is revising its

emergency operation to implement a **robust scale up and an integrated response** to meet the overwhelming needs in north-east Nigeria, targeting 1.8 million people in Borno and Yobe States in 2017.

- The **bulk of the expansion** will be done through in-kind assistance, expanding to new areas, whereas cash-based transfers (CBT) will continue where already operationalized. Prevention of malnutrition for children aged 6 to 59 months will remain integrated with cash/in-kind assistance, and will be extended to pregnant and nursing women.
- **Rapid response mechanisms and teams** set up jointly with UNICEF will be part of the scale up in deep field areas where insecurity prevents regular access.
- Where population returns are possible, **livelihood support** interventions will be established to support early recovery and help reduce reliance on food assistance.

WFP's scale up in November

- In view of the plans for 2017, WFP has already started increasing its assistance, **shifting to a growing number of in-kind food distributions**. In November, WFP delivered in-kind food assistance to 400,000 people, of which 309,400 in Borno State, including 46,000 people reached through Rapid Response Teams in Magumeri and Ngala LGAs, and 90,500 in Yobe State.
- Despite the lack of timely escorts and the increase in security incidents in November, further restricting staff movements, WFP expanded its geographical coverage reaching for the first time settlements such as Farm Centre, Teachers' Village and Customs House in Konduga LGA, and Zannari and Alau in Maiduguri. Mafa and Kaga LGAs in Borno State were also reached for the first time, as well as and Geidam, Gulani and Gujba in Yobe State. Due to the higher security risks, four armored vehicles are in transit to Maiduguri while thirteen more are being procured.
- In November, WFP reached 135,000 children aged 6-59 months with nutritious foods to prevent malnutrition, including 80,000 children in several wards and LGAs

where in-kind distributions are not implemented, such as Bale Galtimari in Jere and Bolori 1 & 2 in Maiduguri LGAs, as well as Monguno LGA (Borno State) and Bade, Nguru and Bursari LGAs in Yobe State.

- WFP also reached 110,000 people in November through CBT in Borno and Yobe States, including 12,300 people reached for the first time across Jere and Maiduguri LGAs, and 5,700 families enrolled in the Integrated Nutrition Project with ACF and UNICEF. Under this programme, families with children suffering from Severe Acute Malnutrition receive a monthly transfer to maximize the impact of the nutrition interventions and reduce the occurrence of SAM relapse. Children are referred to health facilities for treatment.
- In December, distribution plans aim to further scale up assistance across Borno and Yobe States by reaching over 868,000 people with in-kind food assistance; 256,000 children at risk of malnutrition; and 195,000 people through CBT. Over 14,000 mt of food are to be distributed. To allow timely assistance, fast-tracked registration process will be used. In January, WFP plans to reach 1.3 million beneficiaries.
- To support the scale up, a solid staffing structure is being put in place in key locations, comprising of both international and national staff.
- In November, WFP held meetings in Damaturu, Maiduguri and Abuja to expand its partner network in Borno and Yobe States and to secure strategic partnerships in addition to those already in place, which have been extended into 2017. WFP will use a lighter partnership structure in view of the emergency context.

Cash-Based Transfers

- WFP has adjusted the monthly cash transfer value from 17,000 to 23,550 Nigerian Naira to reflect the latest market price data.
- At the high-level WFP-Airtel-Access Bank meeting in Lagos on 15 November, the three parties agreed to address the current challenges faced by CBT (liquidity and staffing capacity). A senior joint WFP-Airtel-Access Bank field mission to LGAs in Borno and Yobe States where CBT are in place is scheduled from 28 November for 10 days. Based on the outcome of the mission, the concept of operations will be revised and ready for implementation starting January 2017.
- A multi-sectorial capacity assessment is ongoing with 60 enumerators collecting data in seven LGAs in Borno and ten LGAs in Yobe States. The evaluation aims to enhance quality programing by assessing local markets, protection issues and capacities, and to propose feasible cash transfer modalities. Results of the assessment, coupled with the outcomes of the high-level mission, will be directed to address the challenges faced by CBT in north-east Nigeria.

Integrating food security and nutrition

- WFP and UNICEF held a regional meeting in Dakar on 10 and 11 November on a joint strategy for the Lake Chad Basin to deliver a holistic package of essential health and nutrition services integrating the prevention and treatment of acute malnutrition and of interventions addressing the underlying causes of malnutrition. The joint response plan will address identified bottlenecks and gaps of the current food and nutrition response, ensuring the provision of life-saving assistance at scale, improving the coordination mechanism at global, national and operational levels, and promoting the convergence of interventions within a multi sectorial response framework.

Supply Chain

- Storage capacity amounting to 17,000 mt has been secured, which will increase through additional Mobile Storage Units (MSUs) in the main cities and at food distribution points thanks to partners; 20 MSUs are being ordered from UNHRD, and more will be ordered for NFIs storage.

Sectors and Common Services

- Preparations are ongoing to activate the first humanitarian hub in Gwoza as a pilot under the lead of the International Organization for Migration. WFP will set up telecommunications systems through the ET Sector, UNHAS flights will be ensured and the Logistics Sector will provide support as needed.

Food Security Sector

- According to the Food Security Sector, over 1.1 million people were reached from January to October 2016, of which 930,400 through food assistance, 51,000 through alternative livelihood activities and 142,000 with agricultural production inputs across Borno, Adamawa, Gombe and Yobe States.

Logistics Sector

- Cooperating partner Première Urgence International will manage a 1,500 m² warehouse on behalf of the Logistics Sector. The identified storage facility is expected to be operational in December 2016 and will be made available to the entire humanitarian community.

Emergency Telecommunications (ET) Sector

- The ET Sector is working to facilitate the expansion of the security telecommunications network. The Sector has also ordered equipment for security radio telecommunications network in Maiduguri and Damaturu, and for setting up Internet connectivity and electricity in three humanitarian hubs in the deep field.

UN Humanitarian Air Service

- As of 31 October, UNHAS has transported 10,300 passengers from 64 organizations via the fixed-wing aircraft, and 1,900 people from 27 organizations via helicopter to hard-to-access locations.

Contacts

Sory Ouane, Country Director

Mishisalla Beyene, Information Management Officer
mishisalla.beyene@wfp.org

Carlotta Negri, Information Management Officer
carlotta.negri@wfp.org

WFP Nigeria Resourcing Situation

Project	Requirements in 2017 *	6-month net funding requirements**	Total Received in 2016
EMOP 200777 (Jan 2015-Dec 2016)	USD 354 million	USD 146 million	USD 71 million
SO 200834 (Aug 2015-Dec 2017*)	USD 18 million	USD 10.9 million	USD 12.4 million
SO 201032 (Nov 2016-Apr 2017)	USD 10.1 million	USD 6.3 million	USD 3.3 million

* All operations are being revised and extended until December 2017.

** December 2016 – May 2017.