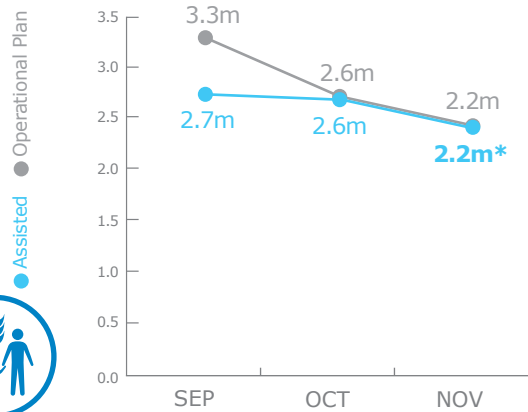


## PEOPLE ASSISTED

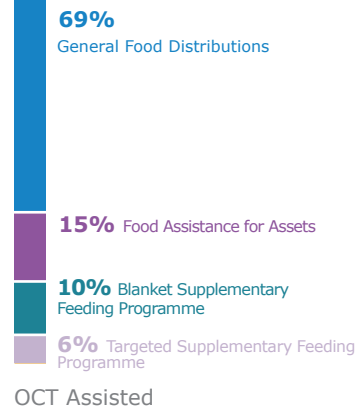
Emergency Operation 200859 and Protracted Relief & Recovery Operation 200572



\* Estimate

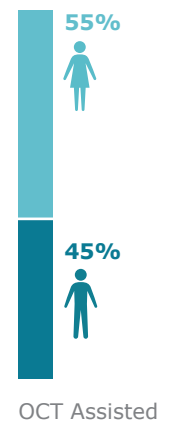
## OPERATIONAL PROFILE

### BY ACTIVITY



OCT Assisted  
Percentages of activities may include overlaps, ie. beneficiaries that have been assisted with two or more different activities.

### BY GENDER



OCT Assisted

## FUNDING

Emergency Operation 200859 and Protracted Relief & Recovery Operation 200572



January - June 2018

**USD 309m**  
Net Funding Requirements

2017 operations **59% funded**

## 2017 FUNDING REQUIREMENTS

Special Operation 201029  
UN Humanitarian Air Service (UNHAS)

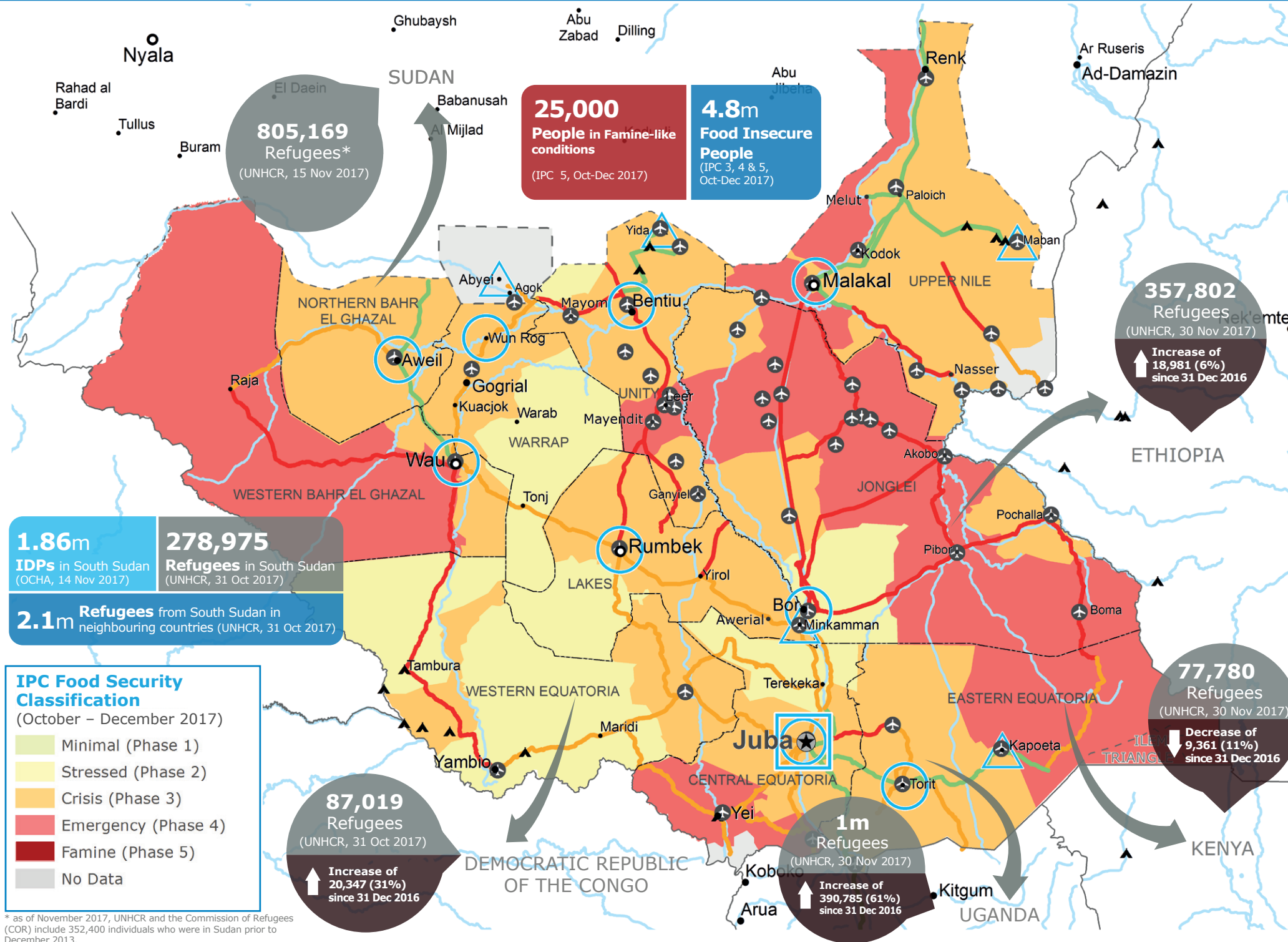
100%

Received: USD **63m** | Total Required: USD **58m**

Special Operation 200379  
Feeder Road Construction

4%

Received: USD **1m** | Total Required: USD **25m**

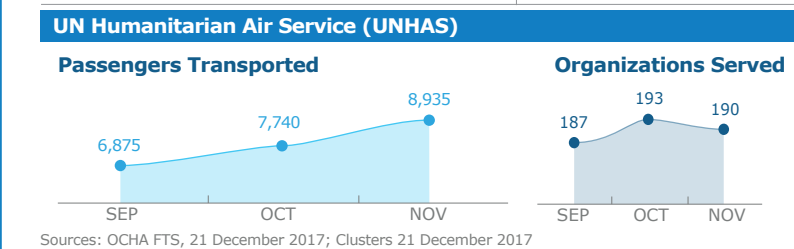


- Country Office
- Sub Office
- Field Office
- Road Open
- Closed Road
- Road with Limited Access
- Refugee / IDP Camp
- UNHAS Connection
- National Capital
- Major Town
- Intermediate Town
- Small Town
- International Boundary
- Undetermined Boundary
- Abyei Region
- State Boundary

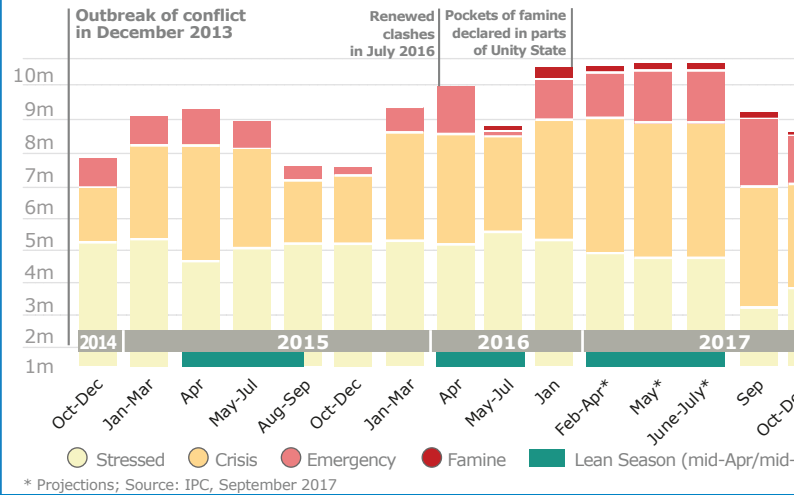
Sources: WFP, UNGIWG, GAUL, GLCSC, OCHA, UNHCR, IPC

The designations employed and the presentation of material in the map(s) do not imply the expression of any opinion on the part of WFP concerning the legal or constitutional status of any country, territory, city or sea, or concerning the delimitation of its frontiers or boundaries.  
© World Food Programme 2017

## WFP-LED & CO-LED CLUSTERS



## HISTORICAL FOOD INSECURITY (IPC)



**WFP LEVEL 3 EMERGENCY**  
SINCE 23 DECEMBER 2013  
For more information, see the **SITUATION REPORT** and **COUNTRY BRIEF** [www.wfp.org/countries/south-sudan](http://www.wfp.org/countries/south-sudan)

**2A** EMOP 200859  
[documents.wfp.org/stellent/groups/public/documents/ep/WFP284303.pdf](http://documents.wfp.org/stellent/groups/public/documents/ep/WFP284303.pdf)

Produced by the WFP **Operations Centre (OPSCEN)** jointly with Country Office and Regional Bureau Nairobi  
This dashboard is based on best available information at the time of production. Future updates may vary as new information becomes available.

