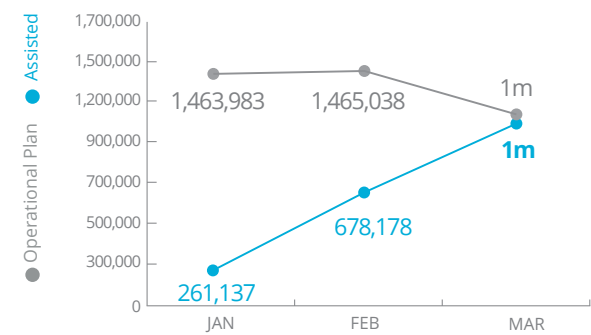


Democratic Republic of Congo

PEOPLE ASSISTED Interim Country Strategic Plan (2018-2020)



SOURCE: WFP, 20 MARCH 2018

FUNDING DR Congo Interim Country Strategic Plan (ICSP)

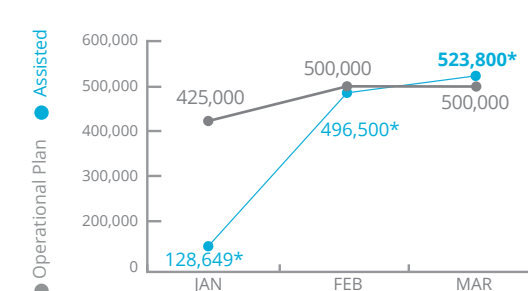
May - October 2018
US\$150.2m
Net funding requirement

2018 LEVEL 3 RESPONSE*
30% Received: USD77.7m
Requirement: USD 256.4m

*Only includes L3-specific components of ICSP

SOURCE: WFP, 27 APRIL 2018

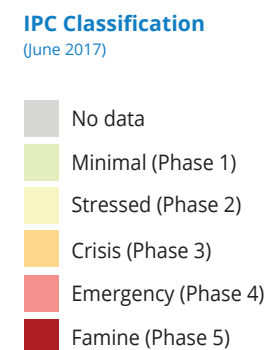
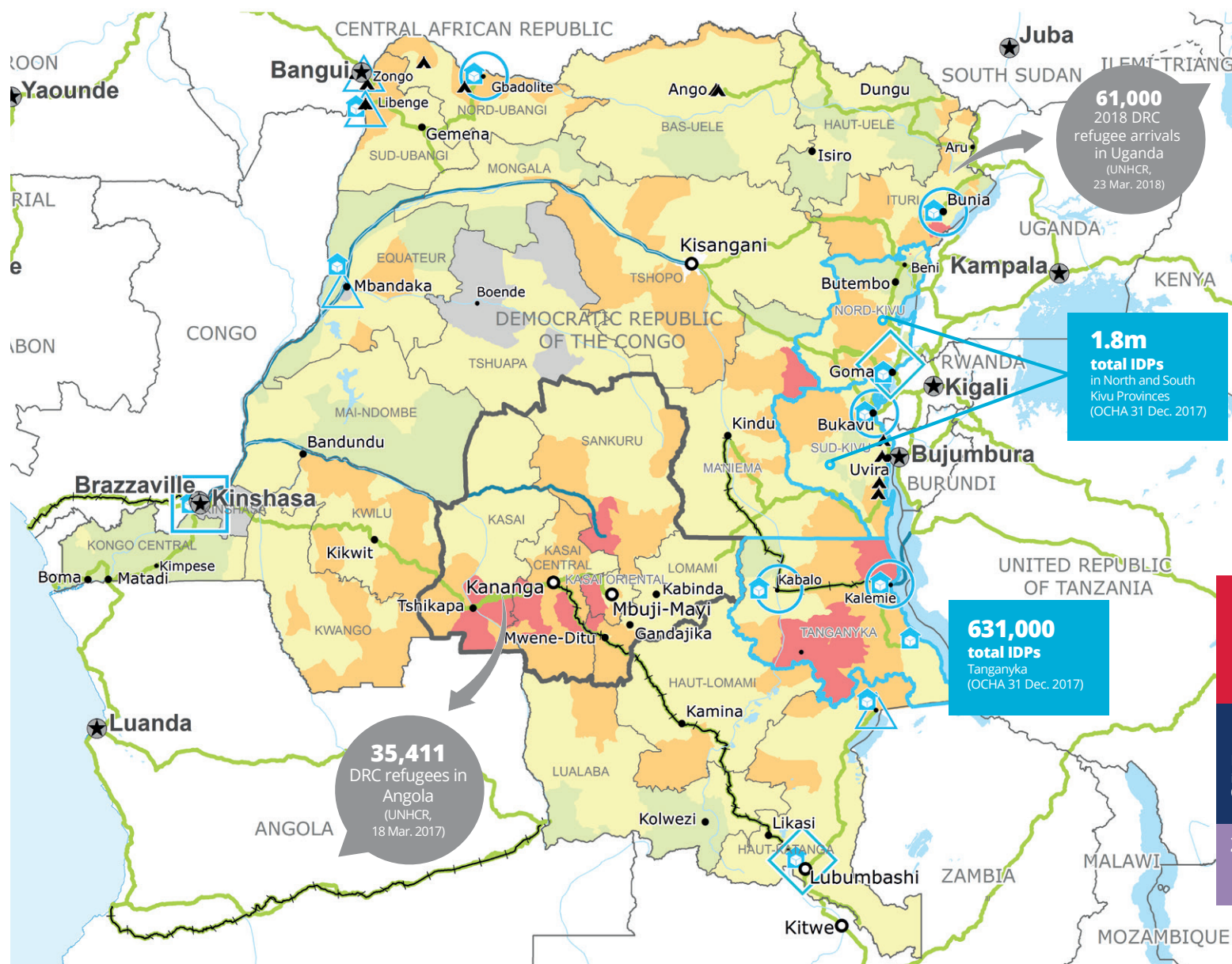
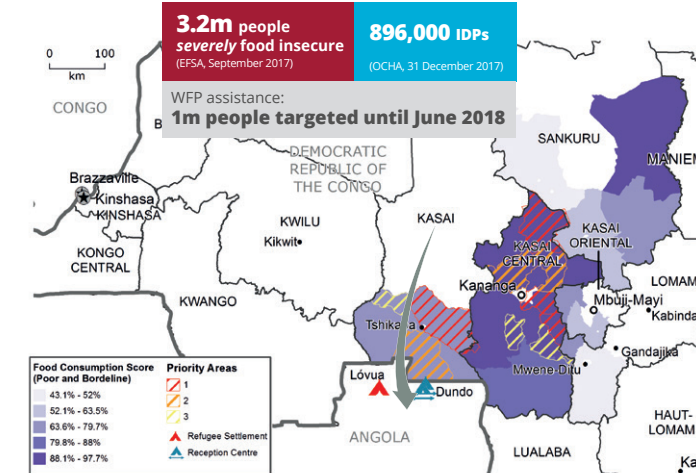
PEOPLE ASSISTED in Kasai



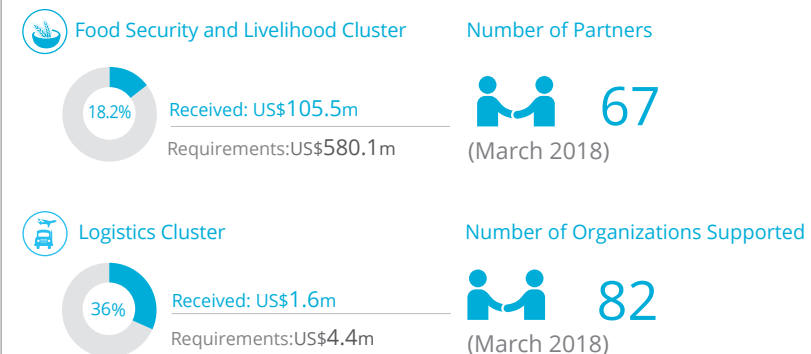
*Ration cuts in effect due to funding shortfalls

SOURCE: WFP, 16 APRIL 2018

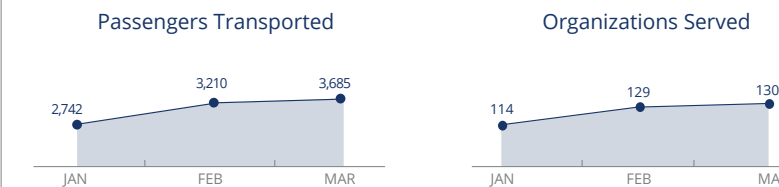
KASAI CRISIS Overview



WFP LED & CO-LED CLUSTERS



UN Humanitarian Air Service (UNHAS)



Sources: OCHA FTS, 27 APRIL 2018; WFP, 24 APRIL 2018

WFP LEVEL 3 EMERGENCY
SINCE 06 OCTOBER 2017 (LEVEL 2 EMERGENCY SINCE 12 DEC 2013)

For more information, see the SITUATION REPORT and COUNTRY BRIEF
www.wfp.org/countries/congo-democratic-republic

2A Interim Country Strategic Plan (2018-2020)

- Country Office
- Area Office
- Sub Office
- Field Office
- Warehouse
- Refugee Camp
- Road Supply Route
- Waterway Supply Route
- Railway Supply Route
- National Capital
- Major Town
- Intermediate Town
- Small Town
- International Boundary
- Province Boundary
- River
- Surface Waterbody

Sources: WFP, UNGIWG, GAUL, GLSC, OCHA, UNHCR, IPC.

The designations employed and the presentation of material in the map(s) do not imply the expression of any opinion on the part of WFP concerning the legal or constitutional status of any country, territory, city or sea, or concerning the delimitation of its frontiers or boundaries. © World Food Programme 2018.

Produced by the WFP Operations Centre (OPSCEN) jointly with Country Office and Regional Bureau Johannesburg. This dashboard is based on best available information at the time of production. Future updates may vary as new information becomes available.