



WFP Cameroon

Situation Report

NW/SW response #03

February 2019



In Numbers

4 regions mainly affected (North West, South West, Littoral and West)

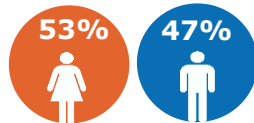
4 million people affected

1.5 million people in need of assistance

Highlights

- Although the security situation remains volatile and unpredictable, January distributions have been completed, reaching 42,233 beneficiaries with a full ration for 30 days.
- Partnership with the distributing partner Reach Out in the South West region is extended for two months (February and March 2019).
- Scale-up of operations plans to reach 135,000 beneficiaries monthly by June and 250,000 beneficiaries by December.

42,233 People assisted February 2019



GENDER MARKER 2A

Situation Update

- The security situation remains unstable and complex. 'Ghost town' and 'ten-day lockdown' over 5th-15th February in the Anglophone regions were observed to disrupt the activities of the National Youth Day planned for 11th February (to commemorate the plebiscite of 1961). The Mondays' ghost towns are maintained, but contradictory information are circulating on the possible resumption of lockdowns in the regions. A circulated lockdown was already programmed in Buea for Monday the 18th, Wednesday the 20th, Friday the 22nd and Saturday the 23rd. The diversity of non-state armed groups (over 12) makes the regional mapping difficult.
- At least 55 deaths were reported between 04th-08th February in SW/NW regions. While there were no WFP distributions during the lockdown, as discussions and meetings were delayed.
- Two SSAFE training sessions for UN staff in both regions are planned by UNDSS to be held by the end of April 2019.

WFP Response

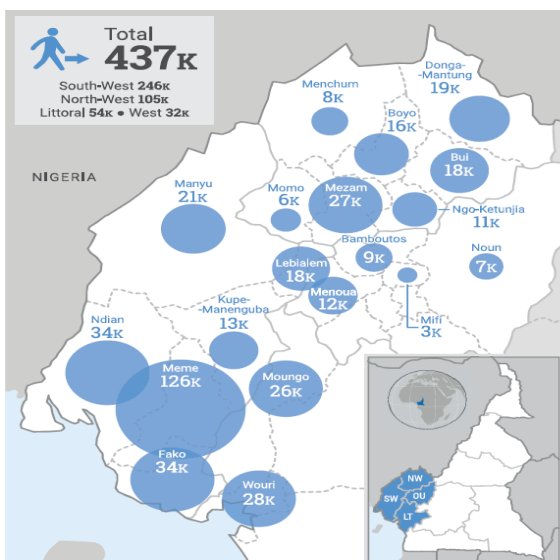
- A joint Regional Bureau Dakar and HQ support mission was conducted from 4th to 9th February to support the scale up of operations and strategy planning at a broader level. Operations are planned to reach 135,000 beneficiaries monthly by June and 250,000 beneficiaries by the end of the year in both regions.
- The new Head of Field office arrived in Buea on 29th January 2019.
- Partnership with the distributing partner Reach Out in the South West region is extended for two months (February and March 2019).

WFP Net Funding Requirements (March 2019 – August 2019)

Under Strategic Outcome 1; Activity 1

[Populations affected by NW/SW crisis have safe access to adequate and nutritious food.]

USD 11.7 million



IDPs affected by NW/SW crisis, OCHA SitRep January 2019
 Photo: Food distribution to IDPs in Meme, South West region.
 WFP/Cooperating Partner Reach Out Cameroon

- Preliminary results from the recently conducted Food Security assessments (EFSA and mVAM, including nutrition information) are available and will inform further targeting and prioritization of resources.
- There are growing discussions among humanitarian community to consider integrated distributions with cross-cutting goals and objectives. For instance, nutrition/health activities at food distribution sites in urban/peri-urban areas.

Food and Nutrition Assistance

- In January, WFP provided food and nutrition assistance to 42,233 IDPs (22,280 women and 19,953 men) in the South West and North West regions. They received a full 30-day ration of food basket consisting of rice (350g), salt (5g), Super Cereal (50g), pulses (100g) and vegetable oil (35g).
- February distributions initially planned for 50,000 beneficiaries (40,000 in Meme and 10,000 new beneficiaries in Fako) have been delayed due to the 10-day lockdown.

Supply Chain

- In total, 827.426mt of food including rice, salt, super cereals, pulses and vegetable oil were distributed this month.

Clusters and Common Services

Food Security Cluster

- The Food security cluster is now fully functional since the arrival of the coordinator in early January. Support from an IM officer is needed and FAO will soon recruit to endorse the position. Cluster Coordination meetings are held monthly, and 85 partners have been registered among which mainly local NGOs (39 Partners in NWR, 30 Partners in SWR & 16 partner organizations with a presence in both regions).

Logistics Cluster

- Awaiting the arrival of the Logical cluster mission to carry out a gaps analysis to assess the logistics needs of the humanitarian community and whether the activation of the Logistics Cluster should be maintained or be deactivated

Challenges and Constraints

- Difficulty in organising and coordinating truck movements in the areas due to insecurity and operational constraints, especially with the ghost town days
- Limited number of vehicles and resources continue to affect field office's capacity to monitor food distributions in the South West region (Kumba) and other field activities.

Contacts

- Frederick Martin, OIM Officer, frederick.martin@wfp.org
- Nelda Dassi, Volunteer Assistant, nelda.dassi@wfp.org
- For further information, visit the Cameroon page on www.wfp.org/countries/cameroon or follow our stories on Facebook <https://web.facebook.com/wfp.westafrica>

WFP NW/SW Response

	Scale-up requirements between January 2019 and June 2020 (in USD)	Total allocated contributions for scale-up in 2019 (in USD)	6 Months Net Funding Requirements (in USD)	Planned number of beneficiaries	Women	Men
General Food Distribution	48 million	9.4 million (23.5%)	11.7 million	400 000	208,000	192,000