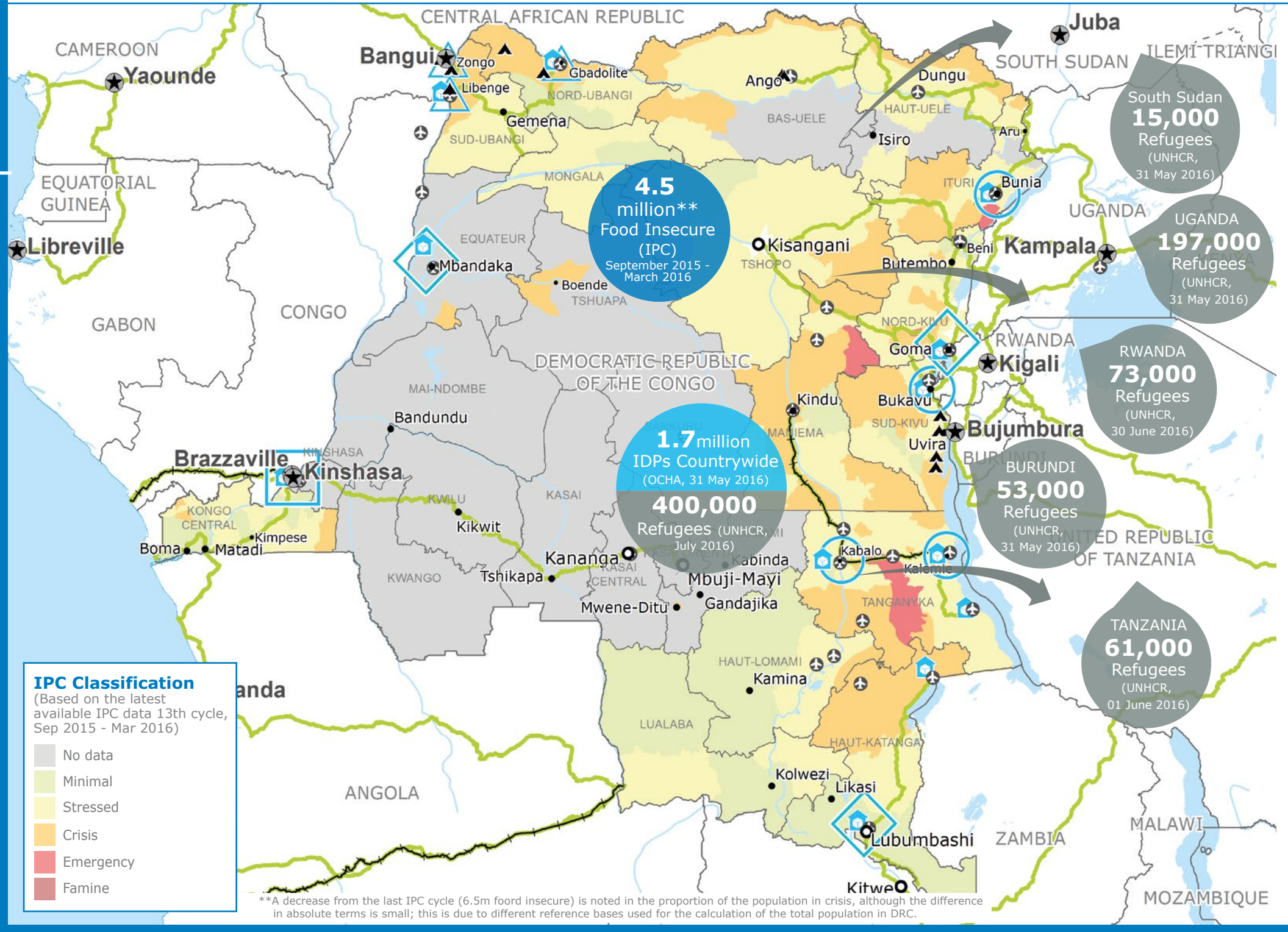


OPERATIONAL CHALLENGES

- Insecurity
- Humanitarian Access
- Resources



IPC Classification

(Based on the latest available IPC data 13th cycle, Sep 2015 - Mar 2016)

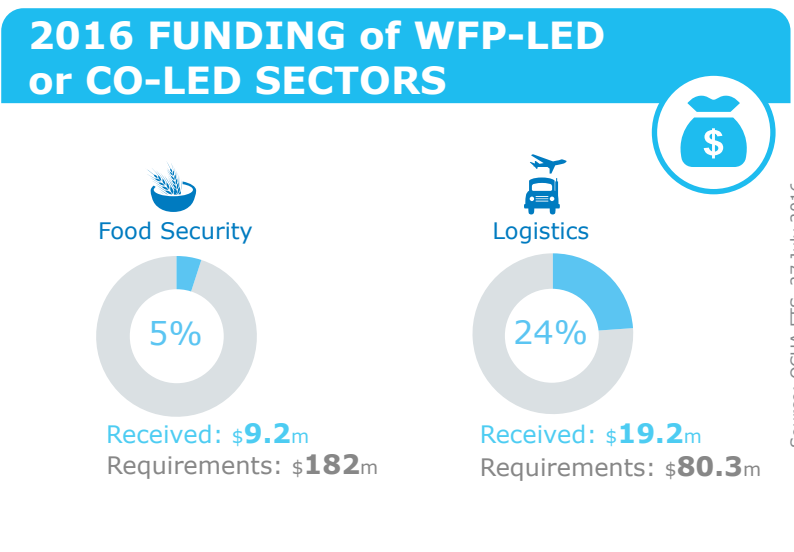
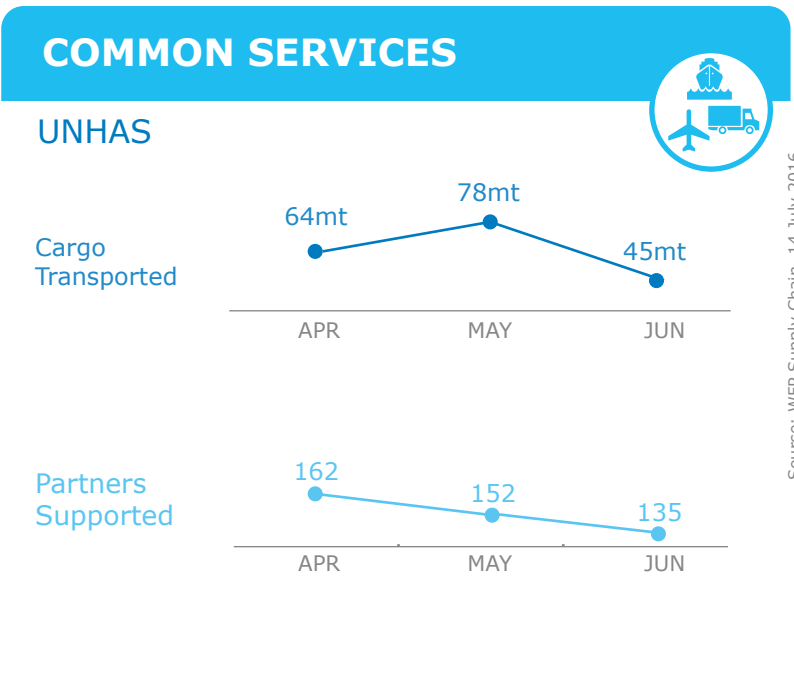
- No data
- Minimal
- Stressed
- Crisis
- Emergency
- Famine

- Country Office
- Field Office
- UNHAS Connection
- National Capital
- International Boundary
- Area Office
- Warehouse
- Road Supply Route
- Major Town
- Province boundary
- Intermediate Town
- River
- Small town
- Refugee Camp
- Surface Waterbody

Sources: WFP, UNGIWG, GAUL, GLSCS, OCHA, UNHCR, IPC

The designations employed and the presentation of material in the map(s) do not imply the expression of any opinion on the part of WFP concerning the legal or constitutional status of any country, territory, city or sea, or concerning the delimitation of its frontiers or boundaries.

© World Food Programme 2016



WFP LEVEL 2 EMERGENCY

SINCE 12 DECEMBER 2013

2A PRRO 200832

<http://documents.wfp.org/stellent/groups/public/documents/ep/WFP284303.pdf>

Check the **COUNTRY BRIEF**

<http://www.wfp.org/countries/congo-democratic-republic>

Produced by the WFP **Operations Centre (OPSCEN)** jointly with Country Office and Regional Bureau Johannesburg

This dashboard is based on best available information at the time of production. Future updates may vary as new information becomes available.