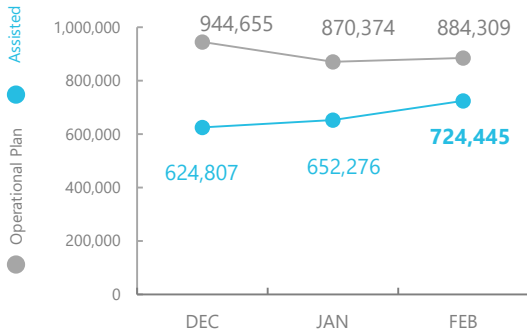
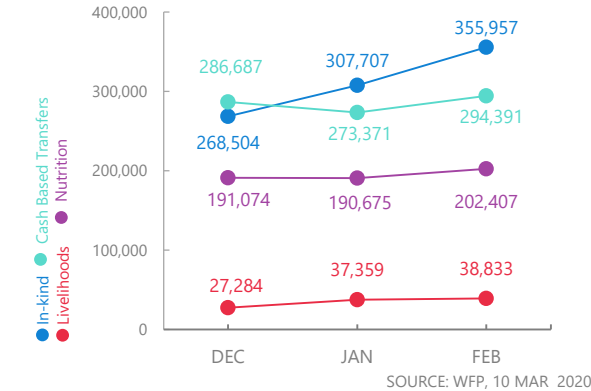


# Nigeria

## PEOPLE ASSISTED In Borno, Yobe and Adamawa States



## OPERATIONAL PROFILE By Activity



## FUNDING Nigeria Country Strategic Plan (CSP)

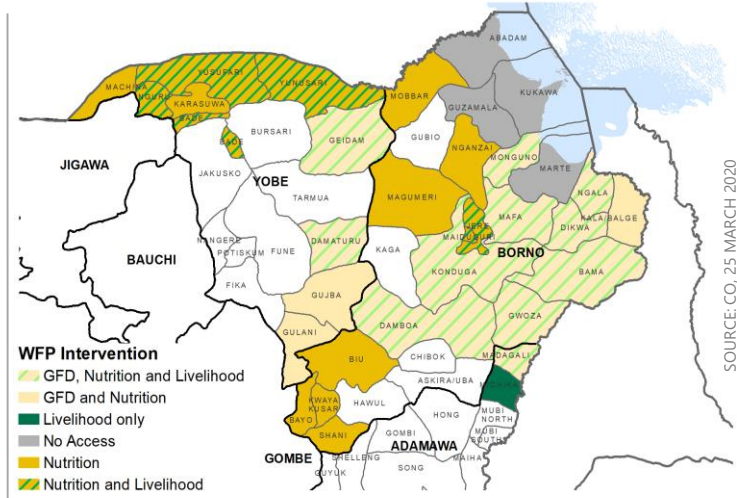
April – September 2020  
Net funding requirements

**us\$78m**

**2020 LEVEL 3 RESPONSE  
(Entire Country Strategic Plan)**  
Requirements: USD 288.3m  
Contributions: USD 175 m



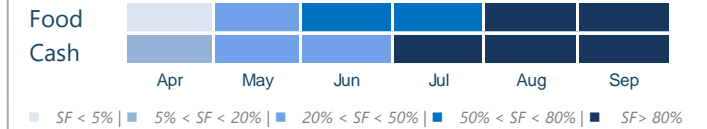
## WFP OPERATIONAL PRESENCE



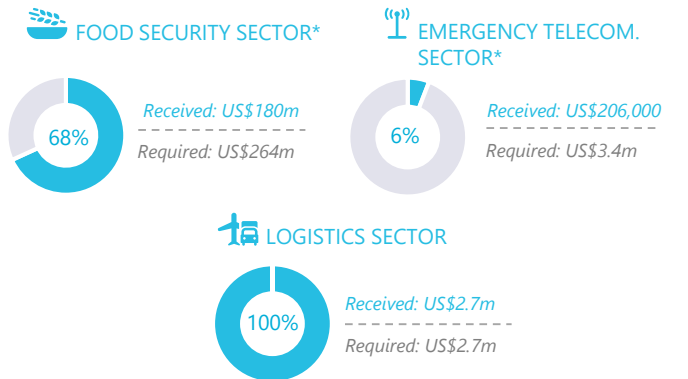
## AVERAGE MONTHLY FUNDING REQUIREMENTS



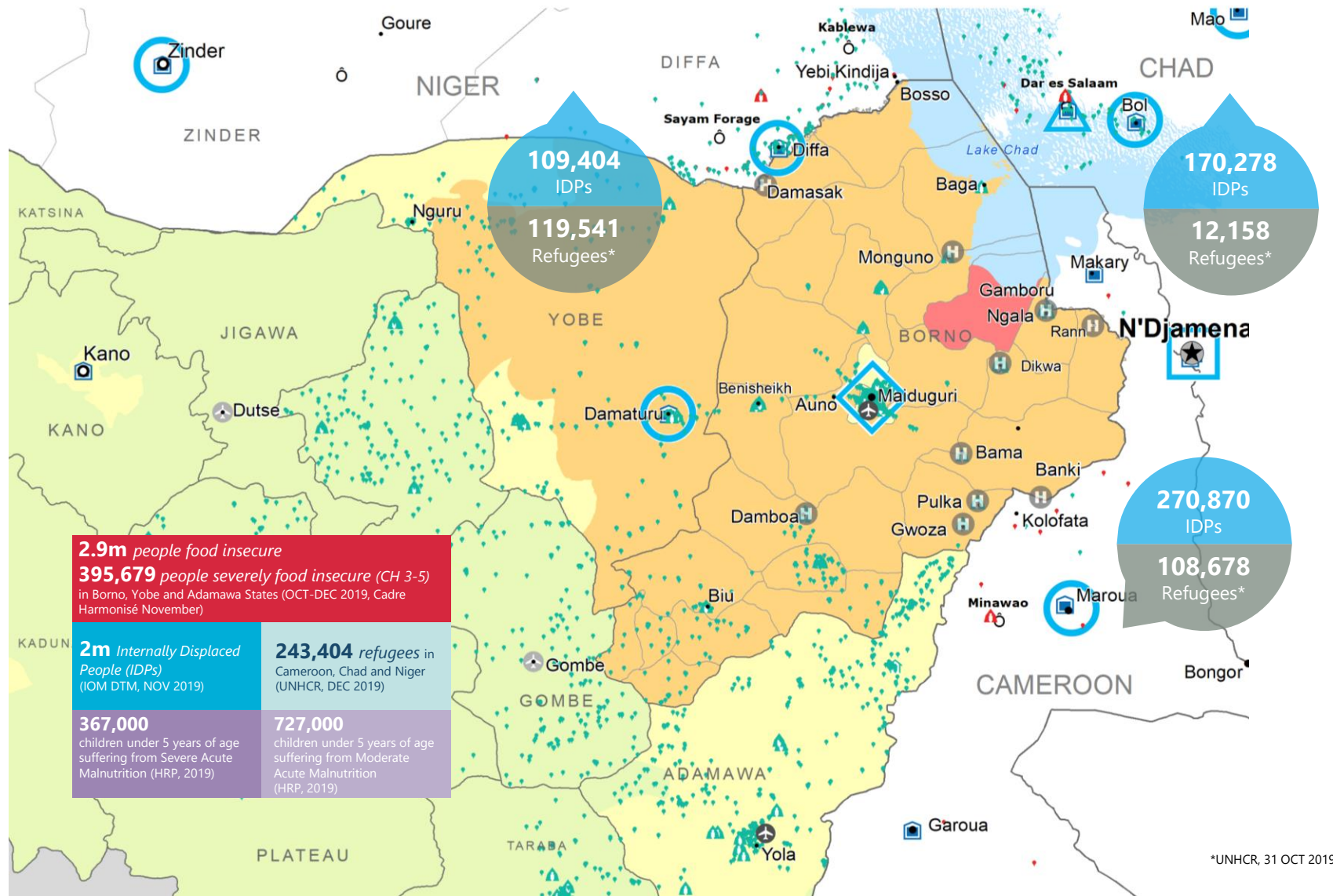
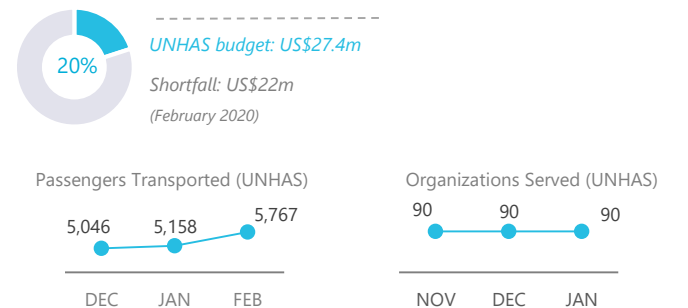
## EXPECTED SHORTFALLS



## WFP-LED AND CO-LED SECTORS



## UN HUMANITARIAN AIR SERVICE (UNHAS)



**2.9m** people food insecure  
**395,679** people severely food insecure (CH 3-5) in Borno, Yobe and Adamawa States (OCT-DEC 2019, Cadre Harmonisé November)

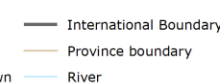
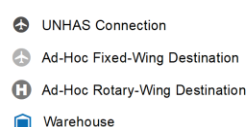
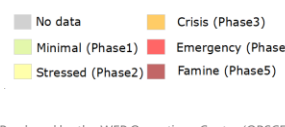
**2m** Internally Displaced People (IDPs) (IOM DTM, NOV 2019)

**243,404** refugees in Cameroon, Chad and Niger (UNHCR, DEC 2019)

**367,000** children under 5 years of age suffering from Severe Acute Malnutrition (HRP, 2019)

**727,000** children under 5 years of age suffering from Moderate Acute Malnutrition (HRP, 2019)

### CH Food Security Classification March - May 2020



Sources: WFP, UNGIWG, GAUL, GLSC, OCHA, UNHCR.

The designations employed and the presentation of material in the map(s) do not imply the expression of any opinion on the part of WFP. The delimitation of its frontiers or boundaries. © World Food Programme 2020.

## WFP LEVEL 3 EMERGENCY SINCE 11 AUGUST 2016

SITUATION REPORT and COUNTRY BRIEF

