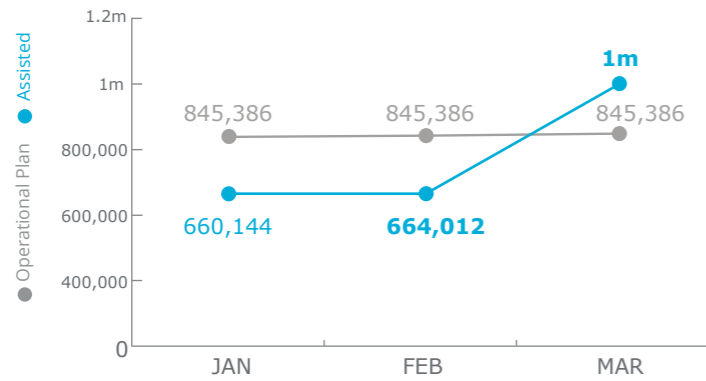


Iraq

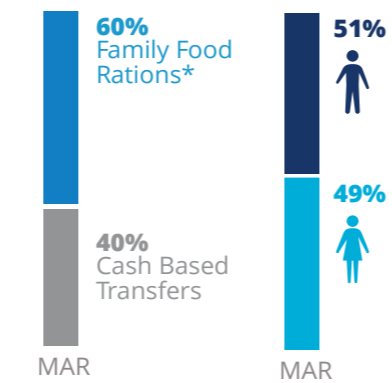
PEOPLE ASSISTED

Transitional Interim Country Strategic Plan



SOURCE: WFP, 23 APRIL 2018

OPERATIONAL PROFILE



*Displaced people reached with Immediate Response Rations are counted separately and are not included in the total monthly beneficiaries to avoid double counting, as they move on to receive Family Food Rations.

FUNDING

Iraq Transitional Interim Country Strategic Plan (2018-2020)

April - September 2018

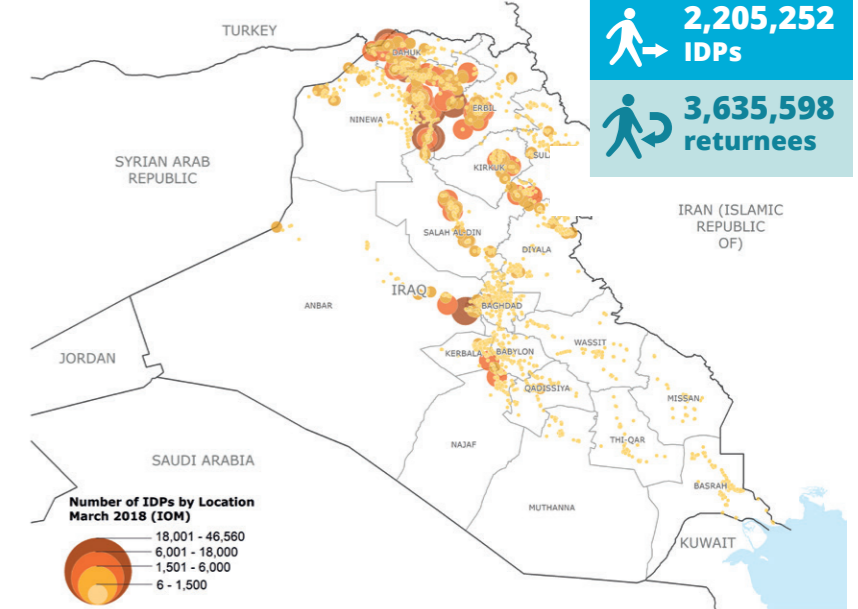
US\$ 46m
Net funding requirement*

* Does not include Strategic Outcome 5 of the T-ICSP (Provision of cluster services and common platforms)

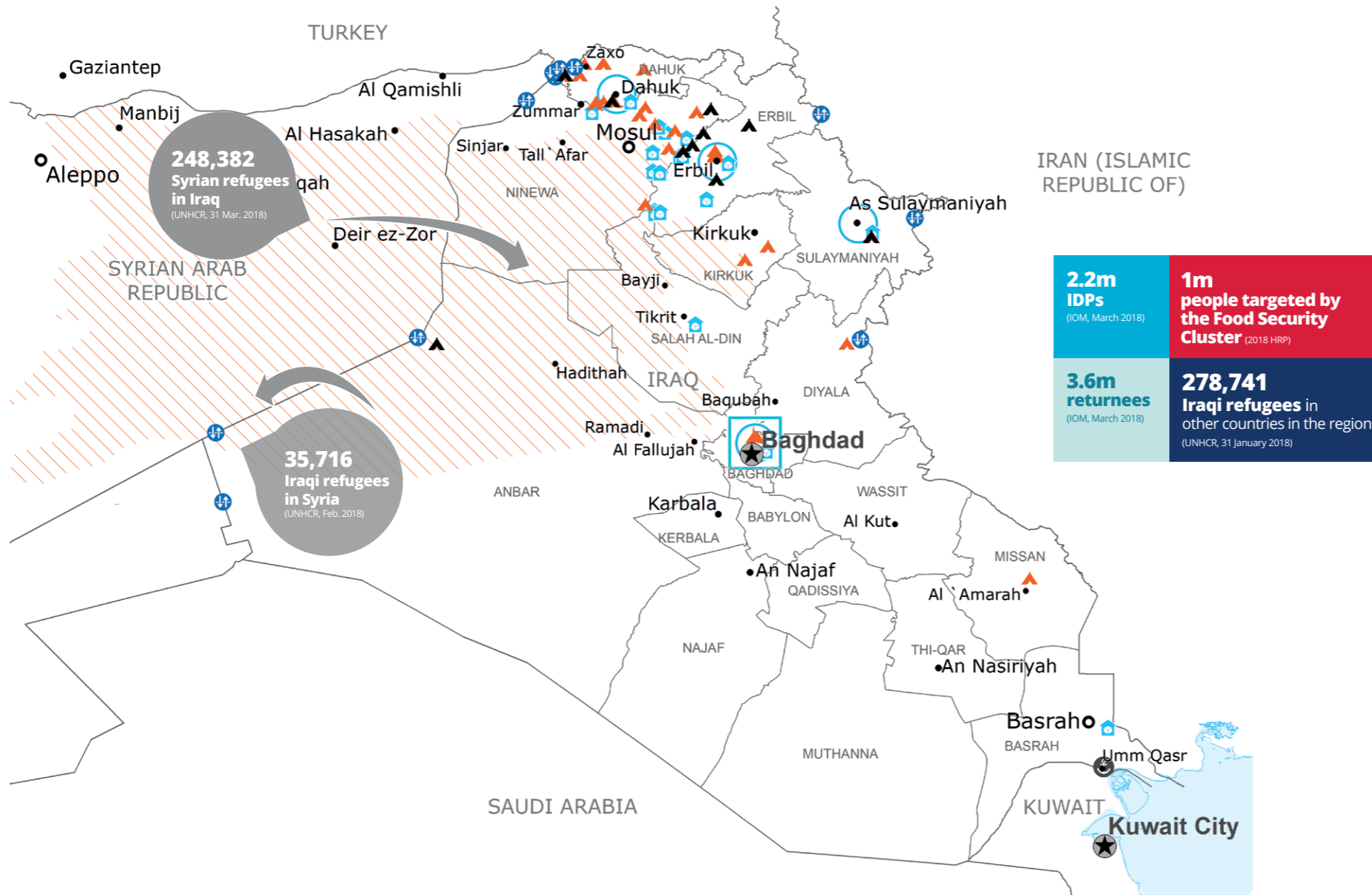
SOURCE: WFP, 23 APRIL 2018

IDPs BY LOCATION

AS OF 31 MARCH 2018



SOURCE: IOM DTM ROUND 92, MARCH 2018

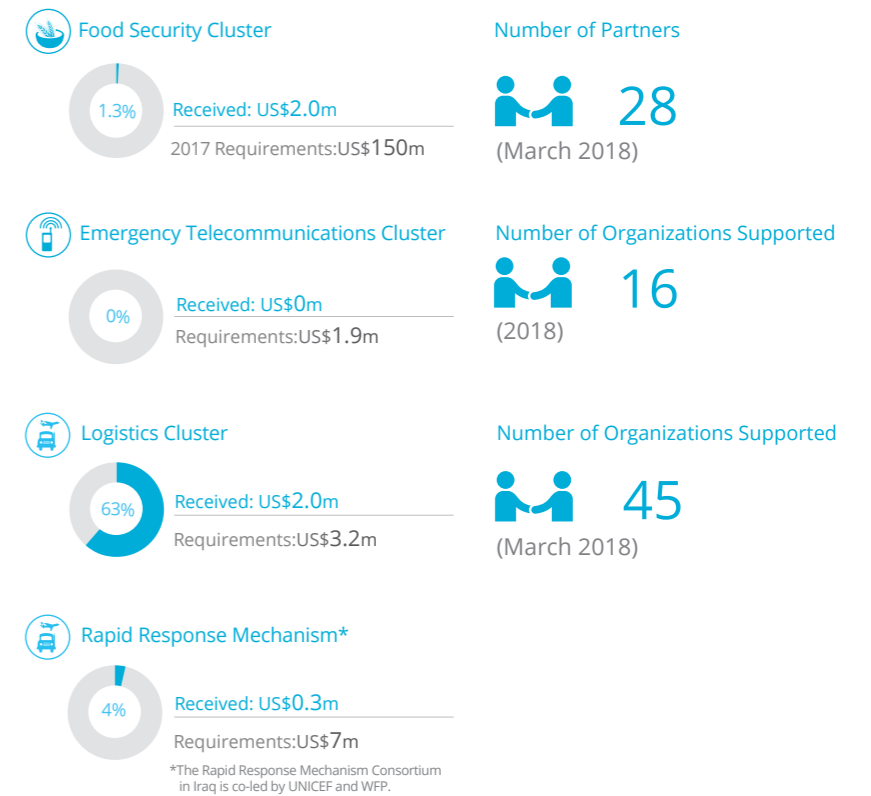


- Country Office
- Road Supply Route
- National Capital
- International Boundary
- Sub Office
- Waterway Supply Route
- Major Town
- Province Boundary
- Logistics Hub Planned
- UNHAS Route
- Intermediate Town
- Restricted Access Area
- Warehouse
- IDP Camp
- Small Town
- Border Crossing Point
- Refugee Camp

Sources: WFP, UNGIWG, GAUL, GLCSC, OCHA, UNHCR, IOM, INSO.

The designations employed and the presentation of material in the map(s) do not imply the expression of any opinion on the part of WFP concerning the legal or constitutional status of any country, territory, city or sea, or concerning the delimitation of its frontiers or boundaries. © World Food Programme 2018.

WFP LED & CO-LED CLUSTERS



SOURCE: OCHA FTS, 25 APRIL 2018; CLUSTERS, 11 APRIL 2018

WFP LEVEL 2 EMERGENCY
SINCE 30 NOVEMBER 2017 (LEVEL 3 EMERGENCY SINCE JUNE 2014)

For more information, see the SITUATION REPORT and COUNTRY BRIEF www.wfp.org/countries/iraq

1 Iraq Transitional Interim Country Strategic Plan

Produced by the WFP Operations Centre (OPSCEN) jointly with Country Office and Regional Bureau Cairo. This dashboard is based on best available information at the time of production. Future updates may vary as new information becomes available.