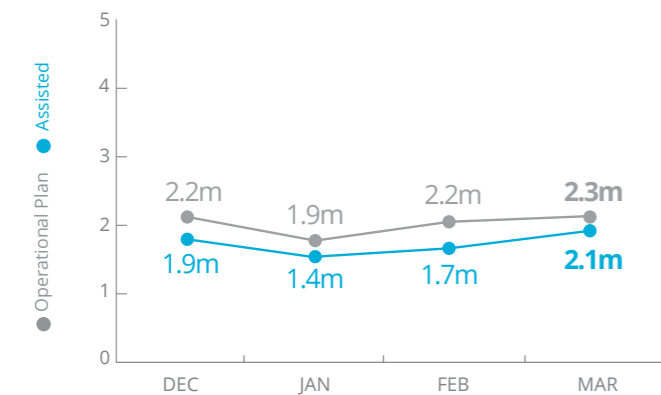


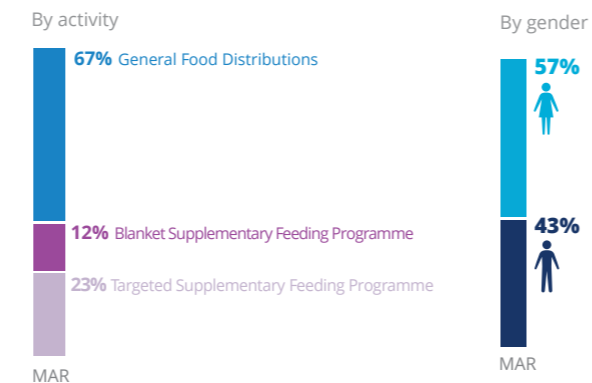
South Sudan

PEOPLE ASSISTED

South Sudan Interim Country Strategic Plan (ICSP)



OPERATIONAL PROFILE



Percentages of activities may include overlaps (i.e. beneficiaries that have been assisted with two or more different activities).

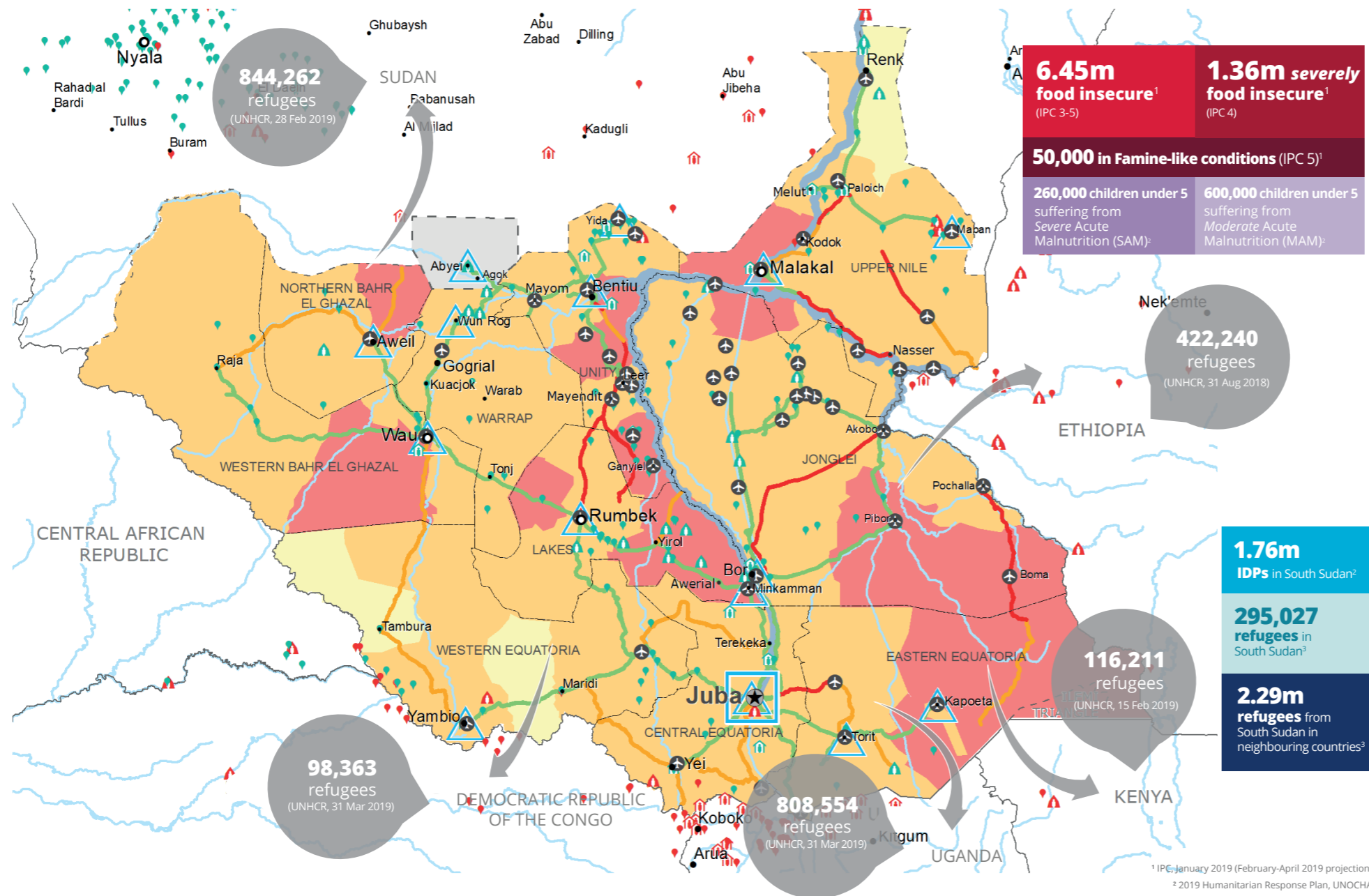
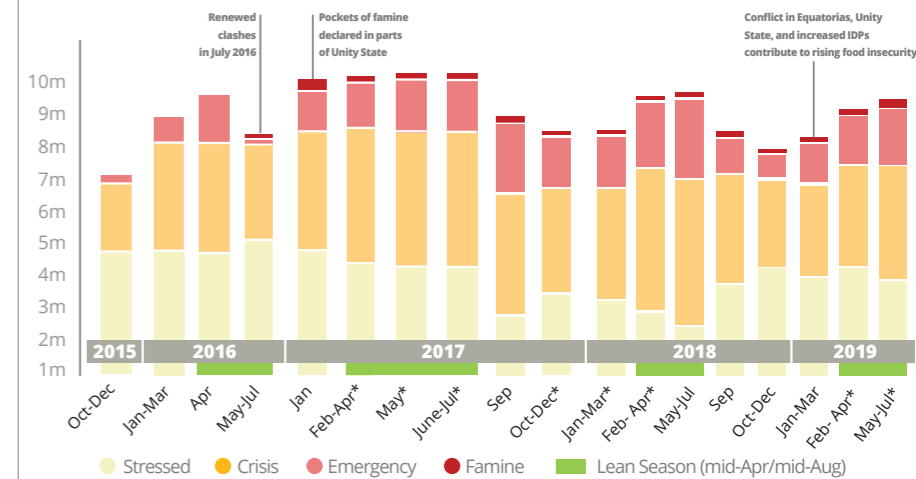
FUNDING

South Sudan Interim Country Strategic Plan (ICSP)

May - October 2019
Net funding requirement
USD 208.4m

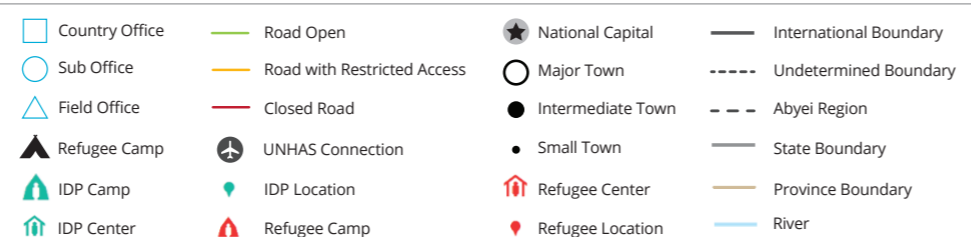
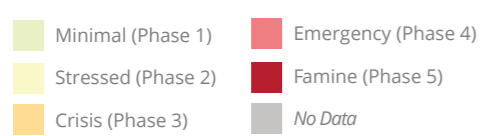
2019 LEVEL 3 RESPONSE
REQUIREMENTS: USD 959.9m

HISTORICAL FOOD INSECURITY (IPC)



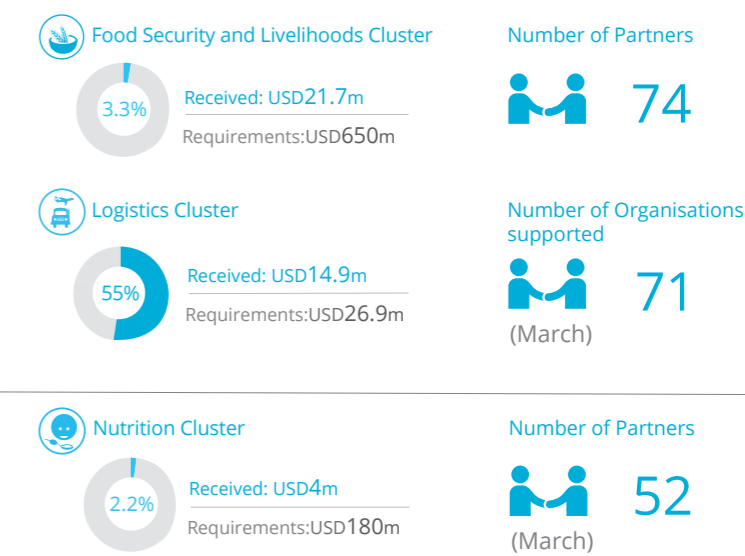
IPC Food Security Classification

January 2019

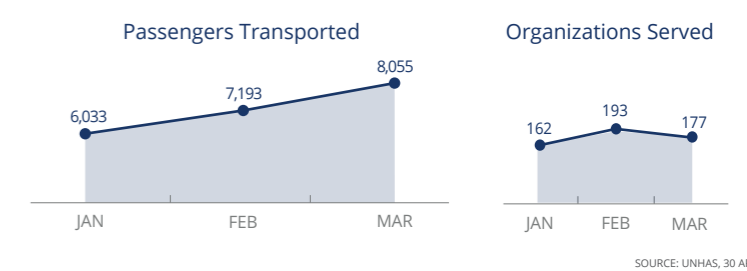


Sources: WFP, UNGIWG, GAUL, GLCSC, OCHA, UNHCR, Access Constraints Map, January 2019. The designations employed and the presentation of material in the map(s) do not imply the expression of any opinion on the part of WFP concerning the legal or constitutional status of any country, territory, city or sea, or concerning the delimitation of its frontiers or boundaries. © World Food Programme 2019.

WFP-LED AND SUPPORTED CLUSTERS



UN Humanitarian Air Service (UNHAS)



WFP LEVEL 3 EMERGENCY

SINCE 23 DECEMBER 2013

IASC LEVEL 3 EMERGENCY SINCE 1 JULY 2015

For more information, see the [SITUATION REPORT](#) and [COUNTRY BRIEF](#) www.wfp.org/countries/south-sudan

2A South Sudan Interim Country Strategic Plan
<http://documents.wfp.org/stellent/groups/public/documents/ep/WFP284303.pdf>

Produced by the WFP Operations Centre (OPSCEN) jointly with Country Office and Regional Bureau Nairobi. This dashboard is based on best available information at the time of production. Future updates may vary as new information becomes available.