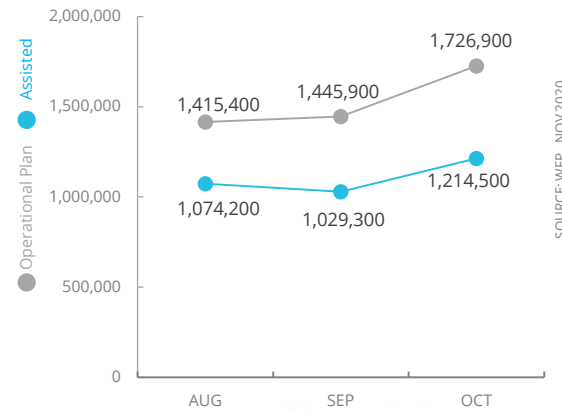


Democratic Republic of Congo

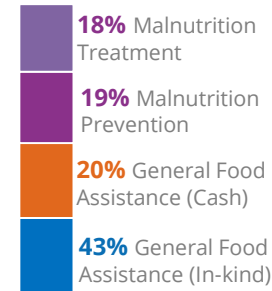
PEOPLE ASSISTED

DR Congo Interim Country Strategic Plan

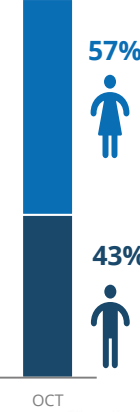


OPERATIONAL PROFILE

By Activity



By Gender



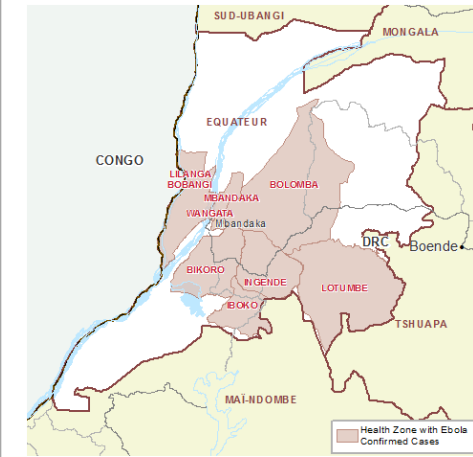
COVID-19 OPERATIONAL IMPACT

Status WFP Response adjusted

- Extended distribution timelines
- Crowd control and social distancing measures at distribution sites
- Mandatory hygiene measures at distribution sites
- School feeding through take home rations

Ongoing (green check), Partially Suspended (orange exclamation), Suspended (red X)

EBOLA OUTBREAK IN EQUATEUR PROVINCE (As of 18 Nov)



CASES
130 cases
55 deaths
75 survivors

11th DRC Ebola outbreak was officially declared over on 18 November 2020

FUNDING

DR Congo Country Strategic Plan (CSP)

December 2020 – May 2021

Net funding requirements

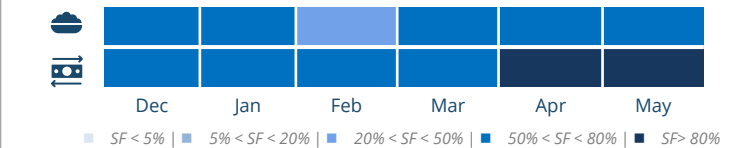
US\$176.8m

2020 LEVEL 3 RESPONSE Requirements **US\$ 575.7m**

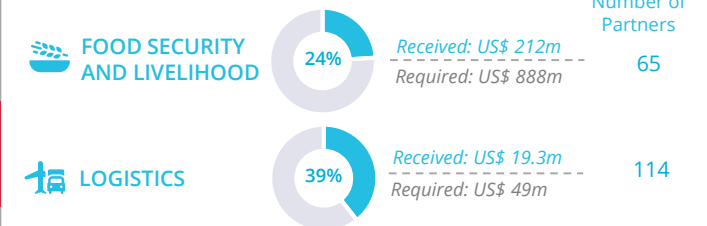
AVERAGE MONTHLY FUNDING REQUIREMENTS (US\$)

32.1m (CSP) | 17.0m (Level 3 Response)

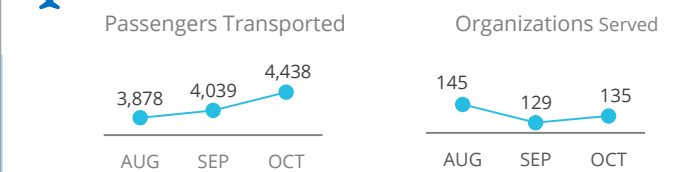
EXPECTED SHORTFALLS



WFP-LED AND SUPPORTED CLUSTERS



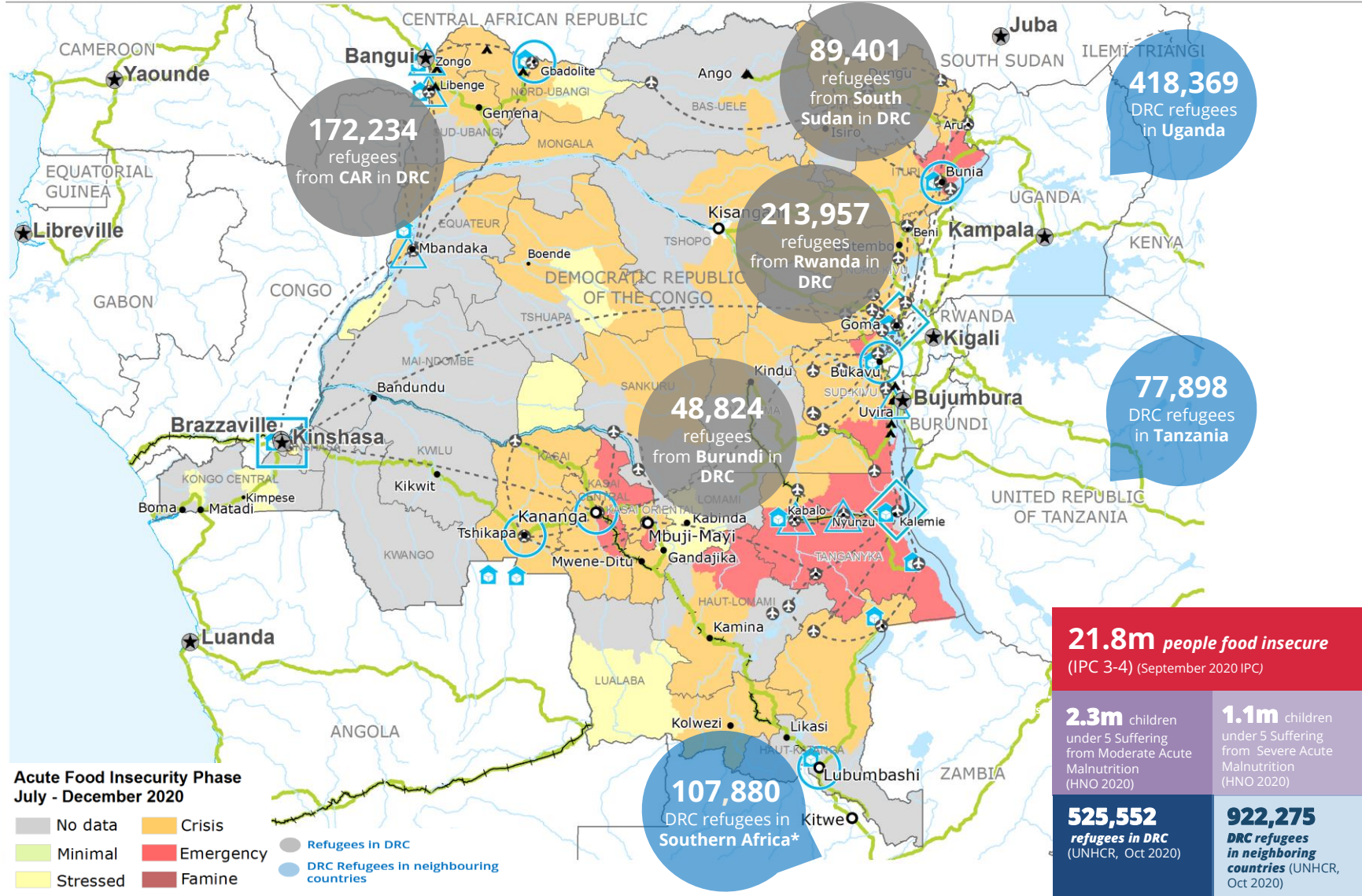
UN HUMANITARIAN AIR SERVICES (UNHAS)



WFP LEVEL 3 EMERGENCY

SITUATION REPORT and COUNTRY BRIEF

Gender and Age Marker **3**



* Includes Botswana, Eswatini, Lesotho, Madagascar, Malawi, Namibia, South Africa and Zimbabwe.
Sources: WFP, UNGI/WG, GAUL, GLCSC, OCHA, UNHCR, IPC.
The designations employed and the presentation of material in the map(s) do not imply the expression of any opinion on the part of WFP concerning the legal or constitutional status of any country, territory, city or sea, or concerning the delimitation of its frontiers or boundaries.
© World Food Programme 2020.

