

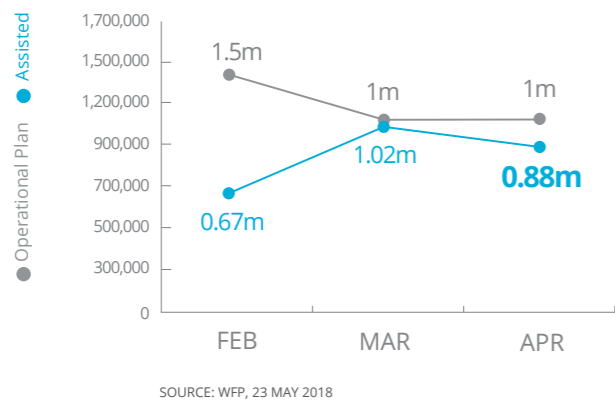


World Food Programme

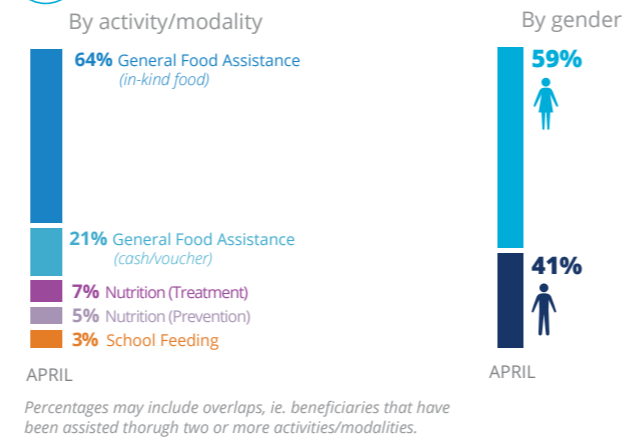
Democratic Republic of Congo

PEOPLE ASSISTED

DR Congo Interim Country Strategic Plan (ICSP)

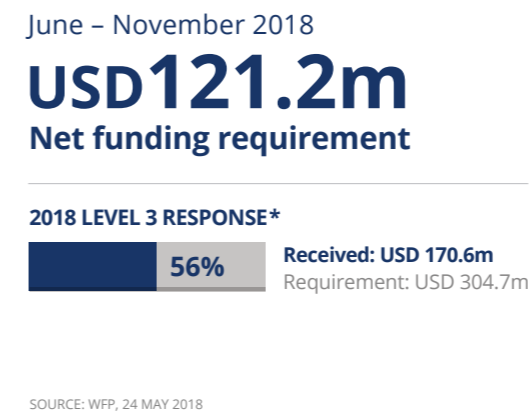


OPERATIONAL PROFILE



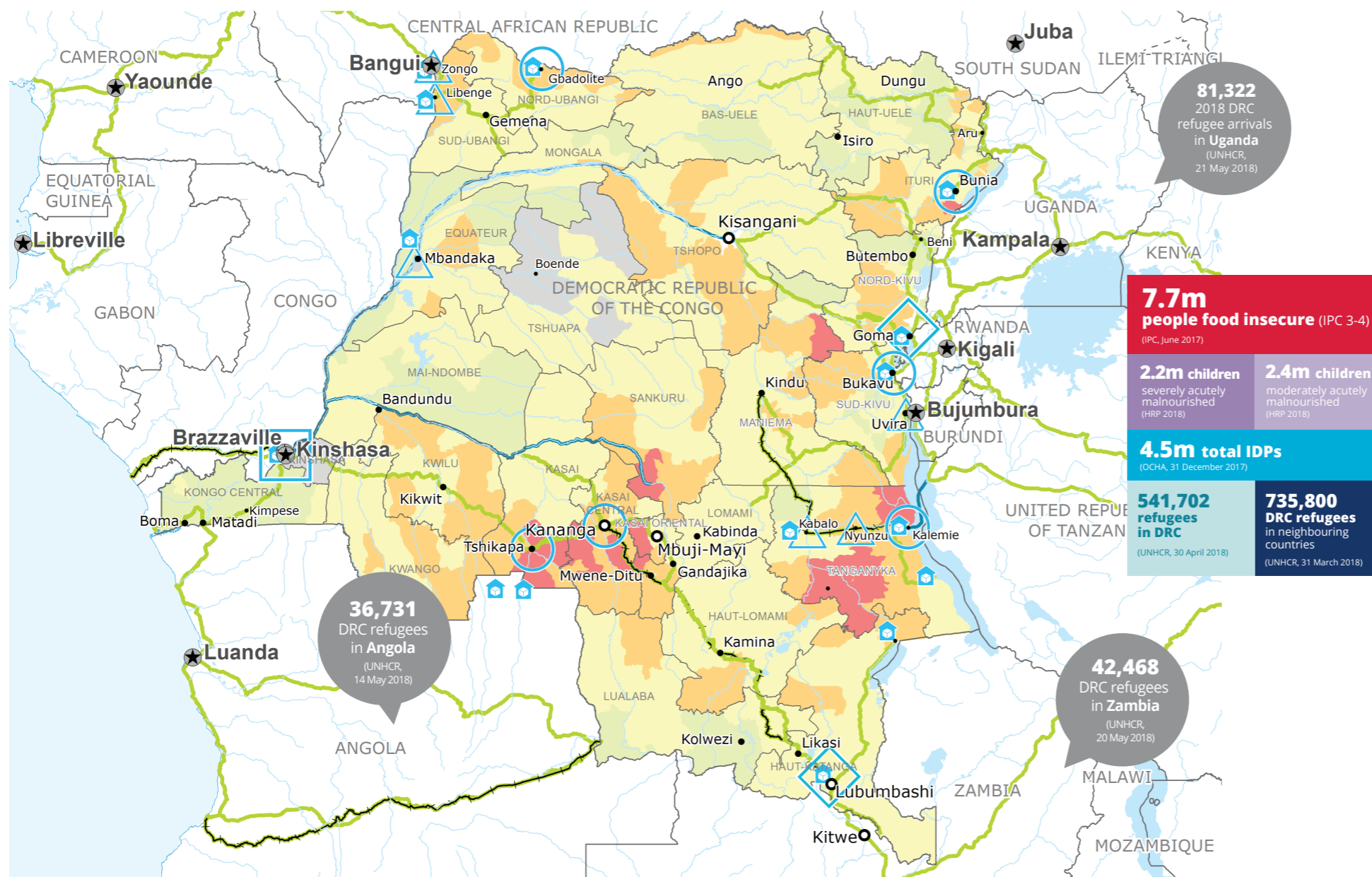
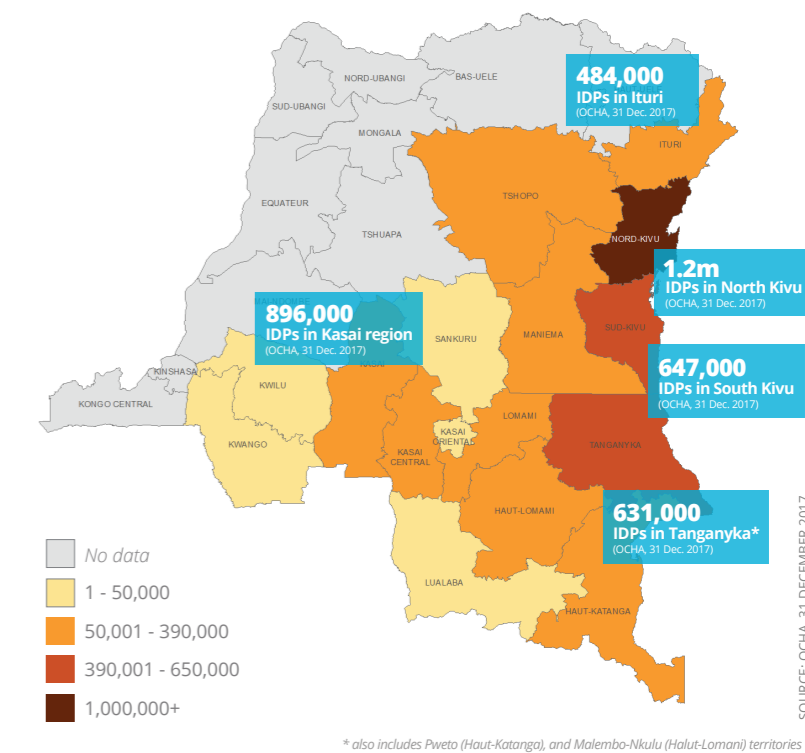
FUNDING

DR Congo Interim Country Strategic Plan (ICSP)

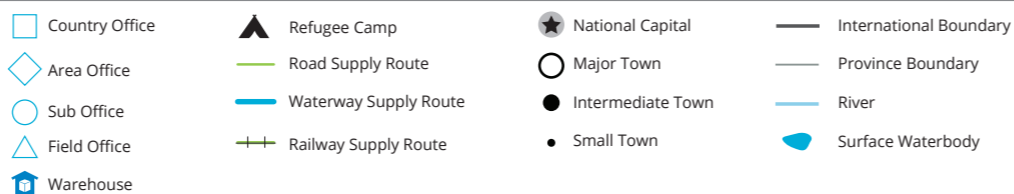
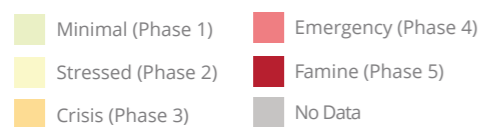


INTERNAL DISPLACEMENT BY PROVINCE

AS OF 31 DECEMBER 2017



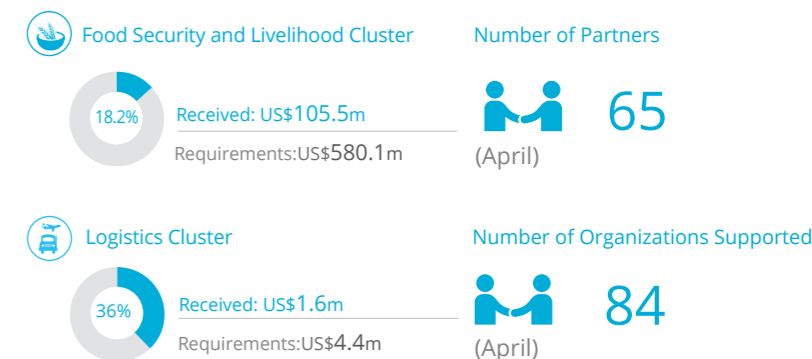
IPC Food Security Classification (June 2017)



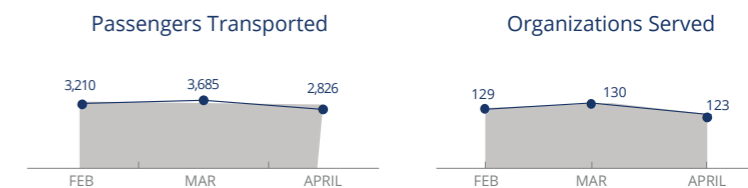
Sources: WFP, UNGIWI, GAUL, GLCSO, OCHA, UNHCR, IPC.

The designations employed and the presentation of material in the map(s) do not imply the expression of any opinion on the part of WFP concerning the legal or constitutional status of any country, territory, city or sea, or concerning the delimitation of its frontiers or boundaries. © World Food Programme 2018.

WFP LED & CO-LED CLUSTERS



UN Humanitarian Air Service (UNHAS)



SOURCES: OCHA FTS, 28 MAY 2018; CO, 16 MAY 2018; CLUSTERS, 20 APRIL 2018

WFP LEVEL 3 EMERGENCY

SINCE 06 OCTOBER 2017 (LEVEL 2 EMERGENCY SINCE 12 DEC 2013)

For more information, see the SITUATION REPORT and COUNTRY BRIEF www.wfp.org/countries/congo-democratic-republic

2A Interim Country Strategic Plan (2018-2020)

Produced by the WFP Operations Centre (OPSCEN) jointly with Country Office and Regional Bureau Johannesburg. This dashboard is based on best available information at the time of production. Future updates may vary as new information becomes available.