



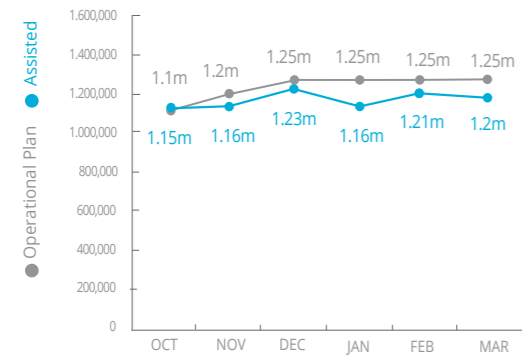
World Food Programme

Emergency Dashboard | April 2018

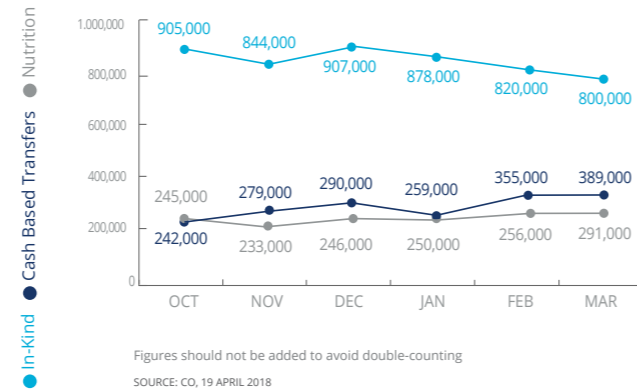
SAVING LIVES
CHANGING LIVES

Nigeria

PEOPLE ASSISTED Regional Emergency Operation 200777



OPERATIONAL PROFILE by Activity



FUNDING Nigeria component of Regional Emergency Operation 200777

May - October 2018
Net funding requirement **USD76.1m***

2018 LEVEL 3 RESPONSE
44% Received: USD70.3m
Requirement: USD161.5m

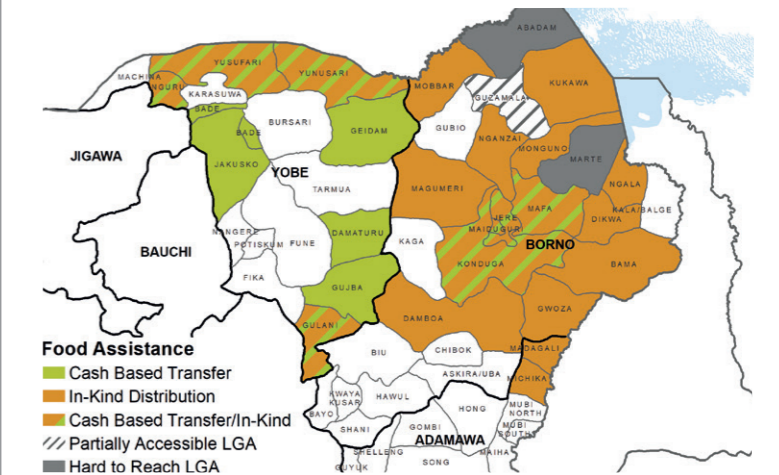
Regional Special Operation 200834
UN Humanitarian Air Services (UNHAS) Nigeria
51% Received: USD7.5m
2018 Requirement: USD14.7m

Special Operation 201032
Logistics and Emergency Telecommunications Sectors
21% Received: USD1.2m
2018 Requirement: USD5.8m

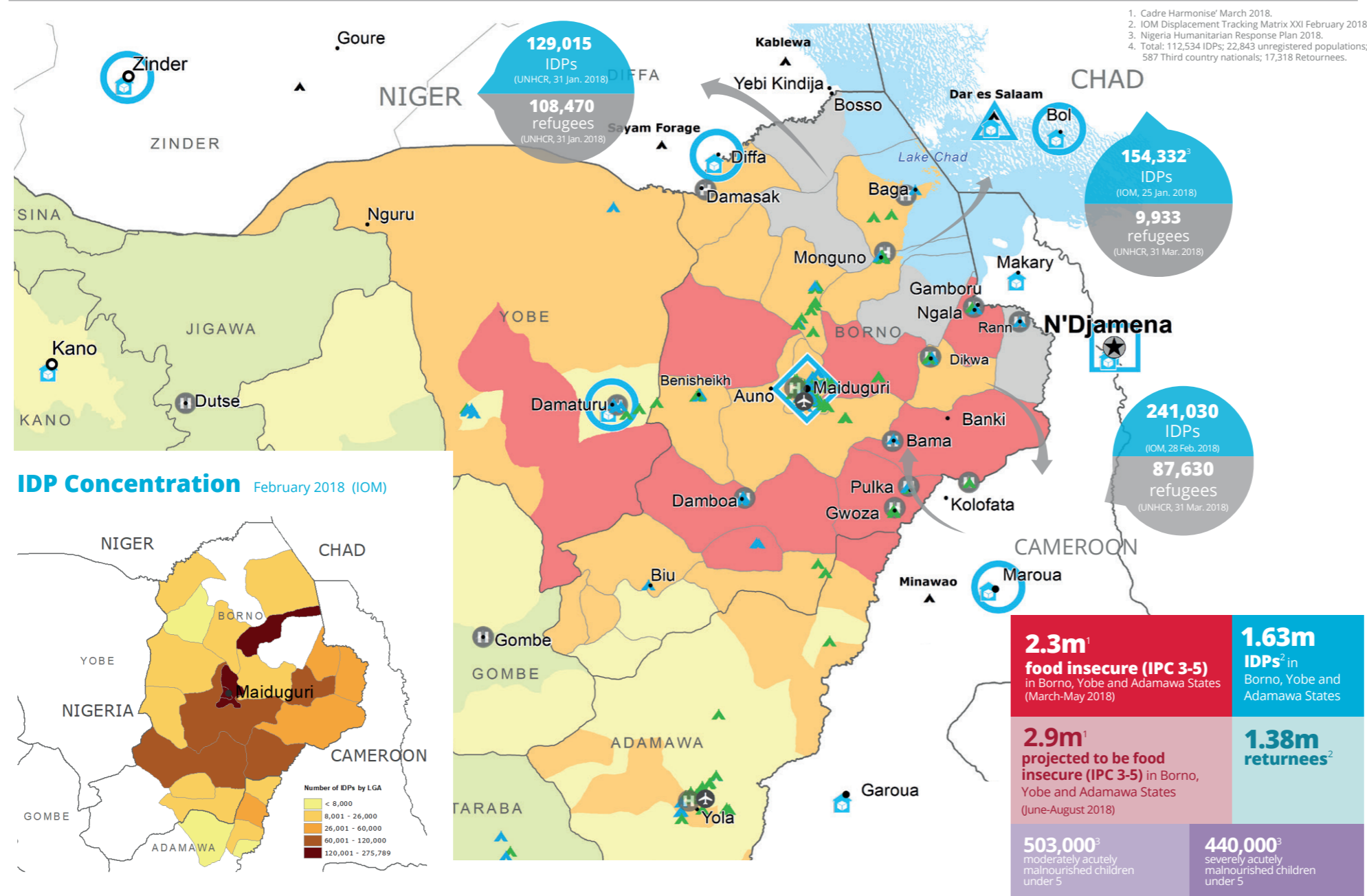
* Including outstanding advances recorded at regional level for Nigeria.

SOURCE: PGGIRMO, 24 APRIL 2018

WFP OPERATIONAL PRESENCE AND FOOD ASSISTANCE MODALITIES

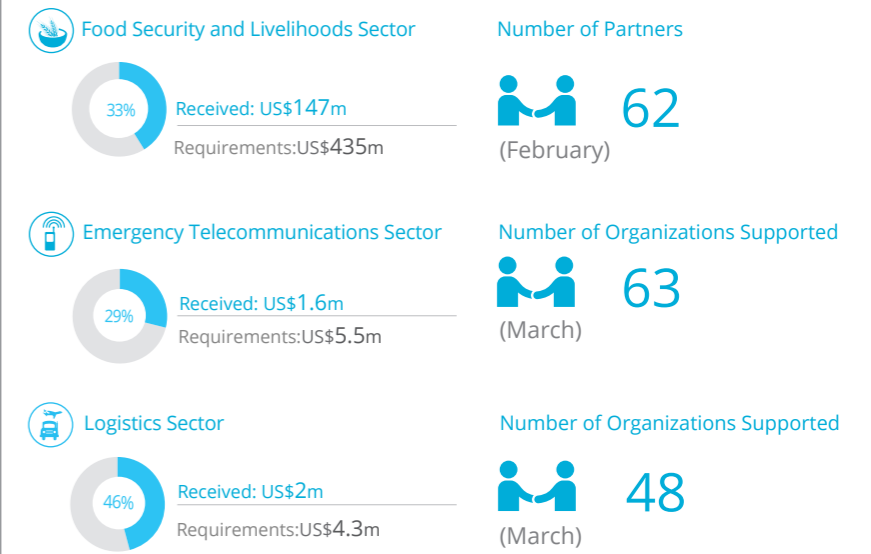


Source: WFP, 01 February 2018

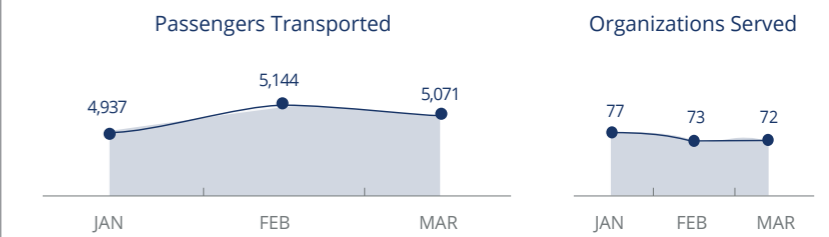


- Cadre Harmonise' March 2018.
- IOM Displacement Tracking Matrix XXI February 2018.
- Nigeria Humanitarian Response Plan 2018.
- Total: 112,534 IDPs; 22,843 unregistered populations; 587 Third country nationals; 17,318 Returnees.

WFP LED & CO-LED SECTORS



UN Humanitarian Air Service (UNHAS)



Sources: OCHA FTS, 24 April 2018; Clusters 25 April 2018

WFP LEVEL 3 EMERGENCY
SINCE 11 AUGUST 2016

For more information, see the SITUATION REPORT and COUNTRY BRIEF www.wfp.org/countries/nigeria

2A Regional Emergency Operation 200777
<http://documents.wfp.org/stellent/groups/public/documents/ep/WFP284303.pdf>

Produced by the WFP Operations Centre (OPSCEN) jointly with Country Office and Regional Bureau Dakar. This dashboard is based on best available information at the time of production. Future updates may vary as new information becomes available.

CH Classification (projected June-August 2018)

- No data
- Minimal (Phase 1)
- Stressed (Phase 2)
- Crisis (Phase 3)
- Emergency (Phase 4)
- Famine (Phase 5)

Operational Profile Legend

- Country Office
- Area Office
- Sub Office
- Field Office
- Warehouse
- Refugee Camp
- IDP Camp
- IDP Collective Center
- UNHAS Connection
- Ad-Hoc Rotary-Wing Destination
- National Capital
- Major Town
- Intermediate Town
- International Boundary
- Region Boundary

Sources: WFP, UNGIWG, GAUL, GLCSC, OCHA, UNHCR.

The designations employed and the presentation of material in the map(s) do not imply the expression of any opinion on the part of WFP concerning the legal or constitutional status of any country, territory, city or sea, or concerning the delimitation of its frontiers or boundaries. © World Food Programme 2018.