



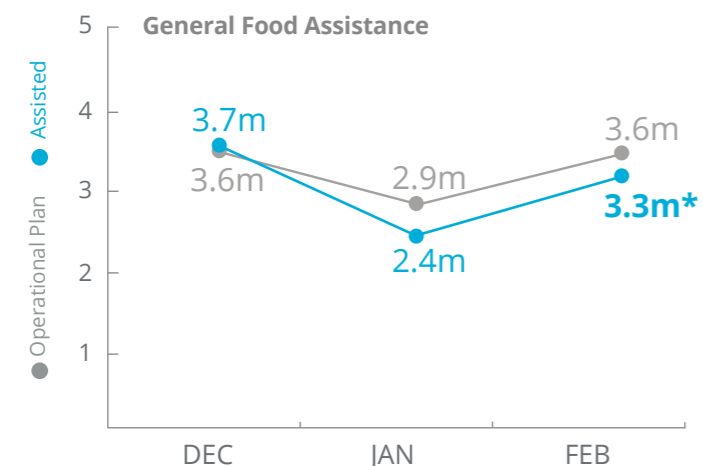
World Food Programme

Syria



PEOPLE ASSISTED

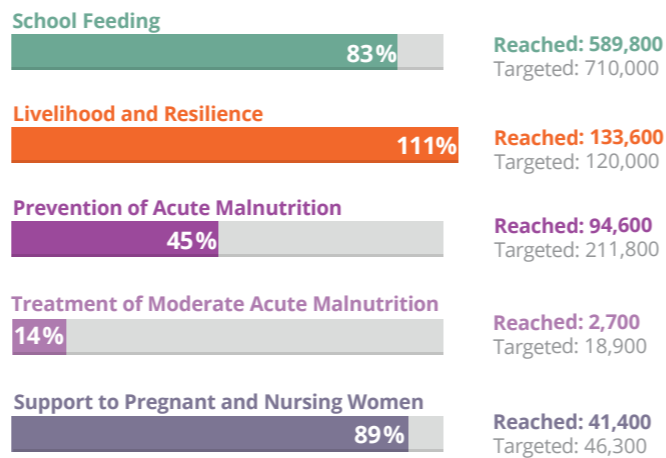
Syria Transitional Interim Country Strategic Plan (T-ICSP)



*BASED ON DISPATCHES SOURCE: WFP, 28 MARCH 2019

OTHER ACTIVITIES

February 2019



FUNDING

Syria Transitional Interim Country-Strategic Plan (T-ICSP)

April – September 2019

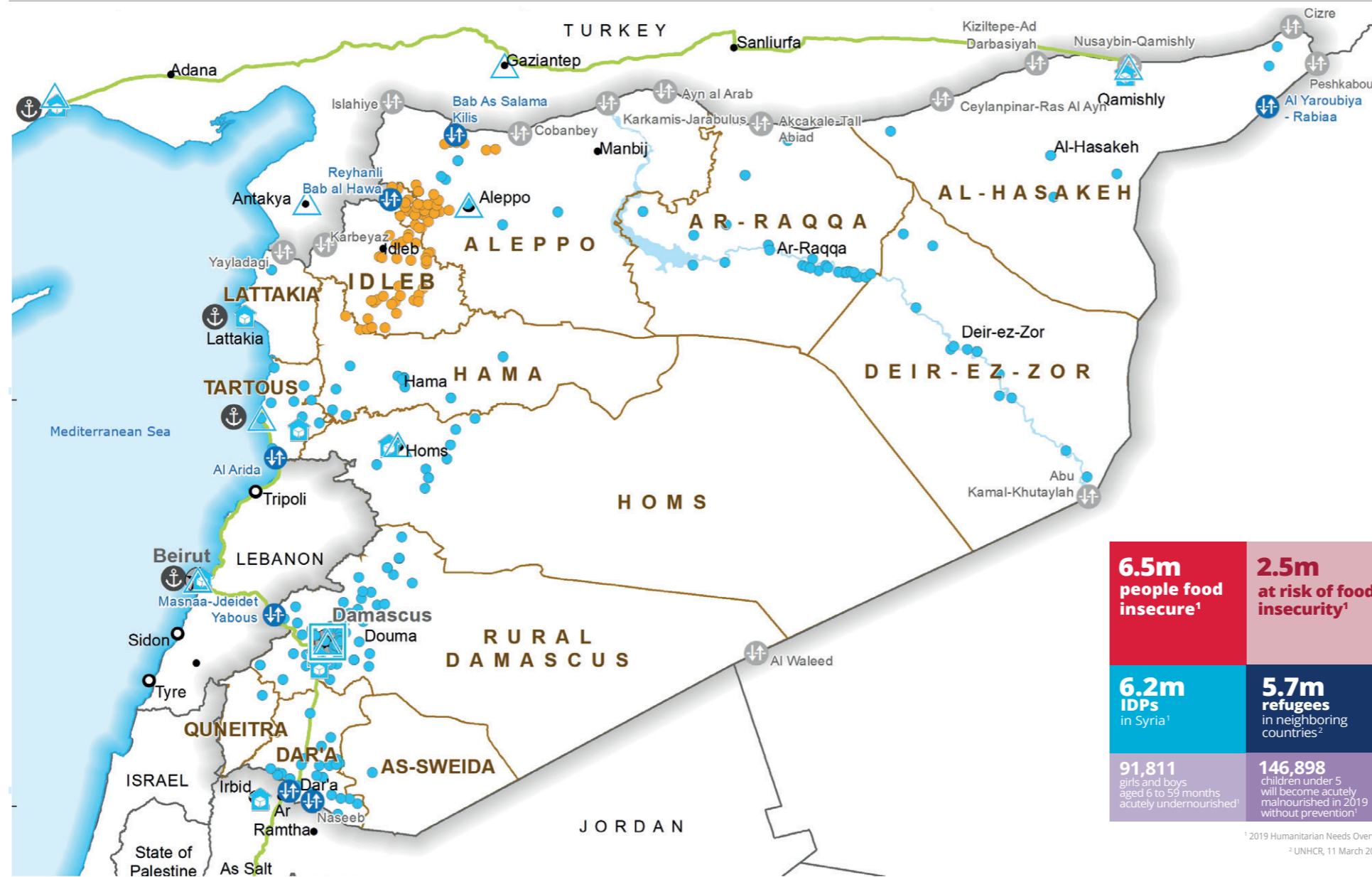
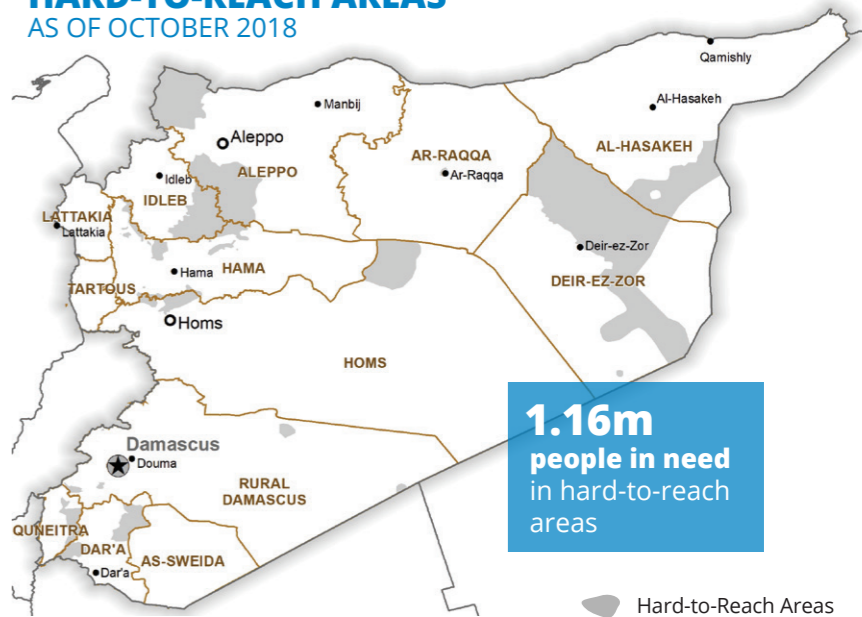
Net funding requirement

US\$129.7m

2019 LEVEL 3 RESPONSE REQUIREMENTS: US\$737.8m

SOURCE: WFP, 01 APRIL 2019

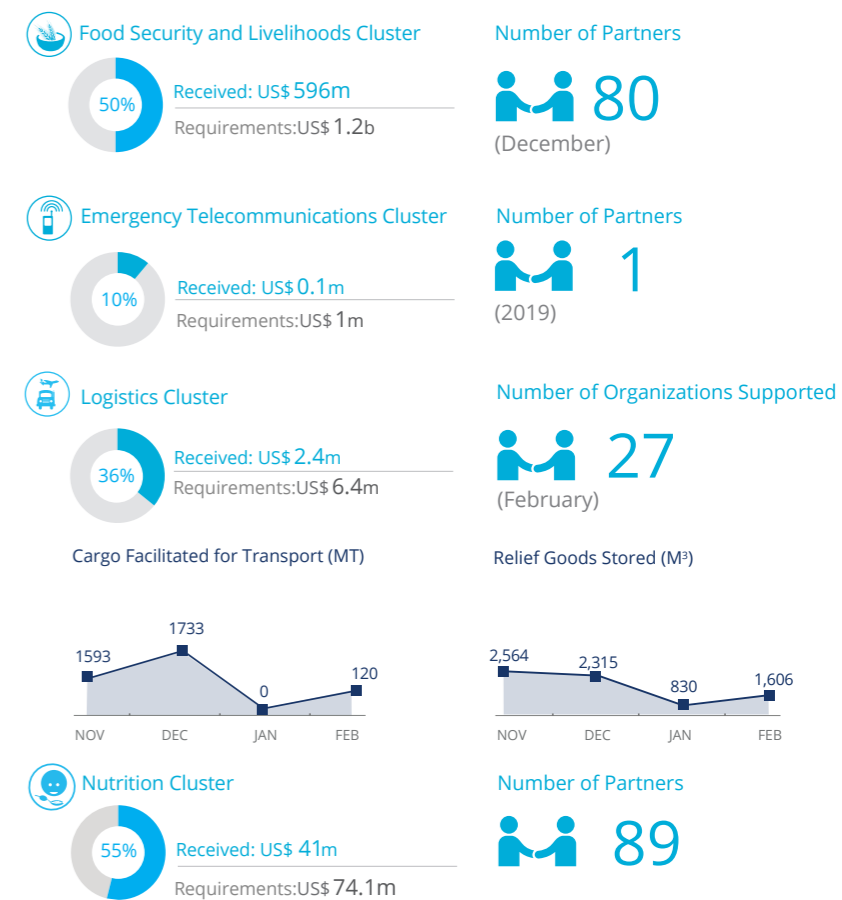
HARD-TO-REACH AREAS AS OF OCTOBER 2018



6.5m people food insecure ¹	2.5m at risk of food insecurity ¹
6.2m IDPs in Syria ¹	5.7m refugees in neighboring countries ²
91,811 girls and boys aged 6 to 59 months acutely undernourished ¹	146,898 children under 5 will become acutely malnourished in 2019 without prevention ¹

¹ 2019 Humanitarian Needs Overview
² UNHCR, 11 March 2019

WFP-LED AND SUPPORTED CLUSTERS



SOURCES: OCHA FTS, 04 MARCH 2019; CLUSTERS, 04 MARCH 2019

WFP LEVEL 3 EMERGENCY SINCE 14 DECEMBER 2012

IASC LEVEL 3 EMERGENCY SINCE 15 JANUARY 2013

For more information, see the SITUATION REPORT and COUNTRY BRIEF www.wfp.org/countries/syria

2A Syria Transitional Interim Country Strategic Plan <http://documents.wfp.org/stellent/groups/public/documents/ep/WFP284303.pdf>

Produced by the WFP Operations Centre (OPSCEN) jointly with Country Office and Regional Bureau Cairo. This dashboard is based on best available information at the time of production. Future updates may vary as new information becomes available.

- Food Distribution Points (FDP)**
 - FDP Regular Deliveries
 - FDP Cross-line Deliveries
 - FDP Cross-border Deliveries
- Country Office
- Sub Office
- Field Office
- Warehouse
- Road Supply Route
- Open Border Crossing Point
- Sporadically Open Border Crossing Point
- Port
- National Capital
- Major Town
- Intermediate Town
- International Boundary
- Governor Boundary
- River
- Surface Waterbody

Sources: OCHA, WFP, GLCS, UNGIWG, UNHCR, Geonames.

The designations employed and the presentation of material in the map(s) do not imply the expression of any opinion on the part of WFP concerning the legal or constitutional status of any country, territory, city or sea, or concerning the delimitation of its frontiers or boundaries. © World Food Programme 2019.