

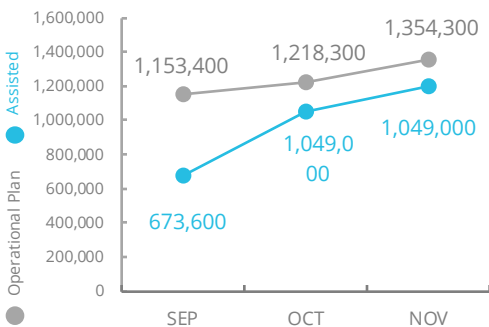


World Food Programme

Nigeria



PEOPLE ASSISTED BY WFP



OPERATIONAL PROFILE

People reached (November)

In-kind Food Distributions



Assisted

529,800

COVID-19 Operational Impact

Status WFP Response

Food Assistance: In-kind provided in the northeast

CBT: Ongoing

Nutrition: Ongoing

Community-based activities: Ongoing

SOURCE: WFP, 30 DEC 2020



FUNDING

Nigeria Country Strategic Plan

January 2021 – June 2021
Net funding requirements

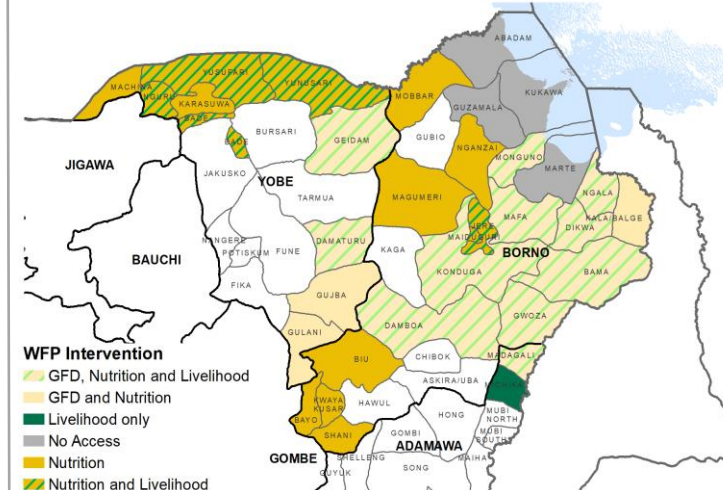
US\$201m

LEVEL 3 RESPONSE
Requirements: USD 191.4m

65%

SOURCE: WFP, 08 JAN 2021

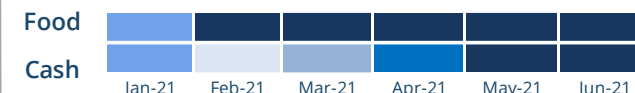
WFP OPERATIONAL PRESENCE



AVERAGE MONTHLY FUNDING REQUIREMENTS (US\$)

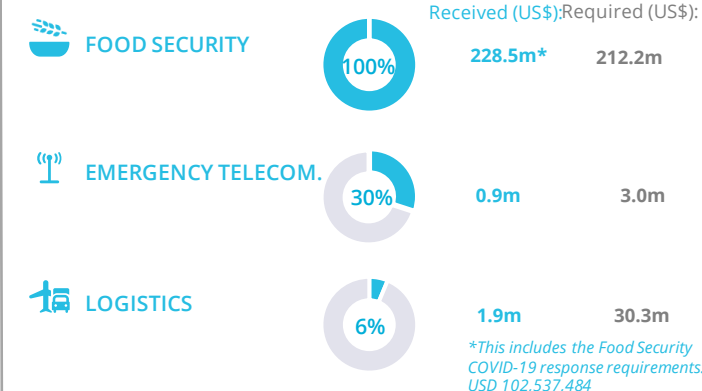
13.7m (Food) 11.8m (Cash)

EXPECTED SHORTFALLS

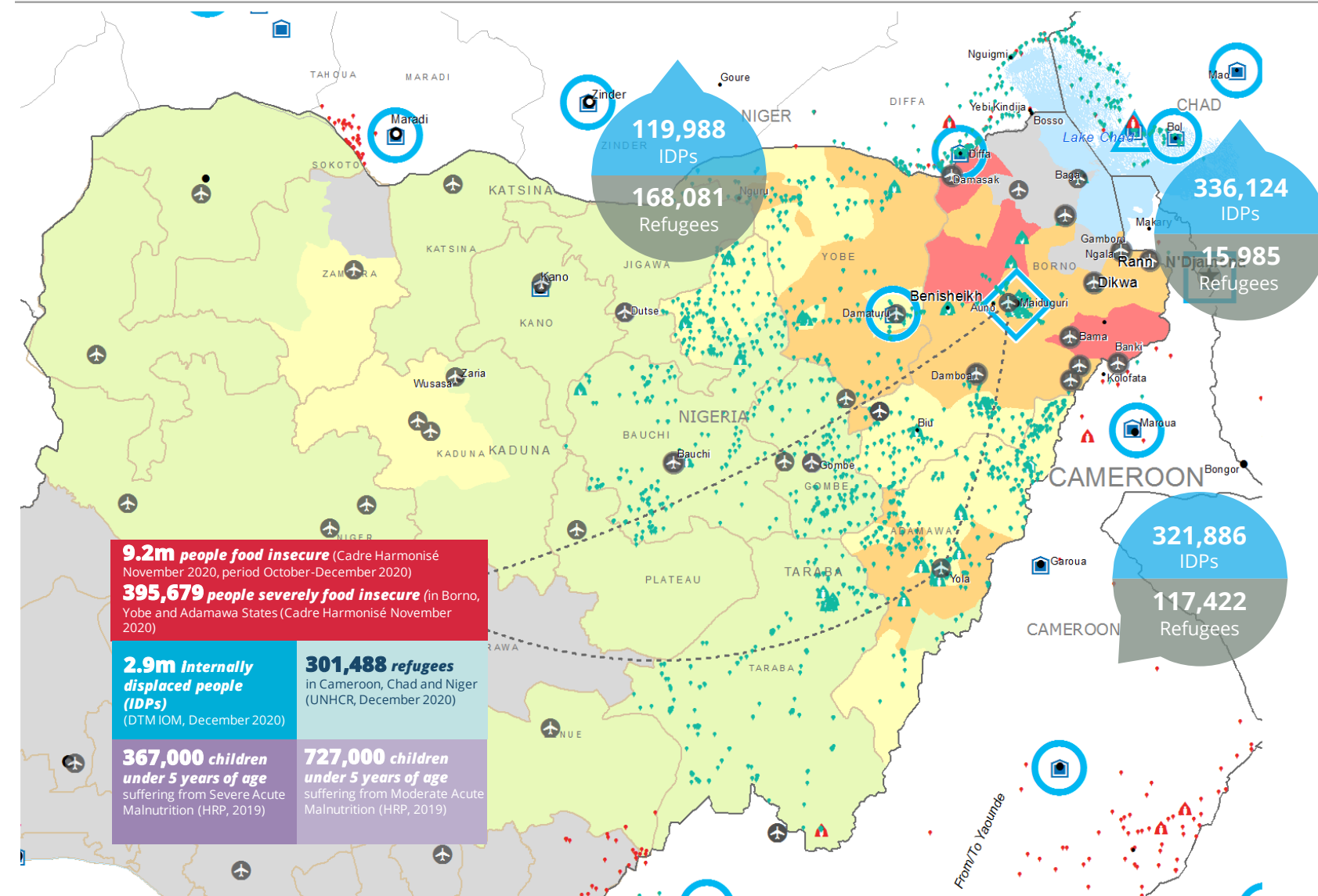
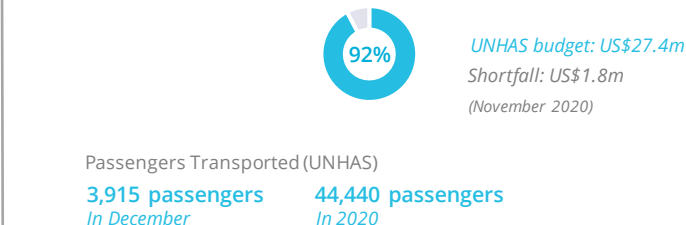


SF < 5% | 5% < SF < 20% | 20% < SF < 50% | 50% < SF < 80% | SF > 80%

WFP-LED AND CO-LED SECTORS

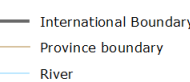
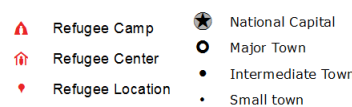
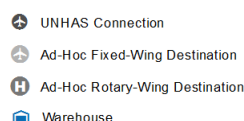


UN HUMANITARIAN AIR SERVICE (UNHAS)



CH Food Security Classification

June - August 2020



Sources: WFP, UNGIWG, GAUL, GLCSC, OCHA, UNHCR.

The designations employed and the presentation of material in the map(s) do not imply the expression of any opinion on the part of WFP the delimitation of its frontiers or boundaries. © World Food Programme 2020.

WFP LEVEL 3 EMERGENCY
SINCE 11 AUGUST 2016

