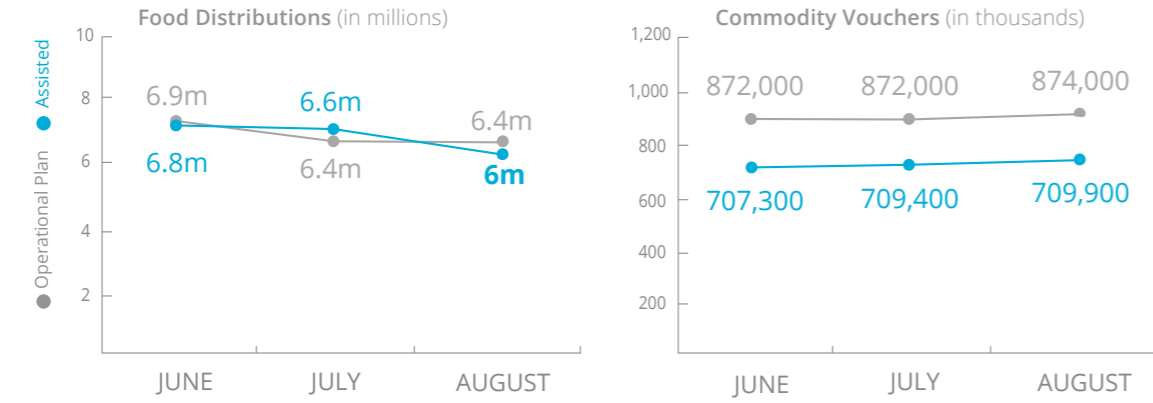


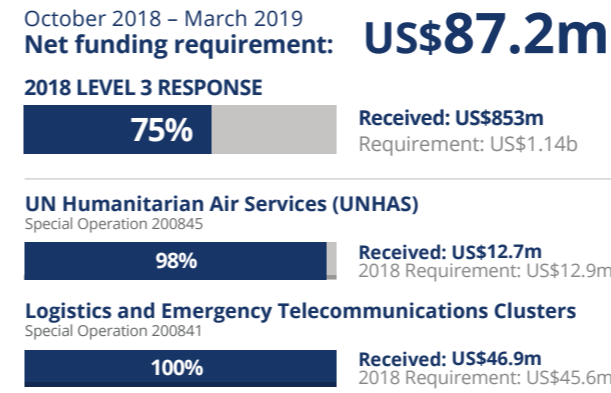
# Yemen

## PEOPLE ASSISTED Yemen Emergency Operation 201068



SOURCE: WFP, 24 SEPTEMBER 2018

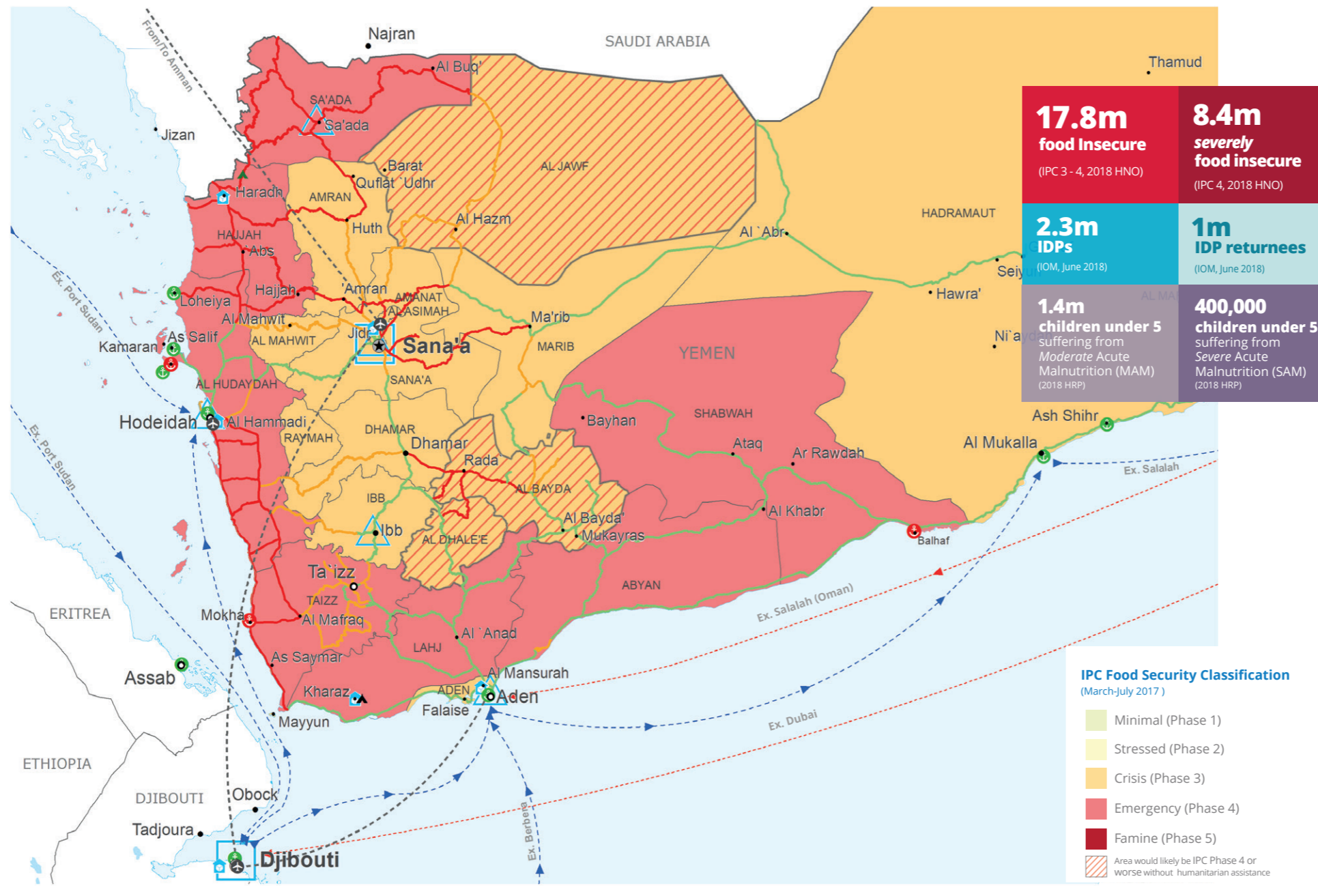
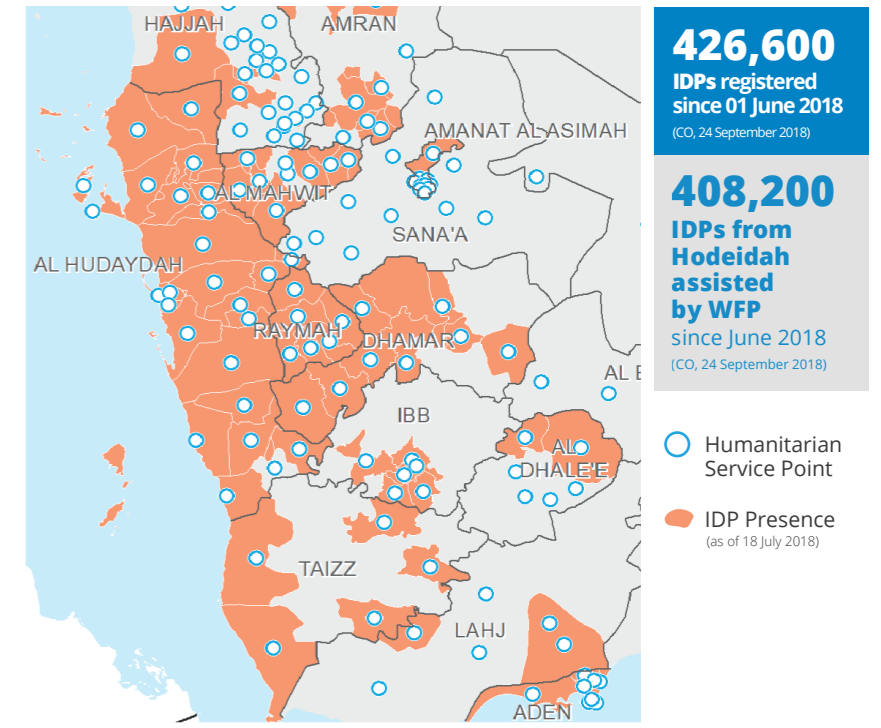
## FUNDING Emergency Operation 201068



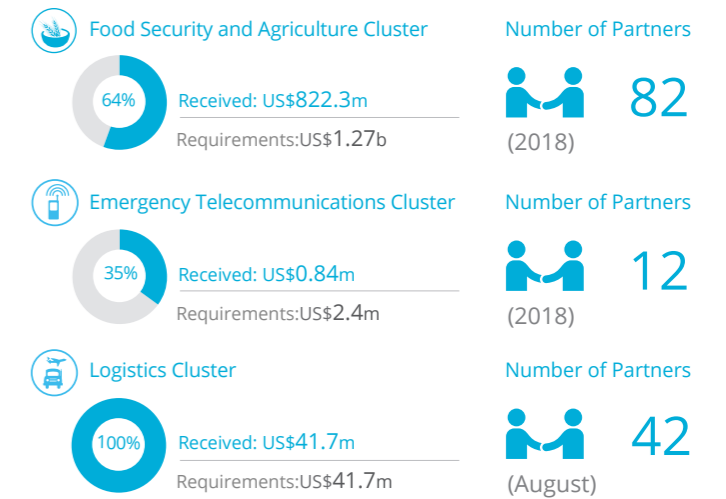
SOURCE: WFP, 27 SEPTEMBER 2018

SOURCE: WFP, 29 AUGUST 2018

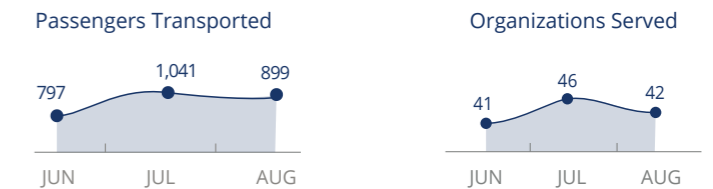
## HODEIDAH CRISIS



## WFP LED & CO-LED CLUSTERS



## UN Humanitarian Air Service (UNHAS)



SOURCES: OCHA FTS, 27 SEPTEMBER 2018; CLUSTERS, 27 SEPTEMBER 2018

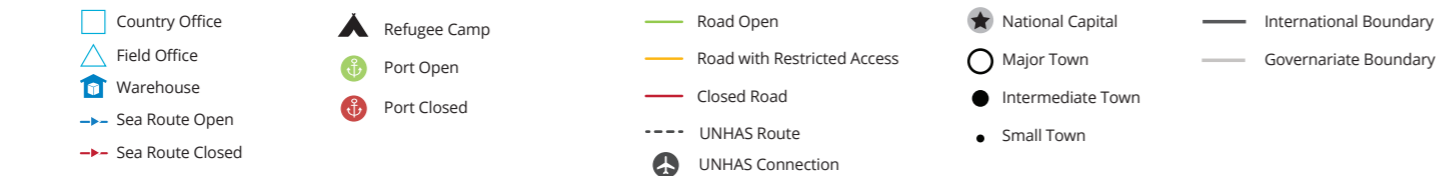
## WFP LEVEL 3 EMERGENCY SINCE 03 JULY 2015

IASC LEVEL 3 EMERGENCY SINCE 1 JULY 2015

For more information, see the SITUATION REPORT and COUNTRY BRIEF [www.wfp.org/countries/yemen](http://www.wfp.org/countries/yemen)

**2A** Emergency Operation 201068  
<http://documents.wfp.org/stellent/groups/public/documents/ep/WFP284303.pdf>

Produced by the WFP Operations Centre (OPSCEN) jointly with Country Office and Regional Bureau Cairo. This dashboard is based on best available information at the time of production. Future updates may vary as new information becomes available.



Sources: WFP, UNGIWG, GAUL, GLSC, OCHA, UNHCR.

The designations employed and the presentation of material in the map(s) do not imply the expression of any opinion on the part of WFP concerning the legal or constitutional status of any country, territory, city or sea, or concerning the delimitation of its frontiers or boundaries.  
© World Food Programme 2018.