



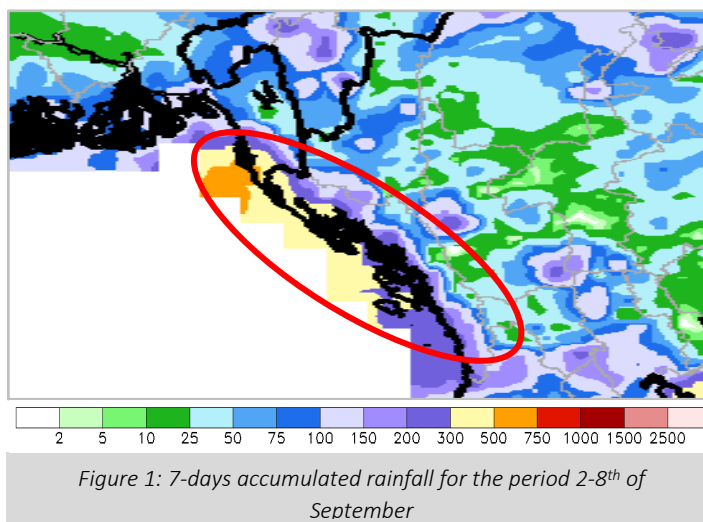
## FLASH ALERT

### ***Heavy monsoon rains leading to potential flooding in southern Bangladesh (incl. Cox's Bazar) and western Myanmar***

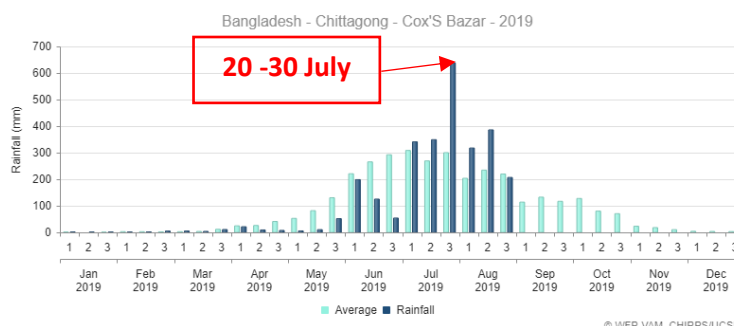
*10 September 2019*

#### Current Status

During the last week, heavy rains of around 200-500mm, mainly associated with the southwestern monsoon were recorded over southern **Bangladesh** (Chittagong) and western **Myanmar** (Chin, Rakhine and Ayeyarwady) while moderate rains were recorded in Barisal, central and eastern Chin, Magway, Bago and Yangon. In Bangladesh and Myanmar, these rains of around 200-500mm in seven days, represent 200-400% of the average during the peak rainfall period (June-July) in the highlighted areas (figure 1).



In late July, total rainfall amounts of around 600mm in 10 days (figure 2) caused severe flooding in Sylhet, Rangpur and Cox's Bazar in Chittagong. Since the 7<sup>th</sup> of September, around 150-300mm of rainfall in 24 hours were recorded in Chittagong, southern **Bangladesh** and **coastal areas of western Myanmar**. These rainfall amounts in 24 hours represent around 1 week of average rainfall during the peak rainfall period in **Cox's Bazar**.



#### Forecast

##### **Bangladesh and Myanmar**

Over the next 3-5 days, areas in southern Bangladesh (**Sujanagar, Raojah and Cox's Bazar**) are expected to receive 200-300mm of rainfall (Figure 3) representing around **130-200%** of the average rainfall during the peak rainfall period (July). These rainfall amounts will potentially result in flash floods and landslides in these areas. **The heaviest rainfall is forecast for 11-12 September with around 90mm expected in 24 hours** (figure 4). Barisal, Kalapara, Khulna, Comila in **Bangladesh** will potentially receive less than 150mm of rains over the next 5 days, but are still at moderate risk of flash floods as these areas are historically prone to flooding and landslides (figure 5).

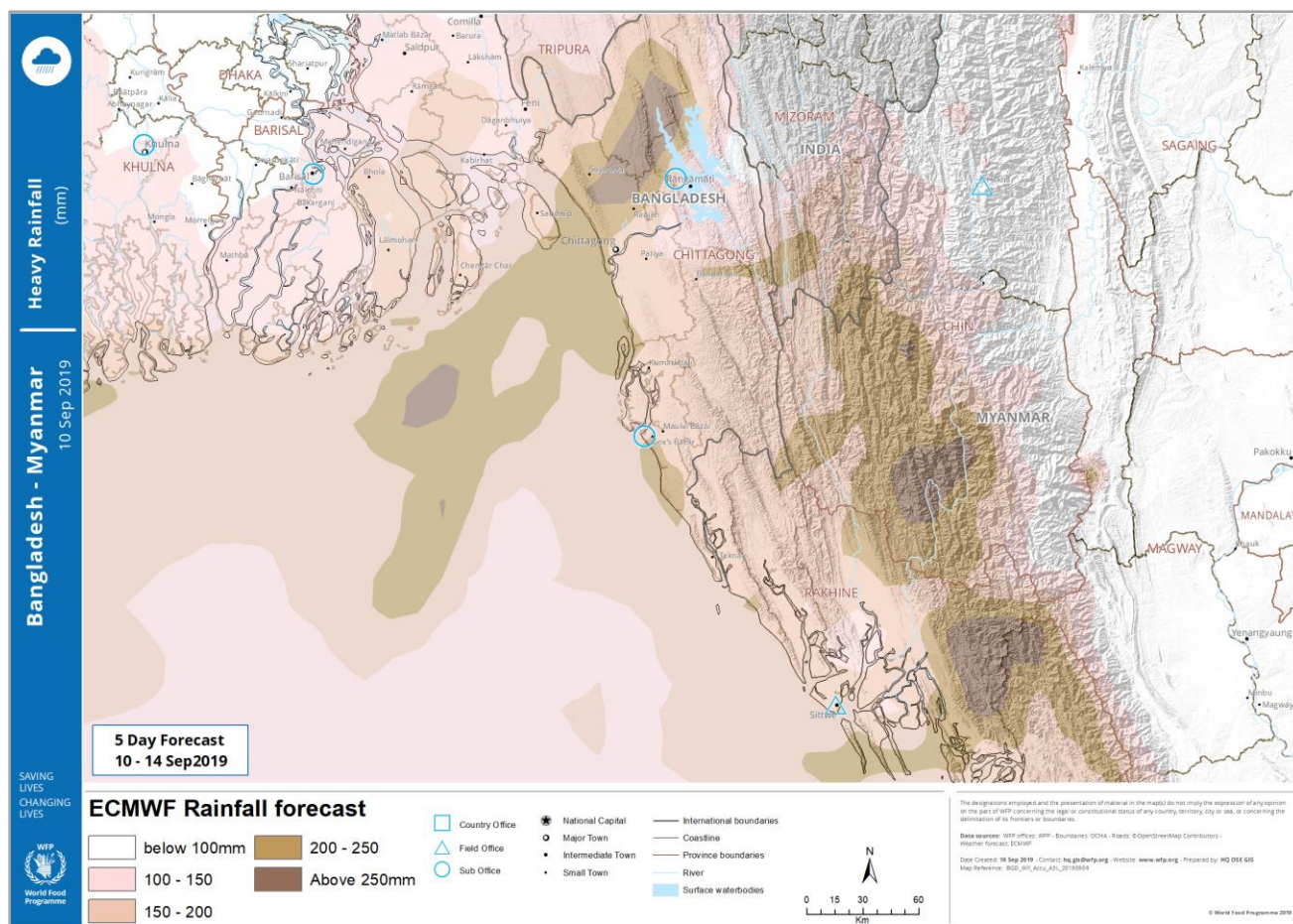


Figure 3: The situation as of 10<sup>th</sup> of September with 5-days rainfall forecast over southern Bangladesh and western Myanmar.

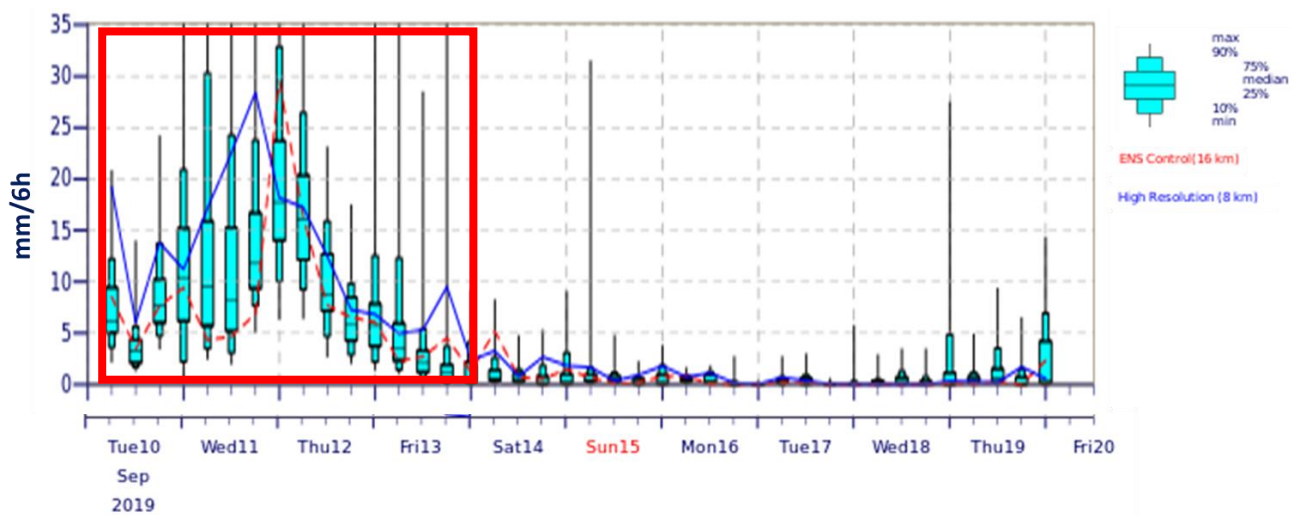


Figure 4: Total precipitation forecast in mm/6h over Cox's Bazar with high resolution model (8km, blue).

In **Myanmar**, Teknaf, Sittwe, Matupi, Kyaukpyu and Kyeintali are expected to receive up to 250mm of rainfall leading to potential flooding and landslides over the next 3-5 days, while Yangon, Magwe and neighbouring areas are expected to receive moderate rains, with maximum rainfall occurring over the next 2 days.

**Produced by the Emergency Preparedness & Support Response Division**  
**Contact:** [wfp.early.warning@wfp.org](mailto:wfp.early.warning@wfp.org)

Please consult your national meteorological agency or the appropriate World Meteorological Organization Regional Specialized Meteorological Center for official weather forecasts pertinent to your country, region and/or local area. The published material is being distributed without warranty of any kind including as to the accuracy of data. Responsibility of the interpretation and use of the material lies solely with the reader; in no event shall WFP be liable for damages arising from its interpretation, use or reliance thereon. The designations employed and the representation of material in the map do not imply the expression of any opinion whatsoever of WFP concerning the legal or constitutional status of any country, territory or sea area, or concerning the delimitation of frontiers.





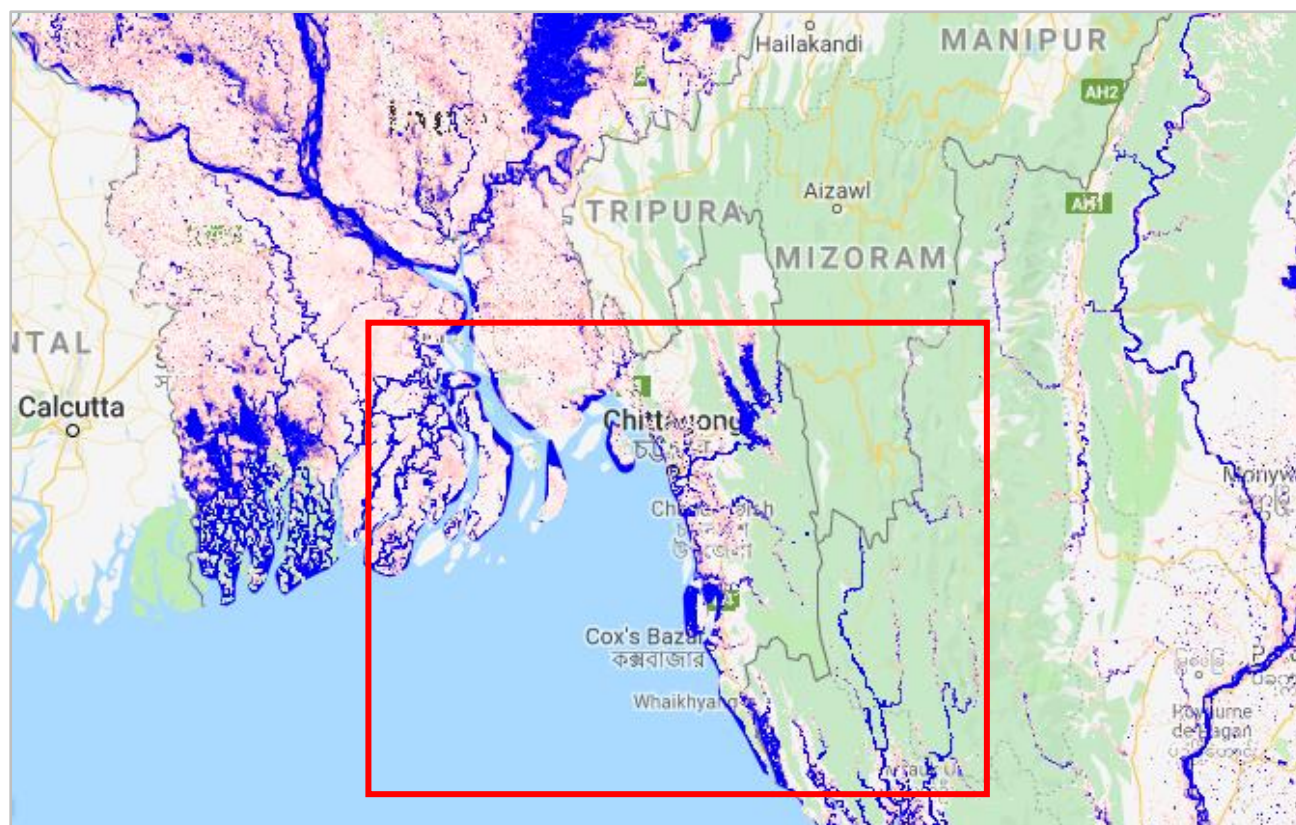


Figure 5: JRC historical flood hazard with 20-years return period in southern Bangladesh and western Myanmar



