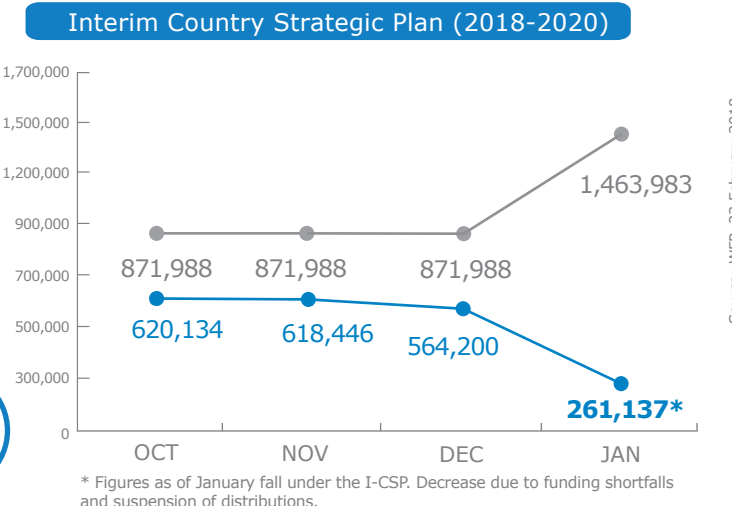
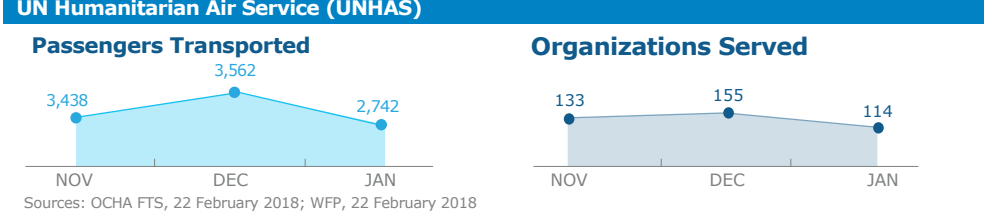
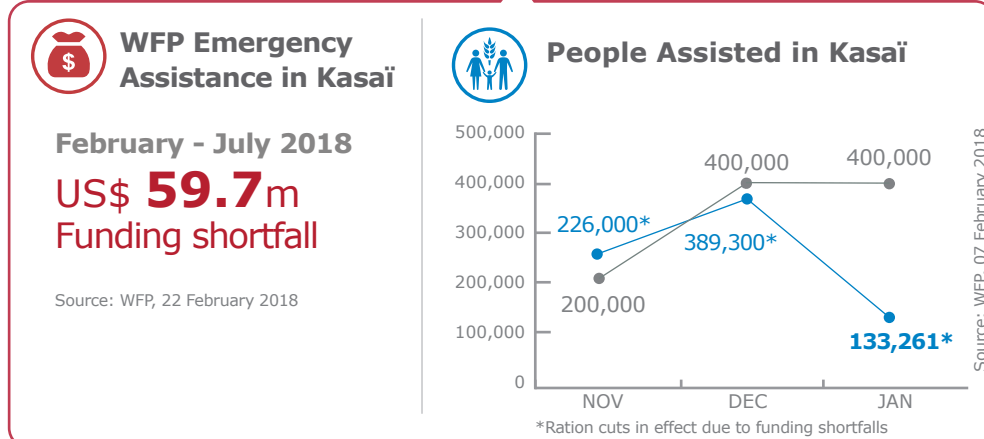
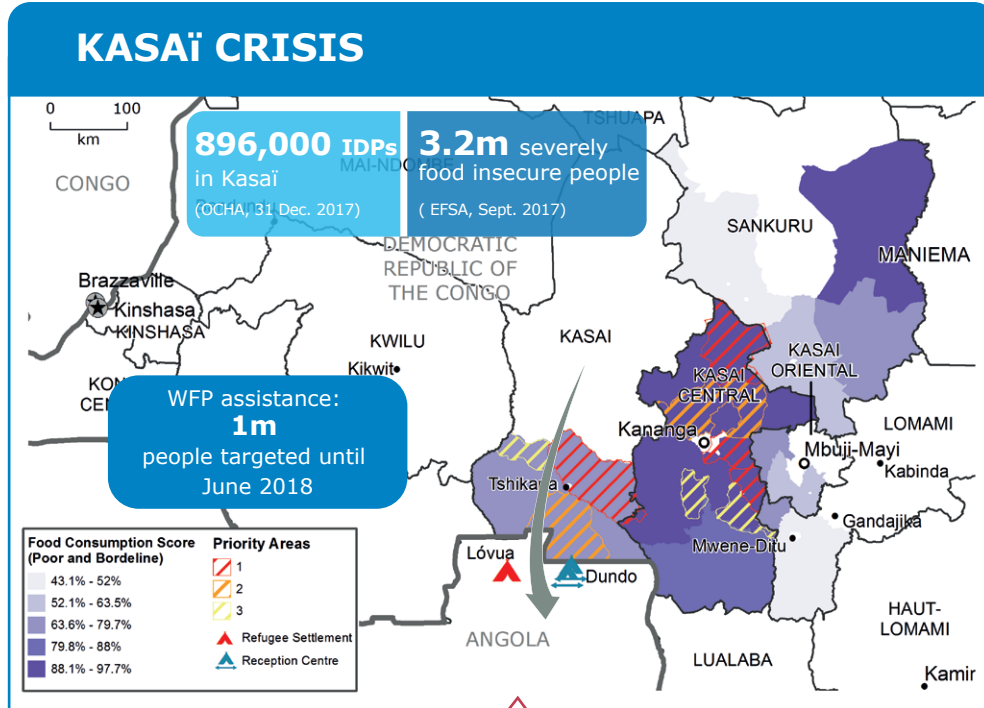
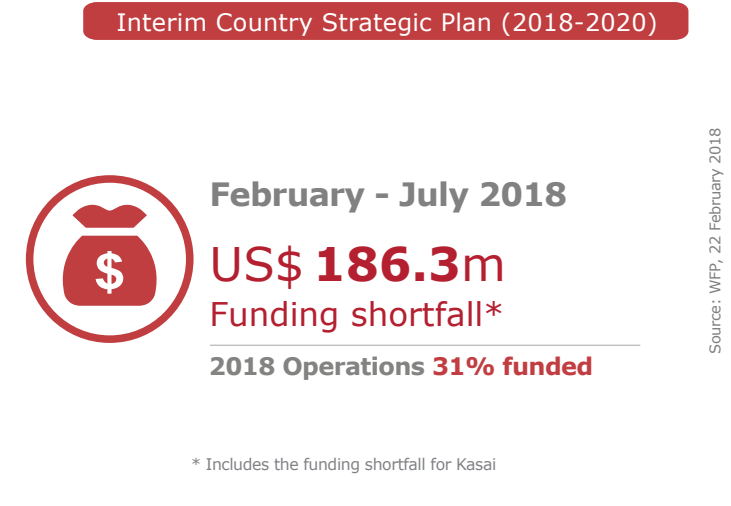


PEOPLE ASSISTED



FUNDING

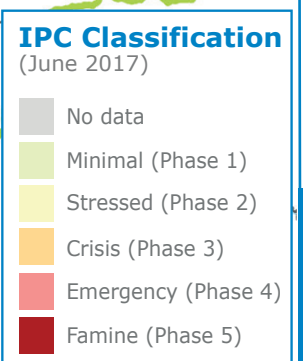
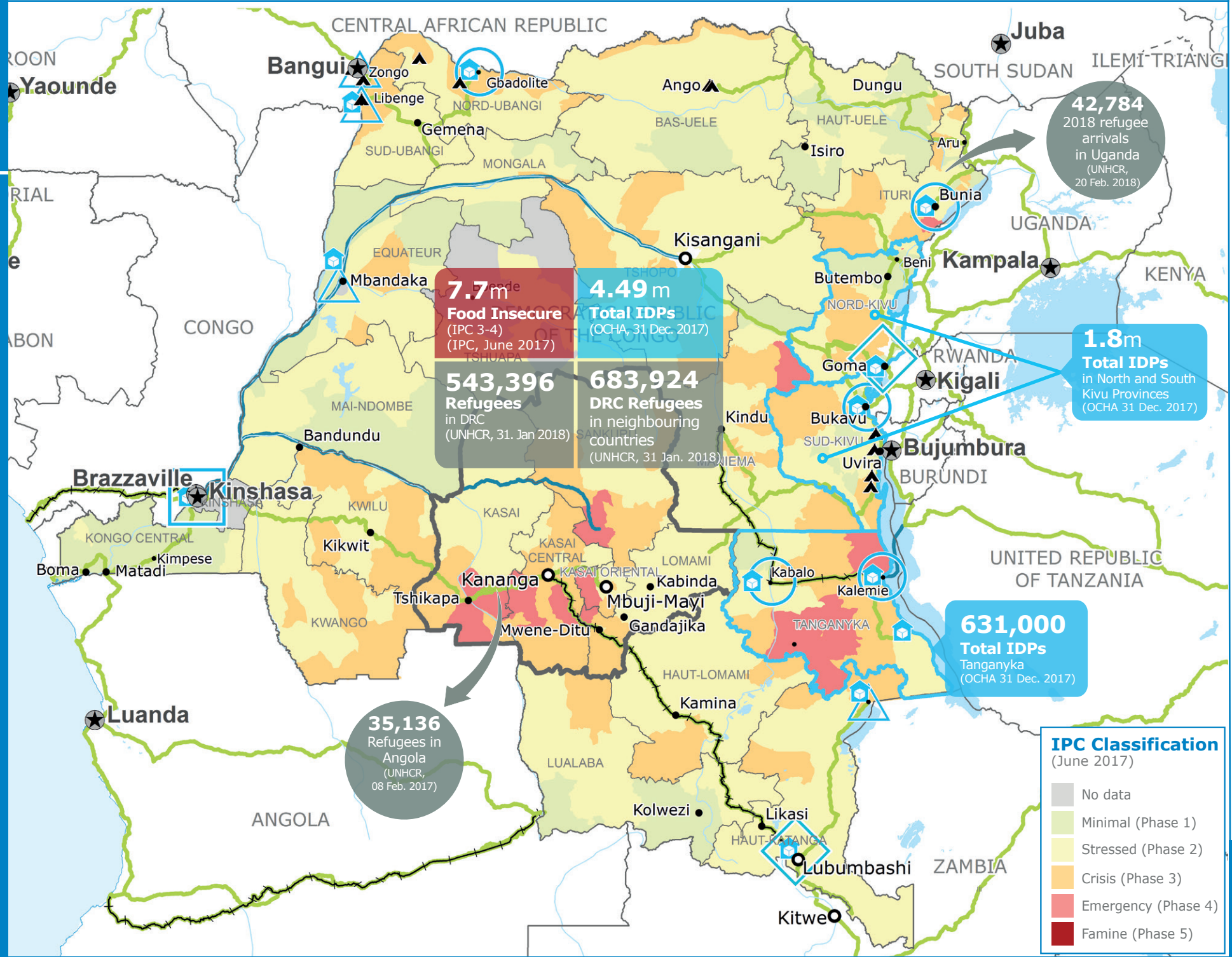


WFP LEVEL 3 EMERGENCY
SINCE 06 OCTOBER 2017

For more information, see the **SITUATION REPORT** and **COUNTRY BRIEF** www.wfp.org/countries/congo-democratic-republic

Democratic Republic of Congo
Interim Country Strategic Plan (2018-2020)
<http://documents.wfp.org/stellent/groups/public/documents/ep/WFP284303.pdf>

Produced by the **WFP Operations Centre (OPSCEN)** jointly with Country Office and Regional Bureau Johannesburg
This dashboard is based on best available information at the time of production. Future updates may vary as new information becomes available.



- Country Office
- Area Office
- Sub Office
- Field Office
- Warehouse
- Refugee Camp
- Road Supply Route
- Railway Supply Route
- Water Supply Route
- National Capital
- Major Town
- Intermediate Town
- Small town
- International Boundary
- Province boundary
- River
- Surface Waterbody

Sources: WFP, UNGIWG, GAUL, GLCSC, OCHA, UNHCR, IPC
The designations employed and the presentation of material in the map(s) do not imply the expression of any opinion on the part of WFP concerning the legal or constitutional status of any country, territory, city or sea, or concerning the delimitation of its frontiers or boundaries. © World Food Programme 2018