

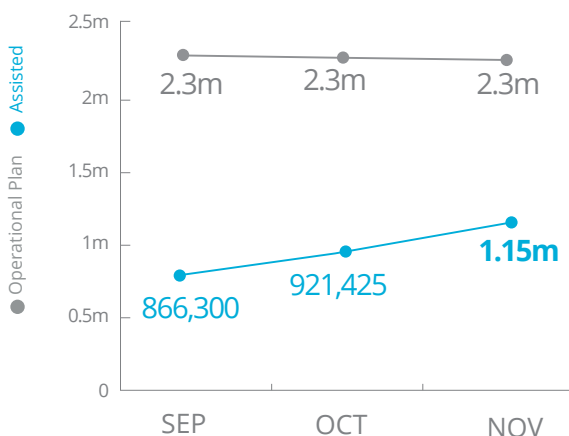


World Food Programme

Democratic Republic of Congo

PEOPLE ASSISTED

DR Congo Interim Country Strategic Plan (ICSP)



SOURCE: WFP, 05 DECEMBER 2018

OPERATIONAL PROFILE



NOVEMBER
Percentages may include overlaps, i.e. beneficiaries that have been assisted through two or more activities/modalities.

SOURCE: WFP, 05 DECEMBER 2018

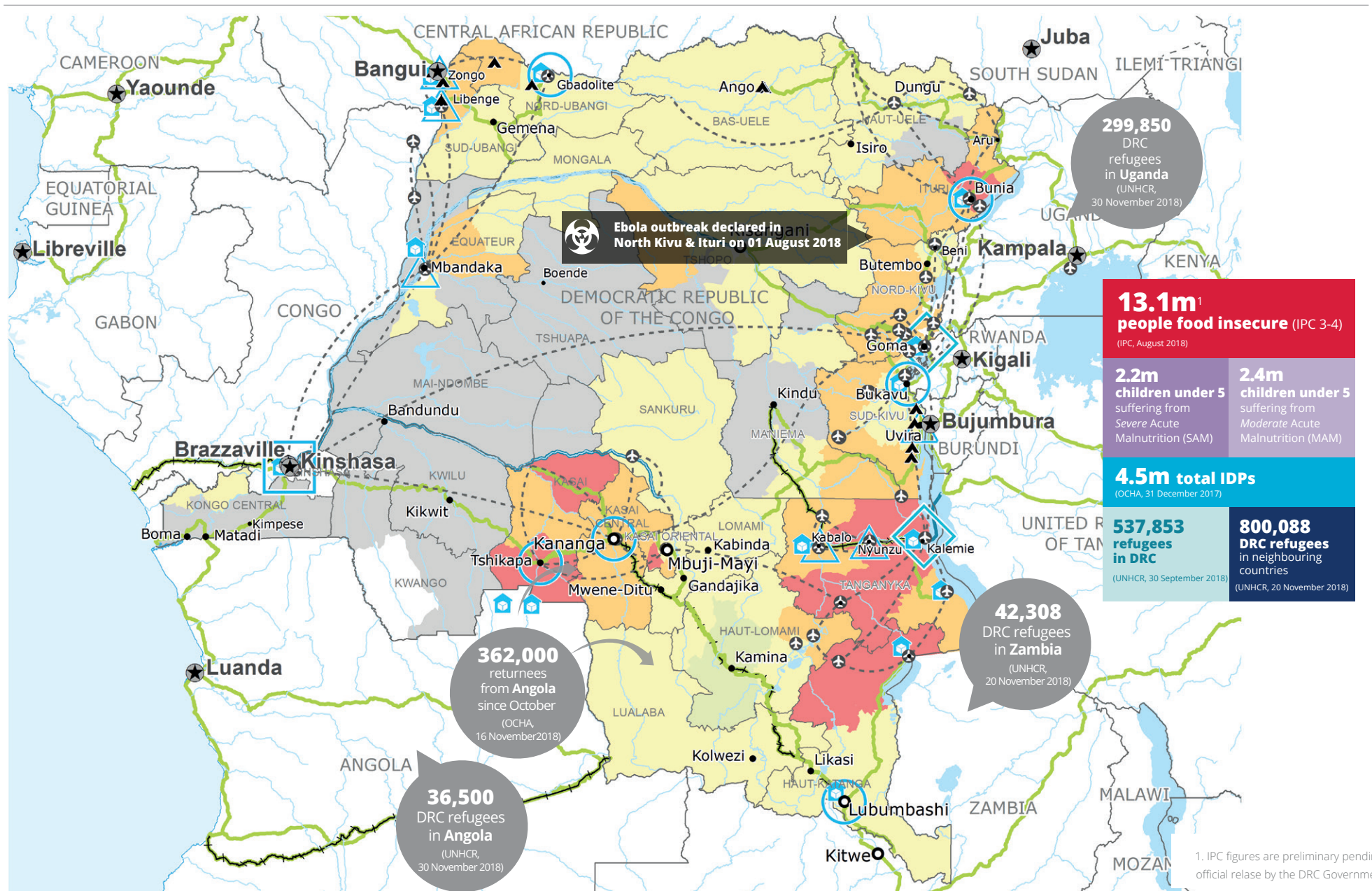
FUNDING

DR Congo Interim Country Strategic Plan (ICSP)

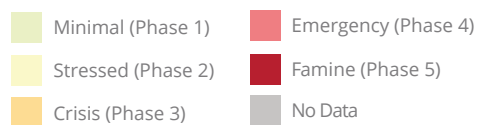
January - June 2019
US\$155.5m
Net funding requirement



SOURCE: WFP, 20 DECEMBER 2018



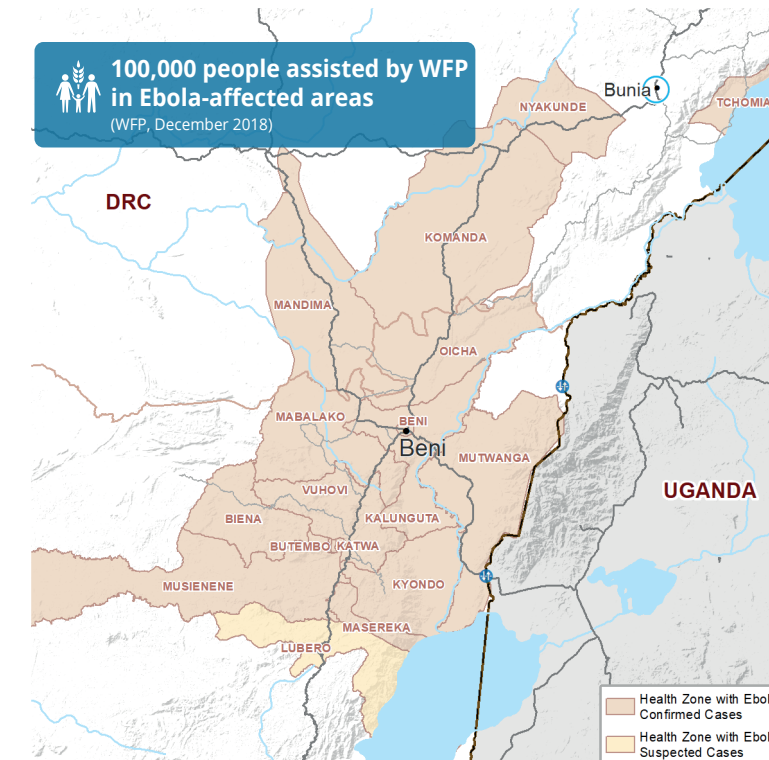
IPC Food Security Classification (August 2018)



Sources: WFP, UNGIWG, GAUL, GLCSO, OCHA, UNHCR, IPC.

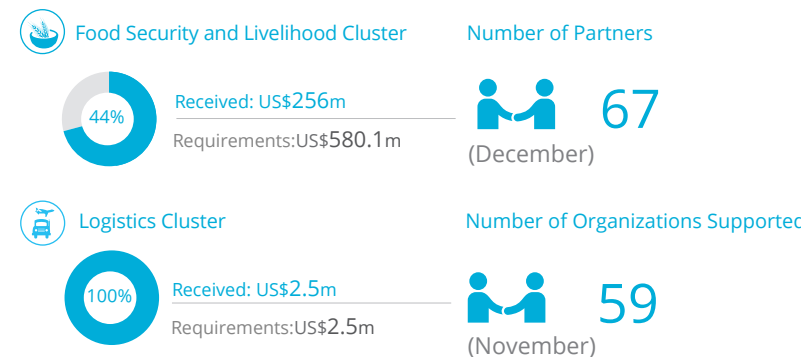
The designations employed and the presentation of material in the map(s) do not imply the expression of any opinion on the part of WFP concerning the legal or constitutional status of any country, territory, city or sea, or concerning the delimitation of its frontiers or boundaries. © World Food Programme 2018.

EBOLA AFFECTED HEALTH ZONES

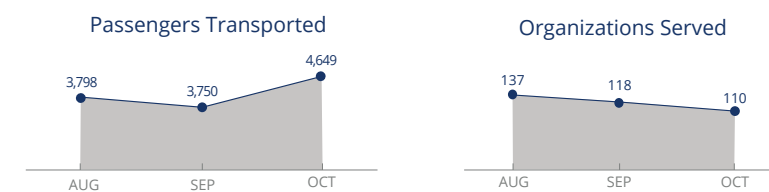


SOURCE: WHO, DECEMBER 2018

WFP LED & SUPPORTED CLUSTERS



UN Humanitarian Air Service (UNHAS)



SOURCES: OCHA FTS, 11 DECEMBER 2018; CLUSTERS, 11 DECEMBER 2018

WFP LEVEL 3 EMERGENCY

SINCE 06 OCTOBER 2017 (LEVEL 2 EMERGENCY SINCE 12 DEC 2013)

For more information, see the SITUATION REPORT and COUNTRY BRIEF www.wfp.org/countries/congo-democratic-republic

2A Interim Country Strategic Plan (2018-2020)

Produced by the WFP Operations Centre (OPSCEN) jointly with Country Office and Regional Bureau Johannesburg. This dashboard is based on best available information at the time of production. Future updates may vary as new information becomes available.