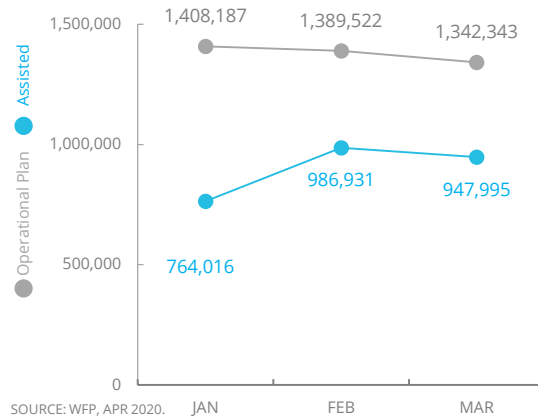


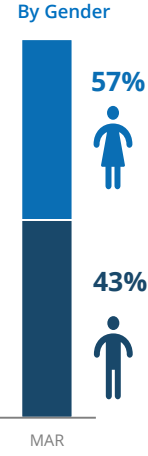
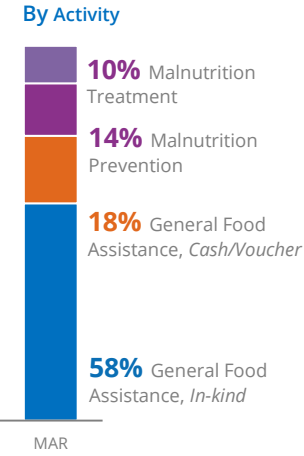
Democratic Republic of Congo

PEOPLE ASSISTED

DR Congo Interim Country Strategic Plan



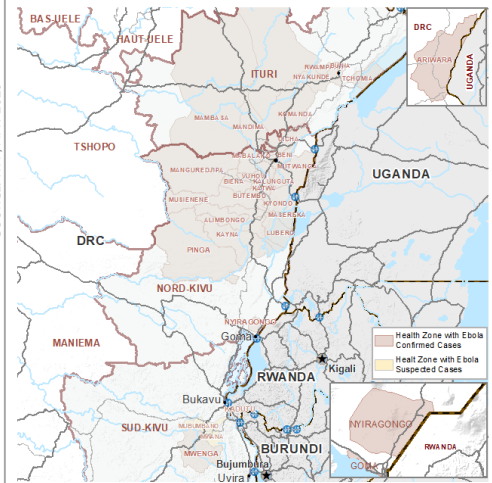
OPERATIONAL PROFILE



COVID-19 OPERATIONAL IMPACT

- Status: WFP Response adjusted
- ✓ Emergency Food Distribution
 - ✓ Delayed distribution timelines
 - ✓ Crowd control and social distancing measures at distribution sites
 - ✓ Mandatory hygiene measures at distribution sites
 - ✓ School feeding through take home rations
- Legend: ✓ Ongoing, ⚠ Partially Suspended, ✗ Suspended

EBOLA OUTBREAK

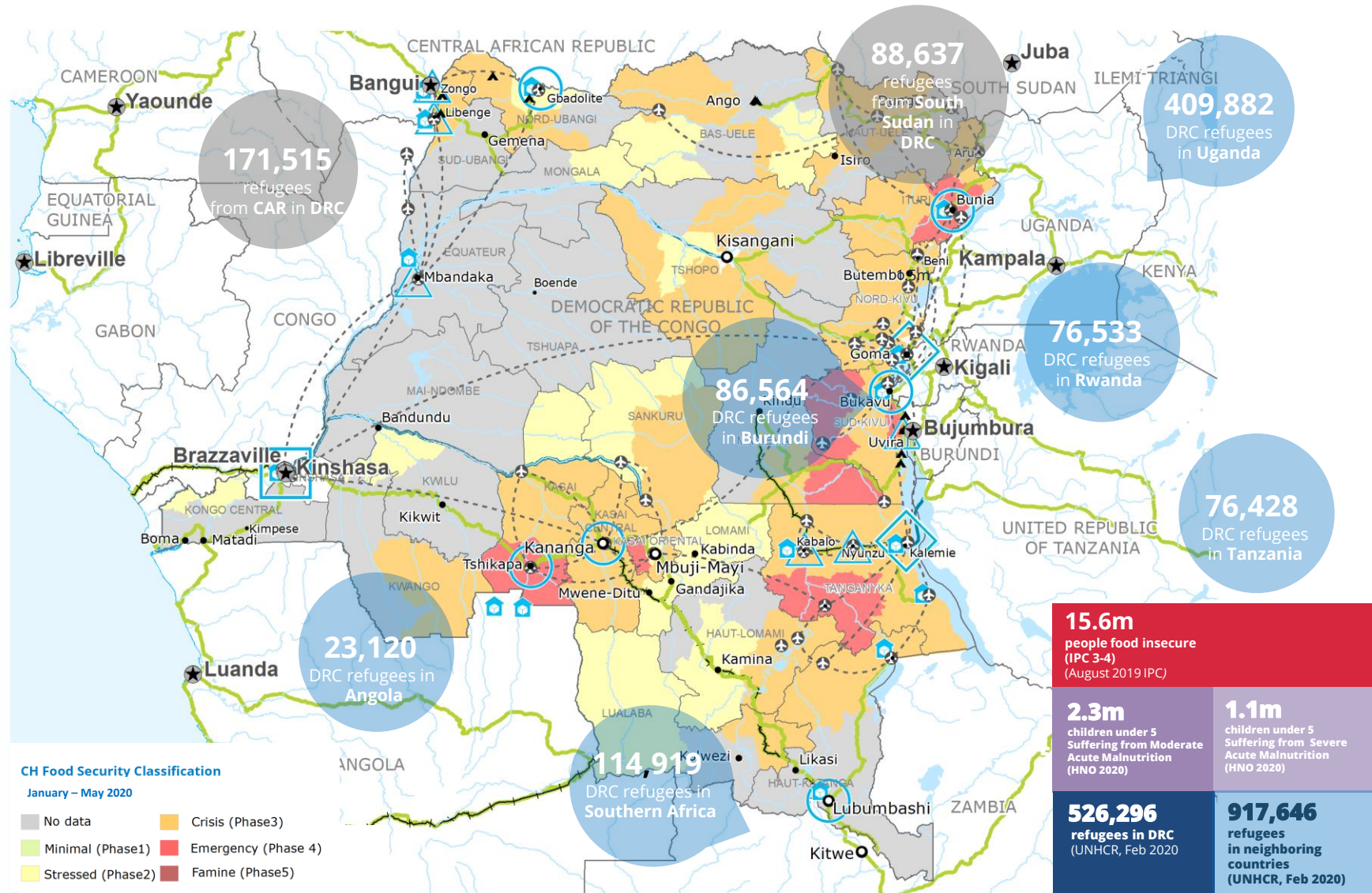


CASES
 Reported 3,462
 Confirmed 2,085
 Survivors 1,161
 Deaths 2,229

920,000 People Assisted

13,600 MT Food distributed

August 2018 – 07 MAY 2020



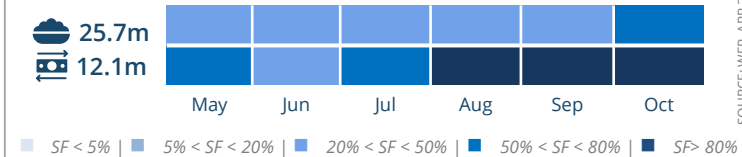
FUNDING

DR Congo Interim Country Strategic Plan (ICSP)
 May – October 2020

Net funding requirements
US\$177m

2020 LEVEL 3 RESPONSE
 Requirements US\$ 569m

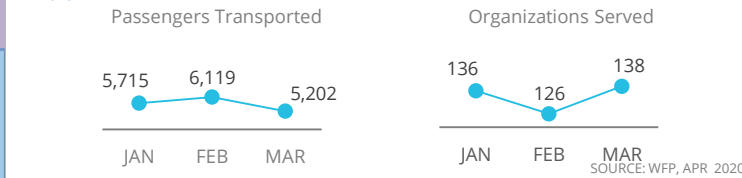
EXPECTED SHORTFALLS (US\$)



WFP-LED AND SUPPORTED CLUSTERS



UN HUMANITARIAN AIR SERVICES (UNHAS)



WFP LEVEL 3 EMERGENCY

SITUATION REPORT and COUNTRY BRIEF

Gender and Age Marker