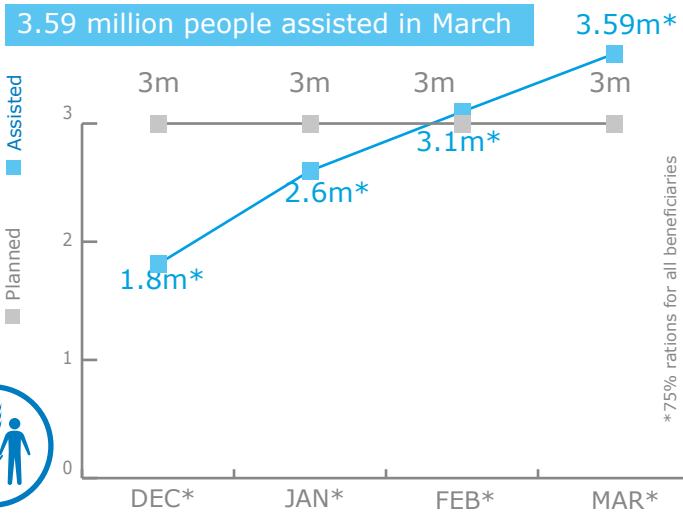
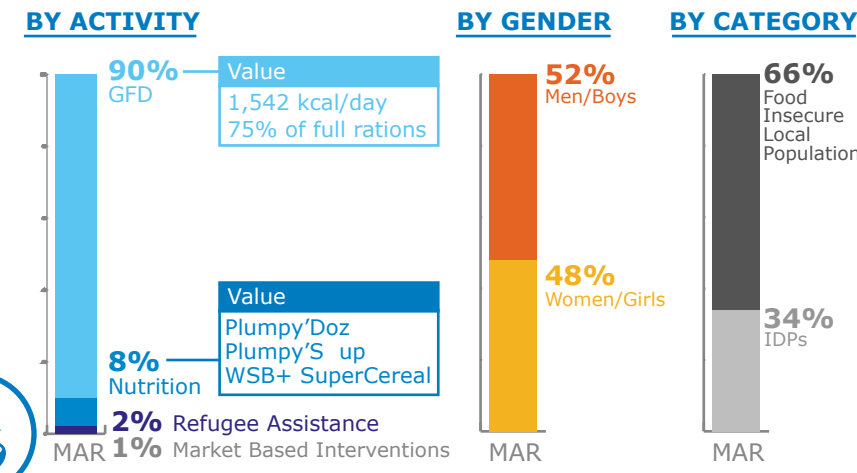


BENEFICIARIES

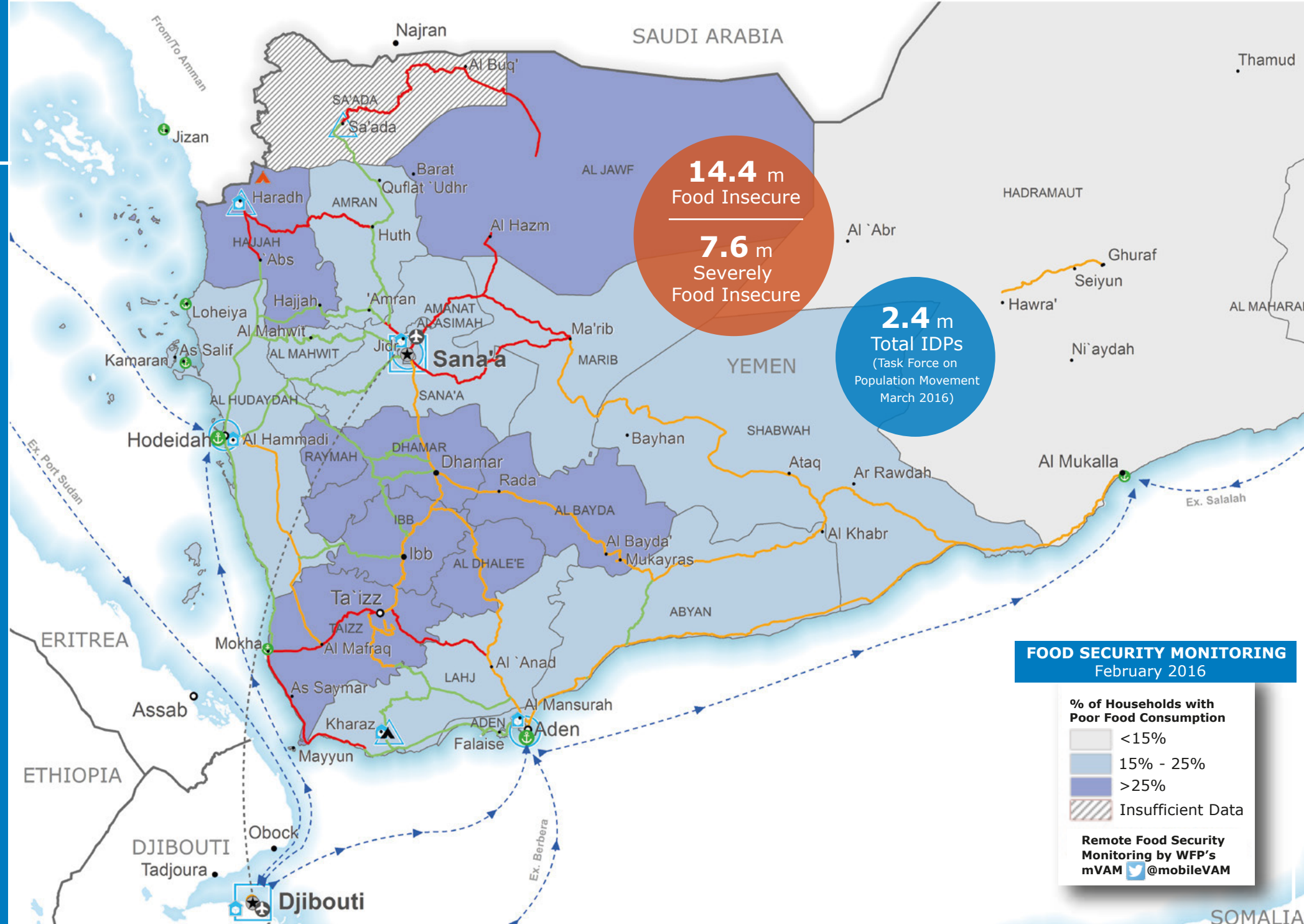
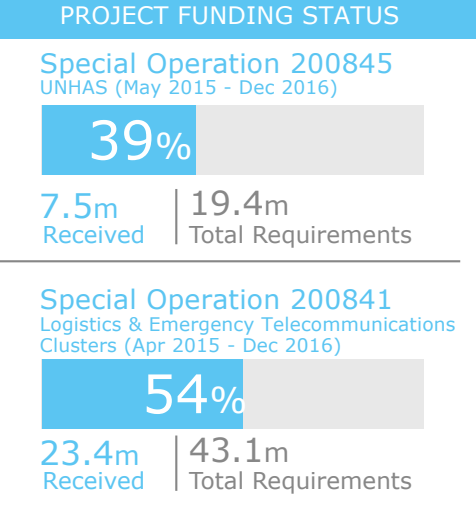
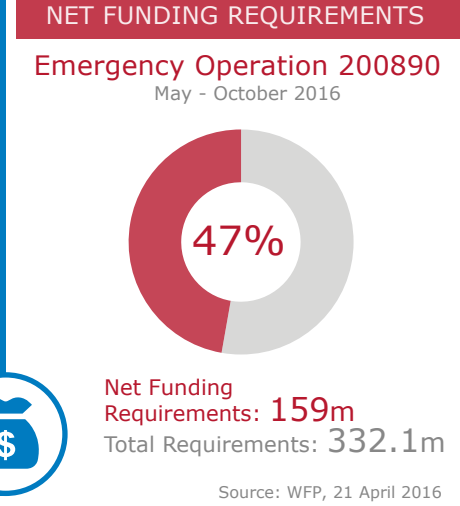
Emergency Operation 200890



BENEFICIARY PROFILE

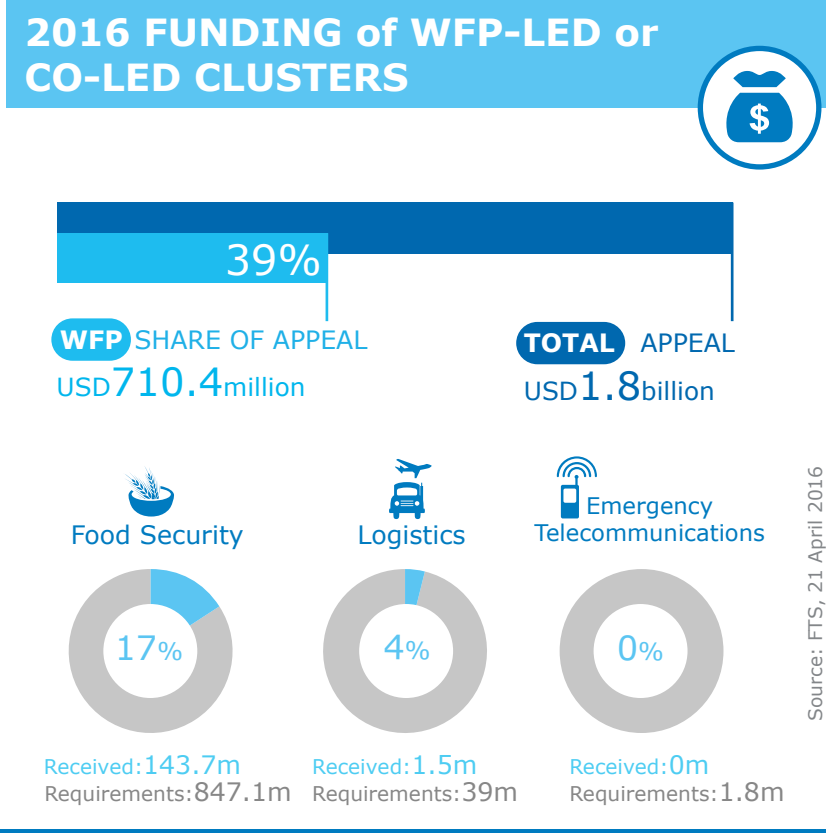


FUNDING



OPERATIONAL CHALLENGES

- Humanitarian Access
- Insecurity
- Resources



WFP LEVEL 3 EMERGENCY

SINCE 03 JULY 2015
IASC LEVEL 3 (SINCE 01 JULY 2015)

Check the **COUNTRY BRIEF** <https://www.wfp.org/countries/yemen>

Produced by the WFP Operations Centre (OPSCEN)
This dashboard is based on best available information at the time of production. Future updates may vary as new information becomes available.



- Country Office
- Warehouse
- UNHAS Connection
- Road Open
- National Capital
- International Boundary
- Sub Office
- IDP Camp
- UNHAS Connection
- Road With Restricted Access
- Major Town
- Governorate Boundary
- Field Office
- Refugee Camp
- Port Operational
- Closed Road
- Intermediate Town
- Small Town
- Transit Camp
- Port with Restricted Access
- Supply Road Open

Sources: WFP, UNGIWG, GAUL, GLCSC, OCHA, UNHCR, mVAM
The designations employed and the presentation of material in the map(s) do not imply the expression of any opinion on the part of WFP concerning the legal or constitutional status of any country, territory, city or sea, or concerning the delimitation of its frontiers or boundaries. © World Food Programme 2016

Source: WFP, 21 April 2016

Source: FTS, 21 April 2016