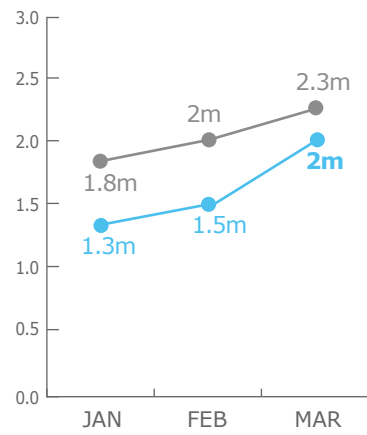


PEOPLE ASSISTED



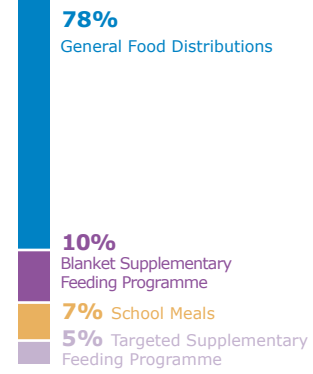
EMOP 200859 & PRRO 200572



OPERATIONAL PROFILE

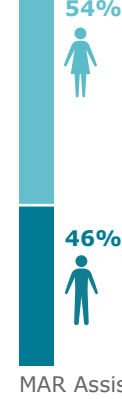


BY ACTIVITY



MAR Assisted
Percentages of activities may include overlaps, i.e. beneficiaries that have been assisted with two or more different activities.

BY GENDER



MAR Assisted

FUNDING



May - October 2017

US\$201m
Net Funding Requirements

Emergency Operation 200859 and Protracted Relief & Recovery Operation 200572

Source: WFP, 19 April 2017

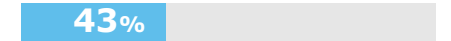
2017 FUNDING REQUIREMENTS

Special Operation 200379
Feeder Road Construction



Received: US\$1m | Total Required: US\$25m

Special Operation 201029
Humanitarian Air Service (UNHAS)

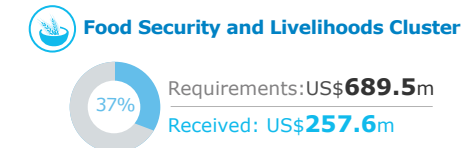


Received: US\$25m | Total Required: US\$58m

Note: Funding for the project cycle, including carry-over.

Source: WFP, 19 April 2017

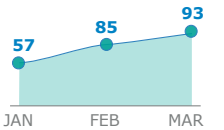
WFP-LED & CO-LED CLUSTERS



Number of Partners

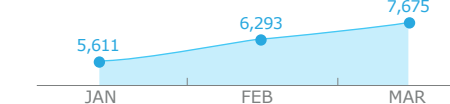
64
(2017)

Organizations Supported



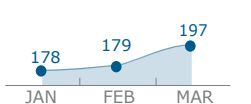
UN Humanitarian Air Service (UNHAS)

Passengers Transported

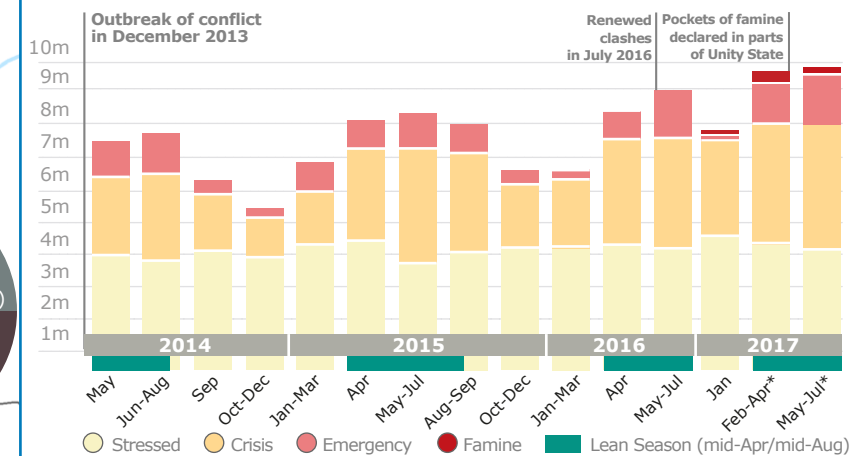


Sources: WFP, 18 April 2017

Organizations Supported



HISTORICAL FOOD INSECURITY (IPC)



* Projections; Source: IPC, 20 February 2017

WFP LEVEL 3 EMERGENCY

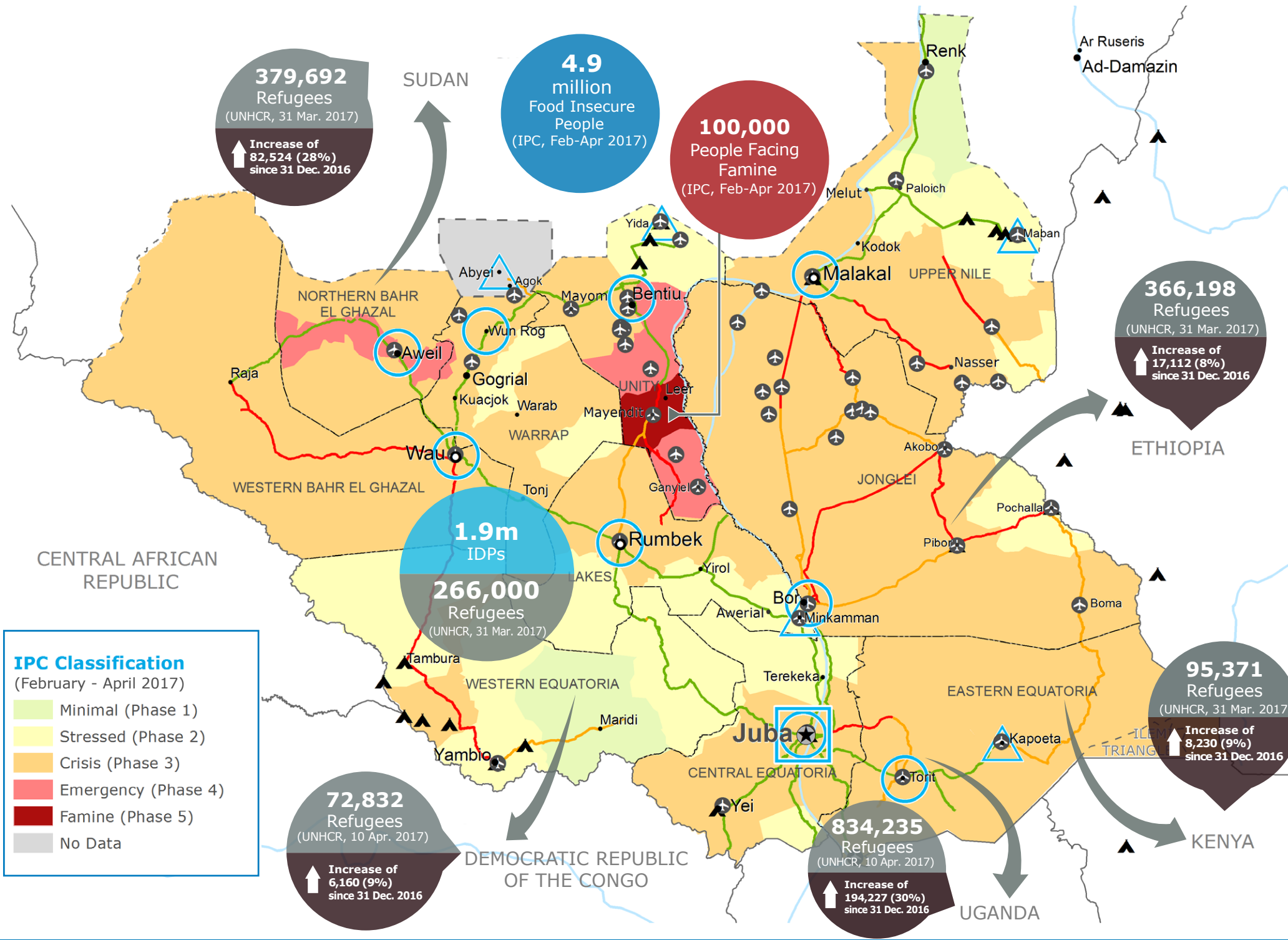
SINCE 23 DECEMBER 2013

For more information, see the **SITUATION REPORT** and **COUNTRY BRIEF** www.wfp.org/countries/south-sudan

2A EMOP 200859

documents.wfp.org/stellent/groups/public/documents/ep/WFP284303.pdf

Produced by the WFP **Operations Centre (OPSCEN)** jointly with Country Office and Regional Bureau Nairobi
This dashboard is based on best available information at the time of production. Future updates may vary as new information becomes available.



IPC Classification (February - April 2017)

- Minimal (Phase 1)
- Stressed (Phase 2)
- Crisis (Phase 3)
- Emergency (Phase 4)
- Famine (Phase 5)
- No Data

- Country Office
- Sub Office
- Field Office
- Road Open
- Closed Road
- Road with Limited Access
- Refugee / IDP Camp
- UNHAS Connection
- National Capital
- Major Town
- Intermediate Town
- Small Town
- International Boundary
- Undetermined Boundary
- Abyei Region
- State Boundary

Sources: WFP, UNGIWG, GAUL, GLCSC, OCHA, UNHCR, IPC
The designations employed and the presentation of material in the map(s) do not imply the expression of any opinion on the part of WFP concerning the legal or constitutional status of any country, territory, city or sea, or concerning the delimitation of its frontiers or boundaries.
© World Food Programme 2017

