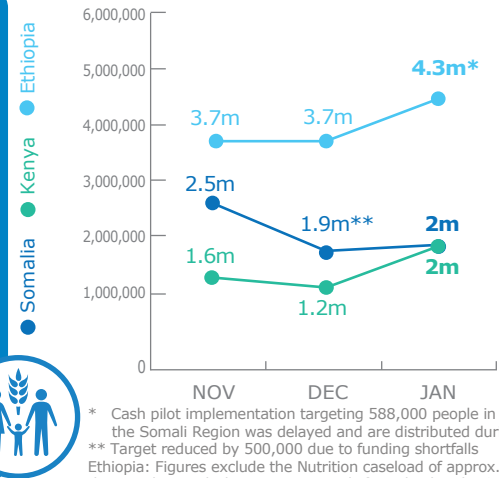
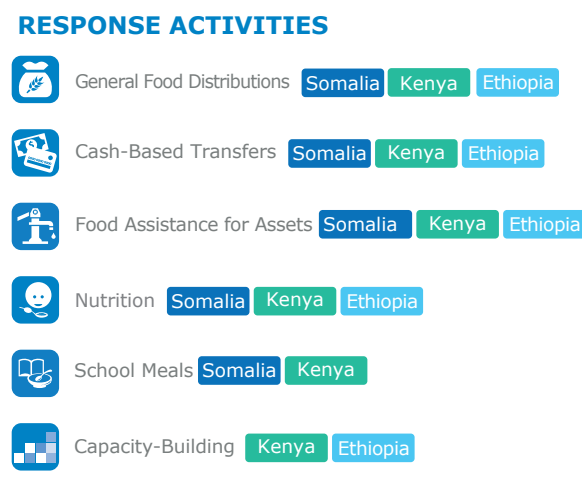


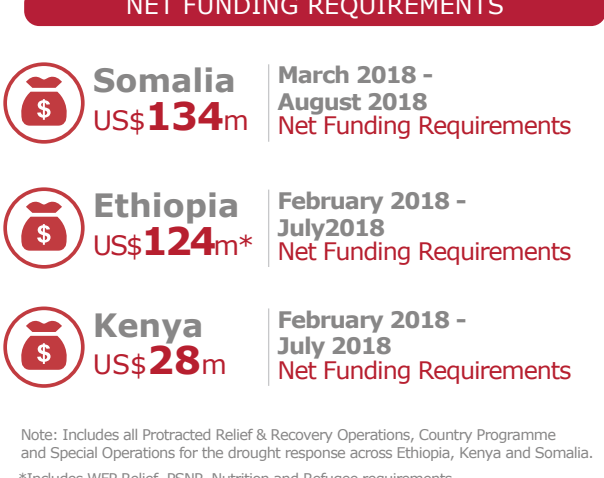
## PEOPLE ASSISTED



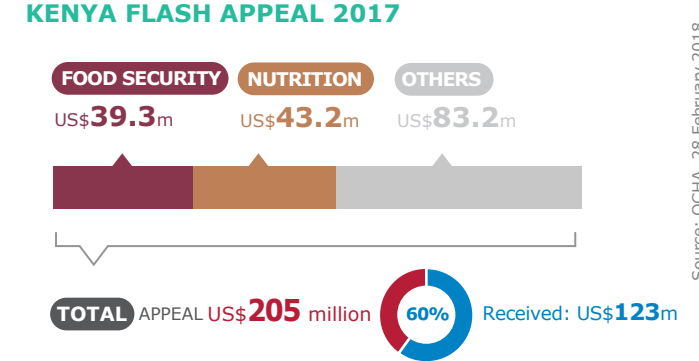
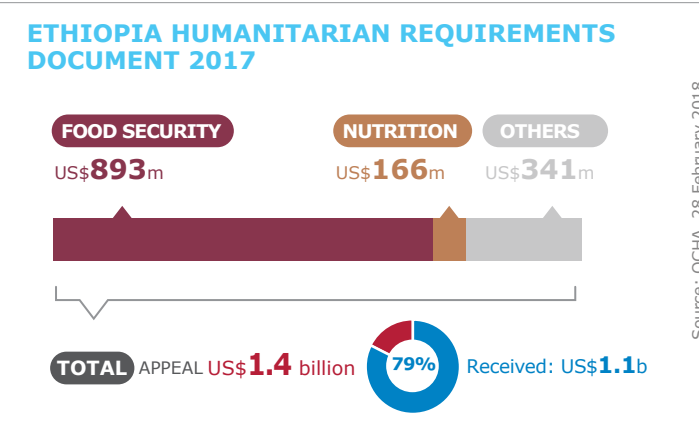
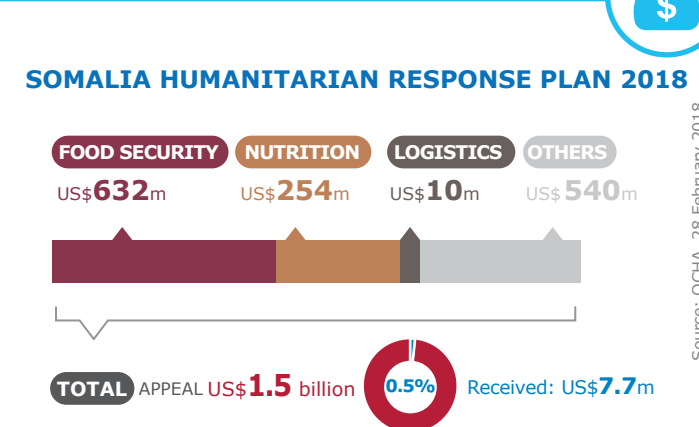
## OPERATIONAL PROFILE



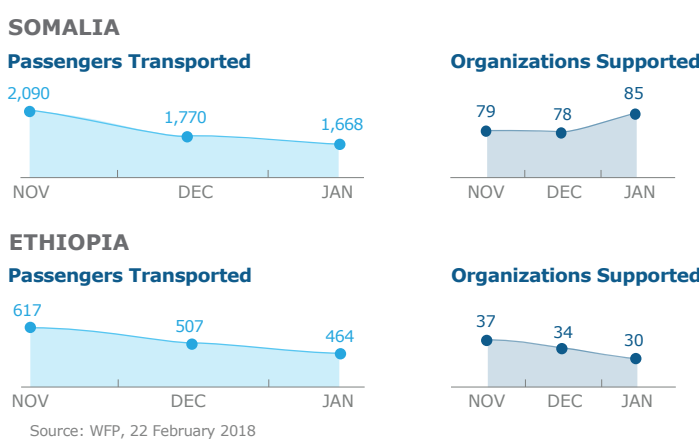
## FUNDING



## 2017/2018 HUMANITARIAN RESPONSE PLANS & CLUSTER REQUIREMENTS



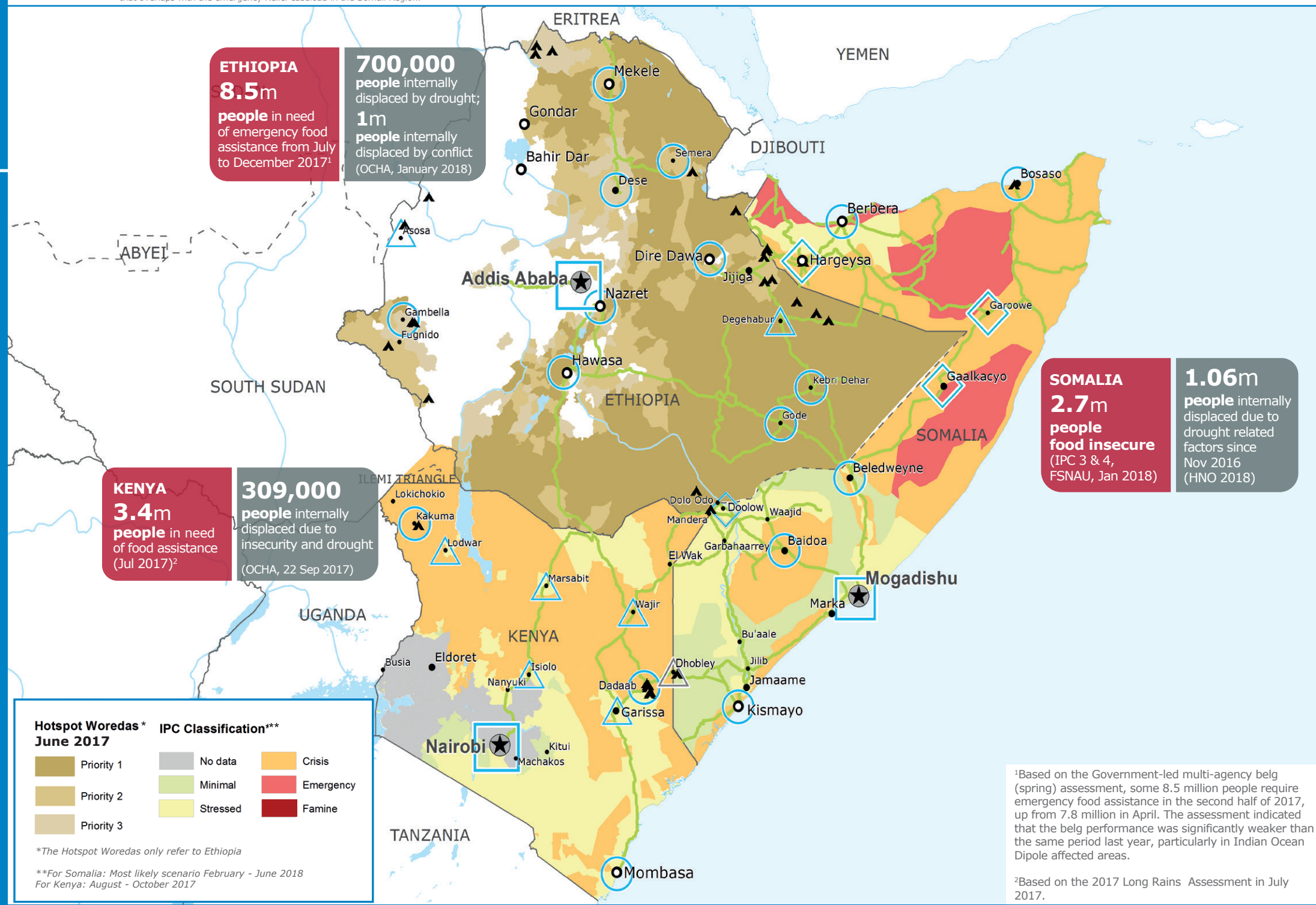
## UN Humanitarian Air Service (UNHAS)



## WFP LEVEL 2 EMERGENCY SINCE 06 FEBRUARY 2017

For more information, see the **SITUATION REPORT** and **COUNTRY BRIEF** [www.wfp.org](http://www.wfp.org)

Produced by the WFP **Operations Centre (OPSCEN)** jointly with Country Offices and Regional Bureau Nairobi



Sources: WFP, UNGIWG, GAUL, GLCSC, UNHCR  
 The designations employed and the presentation of material in the map(s) do not imply the expression of any opinion on the part of WFP concerning the legal or constitutional status of any country, territory, city or sea, or concerning the delimitation of its frontiers or boundaries. © World Food Programme 2018

This dashboard is based on best available information at the time of production. Future updates may vary as new information becomes available.

