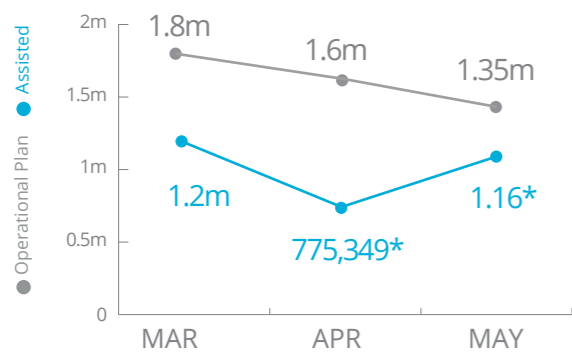


Democratic Republic of Congo

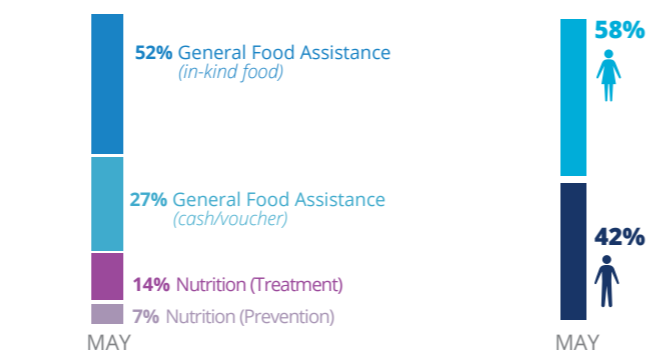
PEOPLE ASSISTED

DR Congo Interim Country Strategic Plan (ICSP)
(Activities in the six provinces covered by WFP L3 Emergency Response)



*Estimates

OPERATIONAL PROFILE



Percentages may include overlaps, i.e. beneficiaries that have been assisted through two or more activities/modalities.

FUNDING

DR Congo Interim Country Strategic Plan (ICSP)

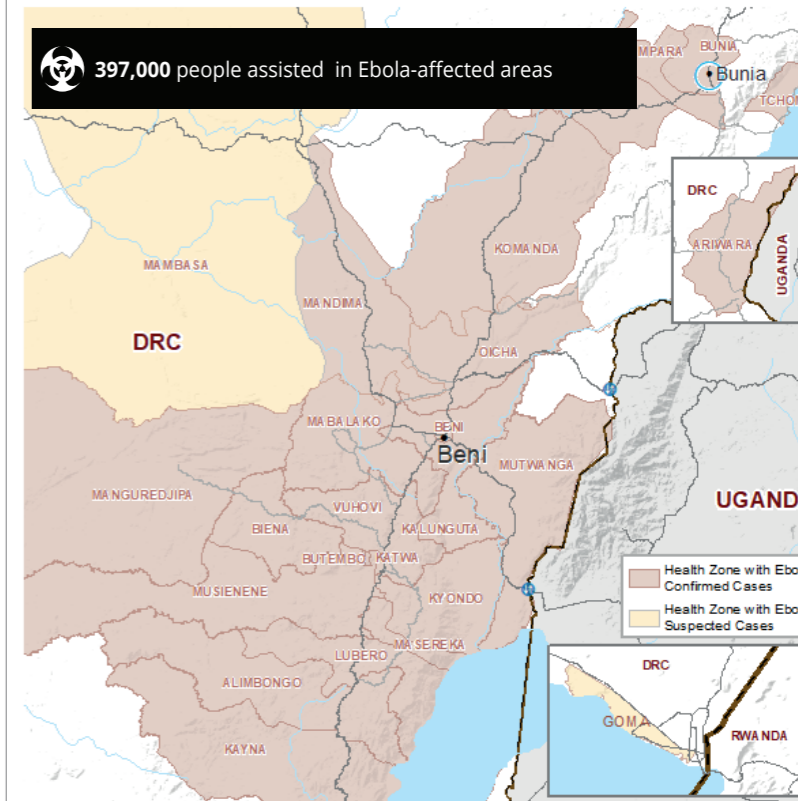
July - December 2019
Net funding requirement

US\$154.5m

2019 LEVEL 3 RESPONSE
REQUIREMENTS: US\$452.8m

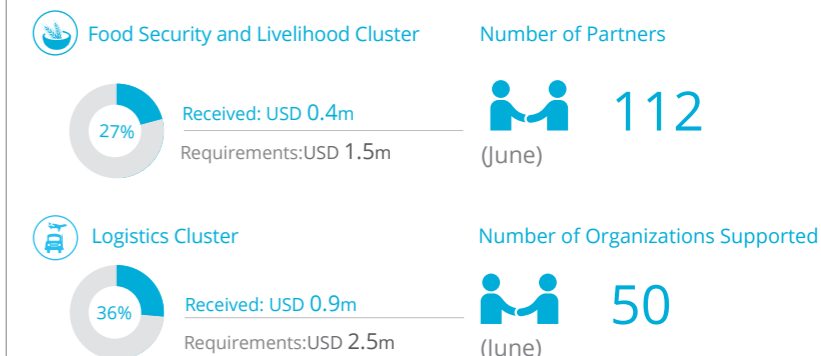
SOURCE: WFP, 21 JUNE 2019

EBOLA AFFECTED HEALTH ZONES

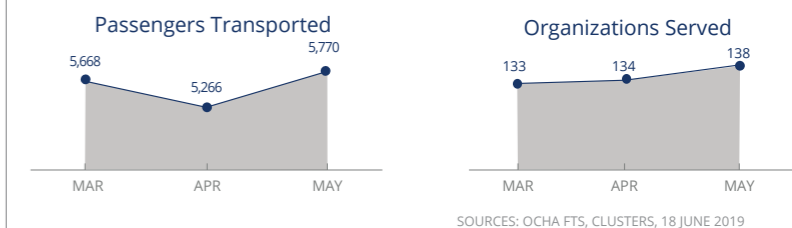


SOURCE: MOH, 29 JUNE 2019

WFP LED & SUPPORTED CLUSTERS



UN Humanitarian Air Service (UNHAS)



SOURCES: OCHA FTS, CLUSTERS, 18 JUNE 2019

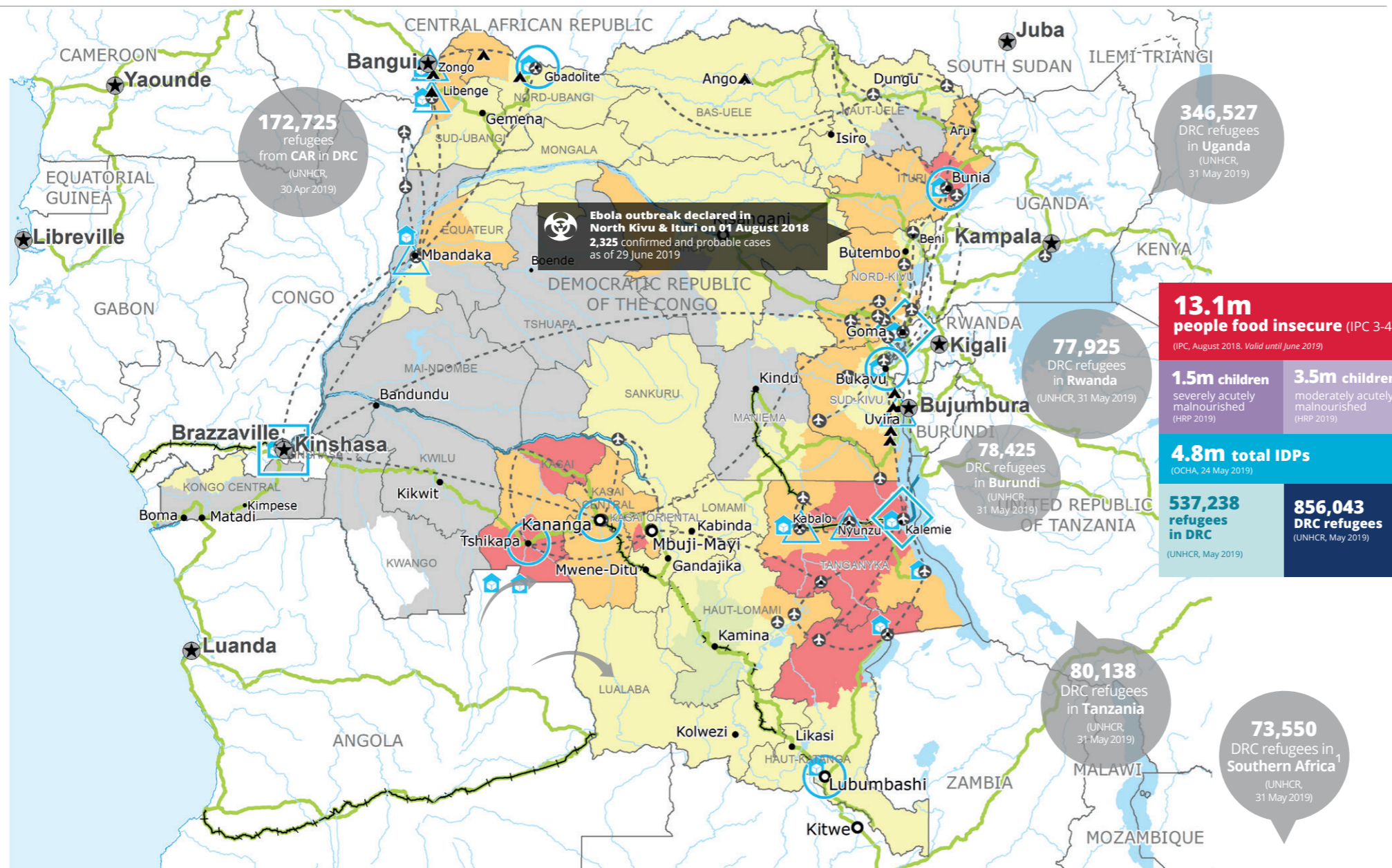
WFP LEVEL 3 EMERGENCY

SINCE 06 OCTOBER 2017 (LEVEL 2 EMERGENCY SINCE 12 DEC 2013)

For more information, see the SITUATION REPORT and COUNTRY BRIEF
www.wfp.org/countries/congo-democratic-republic

2A Interim Country Strategic Plan (2018-2020)

Produced by the WFP Operations Centre (OPSCEN) jointly with Country Office and Regional Bureau Johannesburg. This dashboard is based on best available information at the time of production. Future updates may vary as new information becomes available.



1 Namibia, Botswana, Lesotho, Malawi, Zimbabwe, Mozambique, Madagascar, RSA and the Kingdom of Eswatin (UNHCR, 31 Jan. 2019)

Sources: WFP, UNGIWG, GAUL, GLCSC, OCHA, UNHCR, IPC.

The designations employed and the presentation of material in the map(s) do not imply the expression of any opinion on the part of WFP concerning the legal or constitutional status of any country, territory, city or sea, or concerning the delimitation of its frontiers or boundaries. © World Food Programme 2019.

IPC Food Security Classification (August 2018)

