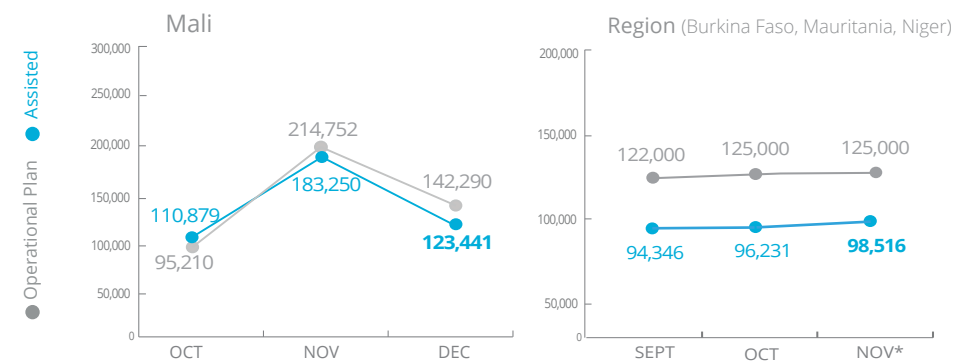


# Mali



## PEOPLE ASSISTED

Mali Transitional Interim Country Strategic Plan (T-ICSP)

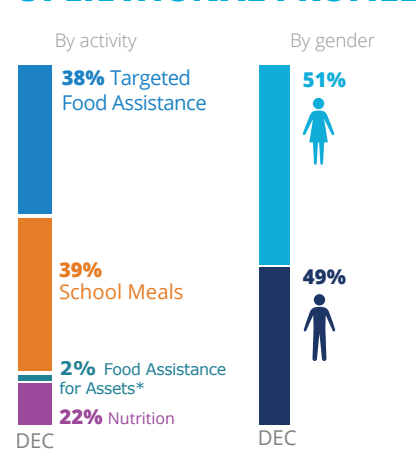


SOURCE: WFP, 30 JANUARY 2019

\* December figures are not yet available



## OPERATIONAL PROFILE



\* Low percentage as people who received cash were included in November numbers



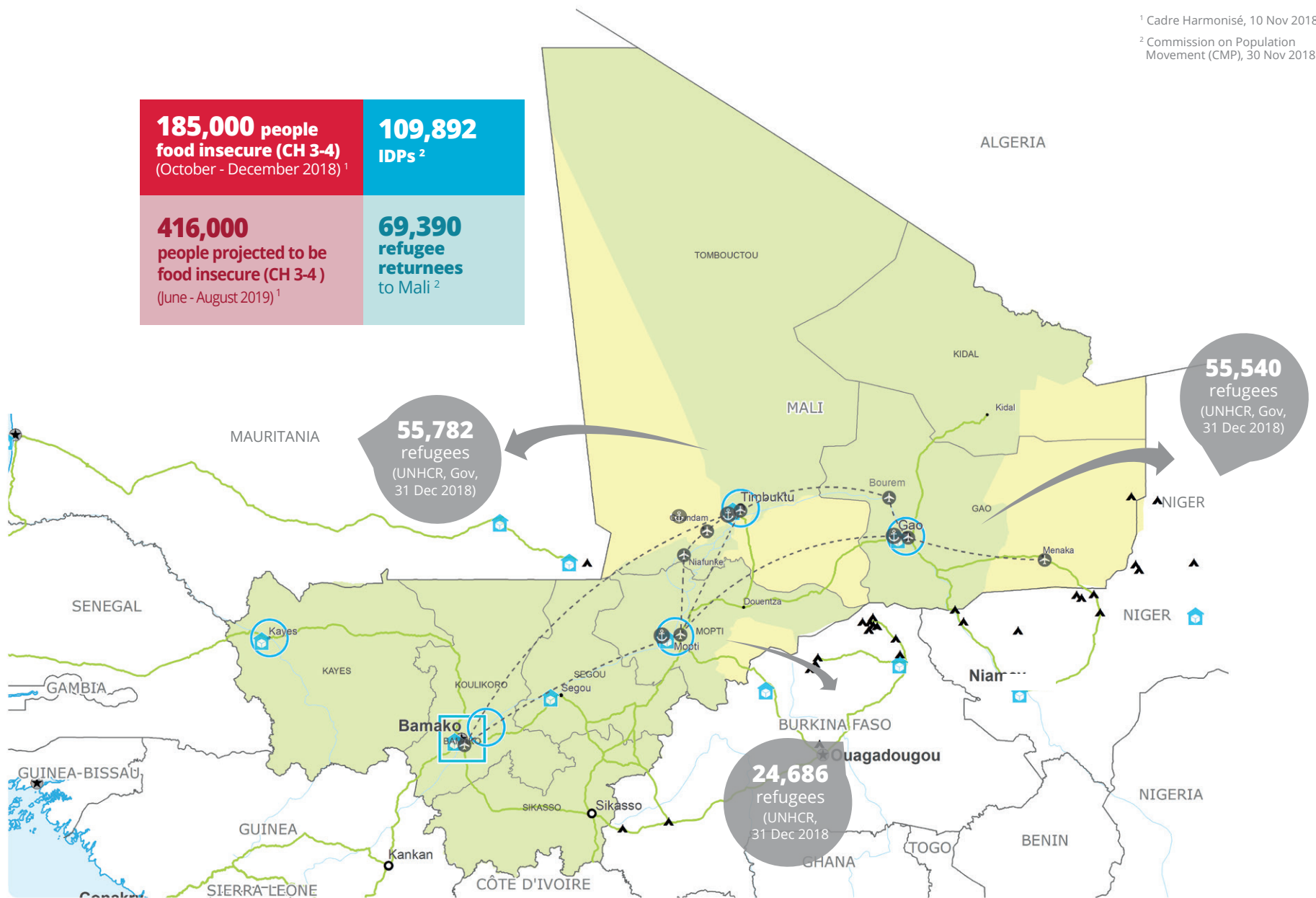
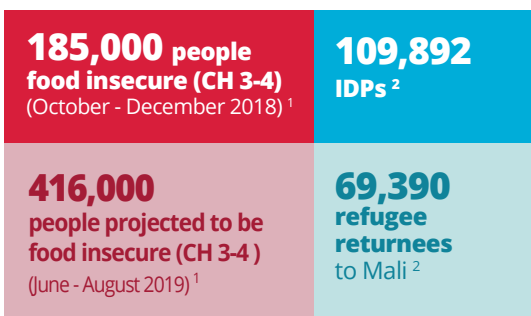
## FUNDING

Mali Transitional Interim Country Strategic Plan (T-ICSP)

February – July 2019

**US\$31.7m**  
Net funding requirement

SOURCE: WFP, 11 JANUARY 2019

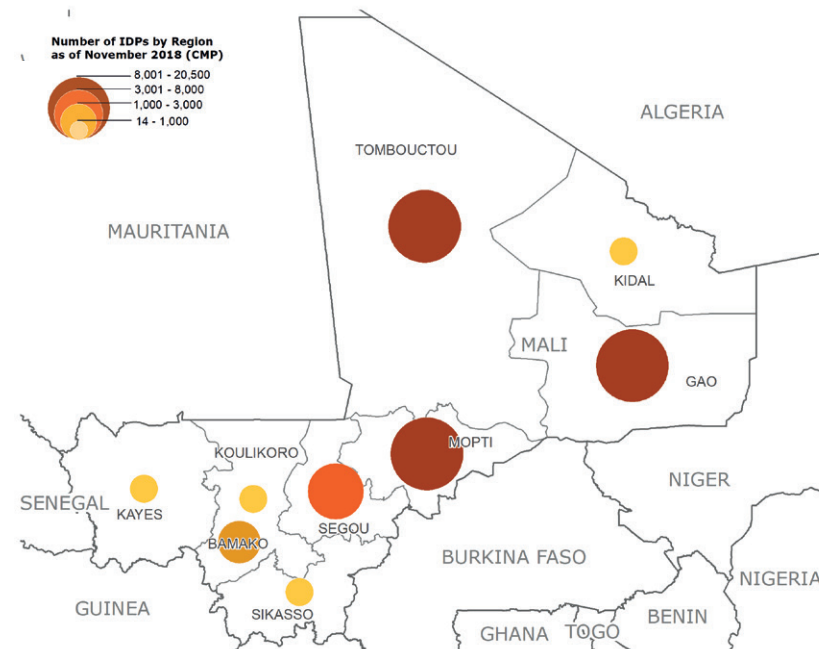


<sup>1</sup> Cadre Harmonisé, 10 Nov 2018

<sup>2</sup> Commission on Population Movement (CMP), 30 Nov 2018

## IDP CONCENTRATION

AS OF NOVEMBER 2018



**120,300 IDPs**

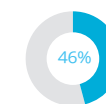
SOURCE: DIRECTION NATIONALE DU DÉVELOPPEMENT SOCIAL, OIM, DECEMBER 2018

## WFP LED & CO-LED CLUSTERS



Food Security and Livelihood Cluster

Number of Partners

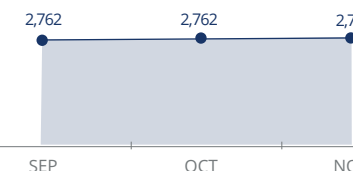


Received: US\$73.5m  
Requirements: US\$159.4m

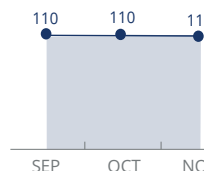
**46**  
(December)

## UN Humanitarian Air Service (UNHAS)

Passengers Transported



Organizations Served



Sources: OCHA FTS, 27 DECEMBER 2018; WFP, 27 DECEMBER 2018

## WFP LEVEL 2 EMERGENCY

SINCE 12 JANUARY 2012

For more information, see the SITUATION REPORT and COUNTRY BRIEF  
[www.wfp.org/countries/mali](http://www.wfp.org/countries/mali)

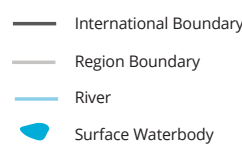
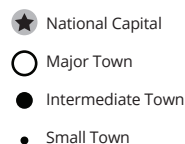
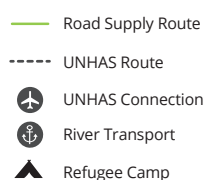
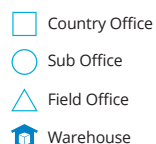
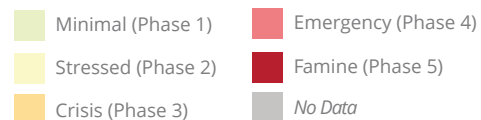


**Mali Transitional Interim Country Strategic Plan**  
<http://documents.wfp.org/stellent/groups/public/documents/ep/WFP284303.pdf>

Produced by the WFP Operations Centre (OPSCEN) jointly with Country Office and Regional Bureau Dakar.  
This dashboard is based on best available information at the time of production. Future updates may vary as new information becomes available.

### CH Food Security Classification

October - December 2018 Projection



Sources: WFP, UNGIWG, GAUL, GLSC, OCHA, UNHCR.

The designations employed and the presentation of material in the map(s) do not imply the expression of any opinion on the part of WFP concerning the legal or constitutional status of any country, territory, city or sea, or concerning the delimitation of its frontiers or boundaries.  
© World Food Programme 2019.