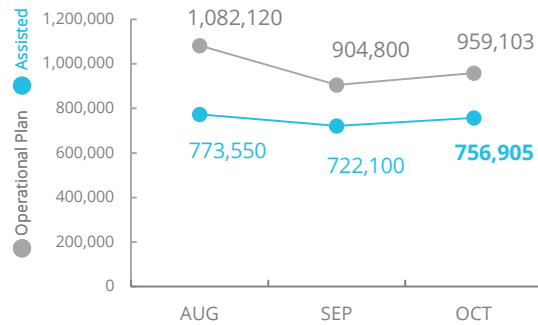


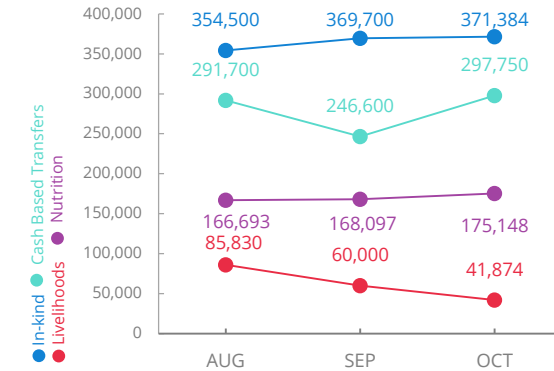
Nigeria

PEOPLE ASSISTED In Borno, Yobe and Adamawa States



SOURCE: WFP, 28 NOV 2019

OPERATIONAL PROFILE By Activity

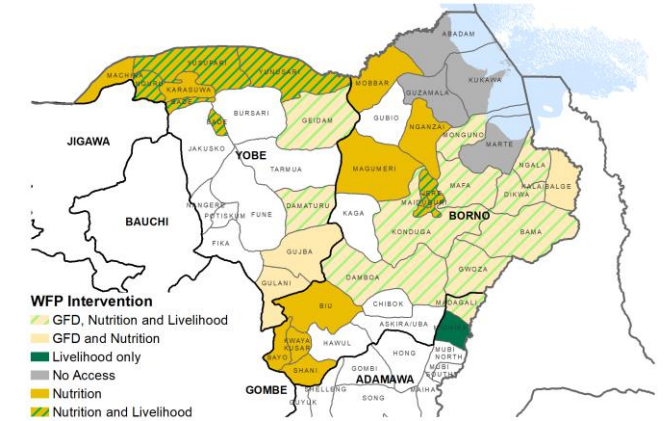


SOURCE: WFP, 22 NOV 2019

FUNDING Nigeria Country Strategic Plan (CSP)

December 2019 – May 2020
Net funding requirements
us\$96.0m

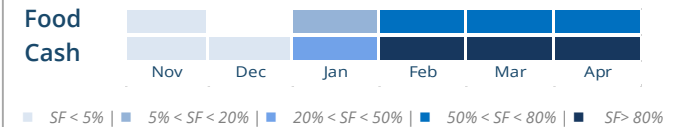
WFP OPERATIONAL PRESENCE IN BORNO, YOBE AND ADAMAWA STATES



AVERAGE MONTHLY FUNDING REQUIREMENTS

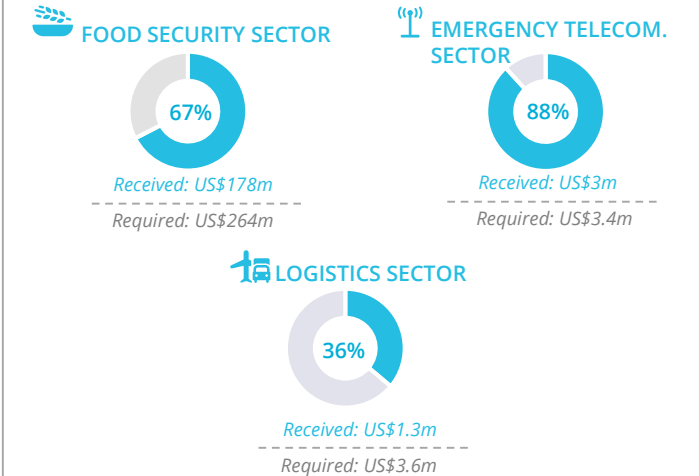
Food US\$ 10.3m Cash US\$ 10.6m

EXPECTED SHORTFALLS



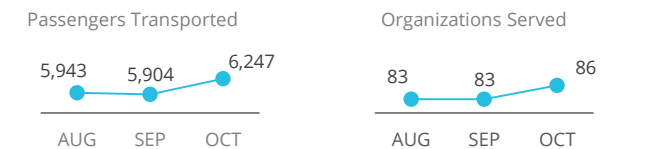
SOURCE: WFP, 28 OCT 2019

WFP-LED AND CO-LED SECTORS



SOURCE: WFP, 28 NOV 2019

UN HUMANITARIAN AIR SERVICES (UNHAS)



SOURCE: WFP, 28 NOV 2019

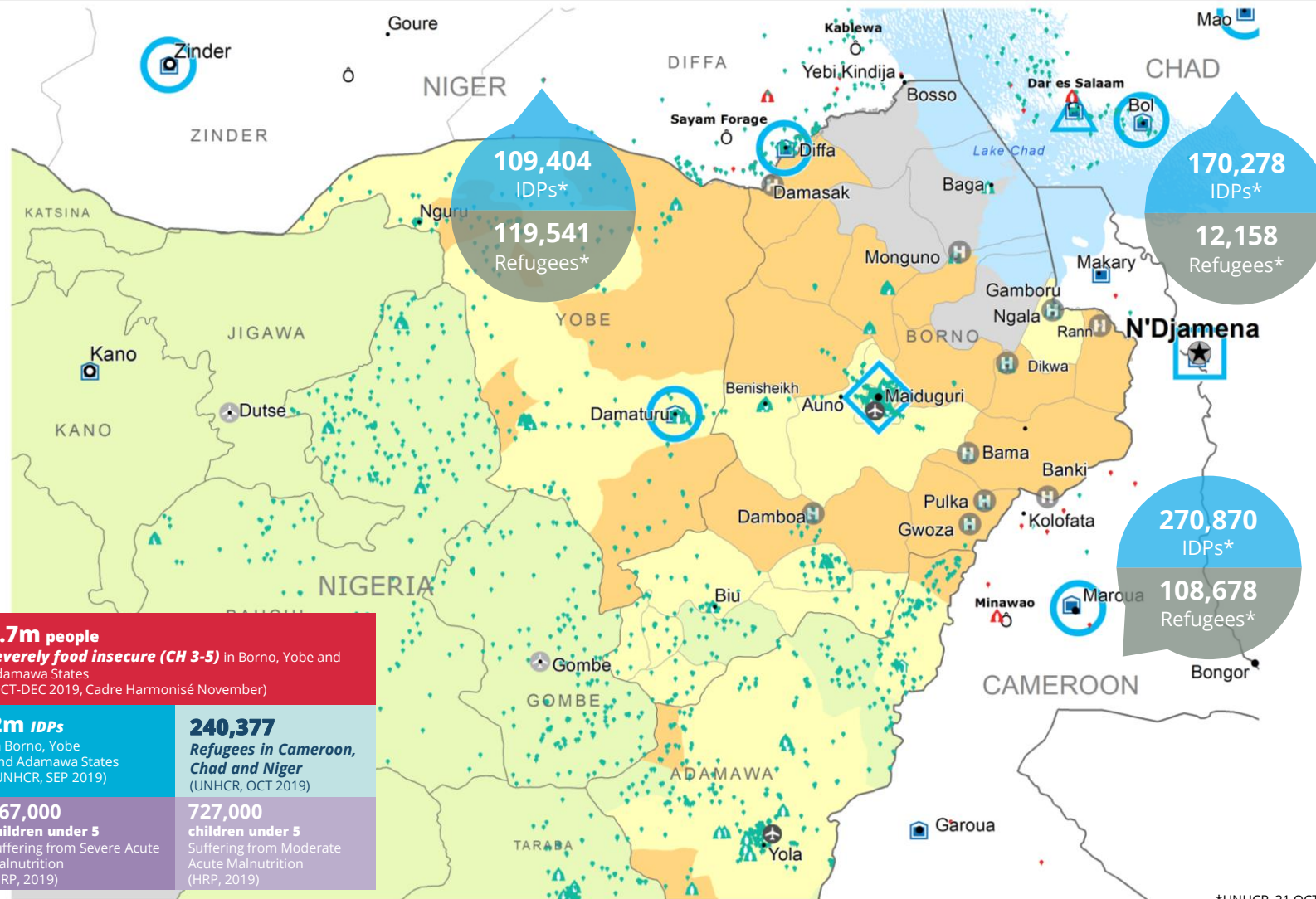
WFP LEVEL 3 EMERGENCY SINCE 11 AUGUST 2016



For more information, see the SITUATION REPORT and COUNTRY BRIEF
<https://www1.wfp.org/countries/nigeria>

Nigeria Country Strategic Plan
https://docs.wfp.org/api/documents/WFP-0000101930/download/?_ga=2.211211158.2010349590.1564781252-114077222.1558363545

Produced by the WFP Operations Centre (OPSCEN) jointly with Country Office and Regional Bureau Dakar. This dashboard is based on best available information at the time of production. Future updates may vary as new information becomes available.



*UNHCR, 31 OCT 2019

2.7m people severely food insecure (CH 3-5) in Borno, Yobe and Adamawa States (OCT-DEC 2019, Cadre Harmonisé November)

2m IDPs in Borno, Yobe and Adamawa States (UNHCR, SEP 2019)	240,377 Refugees in Cameroon, Chad and Niger (UNHCR, OCT 2019)
367,000 children under 5 Suffering from Severe Acute Malnutrition (HRP, 2019)	727,000 children under 5 Suffering from Moderate Acute Malnutrition (HRP, 2019)

- CH Food Security Classification**
October - December 2019
- No data
 - Crisis (Phase 3)
 - Minimal (Phase 1)
 - Emergency (Phase 4)
 - Stressed (Phase 2)
 - Famine (Phase 5)
- Operational Profile:**
- Country Office
 - Area Office
 - Sub Office
 - Field Office
 - Warehouse
 - UNHAS Connection
 - Ad-Hoc Fixed-Wing Destination
 - Ad-Hoc Rotary-Wing Destination
 - IDP Camp
 - IDP Center
 - IDP Location
 - Refugee Camp
 - Refugee Center
 - Refugee Location
 - National Capital
 - Major Town
 - Intermediate Town
 - Small town
 - International Boundary
 - Province boundary
 - River

Sources: WFP, UNGIWG, GAUL, GLCSC, OCHA, UNHCR.
The designations employed and the presentation of material in the map(s) do not imply the expression of any opinion on the part of WFP the delimitation of its frontiers or boundaries. © World Food Programme 2018.