



World Food Programme

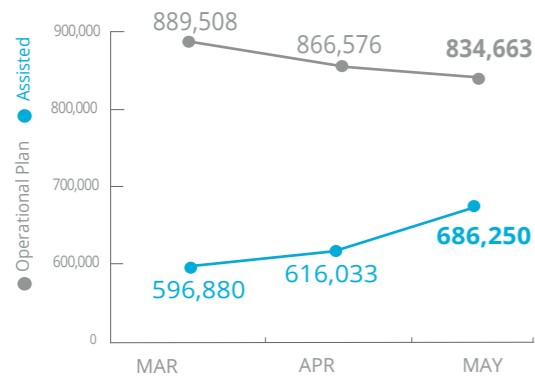
Emergency Dashboard | June 2019

SAVING LIVES
CHANGING LIVES

Nigeria

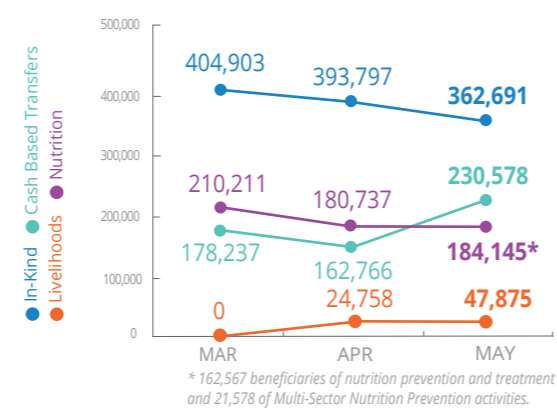
PEOPLE ASSISTED

Borno, Yobe and Adamawa States



OPERATIONAL PROFILE

by activity



FUNDING

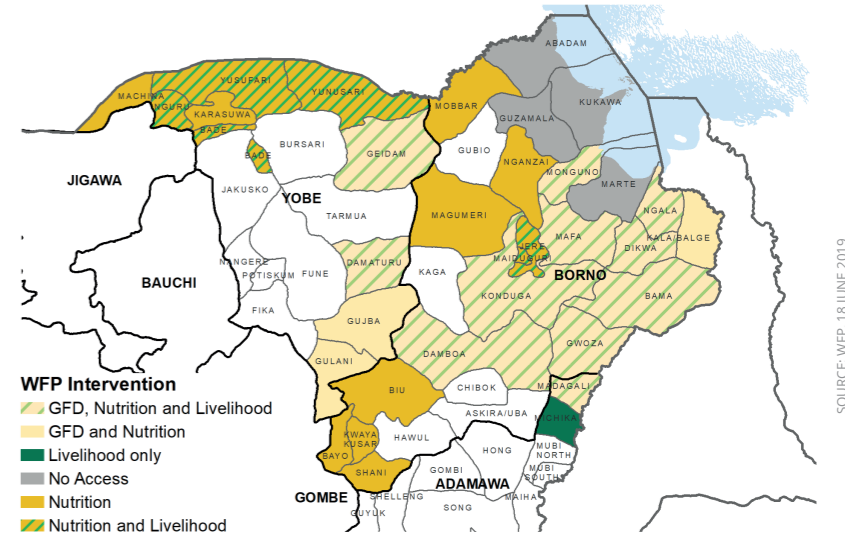
Nigeria Country Strategic Plan (CSP)

July - December 2019 Net funding requirement US\$ 89.1m

2019 LEVEL 3 RESPONSE
REQUIREMENTS: USD 242.7m

WFP OPERATIONAL PRESENCE

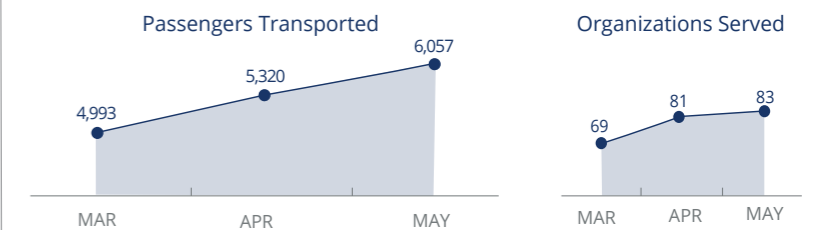
IN BORNO, YOBE AND ADAMAWA STATES



WFP-LED AND SUPPORTED SECTORS



UN Humanitarian Air Service (UNHAS)



SOURCES: OCHA FTS AND CLUSTERS, 19 JUNE 2019

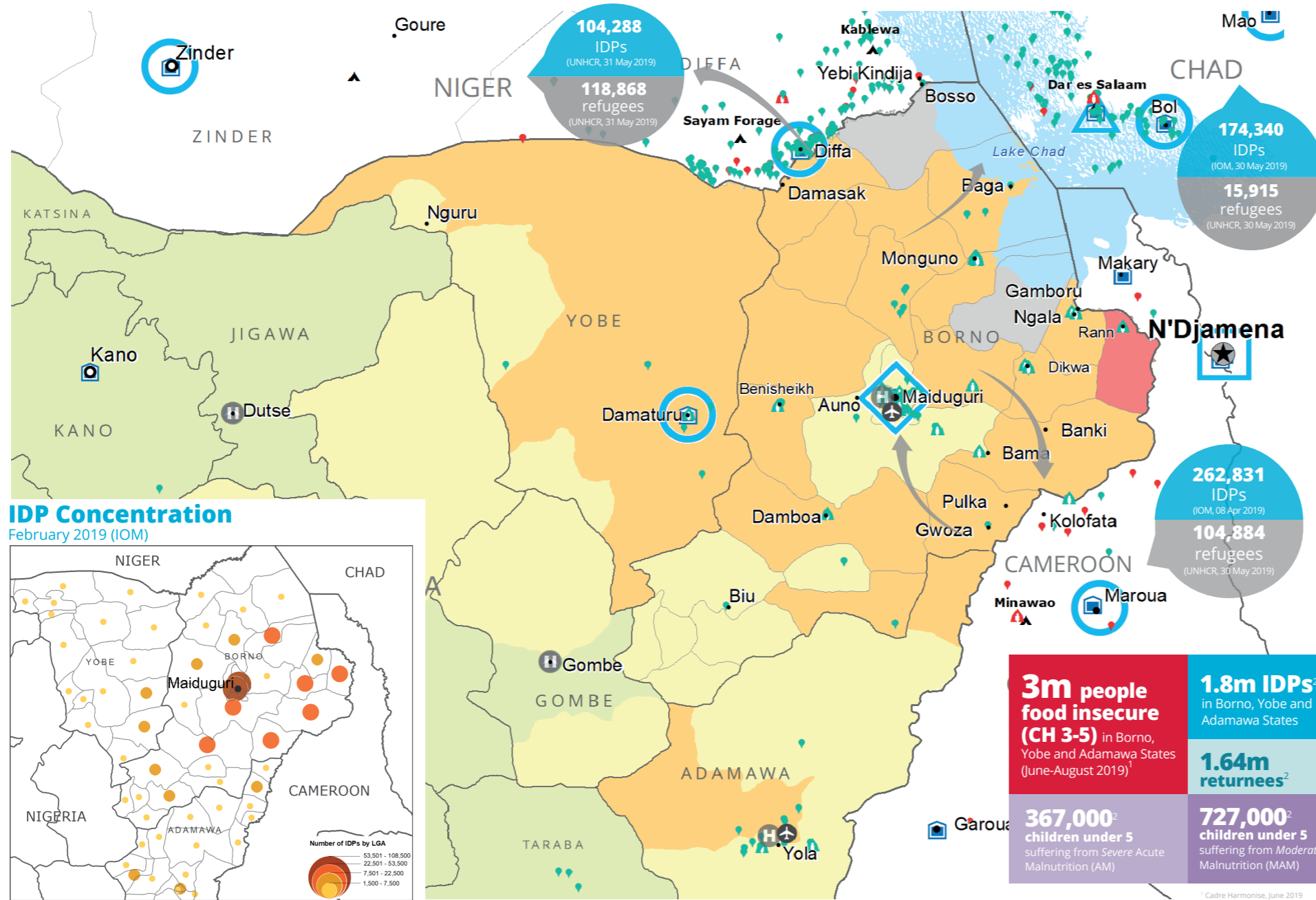
WFP LEVEL 3 EMERGENCY

SINCE 11 AUGUST 2016

For more information, see the SITUATION REPORT and COUNTRY BRIEF www.wfp.org/countries/nigeria

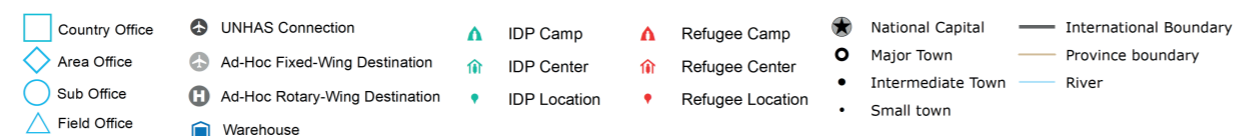
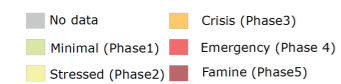
2A Country Strategic Plan
<http://documents.wfp.org/stellent/groups/public/documents/ep/WFP284303.pdf>

Produced by the WFP Operations Centre (OPSCEN) jointly with Country Office and Regional Bureau Dakar. This dashboard is based on best available information at the time of production. Future updates may vary as new information becomes available.



CH Food Security Classification

June - August 2019 Projection



Sources: WFP, UNGIWG, GAUL, GLCSC, OCHA, UNHCR. The designations employed and the presentation of material in the map(s) do not imply the expression of any opinion on the part of WFP concerning the legal or constitutional status of any country, territory, city or sea, or concerning the delimitation of its frontiers or boundaries. © World Food Programme 2018.